

Tourist Guide



SELSEY HOTEL



OLD MILL.



FISHERMEN'S BEACH.

Selsey



HIGH STREET



CHURCH & RECTORY



THE BUNGALOWS

2
0
1
8






viento
DELEVANTE

Italian style pizza with 12" rustic base

75 HIGH STREET SELSEY

01243 603 906

FOLLOW US ON FACEBOOK VIENTO DE LAVANTE

LOTS OF OFFERS ADDED DAILY

- | | |
|--|--------|
| 1 - Margherita V
Tomato sauce, mozzarella and basil. | £7.95 |
| 2 - Vegan Margherita VE
Tomato sauce, grand padano, zucchini and basil. | £8.95 |
| 3 - Quattro Formaggia V
Tomato sauce, mozzarella, gorgonzola, parmesan and ricotta. | £11.45 |
| 4 - Prosciutto Funghi
Mozzarella, chestnut mushroom, prosciutto and sun blushed tomatoes. | £10.95 |
| 5 - Delux
Tuna, mozzarella, rocket, black olives, red onion and sprinkled with lemon zest. | £11.95 |
| 6 - Con Carne
Tomato sauce, mozzarella, milano salami, chorizo, pancetta, roast beef and thyme | £12.45 |
| 7 - Diavola
Brava sauce, mozzarella, pepperoni, milano salami, chicken picante, turkish peppers and rosemary. | £12.95 |
| 8 - Veronese
Meatball sauce, chicken breast, pancetta and chestnut mushrooms. | £11.95 |
| 9 - Al Mediterranna V
Tomato sauce, feta cheese, black olives, red onion and baby spinach with chilli olive oil. | £11.95 |
| 10 - Suprem Pesche
Shrimps, king prawn, salmon, red peppers, mascaponi and gorgonzola. | £13.95 |
| 11 - De Levante Surf and Turf
Char-grilled steak, king prawns, gorgonzola and thyme. | £13.95 |
| 12 - Romana
Tomato sauce, mozzarella, anchovies, olives and capers. | £13.95 |
| 13 - Capriccissa V
Red pesto, tomato sauce, artichoke hearts, black olives, cappers, goats cheese and mushrooms. | £12.95 |
| 14 - Turkish Pizza
Steak mince beef, onion, tomato, parsley and a touch of garlic. | £7.95 |

Add extra toppings for £1.00 each

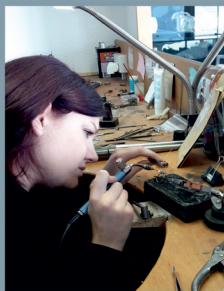
Any 2 Pizzas with 2 soft drinks £20.95 (Tuesday~Thursday only)

Any 2 pizzas with bottle of house wine £27.50 (Tuesday~Thursday) eat in only

Offers available 1st October to 15th June

10%Service charge will be added to the bill for parties of 10 or over but otherwise is optional
(offer prices subject to management discretion)





MSJ Jewellers

138 High Street, Selsey

Repair and design workshop
on the premises

Fast, friendly service on repairs,
watch batteries and straps.

Old gold purchased.

 [Facebook.com/MSJJewellery](https://www.facebook.com/MSJJewellery)
01243 696726



Selsey

Selsey is an ancient place with archaeological evidence showing that there has been continuous occupation since the Stone Age. There are also remnants of the Ice Age deposited here in the form of Glacial Erratics – large stones which have been transported by glaciers and which, therefore, are different from the local geology. Roman and Medieval artefacts have been uncovered over the years and fossils may still be found on the beach. Selsey was an important place for both the tribe of the Atrebates in the 2nd century and the Kingdom of the South Saxons in the 5th century, Selsey being the capital of the Kingdom.

The Venerable Bede records that St Wilfrid arrived in Selsey ca. 680, converted the South Saxons to Christianity (after rescuing them from drought and famine by, so the legend goes, teaching them to fish) and became the first Bishop of Selsey with a monastery and cathedral at Church Norton. This Bishopric continued unbroken until 1075 when the Diocese moved to Chichester.



E. Gardner photo given to Ruth by Tony Harris



St Wilfrid's Chapel is the original chancel of St Peter's Church, built at Church Norton in the late 12th century. Between 1864 and 1866 St Peter's was dismantled and re-erected closer to modern Selsey, the original stones re-used and the building enlarged to accommodate the new centre of population.



In 1824 the RNLi was formed and in 1861 the Selsey Lifeboat Station was established but saving lives at sea was already a long-standing tradition here, a silver medal being awarded to Lieut E B Westbrook RN in 1838.

Recently Selsey has taken delivery of a new lifeboat so the old jetty and lifeboat house were demolished and a new lifeboat house built.



Written 28 August 1934

Selsey



In 1908 the first moves were made to form a Fire Brigade in Selsey and our modern Brigade and its retained firemen still provide safety and security for Selsey residents.



Selsey became a WWII front-line position in 1944 and Mulberry Harbours were assembled here, ready for Operation Overlord. One still remains under water, east of Selsey Bill and, in recent years, has become an interesting site for divers.

Church Norton became, temporarily, RAF Selsey and its airstrip supported Fighter Squadrons and their Spitfires during the D-Day landings.



Selsey's unique atmosphere has attracted many celebrities.



Eric Coates (composer of 'By the Sleepy Lagoon' – the Desert Island Discs signature tune – the Lagoon being Pagham Harbour

R C Sherriff (author of the play 'Journey's End').

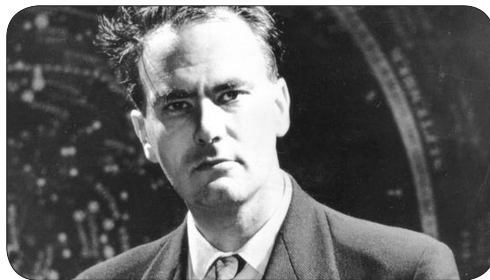
R C Sherriff (author of the play 'Journey's End'),





Bransby Williams
(actor, comedian and monologist)

Bransby Williams (actor, comedian and monologist) as well as the late, great Sir Patrick Moore astronomer, all lived here.



Sir Patrick Moore, astronomer.

Bombardier' Billy Wells (heavyweight boxer and 'gongman' for J Arthur Rank films) visited as did the Household Cavalry and their horses, using the (then) sandy beach to exercise men and beasts.



So what does Selsey offer today?

The High Street has a number of independent retailers including butchers, greengrocers and bakers, the latter allowing shoppers to boast about buying hot bread – a luxury which seems to be disappearing elsewhere – as well as supermarkets.

Cafés and restaurants provide sustenance and there are numerous societies and associations to support, educate and interest both residents and visitors.

Just one warning though.

Don't be surprised if complete strangers offer you a smile and a greeting – this is 'business as usual' for the friendly town of Selsey.





Pop into your local Selsey High Street Co-op for delicious midweek meals



High Street, Selsey, Chichester, PO20 0OG
7am-10pm Mon-Sat, 10am-4pm Sun

Serving suggestion. Products shown are stocked in participating stores and subject to availability. Varieties as stocked.



Holiday Story

NO PROBLEM AT ALL By Ann Brett

Planning a family holiday involves a lot of preparation, not the least of which is finding someone reliable to look after the family pets. So when friends of mine, Mark and Lisa, asked me if I would be prepared to house and pet-sit while they and their four children took a well earned break to Tenerife for two weeks, I was only too pleased to agree to it. After all, I'm an animal lover and what could be more simple than to live in a lovely big house and make sure the little darlings were fed and looked after. Granted, I hadn't actually seen any further than the kitchen, and knew they had two dogs and a cat, but they said they would leave detailed instructions for everything that needed doing.

Besides the two very large bulldogs, called Lottie and Camilla, and a feral cat, I discovered there was an African tortoise the size of a pouffe and two parrots. I had drawn the line at the ten foot python, which lived in a large vivarium in an outside building, but was assured that it was securely locked in, and fed before they went away. Fortunately, it wouldn't need to be fed again for another month. After being shown where everything was, and receiving a list of instructions the family had departed.

So on my first morning when I was woken at the first light of day by two screeching parrots, I did wonder if I had made the right decision.

The dogs showed their affection by wanting to get as close as possible and drooling all over me, covering my hair and clothes in slimy dribble. The feral cat was found as a kitten by one of the children and felt the need to live permanently upstairs. It had no proper name, so was called just 'Cat'. Before using the loo, I had to make sure I put the cat securely in a bedroom, otherwise it would look at me lovingly, and want to join me in various ablutions.

The tortoise lived in a nice warm pen in the large boiler house during the winter and roamed about the garden in the summer. Mark had penned off a large area of the lawn with heavy metal sheep pen sections. He said it would be easier to bring him in at night, as the garden was a good three acres, slanting downhill, so too heavy to carry him, especially coming uphill.

The parrots had an enormous cage each one at the far end of a large farmhouse kitchen. The African Grey was called George and the green one, Dora. Dora was quite friendly, but George hated me. His beady eyed look definitely said, 'I'm going to get you!'

There was building work going on next door, so every morning when the builders arrived, George and Dora would simultaneously wolf whistle very loudly. Fortunately the men were aware of the parrots and didn't think it was me. I lost count of the times I ran to answer the phone, only to realise it was George mimicking the ring tone. Each morning both parrots would screech and talk, 'Hello Dora, how are you today Do De Do! Do De Do! Ha Ha Ha!' interspersed with other parrot talk in a deep man's voice, 'George, George, hello George, all right mate?' This would be repeated over and over again for hours. A lesser woman would have flipped.

Every time I tried to take out George's water bowl to clean it, he would fly at the cage bars like a rottweiler and prevent me from removing the bowl. By chance I discovered that he had a passion for custard cream biscuits. I would offer him one on one side of the cage, so he would hop over and take the biscuit in a surprisingly gentle manner, then stand on one leg clutching the biscuit with his other claw. He ate the biscuit, with eyes half closed, in a state of bliss, while I whipped around the other side to deal with the water bowl. So George and I were friends – well, only while he ate his custard cream and then it all went back to normal.





Whilst this was going on, Dora's eyes were fixed on me. She wanted a custard cream as well. I soon realised this was a good way to keep them quiet, and so I bought in a good supply of biscuits.

I'd been instructed to put the dogs outside in the garden for about fifteen minutes before going to bed so they could do their business. Then they would settle down for the night. I found that to put Camilla's bed in the large travelling cage was the best option, where she could then be shut in. Otherwise she would wander about the house, chase the cat, and then try to get into bed with me, whilst licking me to death.

Lottie was old and happy to sleep in her bed. She was a very large dog with the ugliest face ever, sagging red eyes and her tongue permanently poking out of her mouth. But, apart from that she was appealing.

The first night I opened the door and stood pointing and shouting 'Camilla, Lottie OUT! Now!' Camilla slowly obeyed and went out into the dark night, but Lottie refused to leave her bed. In fact she didn't even open her eyes, but lay in her basket with her back to me. I poked her, called her name, slapped my legs to entice her, but to no avail – Lottie was not going to move. So I dragged her bed to the threshold of the open door and tipped it up on end. Lottie clung on like a limpet, with her claws hooked over the edge of the back of her bed. She was not going anywhere. Eventually, I gave in, and with Lottie and her bed back in place, I locked up and went to bed.

At 3 a.m. something awoke me and I was aware of a horrible smell. This wasn't unusual as the dogs passed wind all day long. I went downstairs to find an enormous pile of poo in the middle of the kitchen floor. Lottie was lying in her bed, eyes shut tight as if to say 'It wasn't me.' Luckily the floor was tiled, and so in the middle of the night I was mopping the floor with bucket and bleach.

The following night I cracked it. Food was the answer. Open the door, rattle the biscuit tin, dogs came running, throw a handful of biscuits out and slam the door behind them. Job done.

The following day, I took some broccoli outside for the tortoise, and to my horror found that he had disappeared. I panicked in case he had been stolen, before noticing a gap in the fencing. He had managed to lift one of the fence panels away from its interlocking connections, escaping into the three acres of garden. I eventually found him at the bottom of the sloping garden under some foliage in a ditch. It was one thing picking up this huge African tortoise, but getting him out of the ditch and up the steep slope back into his pen nearly killed me. The pen secured I revived myself with a well-earned cup of tea.

During the two weeks, I had tried to teach Dora and George some different words, but they just sat silently staring at me, refusing to utter a word.

The two weeks finally, and thankfully, came to an end, and I was ready to come home. I hadn't imagined it would be so tiring looking after the motley lot. The family returned all smiles and sun-tanned after their holiday. Lisa asked me if everything had been OK. 'Oh yes!' said I, 'No problem at all,' as I walked to the door to leave. At that moment George bellowed loudly in a voice remarkably like mine, 'LOTTIE! OUT! NOW!'

THE END



Spacious family-run B&B, 10 en-suite rooms overlooking beautiful private gardens. Home cooked breakfast, ample private parking, free Wifi. Licensed for private functions up to 30 people.

Bespoke Travel Agent and Cruise Specialist.

Contact Claire or Paul to discuss your individual requirements.

01243 606899

www.thecoastyard.co.uk

hello@thecoastyard.co.uk

St Andrews Lodge, Chichester Rd, Selsey, PO20 0LX



Selsey

Enjoy ART with Arts Dream



Selsey!

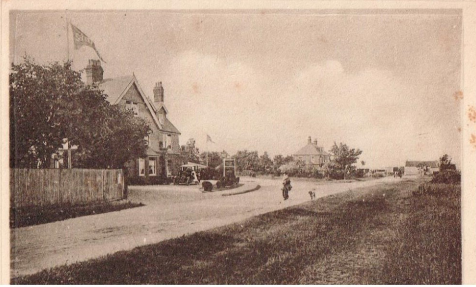
You will find a friendly welcome at our painting group meetings held in St Wilfrid's Church Hall

- Seal Island Artists – Tuesday mornings
- Drawing & Painting for Pleasure – Thursday evenings
- Beginners & Returners – 2nd & 4th Tuesday afternoons
- Regular workshops in different media under the guidance of professional artists Zakura Hill, Marcus Finch, Ann Chadwick, Alan Kirk and Anita Beckwith

Arts Dream's Summer Exhibition of Arts & Crafts with selsey camera club In Selsey Town Hall 23rd to 27th August

full details of all events and workshops can be found on www.artsdream2013selsey.weebly.com And on Facebook page Arts Dream Selsey

For further information about each of the above please contact either Angela Benwell 01243 603332 – dwbenwell@gmail.com or Jan Bush 01243 607821 – janpbush@btinternet.com



Selsey Year

April

Saturday 7th April 10am to 3pm Little Spain Bowling Club Open House

Saturday 14th April Crablands Bowls and Tennis Club New Members Day

Sunday 22nd April 10am St. Georges Day Service St. Peter's Church

May

Saturday 5th May St Wilfrid's Moonlight Walk

Sunday 6th May Annual Lifeboat sponsored walk 10kn/8miles. Start and finish at the new Lifeboat house

Monday 7th May 7.30 to 1pm Carers' Car Boot The Recreation Ground, School Lane

Saturday 12th May 7pm- Race Night with Fish and Chip Supper St. Peter's Church Hall tickets £10 01243 602623

Sunday 13th May 12.30pm for 1pm Start The Patrick Moore Cup and family day out at Selsey Cricket Club

Thursday 24th May to Tuesday 29th May Touching Tomorrow and Beata Beatrix Two plays by Gillian Plowman in The Pavillion Selsey

Saturday 26th May 10am to 12pm Plants and Preserves Sale at St Wilfrid's Church

Saturday 26th to Sunday 27th May Selsey Stock Music Festival

Monday 27th May Festival of Flowers Chichester Cathedral with St. Peter's Church

Monday 28th May 7.30 to 1pm Carers' Car Boot The Recreation Ground, School Lane

June

Sunday 3rd June Walk for St Wilfrid's 10am start from Whiteways Lodge Car Park

Saturday 9th June 10am to 3pm Clay Pigeon Shoot For St Wilfrid's Hospice.

Sunday 24th June 7.30 to 1pm Carers' Car Boot The Recreation Ground, School Lane

July

Friday 20th July 7.30 Selsey Community Choir summer Concert

Friday 20th July 7.30pm to 10.30pm Bar Dance at The Apuldram Centre Chichester

Saturday 21st July St Wilfrid's Spinnaker Tower Absail

Saturday 28th July 10am to 1pm St Wilfrid's Church Summer Fair, Church Road

Sunday 29th to Sunday 5th August Lifeboat Week (More details in Selsey Life and the Lifeboat programme.)

Sunday 29th July 7.30 to 1pm Carers' Car Boot The Recreation Ground, School Lane



Local Shopping

HILLFIELD GARAGE SELSEY LTD

MOT Testing Station

Servicing & Repairs to all makes of
Cars & Light Commercial Vehicles
Welding • Breakdown Service

Selsey 607855
96 HIGH STREET, SELSEY
PO20 0QG

www.hillfieldgarage.com

Director: IAN MOREY M.I.M.I



Rudwicks Hardware

88 High Street, Selsey
602160

Paint . Locks
Key Cutting Service from £3
Cook Ware . Homeware
Gardening Supplies
Weed Killers
Foods etc Decorating supplies
Electrical accessories
Hardware and Ironmongery
and much much more

SWEETS & TREATS

131 HIGH STREET SELSEY

Tradition Sweets



Fudge
Chocolate
Toffee
Sugar Free
Sweets



Tea &
Coffee
Cakes
Ice Cream
Scones



Village Flowers

129 High Street

01243 602863

We have added Qualatex Boutique Helium
Balloons to our range of
balloons and gifts.

Pop in the shop or call 602863

You'll find a warm welcome for you and your pet at

The Pet Pantry



COME IN AND ASK
US ABOUT OUR
SPECIAL OFFERS

Wide range of pet supplies:
foods, toys, accessories, beds,
leads, collars & treats

179 High Street, Selsey

01243 607071

email: toni@thepetpantry.co.uk

www.thepetpantry.co.uk

FREE LOCAL DELIVERY SERVICE

Everything from the pet store
delivered to your door



Selsey Year

August

Thursday 9th August Gainsborough Singers Summer Concert. Selsey Town Hall 2pm to 4pm
£3 Tickets on the door

Saturday 11th August 7pm Selsey Centre - Cliff Richard Tribute Concert - Tickets £10

Sunday 12th August Cat and Rabbit Summer Fayre 11am-4pm at Holborow Lodge, Chalder Lane, Siddlesham. West Sussex PO20 7RJ Entry £1 Or cat/rabbit food

Sunday 12th August Beer and Rounders Family Day at Selsey Cricket Club.
Grounds open from 10.30am Match starts at 11am.

Monday 13th August to Tuesday 28th August Burnett Funfair on Cricket Club Green
Behind the Co Op

Thursday 16th to 18th August The End of the Pier Show. Selsey Town Hall. Daily at 7.30pm
with a 2.30pm matinee on Saturday

Thursday 16th August U 3 A Selsey Cheese and Wine Evening 6.30pm for 7pm at
The Selsey Centre

Thursday 23rd August to Sunday 27th August Arts Dream Summer exhibition

Sunday 26th August Carnival 12 pm to 5pm Procession at 5pm and evening fireworks
display.

Monday 27th August Giant car boot sale on the Cricket club green behind Co Op

September

Saturday 8th September Leap for Love St Wilfrid's Sky
Dive

Saturday 22nd September 10am-12noon Book Sale
in St Peters Church Hall with breakfast refreshments

October

Saturday 13th October Selsey Firworks Gates open at
5.30pm, bonfire around 8.30pm/8.45pm, fireworks around
9.15pm/9.30pm



November

Sunday 4th November Cat and Rabbit Christmas Fayre 11am-3pm at Holborow Lodge,
Chalder Lane, Siddlesham, West Sussex PO20 7RJ Entry £1 Or cat/rabbit food

Sunday 11th November 10am Service of Remembrance to commemorate the centenary of
the end of the First World War - a full day of events - starting at 6am with a lone piper at the
War Memorial to mark the start of the last battle and ending at 7pm with the
lighting of a beacon and full peal of bells to commemorate when the guns fell silent.

Saturday 17th November U 3 A Christmas Market, Selsey Town Hall 10am to 12.30
Admission Free

Saturday 24th November 11am-2pm Christmas Fair St Peters Church Hall

December

Saturday 1st December 11am to 2pm Apuldram Christmas fair, Chichester

Sunday 9th December 4pm Annual Service of Christingle at St Peters Church

Saturday 15th December Chichester Voices Choir Concert

Sunday 16th December 4pm Annual St Peters Church Service of Carols Round the
Christmas Tree followed by refreshments

MORE DETAILS OF EACH EVENT WILL BE IN THE SELSEY LIFE MAGAZINE



Selsey Methodist Church

welcomes you to Selsey

Our church is located opposite Selsey Town Council offices in the High Street & is adjacent to Medmerry School.



We have 2 halls available for hire, and offer a friendly, welcoming, traditional Church for Sunday

Services. Our Minister, the Revd. Bruce Allinson lives in the village with his family, and is available for Weddings, Christenings and Funerals. He is often out-and-about in the village. Come and share our Easter, Harvest & Christmas Services if you wish.....

everyone always welcome. Being a real part of the busy Selsey community, we are pleased to share the premises with a variety of Selsey groups and organisations:- Selsey Brownie pack meets on a Monday evening as does Selsey Amateur Choral & Operatic Society (SACOS). Selsey Community Choir sings on Wednesday evenings. Two different

U3A groups meet on Tuesdays and Thursdays. The Crafty Natter group meets twice a month on Wednesday afternoons. Each Tuesday morning a Card Craft Group meets. Once a month Sew Together meets on a Wednesday. A coffee morning, is held every Thursday morning from 10am for everyone, with SACOS gathering for rehearsals for a second time in the evening. Selsey Arts Dream uses our premises throughout the year. The Alzheimers & Dementia Support group meets monthly on a Wednesday. Friday afternoons host a weekly Foodbank session with Table Top and Charity Sales being held regularly on Saturday mornings. Children's parties use our large hall too, as does a monthly Tea Dance group on a Thursday afternoon.

We organise Quiz & Meal evenings, hold Spring and Christmas Fayres.....community fun events for church funds. We have a web site www.selseymethodistchurch.org.uk for your perusal. Please pop-in and visit us some time. If we can help you please contact us - 01243 601032.



Churches



St Peters Church

Sunday 22nd April 10am

St. George's Day Service

Saturday 12th May Race Night with

Fish/Chip Supper - Church Hall

Tickets £10 01243 602623

Monday 27th May Festival of Flowers

Chichester Cathedral with St. Peter's

Sunday 8th July 10am Service for Sea

Sunday with refreshments from the RNA

12 noon

Sunday 29th July Lunch in Church Hall

followed by concert in Church by the

Chichester Voices

Saturday 11th August 7pm Selsey Centre -

Cliff Richard Tribute Concert - Tickets £10

Monday 13th/Thursday 16th August

Annual visit to The Shrine of Our Lady of

Walsingham

Thursday 6th/13th September

Visit to Dover Castle

Saturday 22nd September 10am-12noon

Book Sale in the Church Hall with breakfast refreshments

Sunday 11th November 10am Service of

Remembrance to commemorate the 100

years First World War full day of events -

starting at 6am with a lone piper at the War

Memorial to mark the start of the last battle

and ending at 7pm with the lighting of a

beacon and full peel of bells to

commemorate when the guns fell silent.

Saturday 24th November 11am-2pm

Christmas Fair Church Hall

Sunday 9th December 4pm Annual

Service of Christingle

Sunday 15th December 4pm

Annual Service of Carols Round the

Christmas Tree

followed by refreshments



East Beach Evangelical Church

Welcome to Selsey and we hope you enjoy your stay as much as we love our Town!

*You are assured of a warm welcome at **East Beach Church** if you would like to join us on a Sunday. We are an independent Bible-believing community-focussed church and have a regular **Sunday morning worship service** at 10am.*

*Our monthly **Family Service** is on the first Sunday at 10am.*

***Songs of Praise** is at 5pm also on the first Sundays of April, June, September & November
Please do visit us during your stay.
Have a lovely holiday!*

For information on our regular weekly activities

www.ebecselsey.org.uk or call **01243 607741**

Marisfield Place (opposite East Beach shops) PO20 0PD

ST. WILFRID'S CHURCH, CHURCH ROAD,
SELSEY



SATURDAY 26 MAY 10 A.M. – 12 NOON
PLANTS AND PRESERVES SALE

Get your garden ready for summer with a display from our colourful collection of bedding and other plants and stock up on jams and chutneys from St. Wilfrid's Kitchen.

ST. WILFRID'S CHURCH, CHURCH ROAD,
SELSEY

SATURDAY 28 JULY 10 A.M. – 1 P.M.
SUMMER FAIR

Cakes, books, bottle stall, chocolate tombola, gifts, good as new and plenty more at our Summer Fair.



Selsey Cancer Relief 2018. Jumble Sale Methodist Hall Selsey



Saturday 07/04/2018
Saturday 05/05/2018
Saturday 02/06/2018
Saturday 04/08/2018
Saturday 01/09/2018
Saturday 06/10/2018
Saturday 03/11/2018
Saturday 01/12/2018

There is ample parking behind the fire station.

**SELSEY TYRE
&
BATTERY
CENTRE**
96 HIGH STREET
SELSEY
PO20 0QG
**01243
607552**



TYRES
BATTERIES
**COMPUTERISED
WHEEL
BALANCING**
**PUNCTURE
REPAIRS**

Job Opportunities
Call 07989 534 852

★ roller coaster ★

free
entry
& parking

★ the sizzler ★



★ the waltzer ★

west sands

funfair

fun for all the family

 Find us on
Facebook

unlimited rides
only £10
from 12pm-5pm

all rides and activities included

Job Opportunities
Call 07989 534 852



WE'RE
NEAR THE
WINDMILL

SALTINGS DINER

EAT IN OR TAKEAWAY

2 MEALS
FOR £10

FULL ENGLISH
BREAKFAST

ONLY
£4



HOT FRESH
DONUTS



1/4LB CHEESE
BURGER & CHIPS

ONLY
£4



PLUS HOT DOGS, ICE CREAMS
AND LOT, LOTS, MORE!

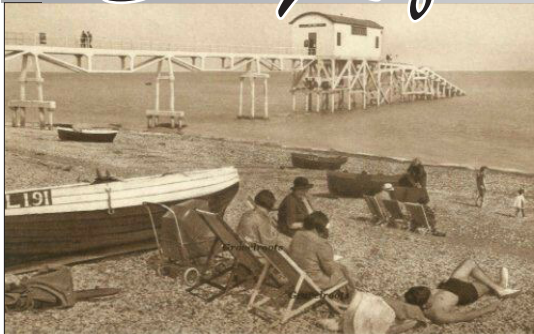
OPEN ALL DAY
9AM TILL LATE

ALL ENQUIRIES: 07989 534852

Find us on
Facebook

WEST SANDS FUN FAIR AND SALTINGS DINER, WEST SANDS HOLIDAY PARK, MILL LANE, SELSEY, WEST SUSSEX PO20 9BH

Selsey Lifeboat



In 1958 the RNLI decided to build a new boathouse and slip way at a cost of over £75,000. The 110 metre gangway was built using steel and timber decking and the boathouse was reinforced concrete with a steel slipway on concrete piles. The boathouse became operational in April 1960 and was officially opened by the Duke of Richmond and Gordon in July that year. During the 57 years three different classes of lifeboats have operated from

the boathouse, RNLB Canadian Pacific 46ft Watson class 1938-1969, RNLB Charles Henry 48ft 6in Oakley class 1969-1983, RNLB City of London 47ft Tyne class 1983-2006, RNLB Voluntary Worker 47ft Tyne class 2006-2017. During that time several other lifeboats have launched from the station whilst on relief duties. Since 1960 Selsey lifeboats have launched from the current boathouse 972 times and assisted in excess of 850 people.

Sometimes in recent years the launch has been delayed by divers exploring the sea life underneath the boathouse. On the 26th August 2013 an unexploded 500lb bomb was discovered 100 metres from the boathouse and the lifeboat was launched as a precaution while the bomb was dealt with by the Royal



Navy explosive ordnance disposal team.

There have been several film and TV crews over the years filming adverts such as Timex watches in the 60's, Fisherman's Friends and Lacoste clothes in the 80's and 90's, Shirley Bassey launched on the Charles Henry while singing for her Saturday night show in 1976. Rory McGrath filmed for the Discovery channel and Guy Ritchie filmed the splash as the Tyne launched to be used in the Sherlock Holmes film in 2008. The Birdman rally started at Selsey launching from the lifeboat gangway in the early 70's before moving to Bognor.

The current boathouse has been replaced by a new building which will house both the inshore lifeboat and the new Shannon class lifeboat which has been allocated to Selsey to replace the Tyne class. The Shannon class is designed to be launched from the beach by a state of the art launch and recovery rig. Both the Shannon lifeboat and launching rig are due to arrive at station later this year so after Voluntary Worker launches on the 1st April it will be moored off Selsey and still be the operational lifeboat until such time as the Shannon becomes the station lifeboat.





Selsey Lifeboat

RNLI Selsey Lifeboat Station



The decision in early 2012 by the Operations Committee of the RNLI to place a new Shannon Class All Weather Lifeboat at Selsey secures the future of an RNLI Lifeboat Station at Selsey for the next fifty years.

This heralds the biggest change in lifeboating, as we have known it, since Selsey Lifeboat Station was established 153 years ago in 1861.

The Shannon Class was designed entirely in house by RNLI naval architects and harnesses cutting edge technology to ensure the new lifeboat class meets the requirements of a 21st century rescue service.

For almost 50 years all all weather lifeboat classes have been named after rivers and this is no exception. It is the first time an Irish river name has been used and this reflects the RNLI coverage of the entire coast of the UK and Ireland.

The introduction of the Shannon into the RNLI's fleet will be the final step in enabling the RNLI to fulfil it's commitment that all operational all weather lifeboats will have a top speed of 25 knots. At around 30% faster than our oldTyne Class the Shannon will enable our volunteer crew to provide assistance to casualties much faster.



The Shannon Class will be the first all-weather lifeboat to be powered by twin water jets, making it more manoeuvrable and safer to operate in shallow waters – particularly relevant to the waters around Selsey - while reducing the risk of damage during launch and recovery.

The Shannon is 13 metres long, about the same as the old Tyne Class, with a range of one hundred

nautical miles or ten hours duration. She is inherently self righting in the unlikely event of a capsizing returning to an upright position, like all RNLI all weather lifeboats.

The Shannon incorporates the latest SIMS (systems and information management system), is launched from a specially designed tractor borne carriage and recovered bow first either afloat or beached if weather



conditions

require. A purpose built shore facility to house the Shannon has now been built and incorporates all our facilities, an ALB boat hall, ILB boathouse, Selsey Lifeboat Station history, a souvenir shop, plus specialist training facilities, crew room, showers workshop and an office. The first Shannon class lifeboat was operational at Dungeness Lifeboat Station and our Shannon is currently in the new Lifeboat Station.



Café Grumpy's

Been serving up memories since 1999



- Family Restaurant
 - Childrens Bouncy Castle
 - All Day Breakfast
 - Pancakes & Waffles
 - Milkshakes & Ice Cream
- Take away service available

118 High Street, Selsey, West Sussex,
PO20 0QG Telephone: 01243 601814.

LAVAZZA
ITALY'S FAVOURITE COFFEE

Like us on  Grumpy's Selsey.

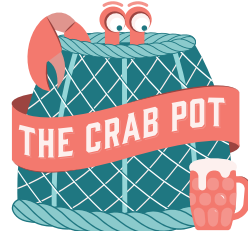




THE CRAB POT

MICRO PUB

145 HIGH STREET, SELSEY, PO20 0QE



WESTERN SUSSEX CAMRA PUB OF THE YEAR 2018

COME AND JOIN US FOR:

- * CASK ALES * REAL CIDERS * FINE WINES
- * PREMIUM LOCAL GIN AND VODKA * GREAT COMPANY

Cycling in Selsey

The flat country in and around Selsey allows for easy and pleasant cycling.

From **Medmerry Mill** there are two routes to the busy High Street. Follow Mill Lane into Crablands, then left into Paddock Lane and right into School Lane. There are cycle stands by the library at the north end of the High Street.

Alternatively, from **Crablands** turn left into West Street. Where this joins the High Street cycle parking is available at the parade of shops.

An interesting ride to the east of Selsey can include some of the blue plaques denoting local people and events, the Lifeboat Museum and some fine views. From Bonnar Road cross Hillfield Road into Seal Road, and then turn right along Grafton Road to reach Selsey Bill with its extensive coastal views. Turn round and go back along Grafton Road, turn right to East Street, Albion Road and Kingsway. This brings you to the Lifeboat Museum. Continue along East Beach Road as far as Drift Road and Park Lane to find two of the blue plaques.

Further afield, a 7 1/2 mile route runs from Pagham Harbour Nature Reserve to Chichester. Look out for the blue and white National Cycle Network "88" signs on the left as you enter the Nature Reserve car park at Sidlesham. Follow these signs to Hunston where route 88 joins route 2 for Chichester. Turner painted a famous picture of the canal and cathedral here. Take care when crossing the busy B2145 at this point. Also, some people choose to wheel cycles along the pavement for two hundred yards at North Mundham and walk across two small cattle grids. Otherwise the route is very quiet with long traffic free sections and superb views to the Downs and Chichester Cathedral.

From Chichester it is less than two miles to the Roman Palace at Fishbourne. Coming from the canal basin where route 88 reaches Chichester, go over the level crossing, immediately turn left and look for the cycle route signs in the station yard.

An excellent map "Manhood Peninsular Circular Cycle Tours" has been produced by Selsey Cycle Network. This shows other superb cycle routes mostly on quiet lanes or cycle paths. The very popular Salterns Way leads to Wittering. Links to Bracklesham, Bosham or even the foot of the Downs on the Centurion Way are all shown.



Selsey Model Boat Club

The Club meets twice a week at the pond on East Beach Weather permitting, when members sail their radio controlled boats 10.00am until noon on Sundays and from April, 4.00pm to 6.00pm on Wednesdays (weather permitting)
The first Sunday in the month is Race Day
New members welcome
or just pop along to have a look and a chat
contact Chris on Selsey 601550

Peddle Wise



01243 604980

NEW AND SECOND HAND CYCLES

FOR SALE

191 High Street

Selsey
Chichester

P020 0PZ

email; peddlewise@mail.com

Repairs
Services
Tyres
Tubes
Saddles
Peddles
Locks
Baskets
Wheels
Chains

Special
Deals On Lights
This Winter

Selsey

Fishing

The beach fisherman is fortunate in being able to choose between two entirely different beaches.

The West Beach is a relatively calm and sandy beach which favours us with the flat fish family, flounder, dab, sole, plaice, thornback and stingray. Other species often caught are silver eel, bass, dogfish and occasionally tope. Bait for these species are ragworm, squid, limpets, hermit crabs, razor fish, sand eels and mackerel.

The East Beach, with its steeply shelving shingle extending from the Bill right along to the end of the sea wall at Park Lane, is not so productive as West Beach with regard to the variety of species which can be caught, but those that are caught here, namely cod, bass, sole and flounder can be very good specimens.

The Chichester Canal is renowned for its coarse fishing. Carp are plentiful and there are good stocks of roach, rudd, perch, bream and tench, as well as some monster pike. There are also a few chubb and dace.

There is a pleasant four mile walk along the towpath of the canal and it's banks are a haven for wildlife of particular interest to ornithologists.

Day, weekly and season tickets can be purchased at Raycrafts or from the bailiffs.

Dog Control

Dogs must be on leads when being walked at:

Oval Field, Grafton Road, Selsey
School Lane Recreation Ground, Selsey

Between 1st May and 30th September dogs are prohibited from designated areas of the beach.

Dogs are prohibited from all Children's play areas.



Please clean up after your dogs!
There are numerous Dog Waste bins in the area.
You could be fined up to £1,000 for not cleaning up after your dog.

For further details, please see the notices at the Basin and Hunston Car Park or for more information call into Raycrafts in Selsey High Street.

DISCOUNT FISHING TACKLE

Rod & Reels
Starter Kits & Combos
Live & Frozen Bait
Wide Range of
Sea & Fresh Tackle
Head Torches
Bait & Tackle Boxes
Tide Tables
Rod & Reel Special Offers
..... and much much more!

**Rod &
Reel Deal**
£45.00



RAYCRAFTS

119 High Street, Selsey
(01243) 606039



Beach safety

Beaches are a place of joy and fun most of the year provided a few precautions are taken by all who use them.

Man-made hazards:

including piers, groynes, breakwaters, jetties, and sea defences etc

- Never run or climb on structures and do not jump or dive off them.
- Take great caution when walking on wet or uneven surfaces, and look out for sharp objects.
- Remember to follow any safety signs you see.
- Do not swim near man-made structures.

Never go swimming alone, tell someone where you will be and always be aware of the tides.

Inflatable toys, airbeds and small dinghies are great fun in a pool, but you are advised not to use them in the sea as wind blowing off the land makes the sea look calm, flat and apparently safe, but it can sweep an inflatable out to sea very swiftly.

- It only takes a slight breeze to blow an inflatable out to sea.

If you insist on bringing inflatables to the beach, please take the following precautions to minimise the risk:

- Children's inflatables should always have a line connected - held securely by an adult on the shore.
- Make sure children are within easy reach at all times.
- **Never** take an inflatable out in strong winds, or when you see large waves.

If you see someone in trouble phone 999 and ask for the Coastguard

Remember spending just a short time in the sun can result in sunburn.

Protect yourself.

Slip on a shirt

Slap on a hat

Slop on the appropriate sunscreen

For advice on taking to the water in all craft please contact Colvin Rae, RNLI Lifeboats Sea Safety Officer, selseyseacheck@tiscali.co.uk or phone 0781 121 7633.

Useful numbers

Area Telephone Code	01243
Emergency Services	
Police	999
Ambulance	999
Coast guard	999
Selsey Medical practice	608201 608202
Dental Emergencies	831790
St Richard's Hospital	788122
Chichester (with A & E)	
Vet	602635
Out of hours Vets	023 9266 8916
Selsey Town Council	605803
Chichesster District Council	785166
Coastguard non emergency	602274
Police non emergency	101
NHS Direct	111
National Rail Enquiries	03457 48 49 50

Taxis

Med Cars	605551
Area Cars	601701

Chemists

Lloyds Pharmacy	604725
Boots the Chemist	602217

Large scale local map

Ordnance Survey map of the Selsey area which is twice the standard scale so that footpaths are easier to follow and features easier to find.

Local information

Street map of Selsey

Available from

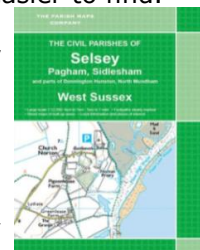
Raycrafts High St

Other maps including

Bosham & Witterings

available online

www.parishmaps.co.uk





The Selsey Shuttle

The bus, now known as the “Selsey Shuttle” was first seen on the streets of Selsey back in 1996. It had been the brainchild of a small group of members of the congregation of St. Peter’s Church who had become aware of how difficult it was to get around the town if you didn’t own a car or live near a “Stagecoach” bus stop. Hence the seed was sown for a local public bus service in Selsey to supplement the “Stagecoach” service which, because of the size of the company’s vehicles, was limited to Selsey’s main roads.

The first bus which, as many people remember, was a bright red Mercedes-Benz, was much loved by those who travelled in it. It served the town faithfully for 13 years until 2009, when maintenance and repairs were becoming too expensive.

The present bus was essentially provided through a new arrangement set up by the Government at the end of 2014, the Community Minibus Fund. This bus also has additional features financed by a grant from the Selsey Southern Co-operative store’s community fund.



All members of the public are eligible to ride on the bus, it is not part of a club and if you have a bus pass, you can ride for free after 9.30 a.m.(although a contribution towards our running costs is always much appreciated). Unfortunately, however, the bus is not designed to

accommodate wheelchairs, buggies or prams, but shopping trolleys and folding “walkers” are no problem.

The bus is owned and operated by the Selsey Shuttle Community Interest Company, and all the drivers are volunteers. If you are interested in offering your services as a driver, you are most welcome to call our co-ordinator on Selsey 605353 for an initial chat. Training and assessment will be provided at no cost, you do not need a special driving licence.



The Selsey Shuttle Community Interest Company is registered in England and Wales,

Company no. 09893177

The registered Office is: Selsey Town Council Office, 55 High Street, Selsey, Chichester, West Sussex PO20 0RB

"The Selsey Shuttle"

Timetable from 2nd May 2017

Monday, Tuesday, Thursday and Friday mornings

Service 1	A	B
Clayton Road (opp. Seaview Court)	09.00	11.00
Seal Road/Ursula Ave	09.01	11.01
Seal Road (opp. Beach Gardens)	09.02	11.02
Grafton Road (opp. Sparshott Rd)	09.03	11.03
York Road	09.03	11.03
Tythe Barn Road	09.04	11.04
Green Lane/Grafton Road	09.05	11.05
Grove Road /Orchard Avenue	09.06	11.06
Latham Road (opp. Sorting Office)	09.07	11.07
High Street (opp. South Co-op)	09.08	11.08
Health Centre/ North Co-op	09.10	11.10
Chichester Road (opp. Manor Farm Ct.)	09.12	11.12
Chichester Road /Golf Links Lane	09.13	11.13
Manor Road (Asda)	09.16	11.16
Manor Road (opp. Selsey Centre)	09.17	11.17
Beach Road (Orchard Parade)	09.19	11.19
Gainsborough Drive /Orpen Place	09.20	11.20
Gainsborough Drive /Kilwood Close	09.21	11.21
Lingfield Way /Slattsfield Close	09.22	11.22
Merryfield Drive (opp. Hanover Close)	09.23	11.23
Marine Drive (opp. Broadview)	09.24	11.24
East Beach Car Park entrance	09.25	11.25
Kingsway (opp. Ruskin Close)	09.26	11.26
Kingsway (Bus Stop)/Lifeboat Station	09.27	11.27
Sunnymead Drive (clockwise)	09.30	11.30
East Street (opp. Fisherman's Joy)	09.31	11.31
Manor Road (Selsey Centre)	09.34	11.34
Manor Road (Asda)	09.37	11.37
Chichester Road (opp. Golf Links Lane)	09.38	11.38
Chichester Road/Manor Farm Court	09.39	11.39
Health Centre/North Co-op	09.41	11.41
High Street (South Co-op)	09.43	11.43
Hillfield Road (opp. Coxes Road)	09.45	11.45
Vincent Road	09.47	11.47
Clayton Road (opp. Seaview Court)	09.48	11.48

Service 2	A	B
Clayton Road (opp. Seaview Court)	09.50	11.50
Hillfield Road /Coxes Road	09.51	11.51
High Street (opp. South Co-op)	09.52	11.52
Health Centre/North Co-op	09.54	11.54
Chichester Road (opp. Manor Farm Ct.)	09.56	11.56
Chichester Road /Golf Links Lane	09.57	11.57
Selsey Country Club(March to October)	10.00	12.00
Manor Road (Asda)	10.05	12.05
Manor Road (opp. Selsey Centre)	10.06	12.06
Beach Road (Orchard Parade)	10.07	12.07
Fontwell Road /Harcourt Way	10.08	12.08
Chichester Way (Sea End)	10.10	12.10
East Beach Road/Drift Road	10.12	12.12
Drift Road (Alleyway)	10.14	12.14
Manor Lane /Wheatfield Road	10.15	12.15
Mountwood Road/Manor Road	10.16	12.16
Manor Road (Selsey Centre)	10.17	12.17
Manor Road (Asda)	10.19	12.18
Chichester Road (opp. Golf Links Lane)	10.20	12.19
Chichester Road/Manor Farm Court	10.22	12.20
Health Centre/North Co-op	10.23	12.23
High Street (South Co-op)	10.25	12.25
Hillfield Road (opp. Coxes Road)	10.26	12.26
Vincent Road	10.28	12.28

Service 3	A	B
Clayton Road (opp. Seaview Court)	10.30	12.30
Seal Road/Ursula Ave	10.31	12.31
Seal Road (opp. Beach Gardens)	10.32	12.32
Grafton Road (opp. Sparshott Road)	10.33	12.33
Grafton Road/Green Lane	10.34	12.34
Grove Road /Orchard Avenue	10.35	12.35
Latham Road (opp. Sorting Office)	10.36	12.36
High Street (opp. South Co-op)	10.37	12.37
Health Centre/North Co-op	10.38	12.38
School Lane (opp. Library)	10.39	12.39
Horsefield Road/Saddle Lane	10.41	12.41
Spinney Close	10.43	12.43
Chichester Road (opp. Manor Farm Ct.)	10.47	12.47
Manor Road (Asda)	10.49	12.49
Chichester Road (opp. Golf Links Lane)	10.50	12.50
Chichester Road/Manor Farm Court	10.52	12.52
Health Centre/North Co-op	10.53	12.53
High Street (South Co-op)	10.55	12.55
Hillfield Road (opp. Coxes Road)	10.57	12.57
Vincent Road	10.59	12.59
Clayton Road (opp. Seaview Court)	11.00	13.00

Service 4 to Chichester will operate every Wednesday, on a pre-booked basis. Pick up times start at 13:00 hours, leaving Chichester at about 15.45 hours. To book a seat, please phone the Co-ordinator on 60 53 53 by 17:00 hours on Monday at the latest. The fare is £3.00 return.

Service 5 to Church Norton will operate on the 2nd and 4th Monday of each month on a pre-booked basis. Pick up times start at 14:00 hours, leaving Church Norton at 15:45 hours.

To book a seat, please phone the Co-ordinator on 60 53 53 by 17:00 hours on Friday at the latest.

The fare is £1.00 return.

There are no services on Bank and Public Holidays.

**FARES 40P (WITHIN SELSEY)
CONCESSIONARY PASSES
ACCEPTED
HAIL & RIDE AVAILABLE ON ALL
ROUTES**

Co-ordinator: Selsey 605353

The Selsey Shuttle has 15 passenger seats.

No smoking, food or drink allowed on board.

The Selsey Shuttle is operated and driven by volunteers for the benefit of the whole community.

The Southern Co-operative

Supported by



Pagham Harbour

March

Sunday 04 March, Discover Pagham Harbour (west) Guided Walk. Our first spring walk of the year down the 'West Side' of the harbour looking out for late winter leavers and early spring arrivals. This 4 mile walk combines wildlife and the Harbours historic past.

10am (duration 3 hours)

Booking essential,

£7 per person / £4 members

Saturday 10 March, Great British Spring Clean. Join us and the Friends of Pagham Harbour for The Great British Spring Clean, clearing our beaches of litter and making a difference whilst in good company. This year we are focusing on Medmerry - meet 10am at Earnley car park PO20 7JL. Free

Sunday 25 March, Someone to Guide You.

Unsure of what that bird is? Our friendly guides will be at our brand new Ferry Pool Hide, Pagham Harbour to help you spot and identify the wildlife that you see.

10am – 3pm Drop-in, Free



April

Sunday 01 April, Someone to Guide You.

Unsure of what that bird is? Our friendly guides will be at our brand new Ferry Pool Hide, Pagham Harbour to help you spot and identify the wildlife that you see.

10am – 3pm Drop-in, Free

Sunday 08 April, Discover Pagham Harbour (north) Guided Walk. A gentle spring walk along 'The Tramway' and around the north part of our reserve. This 3 mile walk combines wildlife and the Harbour's historic past, while looking for spring arrivals.

10am (duration 3½ hours)

Booking essential,

£7 per person / £4 members

Saturday 14 April, Artists Wildlife Painting Workshop. This all-day workshop gives an introduction to basic techniques of watercolour painting combining a little theory with a lot of practical application and advice. Although wildlife based, the principles can be applied in a wider context. The session is aimed at beginners and those returning to an old hobby after work. Good quality paints, paper and brushes will be supplied, just bring your enthusiasm.

9.30am (duration 7 hours)

Booking essential, £20 per person / £16 members

Sunday 22 April, Discover Medmerry (West) Guided Walk. With the flora and fauna busily getting on with the trials of life, this is a great time to join our guides for a walk round the west side of Medmerry. Breeding avocets, corn buntings, yellowhammers and cuckoos are among the potential cast of this 4 mile walk which combines birds and wildlife with Medmerry's history and its creation into the reserve you see today.

10am (duration 3½ hours), meet at Earnley car park PO20 7JL at 9.50am.

Booking essential, £7 per person / £4 members



May

Saturday 05 May, Dawn Chorus. Join in International Dawn Chorus weekend and decipher this spring phenomenon with our guides in a 'secret' part of our reserve. Close your eyes and soak up the sound of the birdsong as it gathers from a single voice into the crescendo of a full orchestra in a part of the reserve not open to the public.

4.30am (duration 2½ hours)

Booking essential,

£8 per person / £6 members

Tuesday 09 May, Batty about bats! Bat-detectors in hands, discover which bats call Pagham Harbour their home. Learn more about these intriguing nocturnal mammals with an evening stroll around Church Norton with Hampshire Bat Group's, Nik Knight.

7.45pm (duration 2 hours)

Booking essential £12 per person / £9 members

Saturday 19 May, Marvellous Moths. Moths are far from dull – some are masters of camouflage, while others are as bright and beautiful as butterflies. Join us as we open up our moth trap and reveal which super moths have been caught from the night before.

8 am – 9 am, £2 per person / £1.50 members

June

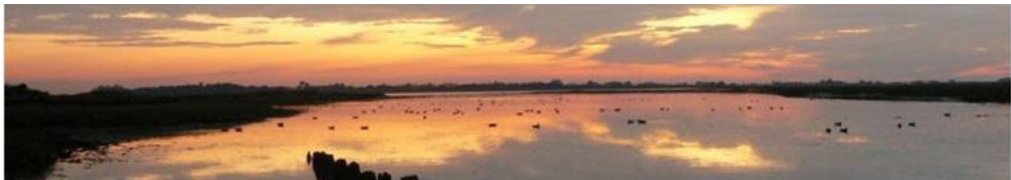
Saturday 02 June, Orchids in June. Join us looking for gorgeous orchids in one of our 'secret' places. A chance to marvel at these mysterious plants in a part of the reserve not open to the public.

11am (duration 1 hour) Booking essential, £4 per person / £2 members

Saturday 09 June, Wildlife Photography Workshop. This all-day practical workshop gives an introduction to basic techniques for wildlife photography, combining theory with opportunities to practice what you learn on our beautiful reserve.

8.30am (duration 8 hours)

Booking essential, £18 per person / £14 members



October

Sunday 07 October, Wildlife Photography Workshop. This all-day practical workshop gives an introduction to basic techniques for wildlife photography, combining theory with opportunities to practice what you learn on our beautiful reserve.

8.30am (duration 8 hours)

Booking essential, £18 per person / £14 members

Plus we have FREE self-guided family activities and monthly **Wildlife Challenge** sheets available every day from our Visitor Centre.

Family events Tuesdays and Thursdays throughout all school holidays except December.

Full events listing on our website: www.rspb.org.uk/paghamharbour

To book any event please contact us by emailing pagham.harbour@rspb.org.uk or calling **01243 641508**. All events start at the Visitor Centre, unless otherwise stated.



East Beach



The Fruit Basket

East Beach

602398



Top Quality

Fruit & Vegetables

Large Stock of Pet Food

Fresh Cut Flowers Pot Plants

Open 7 Days a Week

FREE Local Deliveries

Ian Francis & Sons

Family Butchers & Delicatessen

BBQ Meats &

Real Homemade Pies

always pleased to meet you

always meat to please you

tel: 01243 - 607697



3 Orchard Parade,
East Beach, Selsey



Thank you to all the people who let us use their photos in this guide including Ruth Mariner Tania Savitsky J Salmon Ltd. and many others.

Free Parking and close to East Beach
Dand and Children's Play Area

Pretty's Candy Box

4 Orchard Parade,

Selsey PO20 ONS.

West Sussex.

Shop locally
Great value local service

Life-Boat Slips, Selsey.



Nice Plaice

All takeaway quality fish & chips

11.45 am - 2.00 pm Tues - Sat

4.45 pm - 9.00 pm Mon - Sat

Phone orders taken

(except Fridays)

local functions catered for

Tel : 01243 601616

7 Orchard Parade Selsey

This guide has been designed and published by: Selsey Life Ltd .
Selsey .West Sussex tel: 01243 602729
email: selseylife@btinternet.com

Whilst every effort has been taken to ensure the accuracy of the information contained in this guide, Selsey Life and cannot accept any responsibility for any errors, omissions or inconvenience there from. No part of this publication may be copied or reproduced, stored in a retrievable system or transmitted in any form or by means electronic, mechanical, photocopied, recorded or otherwise without written permission of the publisher.

© Selsey Life 2018

East Beach

Manhood Wildlife & Heritage Group

The following are four distinct green areas, all within easy reach for day visitors to Selsey or those staying longer. Down to the hard work of a few volunteers, plus support of Selsey Town Council and Chichester District Council.

East Beach Pond (situated alongside the East Beach car park opposite the sea)
A dedicated area of birdlife, wild flowers and peace and quiet, now much admired.
Awarded Gold Certificate 2012 South & South East in Bloom show.

Selsey Common (just past the first fish market to the right of East Beach car park)
Formally dominated by large bramble bushes. Now, some of this is being cleared to make it suitable for green games and paths for dog walkers.

Sensory Gardens (found at top of Manor Green Park area to rear of Selsey Centre)
An area within the Manor Green Park, dedicated to the cultivation of plants, shrubs and trees renowned for their perfumed leaves or foliage.

Community Orchard (to the right of the Selsey Centre looking away from sea) An area fenced off from the main Manor Green Park, set out with 25 fruit trees.

Manor Green Park (park area surrounding Selsey Centre) A green park site suitable for children's games, with a well equipped slide and swings area.
Also has a sectioned-off dog training facility.

East Beach Stores
5-6 Orchard Parade
East Beach
Selsey
West sussex
PO20 ONS
01243 602275

OPEN
Mon-Thurs
6am to 9pm
Fri and Sat
6am to 10pm
Sunday
7am to 9pm

Amazing prices on beers, wines & spirits

Visit your local convenience store

Local service with a chat and a smile

Premier
Amazing Value Locally



Out & About

Fishbourne Roman Palace

Salthill Road, Fishbourne, Chichester PO19 3QR 01243 785859

The Palace was discovered by accident during the digging of a water main trench in 1960. The discovery led to nine seasons of excavations that showed the site had developed from a military base at the time of the Roman invasion in AD43 to a sumptuous Palace by the end of the first century.

Throughout the year there are lots of exciting special events from Roman Soldiers and Theatre performances to Musical concerts and Cooking demonstrations. There are a wide range of facilities on site including café, car park and disabled access and it is easily reached by public or private transport.

Tangmere Military Aviation

Tangmere, Nr Chichester PO20 2ES 01243 790 090 www.tangmere-museum.org.uk

This Museum was established in 1982 on the old RAF Tangmere airfield. From its beginnings in 1916, through its illustrious service as one of Britain's front line fighter bases during WW2 and on to its key role as home to the world speed record breaking aircraft of the High Speed Flight in the post war years it has occupied a unique place in aviation history.

The museum contains countless fascinating exhibits. Here you can see priceless historic aircraft such as Neville Duke's world record breaking Hawker Hunter, actual equipment used by the brave SOE agents who were carried into occupied France on 'black Lysander' flights from Tangmere, flight simulators where you can try your hand at flying, a full sized replica of the very first Spitfire prototype and more. Much more. There is something for all the family to see and do.

Chichester Cathedral

Situated in the heart of Chichester close to the market cross.

For 900 years Chichester Cathedral has welcomed visitors through its doors – worshippers, seekers, tourists, people of all faiths and none. There is an opportunity here to experience something built to give a direct experience of the divine to those who entered. For those who worship here today, it still has that power.

Chichester Museum

Tower Street, Chichester. 01243 775888 go to www.thenovium.org

The Novium is the museum and tourist information point for Chichester District. Discover intriguing local stories connected with extraordinary artefacts in this contemporary, state-of-the-art museum.

Chichester Planetarium

Kingsham Road, Chichester, PO19 8RP 01243 774400 www.southdowns.org.uk

The Planetarium operates throughout the year, but is not open every day. 100-seat Star Theatre, with planetarium projector and dome (10 metre diameter). "A Centre for Scientific Excellence in the South of England."

Weald & Downland Museum

Singleton, Chichester PO18 0EU 01243 811363 www.wealddown.co.uk

Set in 50 acres of beautiful Sussex countryside is a very special place to wander amongst a fascinating collection of nearly 50 historic buildings dating from the 13th to the 19th century, many with period gardens, together with farm animals, woodland walks and a picturesque lake.

Chichester Cinema

Chichester Gate, Chichester PO19 8EL www.cineworld.co.uk/chichester

Bowling

Chichester Gate, Chichester PO19 8EL 01243 776633 www.lakeside-superbowl.co.uk

New Park Cinema

New Park Road, Chichester PO19 7XY 01243 786650 www.chichestercinema.org



viento
DELEVANTE

Mediterranean Restaurant and Tapas Bar

Seeing Can Be Deceiving,



Tasting Is Believing

**HOME DELIVERY
& TAKEAWAY
SERVICE
AVAILABLE**

*TAKEAWAY SERVICE AND DELIVERY SUBJECT TO AVAILABILITY

**75 HIGH STREET
SELSEY**

01243 603 906

FOLLOW US ON FACEBOOK VIENTO DE LAVANTE

LOTS OF OFFERS ADDED DAILY

WWW.DELEVANTE.CO.UK

Offers available 1st October to 15th June



SUNDAYS

**BUY ANY MAIN MEAL
& GET ANY STARTER
OR DESSERT FREE**

**3 TAPAS
£9.99***

**TUE
TO
THURS
ALL
DAY**

**ANY 2 TAPS & 200ML
PROSECCO OR GLASS OF**

SANGRIA £11.95

FRIDAYS ONLY

(offer prices subject to
management discretion)

A Change is as Good as a Rest!

Come and discover The Seal, 15 minutes from Chichester and a few minutes from the beach!

The restaurant at the Seal in Selsey has a reputation for serving excellent quality food at reasonable prices. We are also one of Selsey's best-loved pubs, with a well-stocked bar in which to enjoy a wide range of wines, sprits and of course real ales.

We could be one of your New Favourite places!

— THE — SEAL

Bar · Rooms · Dining



6 Hillfield Road • Selsey • Chichester • West Sussex • PO20 0JX
T: 01243 602461 • E: bookings@the-seal.com • www.the-seal.com



TheSeal.Selsey



@TheSealatSelsey