

NEWS • GARDENING • WHAT'S ON • WILDLIFE • SPORT

# Selsey Life

Community Magazine

NOVEMBER 2020  
ISSUE NO. 261

**50p**

*in the yellow pots*

[www.selseylife.weebly.com](http://www.selseylife.weebly.com)

f Find us on  
Facebook



All images © by Coastaljj  
See inside for a chance to win their new calendar







# SALTINGS DINER

## EAT IN OR TAKEAWAY

WE'RE  
NEAR THE  
WINDMILL

Open 7 days a week  
**GENERAL  
PUBLIC  
ARE  
WELCOME.**

**2 MEALS  
FOR £10**

**FULL ENGLISH  
BREAKFAST**  
ONLY **£4**



**HOT FRESH  
DONUTS**

**1/4LB CHEESE  
BURGER & CHIPS**  
ONLY **£4**

**PLUS HOT DOGS, ICE CREAMS  
AND LOT, LOTS, MORE!**



**OPEN ALL DAY  
9AM TILL LATE**

**ALL ENQUIRIES: 07989 534852**



WEST SANDS FUN FAIR AND SALTINGS DINER, WEST SANDS HOLIDAY PARK, MILL LANE, SELSEY, WEST SUSSEX PO20 9BH

With the new lockdown introduced just as we were going to press, we have tried where possible to update all of the entries where relevant, but as we may have missed some we would urge you to contact any persons or organisations before you go to them to ensure the events are still to take place.



## SELSEY LIFE NEEDS YOUR 50P!

Please be warned. For the September edition we collected just over half of the expected money for the magazines. This means that a lot of people either did not pay for the magazine, or paid less than the 50p. At the time of writing we do not know what the results are for the October issue, but if the cash returns are in the same region then we regret we will have to stop issuing the magazine.

We would welcome your feedback on this, is it perhaps, as has been suggested, that change is not always to hand? Would £1.00 be easier? Do you perhaps pay contactless for other shopping? We would hope that you would have the 50p ready for the magazine anyway.

Please do not take the magazine without payment, you are not only stealing from us you are also stealing from all of those who do pay.

**You have been warned!**

Would you like to sponsor the Selsey Life magazine? If not the full magazine, how about sponsoring a page for a month for £20.00? We may not be able to guarantee what page, it would be on a first come basis, but we would try to match you if possible.

Is this of interest? Please email the Selsey Life in the usual way, [selseylife@btinternet.com](mailto:selseylife@btinternet.com).

Lloyd Bank sort code 30-98-97, account number 43314960

Our 5% offer for anybody who gets us new advertisers still stands.

Stay safe everyone, and follow the social distancing guidelines. Remember, Hands, Face, Space.

### 'COAST AND COUNTRYSIDE' CALENDAR - 2021

Our new 2021 calendar, featuring images taken in Bosham, Selsey, The Witterings, Pagham Harbour, Chichester Marina, Earmley, Siddlesham and Church Norton. Each image directly relates to the relevant month.

Large glossy 42cm x 30cm format, with plenty of space for making notes and calendar entries. These A3 sized calendars are spiral bound to hang from the top, and printed on 200gsm gloss paper.

Each page also has the previous and following month as a small section at the bottom.

Makes an ideal gift for family and friends, and with the reduced postage for each additional calendar, it won't break the bank either.

Please allow Five working days for delivery once ordered.

Alas we can only ship to the UK.

Free delivery in the UK!

Website: [www.coastalj.co.uk](http://www.coastalj.co.uk)  
Find us on Facebook as @coastalj



Coastalj have generously donated one of the above calendars to the Selsey Life for this month's competition.

To win the calendar, simply find the Selsey Seagull hidden somewhere in the magazine, (not this page) and then complete the coupon below and post in one of the two boxes at either Raycrafts, 119 High Street, or Pretty's Newsagents at 4 Orchard Parade. The competition closes on **Thursday 26th November** at noon. One entry per coupon, copies not accepted. Good luck.

Last month the Seagull was on page 14 on the owl's wing. The winner was Mrs A. Neave, drawn by Hannah Keen in the Selsey Post Office. We hope it made her feel a bit better after her accident on the ASDA roundabout.



Name :

Contact phone number and address:

(We cannot post prizes unless you wish to pay for it)  
I found the seagull on:

One entry per coupon Copies not accepted



The Reception and Year One children returned to school this September to find a brand new outside area. The children have a slide, climbing frame and many other things in addition to encourage their learning and development. They are particularly pleased with the covered area as we can still get outside to learn in most weathers with protection from the elements.



Celebrating Harvest as a school looks very different this year. More than ever the feeling is that we should be thankful for what we have, and should share this with others. The



children have explored the Harvest theme and we were able to put together a video of the work done to share as a school and community. Here are some pictures from the Year 2 class to give you a taste of Harvest in 2020.



**CORONAVIRUS**

**KEEP WEST SUSSEX SAFE**

west sussex county council

Visit our website for the latest advice and updates »

**SPREAD THE MESSAGE NOT THE VIRUS**

**#KEEPWESTSUSSEXSAFE**



## Seal Primary Academy recognises World Mental Health day.

World Mental Health day is recognised globally on 10th October throughout the world each year. This day is to shine a spotlight on the importance of speaking about and looking after our mental health. On Friday 9th October all of the children and staff at Seal Primary Academy came to school wearing something yellow to show young people that they are not alone with their mental health. This brightened up the school and brought everyone together, virtually, at a time when we are all feeling very separate. The children took part in a whole school art project which has been displayed at the very front of the school for parents and the community to see.



## Seal Primary Academy virtual tour

Children from Seal Primary Academy were delighted to be involved in the making of a virtual tour of their school recently.

COVID-19 restrictions have prevented schools from holding the traditional 'Open Days', which are helpful to parents who may be considering the school for their children.

Melanie Strachan, Headteacher of Seal Primary Academy, decided the restrictions would not prevent her from showcasing her school - and called upon the help of her pupils and a local film company, Matchcut Media, to produce a virtual tour film.

The film not only presents the facilities and grounds, but also explains the vision, values and ethos of the school. Viewers are given a glimpse into daily lessons at the school, and some of the children were filmed talking directly to the camera.

Seal Primary Academy are really proud to be able to showcase their school using a virtual tour and hope that parents will choose for their children to join the Seal Primary family. After school tours are available, please contact the school Welcome Office for more information. [office@seal-tkat.org](mailto:office@seal-tkat.org)

Please see the video link below.

<https://vimeo.com/466101799>



The Kemnal Academies Trust is a charitable company limited by guarantee registered in England and Wales under company number 7348231. Its registered address is The Atkins Centre, Kemnal Technology College, Sevenoaks Way, Sidcup, Kent DA14 5AA. Seal Primary Academy is a business name used by The Kemnal Academies Trust.

## COPYRIGHT WARNING

No part of this publication may be copied or reproduced, stored in a retrieval system or transmitted in any form or by any means electronic, mechanical, photocopy, recording or otherwise without the prior written permission of the publisher ©2020. Selsey Life Ltd

## Selsey Pavilion Trust

The Selsey Pavilion (formerly Selsey Hall & Selsey Cinema) has stood at the heart of the High Street since 1913. Nowadays many will associate it with Chaplin's Coffee House, the Art Deco façade but sadly not much more.

The Pavilion Cinema closed in 1964 and subsequently served as a warehouse additionally staging occasional performances. However, it has a rich, albeit chequered, history.

The Selsey Pavilion Trust was formed with the aim of saving and restoring the Pavilion. This will be a long and arduous task even without the presence of Covid 19. Therefore, the trustees initially intend to create greater awareness of the Pavilion's rich heritage through various means.

The trust has a Facebook page at: [facebook.com/selsey.pavilion](https://facebook.com/selsey.pavilion) which is updated on a weekly basis. The trust is in the process of creating a website which will soon come into fruition. Finally, the trust has gratefully received permission from Chaplin's to display artefacts and photos from the halcyon days of the Pavilion.

The trust welcomes any support through the loaning of photos, or artefacts, that can be copied. Any memories of the Pavilion, either orally or in writing, would be gratefully received. Financial support is always most welcome. Amazon Smile is an easy way to donate when making an online order from Amazon at no additional cost. We just ask that you visit [smile.amazon.co.uk](https://smile.amazon.co.uk) and set the Selsey Pavilion Trust as your chosen charity. It's even easier to set this up using Amazon's shopping app, just visit settings and turn on 'Amazon Smile' from within the app itself.

More information can be obtained by contacting [trust@selseypavilion.org](mailto:trust@selseypavilion.org)



## 'The Shants' want to say "Thanks Selsey!"

The Selsey Shantymen wish to say a great big 'Thank You' to the people of Selsey for their ongoing support and generosity. For the last month or so 'The Shants' (in a group of 6) have been singing their Sea Shanty songs on the Apron at Selsey Lifeboat Station; locals and visitors alike have been attending at 2pm to 'hum' along and support both the singing and Selsey Lifeboat with appreciative applause and hard cash in the RNLI buckets.

After 3 sessions each lasting about an hour, over £550 had been collected for Selsey RNLI Lifeboat station at the last count. Not only are The Selsey Shantymen saying thank you on behalf of the RNLI but they have recently been notified that the Group have just been awarded a Local Community Grant by Selsey Town Council as assistance towards equipment that they will need to facilitate future performances without straining their voices too much in these strange times.

The Selsey Shantymen will be performing regularly at 2pm on the 2nd and 4th Sunday at Selsey Lifeboat Station (weather permitting) Check out social media for updates. If you are a local business and would be interested in sponsoring 'The Shants' with their endeavours in supporting local Charities and good causes you can contact them via [ahoy@theselseyshantymen.co.uk](mailto:ahoy@theselseyshantymen.co.uk) or call Sloop John B on 07826 556041. "See you on the Apron!"



## THE VICTORY CLUB



## Remembrance Sunday

With regret, because of the Covid 19 restrictions and the new lockdown, the Remembrance Day service has had to be cancelled.

People can still lay wreaths, but please not all at 11 o'clock to avoid crowds.

We can all still show our support by buying a poppy or a pin, and by standing on our doorsteps for the two minute silence.

Although these are difficult times let us still remember them.

Thank you

Should you have any queries please contact Lyn Reeve on 07969905402.



## 1st Selsey Brownies moments of Fame

Intrigued already? Our Brownie Toadstool was looking very sad and had holes in places, the emblems were hardly visible and it was getting very rickety. I'd looked at how I could repair but didn't know where to start. The Brownie toadstool has been in 1st Selsey for as long as anyone can remember. For those not involved in Guiding the toadstool is a wooden structure about ½ m tall, with a canvaslike covering with some of the Brownie six emblems on - Imps, Pixies, Gnomes (sixes are the small groups the girls work in during the unit meeting). It is used for when the girls want to take their promise; for when girls move up from Rainbows (aged 5-7) to Brownies and then again when they move from Brownies to Guides (10 – 14).

In December 2019, I happened to be watching the Repair Shop and had a thought they might know how to repair it. An email was sent to them explaining that it was coming up to 75 years old and it would be great to have it restored for when we celebrated 75 years of our unit starting.

Things moved very quickly, within a day or so I was asked if they could collect the toadstool for them to look at and see what was possible. A very puzzled young lady arrived asking for Brown Owl and said she'd been told to collect a toadstool, I've no idea what she thought she was picking up but she was extremely relieved when she saw what it actually was. I found out later she thought her boss had lost the plot and sent her on a wildgoose chase! Within a day I had a phone call to say they would love the chance to restore it - what did we want them to do with it, how much restoration etc. We didn't want it to look brand new as its' worn look is part of the history of the unit.

Fri 13th December found me (Brown Owl) at the Repair Shop workshop at the Weald and Downland Museum for filming. It wasn't until I got there that I realised it was actually going to happen, as if you'd got that far they were definitely going to film and then restore your item. It was fascinating to see how they filmed me arriving, handing it over to the experts Will and Suzie and how they filmed it all indoors and out. They were as charming and lovely as they come over on screen. It did feel strange handing over and leaving our very precious toadstool.

After Christmas I got a phone call to say it was ready and we discussed about collecting it. The film crew liked the idea of handing over and the reveal taking place at our usual Brownie meeting.



Before restoration



After restoration



22nd January 2020 - The film crew arrived at our meeting hall. The activity for the evening was one of the new programme activities "In a Fix" – which we thought was apt as it involved using various tools to create our string art. At this point the Brownies had no idea that the toadstool had been restored and so were just thrilled that the Repair shop team were at our meeting - it was interesting how many had seen or heard of the programme. The grand unveiling took place to an absolute stunned silence and then an amazing cheer. The leaders and I too were stunned as we had last seen it before repair so had no idea what to expect. The Brownies gathered round closer to look at it, fascinated they could see the six emblems again, it had no holes in and the bottom wasn't loose and wobbly. Then looking closely at the base we spotted a bit of wood that had been left uncovered – here was clearly written the name J.A. Morey 1924. So much older than we thought it was – our unit registration says 1945 so we now need to do more work to find out when the unit was actually formed. Even more astonishing that we had a Brownie with the surname of Morey in our unit and she was there that night. Later research seems to confirm that it was indeed her great grandad that had probably made it.

What an amazing experience this has been, I now can't look at the programme and team without thinking, I know how that bit was filmed etc. 1st Selsey Brownies are beyond grateful for the brilliant restoration work the team have done on our Toadstool. Now we just have to look after it more carefully so that it will last another 100 years. I also could not have done this project without the help of all our leadership team, the Brownies and Mums, the many people I frantically contacted for photos and Girlguiding for supporting it too. I do hope that you managed to watch the programme and that you felt as proud as we have to have been involved in the programme.

So we now have a sturdy, useful toadstool for the next girl to use at her Brownie promise ceremony and for many, many more in years to come. The big unanswered question is – so how old is our unit? Was the toadstool made in 1924 for the unit opening? Or was it made sometime after the unit was opened? We would love to hear if anyone has knowledge of when we were started. So we could be celebrating our centenary in 2024 unless someone knows different. Thank you. Anne Wheway, 1st Selsey Brownies. Contact [manhooddc@gmail.com](mailto:manhooddc@gmail.com)

Although we are not currently meeting indoors like usual we are still running via zoom and outdoors where possible and if any girls are interested in joining please use the email [manhooddc@gmail.com](mailto:manhooddc@gmail.com)

1) Who turned a can of soup into a work of art?  
2) Which Australian artist painted a series of Ned Kelly pictures?  
3) Which novel was unfinished at Charles Dickens' death?  
4) What is the Artful Dodger's real name? (Not Jack Wild!)

5) Who is Bertie Wooster's manservant?  
6) What is the name of Captain Pugwash's ship?  
7) Inspector Lestrade is constantly outwitted by which detective?  
8) "Hill Top" was the Lake District home of which children's author?



## Dementia Support – three ways this winter

Vulnerable and older people living with dementia face real challenges this winter as the coronavirus pandemic continues. In response, local charity Dementia Support is now offering its services three different ways – by phone, online and, when possible, face to face at its dementia hub, Sage House in Tangmere near Chichester.

One local customer says the different ways of accessing services have made a real difference to herself and her husband, who was diagnosed with dementia four years ago.

"Dementia is hard at the best of times, but this year has been a real struggle. We've been on the phone constantly to Sage House which has been a real lifeline, and in recent weeks we've been in for face to face support. Getting online took us a while but now I know how to do it, we join in the activities. It's good to see friendly faces and we have a good laugh. It really breaks up the week and helps us both cope."

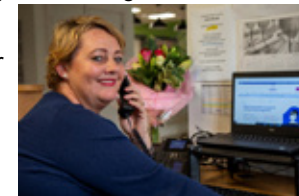
Since the start of the pandemic, Dementia Support has been working with customers to develop alternative ways of supporting people, and now ready for winter, they are offering dementia services three ways:

- By phone – speak to a Wayfinder for free emotional and practical support tailored to your unique circumstances
- Online – access a range of free activities, video calls with a Wayfinder, and Chatter Tables
- Face-to-face (by appointment and only if possible within current government guidelines) – services at Sage House dementia hub in Tangmere include quiet hairdressing, activities and respite care.

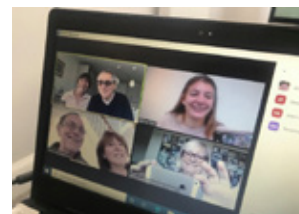
To find out more about dementia services, phone Dementia Support at Sage House on 01243 888691 or email [info@dementia-support.org.uk](mailto:info@dementia-support.org.uk).

The charity's fundraising has been hard hit during the pandemic, whilst the number of people needing support has increased. To donate to Dementia Support's Christmas Appeal, please go to <https://www.dementia-support.org.uk/donate>.

Donations received online between 12pm on 1 December and 12pm on 8 December will be doubled to fund desperately needed dementia services this winter.



Louisa, one of Dementia Support's specialist advisors, offers support over the phone as well as by video call, email and, if possible within current government guidelines, face to face.



Local people get together for one of Dementia Support's online Chatter Tables



Face to face dementia services are available at Sage House dementia hub in Tangmere when safe to do so within current government guidelines

## Selsey &amp; District Lions Club



## Christmas Carol Float Routes December 2020

**Sun.6th: 5.00pm** Manor Road, Mountwood Road, Broomfield Road, Elm Tree Close (+cul-de-sacs), Manor Road, Grafton Road (Up to Grove Road), Chayle Gardens, Western Road

**Mon.7th: 5.30pm** Mundham and Runcton area

**Tues.8th: 5.30pm** Beach Road, Marrisfield Place, Kingsway, Albion Road, Sunnymead Drive & Close

**Wed.9th: 5.30pm** Church Road, St. Peter's Crescent, Wellington Gardens, Malthouse Road (+cul-de-sacs), High Street, East Street, North Road, Netherton Close.

**Thurs.10th: 5.30pm** Merryfield Drive, Burlington Gardens, Tretawn Gardens, Constable Drive, Gainsborough Drive, Landseer Drive, Hannover Close, Lingfield Way, Littlefield Close

**Fri.11th: 5.00pm** Manor Farm Close, Chichester Road, Hunisett Close, Millington Drive, Fidler Close, Petts Close, Robinson Close

**Sun.13th: 5.00 pm** Marine Drive, Broad View, Eastway/Bank, Fontwell Road, Gillway, Chichester Way

**Tues.15th: 5.30pm** Hunston: Foxbridge Drive, St. Leodegars Way, Orchard Side, Westlands Road, Little Boultons. **(For Safety Reasons there will be no collections on the B2145 main road)**

**Wed.16th: 5.30pm** Ursula Square & Avenue, Seal Road & Square, Mariner Gardens, Hillfield Road, Bridge Way, Peachy Road, Green Lane, Meadowlands, Latham Road, Langton Close, High Street, Bridleway, Croft Way

**Thurs.17th: 5.30pm** Grafton Road (from Grove Road), Lifeboat Way, Coxswain Way, Wright Way, Barnes Close, Canadian Crescent, Pacific Way, Jones Square, Beacon Drive, Lawrence Close, Mixon Close, Sparshott Road, Pennycord Close

**Fri.18th: 5.30pm** East Beach Road, Drift Road, Solar Drive, Tranquillity Way, Lunar Crescent, Orbit Gardens, Halley View, Jodrell Place, Wheatfield Road, Manor Lane

**Sun.20th: 5.00 pm** Sidlesham area

**Mon.21st: 5.30pm** West Street (+cul-de-sacs), Bonnar Road, Clayton Road, Seagrove, Vincent Road, Coxes Road, Warner Road

**Tues.22nd: 5.30pm** Bill House, Byways, Solent Way, Seal Road, York Road, Tythe Barn Road, Green Lane, Windsor Road, Grove Road, Orchard Avenue, Southern Road, Longacre (Beaufield), Woodlands Road, Beach Gardens, Cherry Gardens, Ursula / St. Itha Road

**Wed.23rd: 5.30pm** Old Farm Road, Spinney Close, Granary Lane, Mc.Nair Close, Honeysuckle Lane, Blackberry Lane, Donaldson Close, Colt Street, Acorn Close, Horsefield Road, Coppice Lane, Saddle Lane, Paddock Lane, Horseshoe, Large Acres, Crablands

**Static Collections: Sat.5th** Asda, **Sat.12th** East Beach, **Sat.19th** Co-Op, **Thurs.24th** High Street

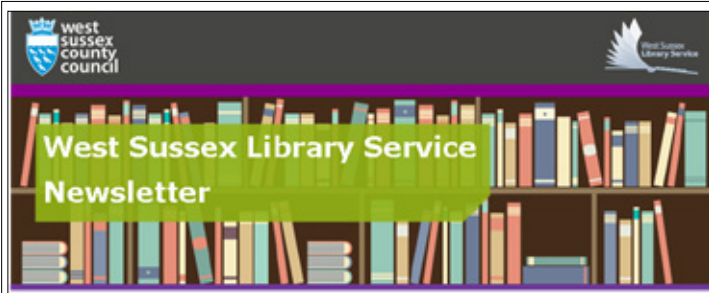
The above will depend on Covid 19 regulations at the time

**For all your local advertising needs**  
**contact us at [selseylife@btinternet.com](mailto:selseylife@btinternet.com)**  
**or phone us on 01243 602729**  
**Also Like us on Facebook**





All toy donations will be given towards the care shop as they can distribute appropriately where the foodbank don't know the details of what's needed. Due to the current pandemic people can't attend the foodbank, instead it's being delivered.



### NHS Test and Trace

It has been lovely to see so many of you returning to libraries in recent weeks; we really appreciate your patience as we adjust to new ways of working.

Since Thursday 24 September we have been displaying posters (pictured) that work with the NHS COVID-19 app. By scanning the QR code on the poster via the app, you are giving your details to NHS Test and Trace, just as when you fill in our paper records on entry.

You can find out more about what the app does and how it works by watching this video: Introducing the NHS COVID-19 app. If you don't have the app we still strongly encourage you to give us your contact details at the library door, but there's no need to do both.

### Face coverings in libraries



We are complying with the new requirements for staff to wear face coverings in the library and continue to expect customers to do the same, as per government guidance on face coverings. As before, we recognise that some people are unable to wear

a face covering and are therefore exempt from the legal requirement.

If you are exempt from wearing a face covering, it will really help library staff if you carry an exemption badge or card. You can download an exemption card or badge for free.

Finally, we appreciate that communication can be tricky when wearing a face covering. Library staff are not required to wear masks while behind a Perspex screen and are very happy to give you assistance at one of our information desks.

### Winter Opening Hours at Selsey Library



From Monday 2 November we will be introducing revised winter opening hours. This will see an extension of the current opening hours at your local library, offering more opportunities for browsing, using computers and study space (where available).

The new timetable will mean that libraries in our largest communities will be open throughout the day, including over lunchtime for working customers. Families will also be able to visit after school and every library will be open on a Saturday for part or all of the day.

The new opening hours at Selsey Library are:

Monday 2.00pm - 5.00pm

Tuesday 2.00pm - 5.00pm

Thursday 10.00am - 1.00pm

Friday 10.00am - 1.00pm

Saturday 10.00am - 1.00pm



And still our quest for the most unusual location the Selsey Life is read continues:

Eddie and Sue Clamp visited the island of Favignana off Sicily last month (September). While there in the 29 degrees of heat they remembered the March Selsey gales.

The pictures are of the harbour and the old Tuna fishing fleet anchor grave.



Eddie even got to dive on a 2000+ year old Roman wreck.

Can you do better? Please let us know.

**The Fruit Basket**  
East Beach  
602398

**XMAS HAMPER SPECIAL**

10lb Potatoes	1 Iceberg Lettuce
4 Baking Potatoes	1 Cucumber
2lb Washed Mids	1lb Tomatoes
1 Cauliflower	Bunch Spring Onions
1lb Sprouts	1 Packet Radishes
1 Cabbage	1 Punnet Cress
4 Parsnips	1/2lb Mushrooms
1 Swede	1 Dozen Eggs
2lb Carrots	
4 Pears	6 Apples
6 Bananas	Bunch of Grapes
2 Grapefruit	Packet of Dates
1lb Satsumas	Bag Mixed Nuts
1lb Clementines	
4 Oranges	
2 Lemons	

All the above delivered to your door for

**£33**

Half size hamper available for £18

Due to Covid we may have to substitute some items at the time the hamper is issued.

- 9) Where in London is Poets' Corner?
- 10) How many lines has a clerihew?
- 11) What was Percy Shelly's middle name?
- 12) Which US crime writer worked for the Pinkerton Detective Agency?



Dear Parents of younger children,

This year due to the Covid 19 virus Selsey & District Lions Club have been unable to carry out most of our normal fund raising events. However we have tried to continue supporting needy causes as well as keeping our fleet of mobility scooters on the road.

To try to offset this loss, this Christmas in addition to our Christmas float we are going to try something new. A Father Christmas letter service. We will provide Father Christmas letter boxes in strategic locations around the Town. Your Child writes a letter to Santa, you add a cheque to the value of £3 to £5 made out to Selsey & District Lions Club. We will then send a suitable reply from Santa to your child.

Please make sure you include your child's name and address, if this is a success it could be repeated year after year. Your support in this venture will be very much appreciated.

May I also remind you that every penny we raise from the public is used in one of our welfare projects.

**None of it is taken up in administration costs.**

Brian J. Hall

Presiden Selsey & District Lions Club

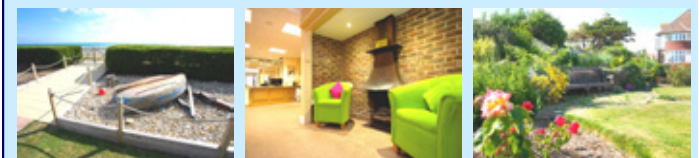
## Tenchley Manor Nursing Home

Our team extends a warm welcome to you and your family and friends



Providing personalised nursing care to physically disabled adults and elderly residents by our professional staff.

The accommodation is light and spacious with a choice of areas where residents can welcome family and friends. Large landscaped gardens stretching down to the shoreline with magnificent views across the English Channel towards the Isle of Wight.



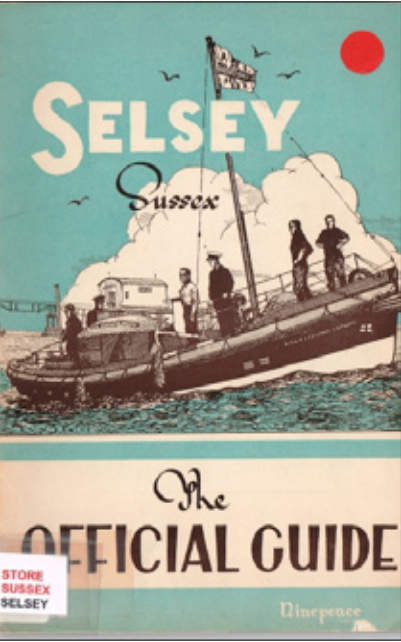
Ursula Square, Seal Road, Selsey, PO20 0HS

Tel: 01243-606060

[www.cheerhealth.co.uk](http://www.cheerhealth.co.uk)



You may wonder what an amateur local historian does in lockdown. On the other hand, you may have a jolly good idea of what is going on and you would probably be right. I surfed the Net looking for something, anything, interesting and I found this:



As you can see, originally it cost Ninepence (9d). This advert caught my eye, on the front inside cover:

**F. G. WINSLADE & SON**  
*Builders and Contractors*

Property Repairs promptly attended to  
**STATION ROAD, SELSEY, Sussex**  
Telephone No. Selsey 122

Those of you who are acquainted with the Mariner family will know that this is Frederick George Winslade, brother of William Edward Winslade who was the father of Bill Mariner's wife, Ruth. The son is Frederick Sidney who, in turn, had a son named Frederick Ralph who emigrated to Australia.

His son is Frederick Graham.

I can't find a trace of Major and Mrs S F Evans but this Guest House certainly made an impression on Ashley Courtenay, writer of Ashley Courtenay's Hotel Guide, published 1986, who, in The Sphere of 16 January 1954, wrote the following:

*'Perhaps the sunniest corner of Sussex is the Selsey Peninsular and the Witterings. Both these places should suit those who seek restful seclusion rather than shops and shows. In Selsey I suggest the Thatched House Hotel and the Double Barn Guest House.'*

Not content with that, in The Sphere of 12 June 1954 there appeared:

*'I have recently revisited the Selsey Peninsular of Sussex, where there is little to attract the day tripper. The main road ends abruptly on a new sea wall designed to keep the sea to its proper place – high-water mark.*

*I found two small places of delight, though they are likely to be full in the height of the holiday season – the Double Barn, a small hotel of guest house proportions, where Major and Mrs S F Evans lay themselves out to provide a perfect carefree holiday, and the Thatched House, under the personal direction of Captain and Mrs R Foden-Petchler – both delectable spots, with direct access to firm sands and safe sea bathing.'*

Included with the Guide Book was a carbon copy (remember them?) which was a letter from Chichester Rural District Council, sadly without a date.

*'Dear Sir or Madam,*

*In reply to your enquiry, I regret the Council do not possess a register of accommodation, but if you were to communicate with any of the following estate agents they might be able to meet with your requirements...*

*The enclosed copy of the official guide will probably be of use to you.'*

*Yours faithfully  
Leonard Bailey  
Clerk of the Council'*

Included in the letter was a list of some 10 estate agents, including Messrs. Wyatt and Son, High Street, Selsey; Messrs. Bonnar and Bonnar, Hillfield Road, Selsey and W H Phipps, Esq. High Street, Selsey. I'm not at all sure about this last entry. I can't make up my mind whether it's a Phipps I can't find or a typing error and should read F W Phipps. I'm inclined to the latter but if anyone can enlighten me, then please do.

The letter also listed 22 caravan and camping sites in the district including Mr D J Wakeley, Mill Farm, Selsey, Just the one in Selsey!! I must say that came as a bit of a surprise.

**THE RED HOUSE PRIVATE HOTEL**  
URSULA AVENUE - SELSEY - SUSSEX

Three minutes from sands. H and C in all rooms. Interior Sprung Mattresses, Tennis Court, Television. 5 guineas to 6½ guineas (no extras). Write for Brochure or phone SELSEY 236 Proprietors: JACK and EILEEN BARKER

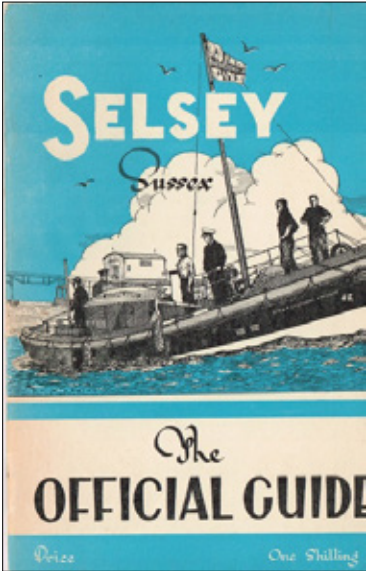
Here is a splendid picture of the Red House Private Hotel (I can't trace Jack and Eileen Barker either) but it does sound inviting. And there's a television.

If you live in the Red House and have the deeds, perhaps you would be willing to let me know when this couple were in residence.

The purpose of all this research is not, as you may suppose, nosiness but an attempt to date the Guide.

And no, I haven't finally flipped, the next Guide was in Mollie Tupper's archives. It looks the same, but the sharp-eyed among you will spot a price of One Shilling.

The blurb is exactly the same but there are many more advertisements from different companies and individuals.



'Caroline's' is there. *'Start the day right by having morning coffee at Caroline's.'* If only we could!

Tel 411 Tel 411

**THE BARN CLUB**  
High St.  
SELSEY

An Elizabethan Double-barn, tastefully modernised and centrally situated. Car Park

THE COCKTAIL BAR

Dancing, Members' Bar and Buffet

A Cordial Welcome Extended to Guests and Visiting Members

For Information apply to the Secretary

Or how about an evening out at *'an Elizabethan double barn tastefully modernised and centrally heated?'*

Who remembers having fried egg sandwiches?

For incomers like me, the Barn Club was behind what is currently a used car business in the High Street.



And by the time you read this issue of Selsey Life, I will be as glamorous as the lady who has been to 'Annette' Ladies & Children's Hairdresser,

The advertisement says they are specialists in Wella Rapid Heat and Devon Cold Wave Systems. Obviously I've led a very sheltered life as I have no idea what these were.

**BROADREEDS**  
*Super Holiday Camp*  
SELSEY ON SEA

ENJOY your Holidays on the Sun - alone, Couple or Chaperone which combine the comforts of a modern hotel with the freedom of an open-air holiday. Solid, brick-built buildings with hot and cold water, electric light and comfortable beds, designed for one, two or three persons. Situated in spacious grounds right beside the sea. The main buildings which, including attractive Dining Hall, Dance Hall, Club Lounges and Soda Fountain are all under one roof. For those who like to combine relaxation with plenty of fun there is Dancing, Tennis, Billiards, Competitions, Beauty Contests and Concerts.

Write for Attractive Brochure to -> THE RECEPTION OFFICE  
**BROADREEDS HOLIDAY CAMP**  
SELSEY-ON-SEA - CHICHESTER - SUSSEX  
Telegrams: Broadreeds, Selsey, Sussex Telephone: Selsey 116

TIMBER AND BUILDERS' MERCHANTS

**H. WILKINSON**  
(Prop. W. L. WILKINSON)  
**HIGH STREET, SELSEY, Sussex**

HOME GROWN TIMBER ALL SIZES  
CORRUGATED IRON - CEMENT - SAND  
GRAVEL  
PROMPT DELIVERY - KEEN PRICES

**THE NEW SEALS ISLE SERIES**  
IN  
POULTRY HOUSES  
GREENHOUSES  
TOOLSHEDS  
FROM  
**W.S.P.B. (SELSEY)**  
**HIGH STREET, SELSEY**  
PHONE 419 ALWAYS OPEN

While most of us recognise the Broadreeds Holiday Camp, later to become Pontins Broadreeds, I wonder how many remember W.S.P.B? Again, I can't find any trace of them.



“Earnscliffe”

Guest House

For Ideal Family Holidays. Central position. 4 mins. Sea. On Bus Route and near shops.

- ★ HOME PRODUCE
- ★ H. and C. ALL ROOMS
- ★ PERSONAL SUPERVISION
- ★ HIGHLY RECOMMENDED
- ★ SEPARATE TABLES

Open all the year round

Resident Proprietors: Mr. & Mrs. C. W. AKERMAN

**HILLFIELD ROAD, SELSEY-ON-SEA**

And here is another conundrum. If the name ‘Earnscliffe’ rings a bell (with or without the ‘e’) it is because I mentioned it back in May in connection with a postcard from 1905. In the earlier guide book we can see that the Guest House was owned by Mr & Mrs C W Akerman. Further research shows that he sold it in 1953. In the later guide book it is still in their possession. By 1954, the Akerman’s are at Kistor (or Kestor) in Seal Road. In the Bognor Observer of 8 October 1954 there is a report of a ‘café break-in’ when two 17-year-olds stole cigarettes and tobacco from the Marine Pavilion Café, Selsey owned by Mr C W Akerman. Mollie thought that her guidebook was from 1958 but she wasn’t sure. Who knows!

An easier trail is perhaps that of Mr Victor Smith and ‘Conifers’.

In 1946, the Chichester Observer of 4 May contained an announcement that ‘Mr Victor Smith, of the Rushmere Guest House, Hillfield Road, Selsey, is acting as correspondent in Selsey for the Observer and will be glad to know of engagements, etc.’ A further announcement on 28 September of that year declared ‘Mr Victor Smith, who writes these topics, has changed his address to ‘The Conifers’, Seal Square, Selsey, where he will be pleased to receive any matters of interest to be published in this column.’ The column was called, perhaps unsurprisingly, Selsey Topics.

In 1948 he lost a leather covered 3-draw telescope on Selsey Shore for which he offered a reward and, in 1949, ‘Lady’s ski-boots, ice skates and ski trousers (bought in Switzerland)’ were for sale. By 1951 he was de-cluttering, offering a ‘Hen Battery: four unit all metal, good condition for £3. 10s’ and in May 1953 he was advertising ‘The Conifers Private Hotel. Modern amenities. Brochure.’

Also, in 1948, there was a three digit telephone number (436). In 1953 it changed to four digits (2436) in line with the central updating of the Selsey Phone numbers. By 1955, however, the telephone number had changed completely to 2019. Did this indicate a change of ownership and /or usage of the property or was it simply to avoid a five-digit number?

And now we come to the third and final guide book which arrived from Cornwall.

**SELSEY BILL, SUSSEX . . .**

**Selected List of Properties and Map**

“Live in Glorious Sussex for Health”

**PHIPPS & TUPPER**  
Established 1903  
Auctioneers, House, Estate & Shipping Agents  
**High St., Selsey Bill**  
Phone 43 ‘Grams: Phipps, Selsey

Sadly the ‘Selected List of Properties’ was not with it. However, this is by far the most interesting guide.

Under the heading ‘Art Appeal’ we see ‘The Rembrandtesque beauty of the Selsey country allures artists, many of whom have come to reside hereabouts’. We have three banks, ‘hireable rowing boats in plenty’, and ‘a very good Cinema with constant changes of programmes’. If you wanted to go coursing, however, you had to go to Aldingbourne. Electric Light was 6<sup>7</sup>/<sub>8</sub>d per unit, Gas was 1.8d per therm or 7/11d per 1,000 cubic feet. The Water Supply was ‘pure and copious’. Rates were 17/- in the £ per annum.

Another splendid heading of ‘Literary Allusions’ tells us that ‘These are many, not the least treasurable being Mr Rudyard Kipling’s poem in which a Selsey marsh ox and an ass are the sole attendants at a Christ Mass in old St. Wilfred’s.’ This, of course, is Eddi’s Service which may be read at St Wilfrid’s Chapel at Church Norton or on-line.

‘Natural Advantages’ – Selsey’s position at the extremity of Selsey Bill, a three-mile natural pier gives it the sea as boundary on two sides. The views are enviable. Selsey’s whole setting is ideal. Its consistent record for sunshine is high, equalling Bognor’s. Selsey Bill overlooks Craigweil House, occupied by His Late Majesty King George V during his convalescence.

I’m particularly drawn to the magnificent self-advertising (not only for the cinema with which the Phipps and Tupper families had the closest of connections): ‘Residential, Furnished and other Property. A complete register of available property is kept by Messrs. Phipps & Tupper, Auctioneers, and Estate, Shipping Agents, High Street, who will readily and gratuitously furnish particulars of houses, etc., conforming to enquirer’s expressed wishes.’

And, here again, we don’t have any dates. I have produced lists of all the advertisers in these three Guide Books so if anyone would like to take a look at them please let me know. I can email them or post copies.

If Mollie is correct about the date of her Guide Book then I suspect the earlier one is circa 1953/4 but if anyone has a copy of the same guidebook with a date, then do please put me out of my misery.

**W. MARINER & SON**

**Boot and Shoe Repairer**

**BEST WORKMANSHIP**

**EAST STREET, SELSEY**

Also at - MILL LANE, OLD POST OFFICE, SIDLESHAM

And just to indulge myself, in Mollie’s guide book is this advert. It is, of course, Bill Mariner, one-time brickfield manager and Hon Sec. of Selsey Football Club (HQ was the Fisherman’s Joy). John didn’t know his grandfather also operated at Mill Lane in Sidlesham so this was a nice piece of family information for us.

The article on the preceding three pages is the intellectual property of the author and may not be copied or used in any way without her written permission.

©Ruth C Mariner  
01243 604698  
[ruthm@ruthcmariner.co.uk](mailto:ruthm@ruthcmariner.co.uk)

Acknowledgements  
Chichester and Bognor Regis Observer.  
David Phillips, [Copydesk.sussex@jpress.co.uk](mailto:Copydesk.sussex@jpress.co.uk)  
[jpimedia.co.uk](http://jpimedia.co.uk)

Jack & Anne Tupper for their permission to use Mollie Tupper’s archives.



### Dog Control Public Spaces Protection Order is adopted for the Chichester District

A review of the rules for dogs in public spaces has been approved for the Chichester District.

The council’s Cabinet approved the Dog Control Public Spaces Protection Order (PSPO) at its meeting on Tuesday 6 October. This means the rules have now been extended for a further three years, with some small amendments.

The changes are designed to address public feedback and take into account the council’s experience in managing land and enforcement issues in relation to the current dog controls.

These amendments include allowing dogs on East Wittering and Bracklesham beaches from May to September — while retaining the dog exclusion zone on **Selsey Beach** during the same period — as long as they are put on a lead if directed to do so and that all dog mess is cleared up straight away.

The rules around dog fouling have also been strengthened to include additional footpaths and cycleways which were not previously covered.

The Dog Control Public Space Protection Order means that it is an offence for the following to take place in specific locations such as parks, playgrounds and public spaces:

- Failing to remove dog mess immediately;
- Not putting on and keeping a dog on a lead when instructed to by an authorised officer; and,
- Allowing a dog to enter an area from which dogs are excluded.

A breach of an order can result in offenders being issued an on-the-spot Fixed Penalty Notice of £100.

Councillor Penny Plant, Cabinet Member for the Environment and Chichester Contract Services at Chichester District Council, says: “We want to make sure that everyone — with or without dogs — can safely enjoy the many beautiful public spaces we have in our district.

“We know that most dog owners are responsible, but unfortunately there are a small number who do not pick up after their dog or allow them to run out of control. Updating the Public Space Protection order for a further three years means that we can tackle these issues, which can negatively affect our communities, our wildlife, and spoil people’s enjoyment of our beaches and open spaces, while at the same time encouraging responsible dog ownership.”

The PSPO can be enforced by environmental protection officers, the council’s Foreshores team and litter enforcement officers from East Hampshire District Council.



**Update from the Chichester Prevention Team**  
**You can contact your local team in the following ways:**

- **Call us:** on **101** to report a crime or **999** if it’s an emergency
- **Email us:** [chichester@sussex.pnn.police.uk](mailto:chichester@sussex.pnn.police.uk)

**In an emergency, or if you see a crime in progress, always call 999**

Police have been very busy and had some great results in Selsey recently.

We have had three successful drugs warrants, with Class A and Class B drugs, large amounts of cash and in one case, a large amount of weapons seized.

Drugs ruin lives – both the user’s and their families - it’s that simple.

If you are aware of drug dealers operating in your area, please contact Sussex Police confidentially on the non-emergency number: 101. We rely on the public as you are our eyes and ears.

A day of action was also held recently in Selsey – with the aim of targeting drink/drug-driving. Police stopped numerous vehicles, interacted with lots of people in Selsey and arrested a man for driving under the influence of drugs and possession with intent to supply cannabis.

Drink and drug-drivers are a danger and menace to society. If you know of anybody who drives while under the influence of drink or drugs then please call 999 if this is happening at the time, or the police non-emergency number 101.

#### Front office opening hours

Monday - Saturday 9am -8pm.  
Chichester Police Station,  
Kingsham Road, Chichester, PO19 8AD

**Seal Island Wools**  
**92 High Street, Selsey**  
**01243-606837**

We are celebrating national yarn shop day on November 14th 9:30am-3pm and invite you to join us.

Free patterns, special offers, and beautiful handmade festive gifts. Thank you for your continued support.  
Home delivery still available.

Find us on Facebook

**For all your local advertising needs contact us at [selseylife@btinternet.com](mailto:selseylife@btinternet.com)**



## DONNA'S DELIBERATIONS

Hello everyone and happy November! I literally have no idea how we have arrived here; time has hurtled by at great speed although I stand by my assertion that we really would be taking 2020 back and asking for a credit note if we could. As I write this things are a little unclear and areas within the UK are having increasing restrictions placed upon them due to you know what - it is indeed a very fragile time. We are incredibly fortunate, down here at the bottom of the long and winding road because our geographical position affords us some natural protection, and our local traders and volunteers have been extremely agile and creative in adapting to what has turned out to be a very dynamic environment. Things are far from perfect but better here than in many other towns.

I will admit I am beginning to grow tired of the Zoom meetings which have become normal these days. The internet seems to

have effectively been transformed from a source of information and entertainment to a vital lifeline practically overnight. Meeting in 'Zoomland' was a bit of a novelty to begin with and honestly, not having to go up to Chichester does have its merits, but I have started to miss the human contact.

Council, particularly, can be a somewhat gladiatorial environment; it would be naive to believe that it is without conflict but, there was something reassuring about being able to share a cup of tea and a biscuit with someone you have vociferously disagreed with a few minutes previously. Relationships are important and have to be worked at to maintain, that's not easy to do through a computer screen, so much is missed. Hopefully, normal service will be resumed sooner or later....

On the subject of Zoom and to take a 'lighter' perspective - a friend of mine sent me a photograph of something which was doing the 'rounds' on Facebook:

'Zoom meetings are basically modern seances, a normal meeting often ends up like this: "Elizabeth, are you there?" "Make a sound if you can hear us!" "Is anyone else with you?" "We can't see you - can you hear us?"

I'd never thought of Zoom in those terms - but it's true! Here's another one:

1-1.05pm - Waiting for the host to start the meeting  
1.06 - The group discovers virtual backgrounds and decides to guess who's using one  
1.07 - Someone struggling with audio  
1.09 - "Let me try my headphones - don't like those earbuds"  
1.10 - Everyone holds up their cats or bunnies or any other available family pet  
1.15 - "Sorry, missed a lot of that,...still can't hear properly... can we reschedule?"  
For anyone who 'Zooms' regularly - this should resonate with you!

Backgrounds are a constant source of amusement. Many of us would rather that our colleagues didn't notice that we live in total chaos, in a house which really needs a redecorate so we experiment a bit; Mr Johnson has a very good one albeit a boring one, he often uses a virtual classroom which is quite apt. I've attended meetings with people who have been on the beach, in the middle of the countryside, in a Disney Castle, in the Simpsons' living room and even Batman's 'Batcave'! (This one



is particularly good because Batman has a practically life size T Rex and a 10 foot poster of The Joker.)

I know, juvenile, but goodness knows we have to take humour wherever it is these days!

I have concluded that Zoom is basically the medium by which we allow people to watch us embarrass ourselves in ways which would not have been thought possible a few months ago. We have found a way to make social interaction uncomfortable, even when no social interaction is actually happening. Waving goodbye (yes, we really do that) then pressing the 'leave meeting' button has to be one of the most socially awkward two seconds in the history of awkward situations. Even worse, though, is when you enter the zoom chat early, with your camera already on and you realise that it's just you and one other person!

There is the odd positive, though - Zoom is free for the first 40 minutes - this has to be the single greatest advance to meeting productivity in the history of meetings.

So, enough about Zoom, I would like to share something with you. Mr J and I celebrated our 20th Wedding Anniversary at the beginning of October - it feels like a lot longer, but there we go. The usual flowers arrived and we did have a lovely meal out with the family but, little did I know there was something else happening....

Picture the scene - normally Mr J and I try to have a bit of R and R time on a Sunday afternoon so tend to take ourselves off for a cup of tea and a piece of cake somewhere. This particular Sunday though, Tim said that he had a 'delivery' arriving so we couldn't disappear when we usually do. My reaction was to tut tut a bit and tell him that I was fed up with bits of technology arriving or, even worse, leads which plug into bits of technology. So, 1pm arrived and Tim called me downstairs. As I reached the door I noticed the faint waft of music coming from outside and assumed that someone had the car radio on - little did I know.....I opened the door and who



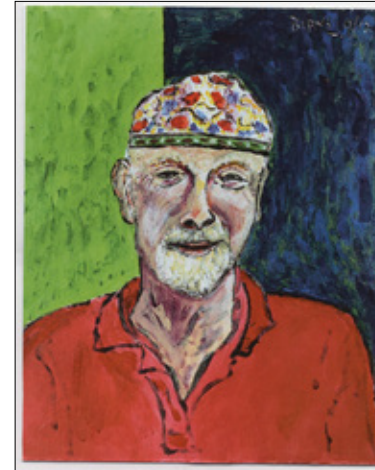
should be there? Only Jonathan Ansell, G4's 'front man! (The 'blond' one!) So, there I was, standing in my driveway, being serenaded by Jon singing Nessun Dorma. He has quite a powerful voice has Jon, so a fair bit of Selsey probably heard him as well! He had very kindly managed a quick visit to Selsey before seeing his family and giving a very socially distanced concert in Bognor. It was truly incredible and something I will never forget!

So, in closing - and I hate to mention this - I'd like to wish you all the best of luck with your Christmas shopping. My regular two readers will know that I am always unprepared and end up hurtling around on Christmas eve, trying to do something I should have finished at least a week or two before. Despite my best intentions, nothing ever changes.

Take care all. Keep safe.

Donna [donnajohnson279@gmail.com](mailto:donnajohnson279@gmail.com)

## MAX BIRNE PAINTER 1927 - 2020



My friend and neighbour Max Birne died on 28 September, aged 93. He was born in Islington on 12 January, 1927 to Sophie [ nee Shreiber ] and Joseph Birne.

The family moved to flats in Stamford Hill, where Max and younger brother Stanley went to school. To many families of that era libraries, museums and art galleries were an unknown world. Max spoke of his dislike for the layout of the flat where he had to walk through bedrooms to reach the lounge and in his later life of paintings there is always a sense of space in his pictorial compositions.

At the outbreak of war Max and Stanley were evacuated to the Fens. These were blissfully happy days. Towards the tail end of the war Max was conscripted into the army where he served in the Film Unit, based in Naples. He was demobbed in Chichester, returning to civilian life and work. He became a stone setter in Hatton Garden, then followed in his father's footsteps, to Fleet Street and a secure job on the printing presses. Through his fiancée, Rosie, he began to recognise a need to know about art. Evening classes at John Cass College introduced him to painting, colour and form.

In 1957 he married Rose Marie Kessleman [ d 2005 ] at Dollis Hill Synagogue. They moved to Wembley, where Max joined The Wembley Art Society. It's then president Ken Howard became an important influence to Max. Along with Rosie he developed a love for antiques, opening up shop-lets in Portobello Road, then Alfies Antique Emporium.

After Rosie's death Max decided to make a new life for himself in Selsey, West Sussex where he had good friends. The seashore supplied Max with endless inspiration, along with trips to Venice and the Cote d'Azur. The domes and canals of Venice elided with the old lifeboat pier in Selsey as subject matter. The light in his conservatory/studio, which overlooked his beloved "culturally distressed" garden, reminded him of the Mediterranean. This wild patch of palm trees and tumbleweed was a haven, and setting for many paintings and lively conversations with his many Selsey friends. Max often said 'I have never been happier in my life than in Selsey'

In his last years Macular Degeneration plagued his eyesight, and he was registered blind. But he never stopped thinking about his next picture and painted till the end. An exhibition celebrating his Art is planned for 2021.

Max is survived by his son Mitch, niece Rosalind and nephew David.

Professor Pamela Howard OBE  
2 Park Lane  
Selsey PO20 0HD

## George Woodland 21/10/1934-20/10/2020



I am sure many of you will have now heard the news that George died suddenly, early on 20th October.

One of Selsey's oldest and most cherished characters, George was loved by all that knew him.

George was the eldest of seven children born to Eric and Violet Woodland. He spent much of his time as a child down the beach with his father fishing so it was inevitable that he too would follow in his father's footsteps.

George had to take some time away from this to do his National Service but that was the only time. He had a real passion for fishing and the sea.

He also joined the crew of the Selsey Lifeboat and eventually became assistant mechanic. In years to follow he was made up to second coxswain.

Married to Janet he was father to three children Heather, Hazel and Sonia.

He will be greatly missed by all the family and those who had the pleasure of knowing him.

Rest peacefully on calm seas Uncle George. Much love x



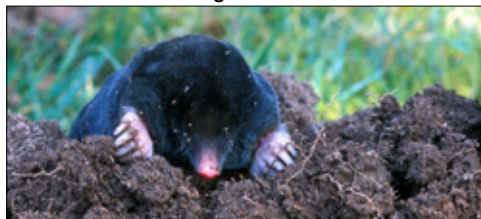
13) What is Miss Marple's first name?  
14) Which American Civil War general wrote Ben-Hur?  
15) What is Baroness Karen Blixen's pen name?  
16) Uncas was the last of the what?  
17) How many days will the year 2100AD contain?  
18) Whic Kim co-starred in the film Seance on a Wet Afternoon?



## Mole by Michael Blencowe of the Sussex Wildlife Trust

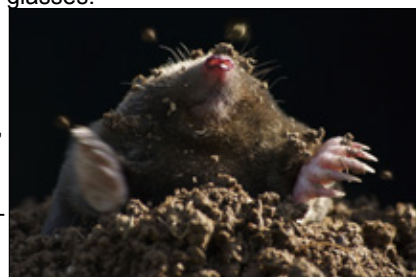
If your lawn is full of nectar-rich flowers for butterflies and bees, with a patch of long grass for grasshoppers and hedgehogs, then Mother Nature will thank you. But if you're one of those particular people who demands that their lawn is a perfectly manicured carpet, slathered in chemicals and shamelessly shaved each summer Sunday, then Mother Nature will not be happy and she'll send in her best hit man. So while we remember, remember Guy Fawkes in November, I'm here to celebrate Britain's other infamous tunnelling terrorist – the mole.

It's hard to bond with the mole. Like 99.9% of us, I've never seen one and probably never will. They're almost a supernatural entity – the Bigfoot of the back garden. Their invisibility means my mental image of the mole has been painted by The Wind in the Willows and children's cartoons instead of real-life encounters. I'm always surprised when I see an actual photo of one and it's not wearing glasses.



Mole c Ray Armstrong  
Sussex Wildlife Trust

Moles aren't blind. Admittedly, they'll be struggling by the second line of an eye test but there isn't much call for perfect eyesight when you spend all your life in total darkness. Instead, their pink nose is covered with 5,000 sensory organs which register touch and vibration, allowing the mole to 'see' with its snout; a super-sense that makes them efficient hunters. Their tunnel network spreads out like an underground web and when a wiggling worm drops into it the mole's super-senses tingle, sending them scrambling through



Mole c Alan Price  
Sussex Wildlife Trust

Sussex Wildlife Trust is an independent charity caring for wildlife and habitats throughout Sussex. Founded in 1961, we have worked with local people for over half a century to make Sussex richer in wildlife.

We rely on the support of our members to help protect our rich natural heritage. Please consider supporting our work. As a member you will be invited to join Michael Blencowe on our regular wildlife walks and also enjoy free events, discounts on wildlife courses, Wildlife magazine and our Sussex guide book, Discovering Wildlife. It's easy to join online at [sussexwildlifetrust.org.uk/join](https://www.sussexwildlifetrust.org.uk/join)

- 19) Who wrote the song "I say a little prayer for you"?
- 20) What nationality was jockey Scobie Breasley?
- 21) Which Nazi leader flew to Britain in 1941?
- 22) Who directed the film Halloween?
- 23) What do the initials FLAG stand for?
- 24) What is the name of the knife carried by the Gurkha soldiers?
- 25) Who was the child with the magic talking piano?

## Care Home ~ Home Care



### Sussex Grange

Luxury Residential Care Home  
&  
Personal Home Care



#### DAY CARE:

Warm & friendly welcome  
Available 7 days / week  
Flexible timing

For more information  
call:

**01243 60 62 62**

#### RESIDENTIAL CARE HOME:

- Close to shops and seafront
- Carers on duty 24 hrs / day
- Delicious home-cooking
- All bedrooms en-suite
- Large private gardens

14 Vincent Road, Selsey

#### PERSONAL HOME CARE:

- The help you need, when you need it, in the comfort of your own home
- We can help with personal care, medication, cleaning, shopping, etc

[www.sussexgrange.co.uk](http://www.sussexgrange.co.uk)

## Coming in from the cold

With winter looming we see an influx of birds to our shores as they leave their freezing breeding grounds and seek milder climes that can still provide food and shelter from the worst weather. Britain's estuaries and lakes are a magnet for migrating wildfowl and waders and RSPB Pagham & Medmery reserves are no exception.

The rich mud exposed at low tide is full of crustaceans, shellfish and other invertebrates – a massive mud pie packed with protein and nutrients. Examine the waders more closely and you will notice how each species is adapted to specialise targeting different prey. The diminutive dunlin for example has short legs and therefore spends its time picking around the water edges. Longer legged species, such as avocet and black-tailed godwit, wade out further into the water to feed.

Then look at the bills. Again the dunlin's bill is quite short, but an excellent tool for picking prey off the surface.



Curlew c Andy Hay



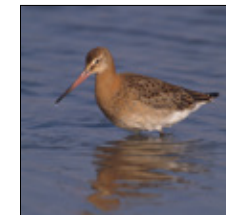
Pintail c Ben Hall

The godwits longer bill and perfect for delving deeper into the mud, while the extraordinary long, down-curved bill of the curlew, allows it to probe deeper still.

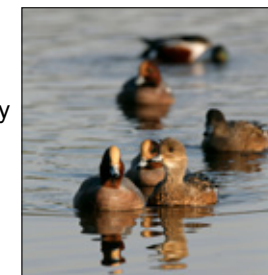
Then there are the ducks. Dabbling ducks, such as wigeon and pintail, feed by up-ending, their heads underwater and their bottoms in the air. Meanwhile, diving ducks, like the tufted duck and goldeneye, obviously dive for their food in deeper water.



Dunlin c Andy Hay



Black tailed Godwit  
c Chris Gomersall



Wigeon c Andy Hay

For many locals and birdwatchers alike, there is one species that is especially welcome back at this time of year. The brent goose. The smallest of our geese, it is similar in size to a mallard duck, dark, plump, and with a small

white neck patch and white undertail. There are actually two distinct races of brent geese. Pale-bellied brents breed mostly in Canada and Greenland and spend the winter predominantly in Ireland. Dark-bellied brents breed in northern Russia and winter in southern and eastern England. It is these dark bellied brent geese that we see across our reserves, although you may very occasionally find a pale bellied brent hidden among them. They feed in flocks sometimes on the water upending like ducks to reach vegetation beneath the surface, sometimes grazing in the surrounding fields. The constant low hubbub of their honking always brings a smile to my face and is one of my favourite sounds during these harsher months.

So wrap up warm, wander the many footpaths across our reserves and observe the different groups of birds making the most of their ecological niche



Tufted Duck c Ben Andrew



Goldeneye c Ben Hall



Brent Geese



Dark Bellied Brent geese

## Let's give nature a home

[www.rspb.org.uk](http://www.rspb.org.uk)









**CHARITY  
CHRISTMAS CARDS  
2020**

With so many Christmas markets unable to take place at this time and to continue to connect with our friends and loved ones. Please support The Sussex Snowdrop Trust by purchasing Christmas cards directly from us. Packets of 10 cards from £3.50

You can pop in and see us at 3 William Booker Yard to select your cards or call us on 01243 572433 and we can deliver to your home.

Cards also available from  
**Sandy Lewis' JIGSAW LIBRARY**  
CALL HER ON 01243 605942 to make an appointment











### JIGSAW PUZZLE LIBRARY

*Do you like doing Jigsaws?  
Would you like to be able to borrow rather than buy?*

*Please call 605942 to make an appointment to collect the puzzles.*

14 Green Lane, Selsey

We are practising self-distancing rules.

The Membership Fee is just £5 and puzzles can be borrowed for a £1 a month each. Over 300 to choose from.

More information on 605942.

**All proceeds in aid of The Sussex Snowdrop Trust (charity no. 1096622)**





As Amanda was stuck in America during the last lockdown, we thought we would do this for the new lockdown. Hope you like it.

## 50 STATES OF USA

Words go left, right, up, down, not diagonally, and can bend at a right angle. Every letter is used only once.

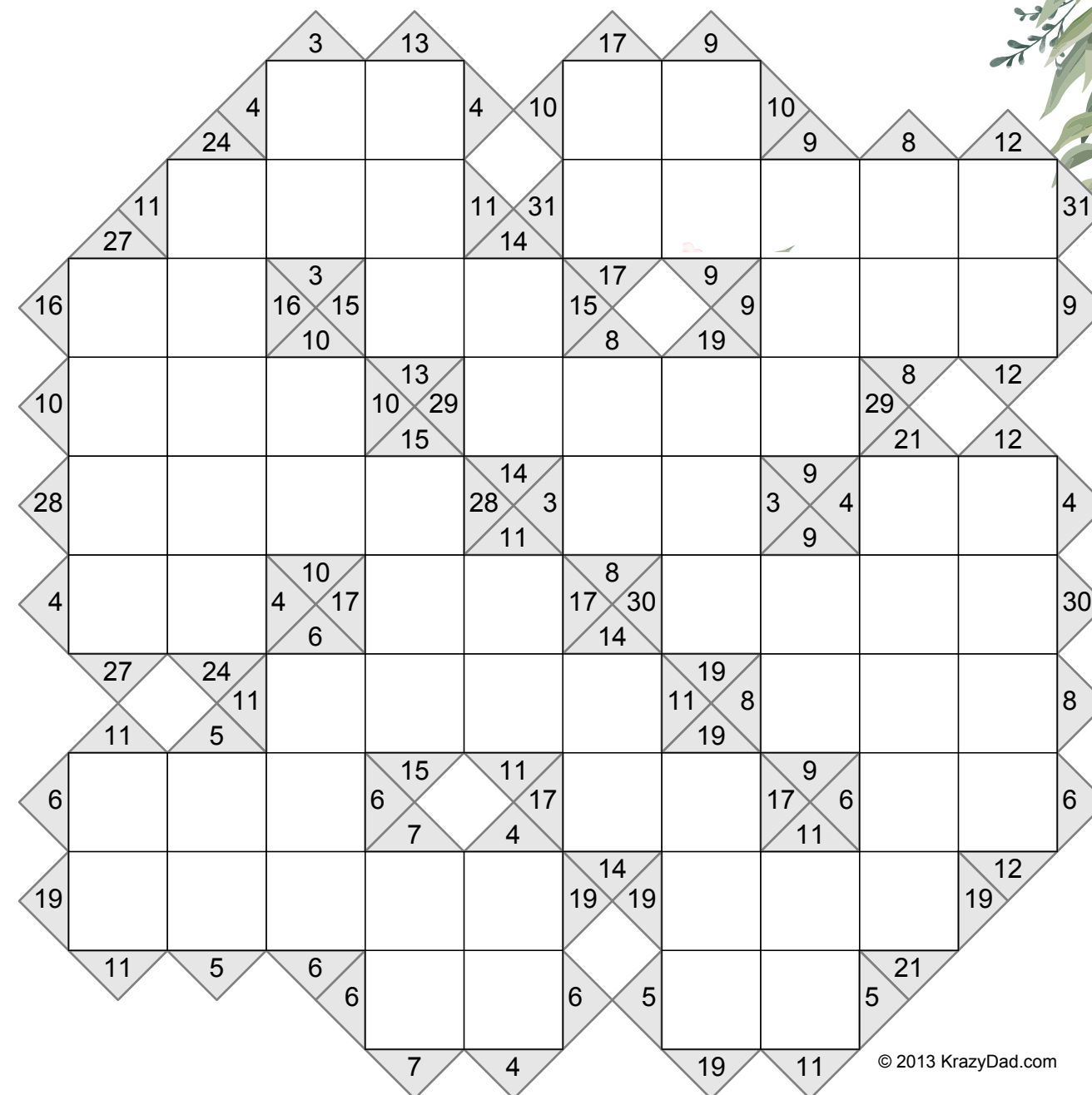
A I N V I R  
R M N A N G  
I Z E S O T A H A W N E W M O T F K E I  
N O C O N N E C I A O R E E C E L S B N  
O N T T U C I T D I N O G X I N O A R I  
R A E X A S O H A I E E S S E N R A G A  
T N A O K L A C O L O N C S I W I D E A  
H E D A M O H O D A R E O N S I N L O I  
C V A N E W H A E I Y W O H A N A O R G  
A R O L I N A M R N O R K I I S I U M I  
P E N N S Y L P I D N A M O F I L A C S  
Y W A I N A V S H I A I A T O R N I A S  
O M I N G S I P P I E N V N S N I R U O  
M I S S I S N M N M D A E O O O A H I M  
S A S N A K E I A A N N R M U R T A O O  
M Y K R E J W C G R A I L O T T O T W N  
A K E S R R A H I Y L A A R H H K U A T  
S C N E H K A N S A S L K A C D A A N A  
S U T Y O D E D E L A A S I L L I N O A  
A N G T O N I E R A W A W E S T V I I T  
C I H S A W S L A N D L A I N I G R S O  
H U S E T T S A M A B A S O U T H D A K

Find all the words from the word list (ignore spaces and dashes, if any):

ALABAMA	HAWAII	MASSACHUSETTS	NEW MEXICO	SOUTH DAKOTA
ALASKA	IDAHO	MICHIGAN	NEW YORK	TENNESSEE
ARIZONA	ILLINOIS	MINNESOTA	NORTH CAROLINA	TEXAS
ARKANSAS	INDIANA	MISSISSIPPI	NORTH DAKOTA	UTAH
CALIFORNIA	IOWA	MISSOURI	OHIO	VERMONT
COLORADO	KANSAS	MONTANA	OKLAHOMA	VIRGINIA
CONNECTICUT	KENTUCKY	NEBRASKA	OREGON	WASHINGTON
DELAWARE	LOUISIANA	NEVADA	PENNSYLVANIA	WEST VIRGINIA
FLORIDA	MAINE	NEW HAMPSHIRE	RHODE ISLAND	WISCONSIN
GEORGIA	MARYLAND	NEW JERSEY	SOUTH CAROLINA	WYOMING

## Kakuro #2

10x10 Kakuro Puzzles by KrazyDad, Volume 6, Book 17



Kakuro puzzles are like a cross between a crossword and a Sudoku puzzle. Instead of letters, each block contains the digits 1 through 9. The same digit will never repeat within a word. If you add the digits in a word, the sum will be the number shown in the clue. Clues are shown on the left and right sides of "across" words, and on the top and bottom sides of "down" words.

Need some help? visit [krazydad.com/kakuro](http://krazydad.com/kakuro)

 **krazydad**  
free puzzles and mazes

*If God had intended Men to Smoke, He would have put Chimneys in their Heads.*





Throughout lockdown and since lockdown we have been able to provide an extensive service and support to the community.

The range of enquiries and the level of need is complex and varied. We have needed to ensure that we can meet that level of need and the partnership working with other agencies has ensured that we can signpost effectively. Referrals to our services have increased from residents, families, healthcare professionals, WSCC adult social care, other voluntary sector groups and Selsey Town Council.

Many of our activities have commenced again albeit in smaller numbers. Bringing people together has led to many grateful calls from our carers and cared for. Our staff and volunteers have worked hard to plan, risk assess, prepare, and deliver: **Movies for Memories (with a lovely lunch) Shop Talk, Befriending services, Wellbeing Support Sessions, Stroke Club, Return to Sunday School Services, Buddy Peer Support Sessions and The Lending Library.**

Our Forum members have also been planning and delivering their activities during this time. They have included live streaming and virtual church services, harvest celebrations, art groups, gardening and woodworking projects, delivery of food parcels, opportunities to share safe places to reflect, refresh and reboot spiritually and emotionally.

As we quickly approach Christmas, planning is taking place to ensure that those who have benefited from the community lunch over the years can continue to do so this year. A different format than before, but the same significant planning is taking place to ensure that people living at home can enjoy the celebrations. Donations from businesses and individuals will ensure that residents of Selsey will receive gifts and hampers of food. No one need go hungry this Christmas. A reminder of the details at the end of this article.

Our thanks go to all who support the charity to enable us to do this. We have an exciting advent calendar going up in the **Selsey Care Shop** which will give people a chance to win some exciting prizes. This will include a helicopter ride donated by a member of the Selsey Business Network. We will also be providing a space for the Christmas Letters to Santa Letterbox on behalf of the Lions.

We know that this has been an extraordinary year, but what has come out of it is the level of compassion and understanding from our residents. The need to wear masks when out and about has led to some tricky situations a misunderstandings.



This can also be the case when a driver parks in a designated disabled bay or on double yellow lines. Or a person who may need to use the public convenience quickly. So, it is important to be reminded that some of residents, neighbours, family members may have some hidden disabilities. This has prevented them from being able to wear a mask. For example, those with which have respiratory problems COPD, depression/anxiety, PTSD, needed additional. It is important not to assume something because you can't see it. There are other medical conditions that also require additional understanding for example epilepsy, diabetes,

chronic fatigue syndrome, cystic fibrosis, hearing or vision impairments, digestive, bladder and bowel problems.

Some people with a cognitive impairment, brain injury, or dementia may forget to put on their mask or perhaps forget to give you space. It is no good getting angry and frustrated with that person. Give them time and give them space. Speak clearly, slowly, and respectfully. Struggling to be able to articulate what they need will be equally frustrating to them and this will be impacted by additional stresses.

A person with a learning disability, ADHD or on the autistic spectrum may not read body language or communicate in the same way. Interaction communication and understanding social norms can be a challenge for many. A person on the autistic spectrum can easily misinterpret subtle communications, body language or innuendos. They may not be able to respect your need for personal space, so a polite reminder may be required. You may need to communicate effectively to ensure you are including them in a situation. Information can be found on any of these health needs on the NHS website: <https://www.nhs.uk/conditions/>

Whatever the situation, whatever the condition, it is important to be kind. Small changes – BIG impact!

For more information pop into the Selsey Care Shop Monday to Friday 9-4, Saturday 9-1, or call: **01243 201616**

In the meantime, do not forget the Christmas Community Lunch and the plan still is to deliver a Christmas lunch and pudding directly to your home with the kind help of one of our buddies or volunteers. Don't forget, if you are going to be alone or do not feel you can cook your own Christmas lunch this year, please give us a call. We will also be looking for donations for gifts to those receiving the lunches and have set up collection points for these in the town.

In addition to this the Selsey Community Forum are providing hampers and gifts to families who are in challenging financial situations. Any donations will be most welcome. Our thanks to those businesses or individuals who have already offered their support in time or money.

## Selsey Community Forum

Registered Charity 1156460

Telephone: **01243 201616**

Email: **mail@selseycommunityforum.uk**

Website: **www.selseycommunityforum.uk**

Address: **Selsey Care Shop, 121 High Street, Selsey, PO20 0QB**

## STOP PRESS

Given the Government announcement of a further lockdown from 5<sup>th</sup> November, we have had to suspend most of our organised external activities for the rest of this month that many of you have been able to participate in. We are sorry, as we are aware how you value these opportunities to get out and mix with others. Like you, we do hope that we will be able to bring them back in December.

Just a reminder that we have in place our fantastic group of **Buddies** who will help you as in the earlier lockdown. Please contact them direct, or else ring us at the Care Shop on **01243 201616**, which will be remaining open.



## Warrant Officer Aleks Chudek DFM

Some of you may remember a number of articles I wrote to Selsey Life on UK National Service and lastly about D Day remembered. In my last was the story of Warrant Officer Aleks Chudek DFM who died during Spitfire operations over France on the 23<sup>rd</sup> June 1944. Those interested will find his story in September 2019 issue. ([www.selseylife.weebly.com/back-issues-Ed](http://www.selseylife.weebly.com/back-issues-Ed).)



On returning to UK after a recent holiday I heard that his son Rysh, who lives in Selsey with his wife Anne, had been presented on 80<sup>th</sup> anniversary of the Battle of Britain with a painting of his Father's Spitfire. Painted by local man and friend Steve Smith it was presented to him in the Selsey Club in the presence of proprietors Danny and Julie. Attached to the painting are facsimiles of Aleks's medal awards – a wonderful memory.



Steve also added this dedication to the Spitfire portrait which as Rysh wishes it to be viewed is hung in the Selsey Club in perpetuity: ***This painting is dedicated to the memory of Spitfire pilot W/O Aleksander Chudek. Fighter ace from both 315 and the famous 303 Squadron based at RAF Northolt. Credited (after much searching through RAF records) with no less than 11 kills confirmed with a further 8 declared damaged/possible downed. Decorated and awarded: D.F.M. Polish Cross of Honour (4 times) and the Polish 'Vertuti Militari Cross' the equivalent of our VC. The ID number on the rear of the fuselage: AB 892 was one of the seven that was issued while serving at RAF Northolt. So proves his role as Spitfire transfer pilot. Flying the very Spitfire depicted here.***

All in all a lovely story and well done to all those mentioned above who helped along the way.



## Finally

I have had no further stories of Service memories sent to me, in fact sad to say that a number whose story I have written have since 'passed over the bar' and are no longer with us. They are sorely missed, I will change the theme of my writings to include past memories of not only Armed Service but all the civilian services such as Merchant Navy, Police, Fire, National Health etc. If anyone local to the Manhood area knows they have a good story, hopefully with photos, please either get in touch with me via Selsey Life or email me at [edwardclamp@hotmail.com](mailto:edwardclamp@hotmail.com). Eddie Clamp MBE

## From Time to Time

PUBLIC FOOTPATH the signpost reads, try keeping me away!  
Along a rarely trodden track to where, it doesn't say  
A lowish fitful sun shines weak through briskly budding trees  
Where lightly stirs a bluebell carpet stroked by April's breeze  
Crisp leaves from winter undisturbed compacting sharp of sound  
Pierce loud a screaming silence that does powerfully abound  
Not one birdsong do I observe above the soundless din

Creating some foreboding this foxed onlooker within  
Although I know I've never been, I've seen this place before  
A picture in a book perhaps.... or maybe something more?

Though fully wound the hands upon my watch do not advance  
A fact that only serves my puzzled intrigue to enhance  
Faintly ringing on the breeze from somewhere in the distance  
A callbox beckons anyone, undying in persistence  
Its whereabouts a mystery for nothing can I see  
Could the dialler and the dialled really both be me?  
Then suddenly the woodland edge, where stands a wall of brick



Contained within forevermore? This has to be a trick  
I loudly call to people there but cannot make them hear  
My soundless voice just isn't heard, rendered weak with fear

How to extricate oneself from such a situation  
PUBLIC FOOTPATH the sign had said so why this aberration?  
Across blue sky flies wispy cloud at disconcerting speed  
One spiky hedgerow briefly flowers then

promptly turns to seed  
Summer morphs to autumn in the blinking of an eye  
With me completely at a loss to grasp the reason why  
I try those footsteps to retrace in order to explain  
But never chance upon that path, that mystery path again

THEN.... woken by a passing shower from such a vivid slumber  
To find that time has leapt some hours.... my schedule to encumber!

JOHN BYRNE APRIL 2016  
ARTWORK: JASON BETON



*The Breath*  
*It may be that when we no longer know what to do*  
*we have come to our real work,*  
*and that when we no longer know which way to go*  
*we have come to our real journey.*  
*The mind that is not baffled is not employed.*  
*The impeded stream is the one that sings.*  
 By Wendell Berry



I love this poem and find it's a good one for the baffling times we face right now. For me (and there are, no doubt, many like me) this time has created an internal shift and given me the courage and impetus I needed to step into a new life. For the past eighteen years I've worked in the travel industry and of course, right now, that's not a great place to be. Demand aside, it's also been a growing issue for me, supporting an industry that works to contribute to Climate Change, rather than make a positive impact. Don't get me wrong, I love a holiday as much as the next person, but we need to start to change the way we travel and drop all the multitude of trips and perhaps go back to the way we once did – planning and looking forward to one big trip a year where we spend perhaps two weeks or more away, rather than the several shorter trips we've been accustomed to taking these past ten or so years.

I've extolled the virtues of the breath for many years now. It began when I started a yoga practice about 20 years ago. Practicing it on a regular basis has come and gone, but there's always been a belief that learning how to breath better is really good for me – really good for us all. And so, I've taken the plunge and am now embarking on a 6-month long teacher training course to be a breath coach, mostly because I believe that most of us have become disconnected to our bodies and let our minds run the show. Breath practices help you reconnect intimately to your body. In doing some research and at the same time, being asked to write this month's Selsey Life article, I thought I'd share some of the findings in the hope it will inspire you to explore the depths of your breath, too. Here goes:

- Yoga was not always the series of postures you see now, but actually a breath practice holding one pose and breathing into areas of the body to open it up. It's only in the last 100 years that modern yoga has begun incorporating postures into the practice.
- There are literally hundreds of different types of breathing practices. In yogic tradition alone, there are over 400! Most yogic breathing is about breath retention and control. You may have heard of Wim Hof's method for example (if not, I urge you to check him out, he's fantastic!) is exactly that, a Pranayama 'breath control' method.
- There are breath methods to enable your body to relax and others to heighten your state, or 'stress' your body - both are hugely beneficial for you. The idea that stressing your body is good for you may seem surprising, but it works in a similar way that 'stressing' your body does during sea swimming or a cold shower (known as cold-water immersion). Positive stressors, or 'eustress',

is actually good for your body. Eustress is a product of the nerves, and can emerge from experiencing exciting things, such as receiving a promotion at work, starting a new job, or taking a vacation. Eustress generates feelings of excitement, wellbeing, and satisfaction. Furthermore, when you challenge yourself, eustress makes you feel confident and motivated. For that matter, bringing about positive stress is one more

reason to keep challenging yourself, which is also hugely important. Use it or lose it as the saying goes!

- Breathing better helps with so many different ailments. It can help hugely with anxiety, depression, lowering blood pressure, boosting the auto immune system, improving circulation. You name it, most types of Breathwork will help in a variety of positive ways.

The stress of modern life, with its busyness, negative media bombardment and always-on culture, overloads our systems to the point where most of us live with low (and often high) levels of anxiety as 'normal'. Believing that how we breathe doesn't matter to our wellbeing and to our lives is no longer something any of us can afford to do. How we breath affects every single system in the body, deeply on a cellular level. If you're new to this phenomenon and not convinced by ancient wisdom, modern science is beginning to catch up and there's now plenty of scientific data to support this.

Learning to breathe more effectively will positively affect your mind, your emotions, your thoughts, your physiology - even down to improving the density of your bones. It will increase your energy, your circulation, help you sleep better, help you feel calmer and reduce your anxiety. I know this because I've experienced it for myself. I know it because it's improved my life in so many ways. I've also come to realise that breathing is an often-untapped potential that can transform every aspect of our lives. And when you feel better you live better. If you're still skeptical try seeing the results 'for real'. Try taking your blood pressure for a week and see how it changes, whilst you take up a breath practice. There are lots to try online you can try for free.

Each person walks their own path and must make choices that feel right for them. But if what you've read here today calls to you then why not give it a go, you've got nothing at all to lose. I'm also in my training phase and need 20 people to practice on! So, if you're up for it, let me know and we can easily set up a free session online in these times of Covid.

Justine Clement runs the community venture Selsey Sea Bathing Society. They have a socially distanced gathering each month which is free and open to anyone who'd like to go along. For more details go to [www.selseyseabathingsociety.com](http://www.selseyseabathingsociety.com). If you want to get in touch with her, you can find her at [justine@selseyseabathingsociety.com](mailto:justine@selseyseabathingsociety.com)



## The Write Zone with Tara Wright



I was reviewing the topics I've been blathering about over the past year, and reflecting on it being October already. The end of the strange Annus Horribilis that is 2020, more social science-fiction than we could ever have imagined is almost over, but the problems we face socially, economically, physically and mentally abound. The wear and tear is starting to show. Siege fatigue is setting in. This time last year, I shared a comedic Bonfire night terror from my childhood. This year presents an opportunity for a different kind of tone.

I think I've observed before that this is the time of year when most of us are starting to wind the year down; starting to prepare for the culmination of the year's doings and celebrate Christmas. I am, as usual, doing my best to ignore the Christmas goodies in the shops. They're a sore reminder of how behind I am. Not only that, I'm feeling an encroaching reticence to buy food for a full-scale Christmas get-together when family members might be locked down and only be able to sample my turkey and roasties via Zoom. Maybe right now someone is inventing an App called Scratch n' Sniff Party or something equally improbable. I'm writing this on the eve of London and Essex entering tighter restrictions. My mother has started stock-piling again. By the time you read this, stricter provisions for social distancing might be in force in Selsey. We are left to surmise.

Speaking of which, I'm probably going to be in a new house by Christmas. I say probably because moving house is just one big guessing game with a huge dollop of hope for the best. I'm superstitious enough not to count my chickens. This is another reason for not buying ahead. My Christmas Day may well be a couple of easy-heat turkey dinners and a potted plant with a bauble on it surrounded by boxes and bubble wrap. The graceful lady of a house I've occupied for the past eight years will pass to the care of a lovely couple who fell in love with it at first sight, and the house that has intrigued me ever since moving to Selsey came on to the market at exactly the same time. I couldn't resist the opportunity to view it. Determined to be objective and impartial I was shown around by the estate agent and after coolly weighing up the pros and cons made a full asking-price offer within thirty minutes of viewing the property. To say I'm excited about the fresh start would be something of an understatement. My daughter is fizzing with

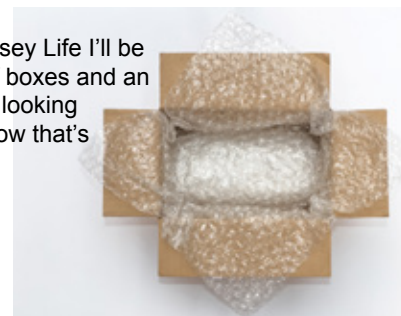
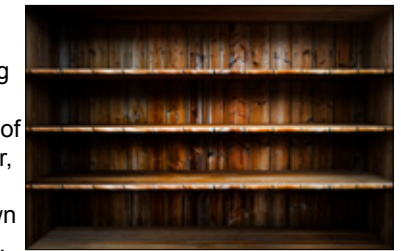
excitement. She gets a space that she can transform into a studio so she can continue to carve out her career as a singer-songwriter.

The sad side of moving house is cutting the emotional ties. I found quite quickly after moving to Quarteracre eight years ago that people seemed to know the place, as if it was a local personality in it's own right. Built in 1932, Quarteracre has been a bolt-hole, a source of comfort and a place for creativity. I have loved it's curves and quirks; loved it's peaceful vibe, it's secretive, woodland garden. I have often wondered what it looked like when it was brand new, set in its quarter acre of land, surrounded by horse meadows that led to the sea. I have imagined war-time in Selsey, visualised the determination to dig vegetable patches, sacrificing the lawn in favour of self-sufficiency. I have wandered the gardens and enjoyed every little bit of perfection and imperfection in turn. Even now, curious passers-by stop to peer at the house through the arch cut in its dense shrubbery. Inside tells a different story. Quarteracre's interior is being debrided, stripped of the bits that made a life here. Shelves are empty, ornaments gone, either rolled up in chip-shop paper or sold. The closing down of the summer, the packing away of another year, of preparing to bring it all together, to celebrate what has been, is reflected all around me in brown cardboard and packaging tape. All my tomorrows are in my imagination, and imagination is the place where hope and fear, wages its invisible war inside all of us. I am in a place in my professional and personal life when I could be going to pieces dealing with the endless up and down of uncertainty, but I've chosen to be the eye of the storm. I've re-labelled whatever I do as an 'investment activity.' Taking worn-out goods to the dump takes me closer to my future. Helping friends is investing in relationships that will last a life-time. Reading a book that helps me grow as a person, or inspires me to write even better is investment in me. My professional 9 to 5 is my ticket to greater success and security so work is not a daily grind to be wished away: it is an investment activity.

The next time I write for Selsey Life I'll be doing it amidst the chaos of boxes and an inability to find anything I'm looking for. I'm looking forward to how that's going to feel.

Stay safe everyone,

*Tara*



[The Yum Yum Bazaar on Amazon.com](https://www.amazon.com). Five amazing tales of love, fate and second chances.

**Handy Larry Selsey Services**  
 Professional, reliable handy-men available.  
 No job too small.  
 Flooring, Painting, Bathrooms, Gardening, Fencing, Shelving  
 All jobs considered.  
 check out our page on facebook at [Handy-Larry@manlywork](mailto:Handy-Larry@manlywork)  
 or call us on 07380 165744

**I was raised as an only child.**  
**That really upset my sister.**  
**When I was younger I felt like a man trapped inside a woman's body.**  
**Then I was born.**

**J.W Smith**  
**CHIMNEY & LOG BURNER SWEEP**  
**07769211143**  
**SERVING**  
**W.Sussex & Hampshire**

**DansCartoons.com**

"My doctor gave me a pacemaker."

**TERRY & IRELAND<sup>Ltd</sup>**  
**Plumbing and Heating Engineers**  
**Installations & Repairs**  
**Ceramic floor and wall tiling**  
**Complete bathroom installations**  
**Disabled / wet rooms / tiling and all small jobs**  
**46 High Street Selsey**  
**01243 602827 / 0783 670 0863**  
 Est 1962  
 Free Estimates



The Golf Course is playing exceedingly well and the greens are in top condition, making the course an absolute delight to play and the Selsey golfers have been taking full advantage playing early in the mornings and throughout the day despite the wet and windy weather of late.

The Ladies Section have been able to play all their Cup and Trophy competitions and have just the three Christmas Competitions left to play.

Alison Weller this year's Lady Captain has worked very very hard to achieve this result and all the Ladies are very grateful to her and showed their appreciation by presenting her with flowers on 3rd October when the Ladies enjoyed her Captains tea party, held in the Club house, socially distancing of course. The ladies were provided with a very 'posh' tea by the catering staff which was both a surprise and delicious. The ladies thought the tea would consist of a sandwich and a piece of cake and did not expect such a treat as the tea that was provided.

On 14th September the Bronze and Rabbits competition was played. This is actually two separate competitions the Bronze Trophy being ladies with handicaps of 32 and under and the winner was Caroline Newton with a nett score of 73. Trudy Hynes was the runner-up with a nett score of 78. Trudy also had the lowest gross score of 104. The Rabbits Trophy is for ladies with handicaps of 33 and above and this was won by Sheila Watmore with a nett 74 and Alison Weller was the runner-up with a gross score of 75. Alison also had the lowest gross score of 114 narrowly beating Carol Wheeler on count-back who had the same score.

On 28th September the ladies played the Elizabeth Perkins Medal. This was won by Anne Croxford with a nett score of 70 and the runner-up was Carol Wheeler with a nett score of 71. Gill Hill had the lowest gross score of 97. Gillian plays off a handicap of 19.

Following a very windy and wet weekend the final Cup competition was played this was the McGlasham Medal. This is a very special competition as to play in this, a lady has to have won or come second in any of the Cup and Trophy competitions throughout the year. This year the winner of the McGlasham cup is Gill Hill who finished the round with a nett score of 79.



Gill also finished with the lowest gross score of 98. Mary Carpenter came second with a nett score of 80, just beating Trudy Hynes who had a gross nett of 80. Well done to all the ladies who took part, they were, of course, all winners!

The Juniors are all back to school now and the evenings are drawing in. A lot of the juniors play football on Saturday mornings so it is hoped that they will be able to play during half term. There is a lot planned for them for the new season in 2021 and let us all hope that everything will be back to normal by then so they can enjoy their golf.

The Veterans have also been very busy playing through all their competitions and have been successful in playing most of the fixtures. Also, despite the current situation, the veterans have been able to play a couple of inter-club matches. The first game was against Southsea and the second was against Chichester where they played for the Gerald May Memorial Cup in memory of Gerald May who sadly passed away recently. The overall result was a narrow victory to Selsey, 6 1/2 to 5 1/2 and Chichester Vice Captain, John Discomb, presented the Cup to the Selsey team Captain, Richard Jarvis. (as seen in the photo)



Gill Hill



## In the Garden

our monthly guide to gardening - In memory of Giles Peare

### Jobs for November

Lift Gladioli corns and store them in dry frost free conditions. Dig up the corns carefully, clean off any soil and cut away the stems about 5cm above the corn lay them in trays to dry completely before pulling off the remaining old stems.

Clean off any dry skin to ensure no pests are hiding.

Cornlets can be picked off and planted like large seeds in pots of compost.

Plant Paperwhite Narcissus this month and you can have flowers in 6-12 weeks, depending on the warmth of your room.

Plant the flowers in a glass bowl or a pot filled with coloured pebbles or beads instead of compost, place the bulbs onto the top of the pebbles or beads, fill with water to just below the base of the bulbs and top it up regularly stand it on a window sill and turn round regularly to prevent leaves or flower buds bending towards the light as they grow.

Collect any diseased rose leaves that have fallen to the ground and pick off any that are still attached to the stems, diseases such as blackspot can transfer from one stem to the next. Dispose of leaves in the dustbin or burn.

## Tip Top Tips

- This is a good time to plant bare root Roses, Trees and shrubs
- Finish planting Spring flowering bulbs
- Sow hardy varieties of Broad Beans and Peas
- Protect Cauliflowers by bending some of the larger outer leaves over the centre
- Protect some Holly berries with netting to preserve some for Christmas
- Clear away any remaining Summer bedding
- Harvest Squashes, Marrows and Pumpkins and store under cover
- Clear any rotten pond plant foliage and place netting over the pond
- Clean paving to remove slippy algae and grime
- Pack away hoses and irrigation equipment
- Plant bare root wallflowers
- Plant prepared Hyacinths to flower for Christmas
- Sterilize Greenhouse soil with boiling water
- Don't lift Parsnips or Brussells Sprouts till frost has touched them the flavour is a lot better
- Watch out for Hedgehogs and other wildlife when having bonfires.

### Help your local hospice – donate your time

Why not join our charity shop as a volunteer sales assistant, you'll warmly welcome customers to the shop and help them find hidden treasures!

Building confidence, improving well-being, making new friends, having fun and giving back to your local community is what volunteering is all about – so why not give it a go.

Your local hospice St Wilfrid's continues to support its community with end of life care through the coronavirus pandemic. Our charity shops and donation centres have implemented new floor layouts, appropriate signage, hand sanitising and appropriate PPE to help keep everyone safe.

Pop into your local charity shop or contact the voluntary services team on 01243 755815 [volunteers.office@stwh.co.uk](mailto:volunteers.office@stwh.co.uk) to find out more.



St Wilfrid's are launching a series of podcasts and videos to help those at home receive tips

and techniques on managing the symptoms associated with breathing difficulties. Combat anxiety and take control of your breathing at [stwh.co.uk/breathewell](http://stwh.co.uk/breathewell). A few episodes will be available at release with more to follow over subsequent weeks. Full series DVD/CD copies can also be requested at [LivingWellDayServices@stwh.co.uk](mailto:LivingWellDayServices@stwh.co.uk)



### St Wilfrid's Christmas Tree Recycling scheme returns!

The simplest, greenest and most charitable way to get rid of your Christmas tree this year is to get involved in St Wilfrid's Christmas Tree Recycling Scheme. Let St Wilfrid's wonderful team of volunteers collect your tree and ethically dispose of it for you from 6th to

22nd January 2021 in return for a donation to the Hospice.

Your donation will mean the gift of quality time for patients facing terminal illness to spend with their loved ones. St Wilfrid's Hospice is there for patients and their families all day, every day of the year. So while we are all enjoying some festive cheer over Christmas, our nurses, chefs and housekeeping staff will be here doing their bit to give patients and their families the best Christmas possible.

[stwh.co.uk/support-us/events/christmastrees](http://stwh.co.uk/support-us/events/christmastrees)



### Light Up A Life 2020

This December, St Wilfrid's invite you to remember loved ones with us at our traditional annual remembrance event held on Sunday 6th December at 6pm. This year a service will be hosted on Facebook [@stwilfridschichester](https://www.facebook.com/stwilfridschichester) via YouTube.

### Winter Raffle

You can play our winter raffle at just £1 per ticket and win up to £1000 with lots of other prizes available too, you can buy your tickets [stwh.co.uk/support-us/2020-winter-affle](http://stwh.co.uk/support-us/2020-winter-affle)

### Celebration Tree

Celebrate a loved one or a special anniversary by selecting leaf to be a specially inscribed as a lasting tribute. Leaves are available in gold, silver or copper coloured to be placed on the tree and have it inscribed with up to 26 characters. To find out how you can have your message on one of the first leaves

in the Hospice please email [Marcia.nguyen@stwh.co.uk](mailto:Marcia.nguyen@stwh.co.uk)

### Major Mick makes momentous milestone

Major Mick's 'Tintanic' challenge got underway this past weekend, as the 80-year-old ex-army major began rowing the first few miles up and down the Chichester Canal in a home-made corrugated iron boat.



Major Mick has rowed his way into the hearts of many with his 100-mile 'Tintanic' challenge for St Wilfrid's Hospice, raising over £23,500 so far.

This represents the entire running costs required to fund all the Hospices' services for a single day.

The 80-year-old retired ex-Major remarked, "Absolutely astounded to meet this wonderful milestone. The work of the Hospice is more vital now than ever!"

As he nears the halfway mark of his challenge, the Chief Executive for St Wilfrid's Hospice shared this thank you message.



Alison said, "We are deeply grateful to Major Mick for his wonderful 100-mile 'Tintanic' challenge in support of St Wilfrid's Hospice.

At any one time we are supporting 330 patients both here at our beautiful purpose built Hospice in Bosham but with the majority in their own homes. The fundraising and awareness he builds for the vital work of the Hospice in these challenging times is a timely reminder we can all do something to make a difference to local lives."

You can show your support for Major Mick at [www.justgiving.com/.../majormicktintanic100challenge](http://www.justgiving.com/.../majormicktintanic100challenge)

Also please wave and snap a picture with the [#sawthetintanic](https://twitter.com/hashtag/sawthetintanic) if you see him on the canal.

St Wilfrid's Hospice currently relies on the public for 85% of all funding. Find out how you can help support or volunteer with the Hospice by talking to their experienced fundraising team at [fundraising@stwh.co.uk](mailto:fundraising@stwh.co.uk) or call 01243 755302 for tips and advice on making it safe and successful.





17 September 2020

## Selsey inshore lifeboat attempts to refloat yacht

**Selsey RNLI inshore lifeboat (ILB) was paged direct from the boathouse at 3.32pm on Thursday 17 September after an ex Selsey lifeboat crewman phoned the coxswain reporting a yacht drifting through the moorings just off the boathouse. As the coxswain walked on to the beach a Poole lifeboat crewmember visiting Selsey also reported the yacht to him .**



The ILB launched at 3.40pm but in the short time it took to muster the crews the yacht had run aground on the beach so the ILB made best speed to the yacht approximately 300 yards east of the boathouse. A tow line was quickly thrown to the single person on board the yacht.



The weather on scene was Wind Easterly force 3-4 sea state moderate in sunshine. Once the tow was established the ILB tried to tow the yacht off the beach before the tide dropped anymore.

Unfortunately with the wind and swell pushing the yacht on to the beach this proved unsuccessful .

The ILB was beached and the crew joined the Selsey Coastguard rescue team (CRT).The skipper of the yacht reported that he had a possible engine fire during the passage from Chichester harbour to Littlehampton and had drifted into the moorings before running aground. The Coastguards decided to get the engine room checked so two West Sussex fire appliances turned up and after using thermal imaging equipment gave the all clear. The Skipper was adamant he was staying on the vessel until the tide came in. The ILB crew and the Coastguards secured the vessel to a groyne and the yacht's anchor was kedged .



It was decided by the Deputy Launch Authority and the Coxswain that both Selsey lifeboats would return at 7.45pm to await the incoming tide as the sea conditions were due to get worse. The ILB would assist the yacht off the beach and the ALB would be off shore to assist if and when the yacht refloated.The ILB was released and returned to station at 4.56pm. the crew on this call were Helmsman Sam Corcoran –Smith, Max Wiseman and Jake Harnett.

17 September 2020

## Selsey RNLI inshore lifeboat leaves training to help broken down Rhib.

**The UK Coastguards had reports that a small Rhib with two people on board had machinery failure approximately 200 yards off the beach just to the west of the Medmerry Nature reserve.**



The Inshore lifeboat (ILB) was on exercise just to the west of Selsey Bill when the Coastguards tasked them at 7.13pm on 17 September.



The ILB made best speed to the area and were conned on to the Rhib by Selsey Coastguard rescue team (CRT) who had had also been tasked from the earlier incident with the yacht on Selsey beach.



The weather on scene was wind Easterly force 3-4 sea state smooth to moderate. At 7.30pm a tow was established between the two vessel and a course was set for Selsey East beach launching ramp. At 8.00pm the ILB arrived at the ramp and released the Rhib to be recovered . The Selsey CRT were also there to assist and take details. The crew tonight were Helmsman Sam Corcoran-Smith, Max Wiseman and Pip Skeet.

17 September 2020

## Both Selsey lifeboats launched as safety cover for refloat of yacht

**At 8.07pm on 17 September the Selsey all- weather lifeboat (ALB) launched to assist the inshore lifeboat (ILB) with the safe refloat of the yacht that had earlier run aground on the beach at Selsey.**

The skipper had stayed on the vessel and as the wind was due to increase making it difficult for the ILB to operate close inshore with the breaking sea, the plan was for the ILB to tow the yacht off the beach, but if this failed the ILB could take the tow line from the ALB to the yacht and the ALB would tow the yacht off.

The ILB having just been released from a previous call towing a vessel back to Selsey (see above) came straight the the yacht. It soon became apparent that the conditions were detiriating and the coxswain and deputy launch authority (DLA) who was on the beach decided the conditions were too dangerous for the ILB to operate in. The weather on scene was wind force 4-5 Easterly straight onto the beach in darkness.

The skipper of the yacht could see the vessel was not floating off the beach tonight and agreed with the Selsey Coastguard rescue team to let them assist him getting off the yacht. After the skipper was off the yacht the DLA and a local fisherman got some extra lines and secured the yacht to the groynes to help protect the vessel during the high water later that night. Both lifeboats were released at 9.30pm and returned to station.The crews tonight were ALB Coxswain Rob Archibald, Mechanic Phil Pitham, James Albrey, Andy Lee, Dan Langford and Terry Heally. ILB Helmsman Sam Corcoran-Smith, Max Wiseman and Pip Skeet.

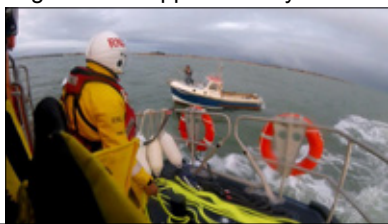
23 October 2020

## Selsey RNLI all-weather lifeboat tows angling boat away from danger

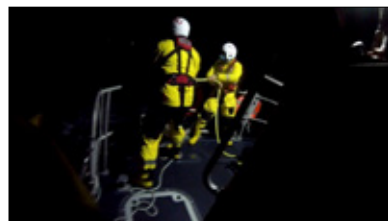
**At 5.46pm on Friday 23 October the lifeboat launched to the aid of the 21ft day boat which had machinery problems and was in danger of hitting the rock defences at Bunn Leisure.**

The 21ft Albacora had been on passage from Brighton to Emsworth and had just rounded the Mixon pole off Selsey bill when the engine started playing up. The vessel had two males aboard one who was suffering sea sickness so the skipper decided to head in towards Selsey as the conditions had deteriorated Unfortunately the engine failed approximately ½ a mile north west of Selsey bill and with the wind pushing the vessel towards the rocks.

The skipper transmitted a pan pan urgency broadcast on vhf radio which was picked up by UK Coastguard who



immediately paged the Selsey RNLI. The all-weather lifeboat (ALB) was on scene at 5.56pm and after checking the welfare of the two crew aboard the Albacora a line was passed to the skipper and a tow was established between the two vessels. A course was set for Chichester Harbour and the tow commenced at 6.02pm. The weather on scene was wind south west force 4, sea state moderate.



At 6.59pm Chichester bar beacon was reached and after entering the harbour the casualty vessel was brought to an alongside tow to enter Sparkes marina. The Albacora was safely berthed alongside in the marina at 7.34pm and the ALB departed at 7.45pm. The ALB arrived back at Selsey at 8.35pm and was recovered straight away. After recovery the boat was washed down, refuelled and made ready for service again. The crew tonight were Coxswain Colin Pullenger Mechanic Phil Pitham, Max Gilligan, Andy Lee, Max Wiseman and Neil Hopcraft.

25 October 2020

## Selsey all-weather lifeboat provides safety cover during Nav Andromeda incident

**The UK Coastguards had requested the launch of two RNLI lifeboats Selsey Shannon class 13-20 and Bembridge Tamar class 16-17 to provide safety cover to other agencies during the incident off the Eastern coast of the Isle of Wight**

Selsey lifeboat launched at 5.06pm on Sunday 25 October and headed to Whitecliff Bay to rendezvous with Bembridge lifeboat. As darkness fell both lifeboats proceeded to a position closer to the tanker and monitored the incident in case we were required. The weather on scene was wind south west force 4-5 sea state moderate in heavy rain showers.

At 9.22pm both lifeboats were stood down after the successful conclusion to the incident on board the Nav Andromeda. When Selsey lifeboat departed the scene, the tanker was 13.5 miles south west of Selsey Bill. Selsey lifeboat arrived back at Selsey at 10.17pm.the crew today were Coxswain Rob Archibald, Mechanic Colin Pullenger, Max Gilligan, Will Moir, Neil Hopcraft and Terry Healey.



SELSEY LIFEBOAT SHOP.

The Shop is open

Thursday, Friday, Saturday & Sunday 11am until 3pm

Subject to volunteer availability and Covid 19 restrictions.

Christmas Cards, Calendars, Diaries and Gifts in stock

Friends of Selsey Medical  
Centre (FSMC)  
Charity No: 1013645



If you live in Selsey, you probably love it and hopefully that love includes the Medical Centre and the Friends who continue to provide essential equipment



It has been a really difficult time for the Doctors, Nurses and Support Staff and their problems are likely to continue for some time yet.

The flu clinics have had to be postponed due to the lack of vaccine--- a National problem-- which has meant extra work reorganising appointments.

A warm welcome to any new members.

We know of three additions to our number who have also agreed to join the Committee.

The Friends still need more members so if you feel you can help, please contact our Membership Secretary Rosemary Cook by phone or e-mail and she will provide you with an application form and advise on how to join.

It's only £4 per person per year or more if you wish.

Tel: (01243) 945263 e-mail [diablo1066@outlook.com](mailto:diablo1066@outlook.com)



# SELSEY ROOFING

Your Local Contractor by  
G.K.Foster & Son Ltd est 1969

For all your roofing needs no matter how big or small

. Re-roofing . Lead work

. Flat Roofing . UPVC Fascias

. Soffits and Gutters

. Repointing and Rebuilding old Chimneys

.General overhauls and Maintenance

Checka-trade approved

Tel Selsey 01243 641205

Mobiles:

0783 1265 154 (Graham) or 0788 4232 447 (Ricky)



**PLEASE NOTE LAST DATE FOR  
SUBMISSIONS FOR ENTRY INTO NEXT  
SELSEY LIFE IS 16TH NOVEMBER**

Selsey Life is compiled and published by

SELSEY LIFE Ltd. . Tel: 01243 602729 e-mail: [selseylife@btinternet.com](mailto:selseylife@btinternet.com)

*To the best of our knowledge all firms and organisations mentioned in this issue are reputable. Advertisements and articles in this publication have been supplied by local businesses and organisations. Therefore Selsey Life cannot be held responsible for any inaccuracies which may appear.*



## TEA AND TEARS ON THE SOMME

by Patricia Read

In September 1995, Chris and I were driving home after living in Gibraltar for two years, when we decided to do a detour via The Somme, as it was an opportunity to visit sites of WW1 war graves, which neither of us had done in any depth before. That decision was to bring about many return visits to the area for the next two decades and beyond, and make lasting friendships.

After spending a rather uncomfortable night in a bed and breakfast establishment near Albert, we decided to look around the area and then carry on to Calais to catch the ferry home. We had travelled hundreds of miles, and both of us were looking forward to a proper cup of tea, especially after the breakfast we'd been offered that morning.

We'd been back on the road for less than ten minutes when I

shouted to Chris that I had seen a sign, which said Ocean Villas Tea Room. Chris braked, turned the car round, and sure enough there was a rather dilapidated farmhouse standing on its own in the middle of nowhere, with chickens wandering around and the very English name of Avril Williams' Tea Room above the door.



c avrilwilliams.eu

We were welcomed by Avril, a jolly lady, and her two young children, a boy and a girl, and given a very British pot of tea and bacon sandwiches. Avril told us over tea that she'd recently divorced and given up her bank job in Croydon and moved lock, stock and barrel to The Somme as she had a sister some miles away also with a bed and breakfast establishment. She had bought this abandoned farmhouse quite recently and was struggling to make a go of the business. Ocean Villas was the name given to the village of Auchonvillers by the Tommies in WW1, and is situated half a mile behind the Allied front line of 1916 in the heart of the Somme Battlefield area. Although the original farmhouse had been destroyed, this one was built over the original cellar, which remained intact throughout the Great War, and was used as a stretcher-bearers' post, dressing station and shelter for many troops. Names and details of soldiers of many different regiments could still be seen on the walls where they were carved into the stone 100 years ago, and it was a very moving experience to be shown down into the cellar and given the tragic history of the place.



c IWM (Q4545)

When we arrived, the farmhouse was a chaotic and eclectic mix of World War One history, hundreds of books, photographs and an outhouse full of war memorabilia, including at that time, rusty shells, hand grenades and various bits of shrapnel, mainly collected by her young son when hunting the surrounding ploughed fields and who announced they were no longer live, but we gave the building a wide berth anyway. Over two decades later, this small collection is now housed in a refurbished building next to her guest house and tea rooms. It is the only military collection on the Somme battlefields, which comprises First and Second World War artefacts and houses a collection of rare and important militaria and memorabilia.

On our arrival on that day in 1995, we were also greeted by an Australian, Jim, one of her few paying guests at that time, wearing an Aussie hat complete with corks on strings around the brim and a guitar in his hand. After several hours over lunch it became clear that we must spend at least a few nights with such interesting company. The next few evenings were spent around a table of home cooked food and flowing red wine, while we were regaled with the history of The Somme and listened to Jim singing

a heart-wrenching song called The Snowy River Men, which told the story of Les Allen, who lost his life on The Somme. Little did we know then that a few years later we would join Jim and Avril on the hunt to find Les's grave, and eventually place on it our own remembrance crosses and poppies. Jim actually came home with us, when we left for the ferry in Calais, which caused some delay at Customs with our car full of three year's smaller belongings which hadn't been shipped, and an Australian with a guitar and a bag of shrapnel, but that story must be left for another time. Many more evenings in the ensuing years were spent at Ocean Villas with more wonderfully informative guests and more food and wine, the main topic of conversation being the battles and history of the Great War.

Over the next few years we visited Avril and watched her family and her business grow. We helped her dig and uncover her trench, sometimes helped with the cooking and generally mucked in with this still chaotic, but lovable farmhouse and family. We spent Christmases there, watched her lambs being born, and I walked with her dog in the still of early mornings as the sun rose, the only person walking alongside the ploughed fields in the silence where battle was once fought, still passing the odd rusty shell which had been placed on the side by the farmer, uncovered during ploughing and marked with a yellow cross to be collected and checked.

Just five minutes walk from the farmhouse is the Newfoundland Memorial at Beaumont-Hamel, which depicts a large bronze caribou standing atop a rocky mound overlooking the former battlefield. From the top of the mound a visitor can see panoramic views of the former battlefield and trenches, which are remarkably well preserved. Three bronze plaques at the base commemorate the 820 men from the Royal Newfoundland Regiment and Royal Naval Reserve who gave their lives during the Great War and whose bodies have never been found or identified. On 1st July 1916 they were called upon to join in the fight, but found themselves immediately under German machine gun fire. Only 68 of the 801 men who had gone into battle answered roll call the following day. They had suffered one of the highest casualty rates of that day, the first day of the Battle of the Somme. One single tree survived the devastation in the area: this is the skeleton of the 'Danger Tree', named as it was situated in a particularly exposed spot.



c veterans.gc.ca



Danger tree  
c wikipedia.org

Over the years we have visited many war graves to pay our respects, names such as Tyne Cot, Delville Wood, Vimy Ridge, and stood for The Last Post at Menin Gate in Ypres.

The Thiepval Memorial is just a five minute drive from Avril's farmhouse, and dominates the landscape for miles, where some of the heaviest fighting took place. It is the largest Commonwealth memorial to the missing, in the world, designed by Edwin Lutyens, and commemorates more than 72,000 men of British and South African forces who died in the Somme sector and have no known grave.



Thiepval Memorial  
c Wikipedia.org

Tyne Cot Cemetary, a couple of hours drive from Albert, is the largest Commonwealth military cemetery in the world, with 11,954

graves and a memorial wall containing the names of a further 33,783 soldiers of the UK forces, including three British Army Victoria Cross recipients.



Tyne Cot cemetery  
c Iain McHenry vwma.org.au

The towering Vimy Ridge Memorial, another couple of hours drive from Avril's, is Canada's largest overseas National Memorial. It commemorates more than 11,000 Canadians killed during the 1st World War in France and who have no known grave. Many of them died in the Battle of Vimy Ridge.



Vimy Ridge Memorial  
c wikipedia.org

Altogether there are 410 Commonwealth cemeteries on the Somme, 22 French Military Cemeteries and 14 German Cemeteries.

Day one of the Battle of The Somme left 19,240 dead and over 38,000 injured. The battle lasted 141 days from July 1st to November 18th 1916, with a total of 419,654 Commonwealth soldiers dead, of which 72,000 have no known grave.

Avril has now expanded her 'Ocean Villas Tea Room and Guest House' to comprise numerous educational facilities for visitors, including a venue for lectures, the museum and the original section of a British trench.

How glad I am that we made that detour back in 1995, you have to be there to feel the loss and humanity, and the sheer numbers of young men who gave their lives for our country. Thank goodness for those who keep their memory and their resting places so beautiful and who make sure that the red poppy and memorials mean we shall never forget.



An elephant and a crocodile were swimming in the jungle, when the elephant spots a turtle sunning himself on a rock. The elephant walks over to the turtle, picks him up in his trunk and hurls him far into the jungle.

"What did you do that for?" asked the crocodile.

The elephant answered, "That turtle was the one that bit me almost fifty years ago."

The crocodile said, "And you remembered him after all these years? Boy, you sure do have a good memory."

"Yep," says the elephant. "Turtle recall."

Thank you to all our Club Members and friends for supporting us through this time of uncertainty.

Due to Government instruction we are closed as from the 5th Nov.

We will reopen in December bigger and better than ever before, we have plans so watch this space..

From Julie Danny and the team at the Selsey Private Club Ltd

The Selsey Private Club, Coxes Road

PO20 9AN 01243 606015

New members welcome.



Here at the Selsey Private Club

We are keeping up with the things you love,  
We have cabaret nights with a meal and a show,  
Just like it was some years ago.

We're a friendly Club that is family run  
Your safety and enjoyment is our number one  
We're Covid secure with track and trace  
You'll find hand sanitizer all round the place.

Julie and Danny are the hosts with Mark and Maria too  
Just give us a call or come along and we will welcome you

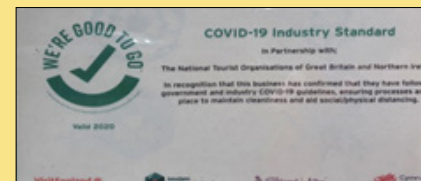
We'll show you around and have a chat while you can have a beer  
to join the club the membership fee is just £30 a year.

We have Cabaret nights on Saturdays  
Sunday Roast and light lunches Monday to Friday..

Thursday is Quiz and Bingo night..

We will be having Christmas day lunch  
and a new years Eve event, watch this space for further details or call the Club 01243 606015

On the Friday 18th and Saturday 19th December  
we are hosting a cloud 9 Christmas event  
with dinner, again call the Club for further information.



Please see our Facebook page for updates.

The Selsey Private Club Ltd

Join us  
For a  
Cloud Nine  
Christmas

Friday 18th/Saturday 19th Dec

2 Course meal followed by  
a Christmas Cabaret  
from Cloud Nine

Call The Selsey Club on 01243 606015

and Book your Tickets today!





## THE CAT & RABBIT RESCUE CENTRE

Tel: 01243 641409 Reg. Charity no. 1010000

Email: [info@crcc.co.uk](mailto:info@crcc.co.uk) [www.crcc.co.uk](http://www.crcc.co.uk)



Hello everybody! It's me Markus the office cat bringing you all the latest news from The Cat and Rabbit Rescue.

Unfortunately, despite some interest last month's pet of the month the rabbits Chalupa and Pudding have not found their forever home yet.

A big thank you to everyone that got involved with our online Virtual Fayre, I hope I can bring you the final figures next month.

This month I would like to tell you about a few of my favourite people right now. These are some amazing supporters that have gone above and beyond to help The Centre in these difficult times. Firstly let me tell you about Vanessa, Christine, Sara and Kimberley, they have been making and selling face masks all to raise funds for us. I do find it interesting seeing you all wear those masks now, but my staff tell me they are very important and I shouldn't stare. Can you believe that last month they reached £1000 raised, thank you so much ladies. Some more lovely supporters of The Centre are Eve and her husband Chris. Back in September Chris braved the shave and had his hair shaved off in aid of the centre. He raised an amazing £565.65 and I must say he looks a bit more handsome for it too. What a lovely thing to do, thank you so much guys.

My staff told me to say to my readers that rehoming is still going very well at The Centre and because of this we do have a little bit of space to take in animals that need us. If you think you may need help rehoming your animal, please get in touch with my lovely staff.

Lovely to chat to you all again, see you next month.

Love Markus x

**P.S. Please check our website [www.crcc.co.uk](http://www.crcc.co.uk) to see how we are now rehoming and for the animals available for adoption. If you are looking to adopt a cat please do ring the centre, for rabbits please fill out an online application form. But for kittens and guinea pigs please do check the website and only contact us if you see something suitable on there.**

THE CAT & RABBIT RESCUE CENTRE  
Holborow Lodge, Chalder Lane, Sidlesham, W. Sussex PO20 7RJ



Also find us on facebook  
[www.facebook.com/catandrabbitrescuecentre](https://www.facebook.com/catandrabbitrescuecentre)



## THE CAT & RABBIT RESCUE CENTRE

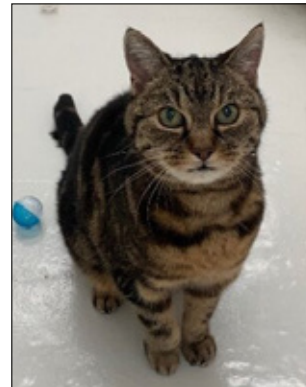
Have you visited the Cat & Rabbit Rescue Centre Charity Shop at 9 The Parade, Selsey?

It is full of fantastic bric-a-brac, including antiques, pictures, jewellery, as well as clothes for every occasion, beautiful bedding, curtains, craft items, and good quality furniture.

If you have time to spare, why not become a volunteer, just visit Sue or Nicky in the shop.

### Pet of the Month November 2020

This month please allow us to introduce you to Althea. Althea is a gorgeous 17-year-old female tabby cat who has been with us at The Centre since August. Unfortunately, this is not her first time at with us, she originally arrived in January after her elderly owner was no longer able to look after her. She soon found herself a new home but during lockdown she got very used to only having her owner around so when visitors begun coming to the house again it made her scared.



Althea is a really sweet little girl but she can also be quite nervous, she really enjoys a lap to sit on but it can take a little bit of time to warm up to someone new. She also loves going out into the garden, she doesn't go far but just enjoys sunbathing. Althea is looking to find a calm, loving home where she can get lots of attention and preferably on a 1 to 1 basis. She would like to be rehomed where she is the only pet. Althea can be adopted through our golden oldie full foster care scheme, this means she can come back to see the vet at the centre for the rest of her life with no charge to the owner.

If you think you may be able to give Althea the new home she deserves, please send us an email or give The Centre a call Monday to Friday 9am-12pm.

Without a doubt, my favourite Robin Williams movie is Mrs. Fire.

My poor knowledge of Greek mythology has always been my Achilles elbow.

## Aerial Satellite Services TV Aerial & Satellite Installers Domestic and Commercial contractors

- Satellite installers
- Extra TV & phone points
- Digital TV & DAB aerials
- Communal systems
- Network points

**01243 837784**  
**tvaerials@sky.com**



### BRENT LODGE BRIEFINGS - WORN OUT WILDLIFE

The weather is usually unpredictable during November- with cold temperatures, strong winds, rain, and storms predicted, some wildlife will have to battle the elements to survive. Many mammals will be busy preparing for hibernation so during these conditions birds are usually the most exposed. Powerful winds can blow them off course and push them miles away from their homes or habitats. Heavy rainstorms can cause smaller or weaker birds to become separated from their flock too. We anticipate admitting a few birds over the next few weeks who were affected by these seasonable conditions. When treated quickly, normally in these circumstances they do recover and only require a meal and a safe place to recuperate prior to release.

This stunning male sparrow hawk was recently released after a short period of rehabilitation. It is always a great pleasure to treat and release recovered animals in the hopes it will safeguard the future of our declining native wildlife.

With harsher winter conditions ahead, we ask you to help the wildlife in your garden, you never know it could be one of the patients we have released. Please remember to put out extra food for the birds and ensure there is fresh water out for all the wildlife, especially when all other sources of water freeze over.



Please continue to keep a look out for the last few hedgehogs in search of suitable hibernation spots. They are attracted to large piles of leaves and branches, which make ideal hibernacula. Unfortunately, such piles of garden debris often turn out to be bonfires, particularly in November. Please make an extra effort to check bonfires for hibernating hedgehogs before lighting them – ideally, build it on the day you plan to light it. Additionally, please think about creating a leaf pile to provide your local hedgehogs with bedding material during the autumn and early part of winter.

We only have a small team of staff to run the charity, care for patients and maintain the rehabilitation enclosures, so without our network of volunteers, it will be another busy season ahead. Hedgehog care season will see staff continue to work hard to care for hundreds of sick, injured, or underweight hedgehogs and other wildlife casualties. Our team will work tirelessly to clean, feed and care for all the patients. At the peak of the season we can go through over 100 tins of cat and dog food a day, so any donations of tinned food would be most appreciated.

If you do find an underweight hedgehog (below 600g) or any other wild animal in need please do give us a call, we are more than happy to help. Our new mobile-friendly website offers plenty of advice, so if you are out and about you have help and advice readily available at your fingertips. [www.brentlodge.org](http://www.brentlodge.org)

T: 01243 641672

As I get older, I remember all the people I have lost along the way. Maybe being a tour guide wasn't the best job for me...

It is getting worse - my fear of moving stairs is escalating.

I find that I struggle a lot with Roman numerals, until I get to 159 - then it just CLIX.

My three favourite things are eating my family and not using commas.

Saturday evenings during November

**THE VICTORY CLUB**  
31 High Street, Selsey

We are currently accepting membership applications.



We can be found on Facebook  
[www.facebook.com/Thevictoryclubselsey](https://www.facebook.com/Thevictoryclubselsey)  
Our web site  
[www.victoryclub.org.uk](http://www.victoryclub.org.uk)

7th

Fun Bingo  
with  
cash prizes



14th

Qu

Due to the new Covid lockdown restrictions we regret we are now closed from Thursday 5th November until the 2nd December. We look forward to seeing you all again in December.

Card Bingo



COVID-19 please note: our 'in club' entertainment is temporarily limited...

Monday evening  
Bingo with the  
Snowball

Wednesday evening  
Bingo with the  
Snowball

Thursday evening  
8 games of Card Bingo  
& Chase the Joker

Friday evening  
2 games of Card bingo

Sunday lunchtime  
Meat Raffle, Card Bingo



CODEBREAKER WORD PUZZLE

The same number represents the same letter. Crack the code and fill the grid. To help you get started some words are already in place.

1	2	3	4	5	6	7	8	9	10	11
12	3		L	I	G	H	T			
15	12	5	3	10	16	15	13	1	8	
9		19		13		12		1	2	4
7	13	13	4		12	3	6	13	4	
5		15		14		5		4	12	8
8	12	1	8	13	10	2	4		1	3
13		5		21		14	13	1	1	12
9	12	8	3	5	22		14		16	
8		23		12	15	6	2	13		8
	21		1		16		15		9	7
1	18	12	4	4	16	18		12	5	
	12		13		10	16	15	18	12	15
20	15	5	13	10		4		12		21
	10		22	15	16	19	13	15	20	
12		22		13		13		21	2	1
20	5	4	4	5	12	15	21		15	
2		12		6		5		21	13	10
25	2	9	9	7	5	3	5		12	
25		13		8		13		26	2	16

1	2	3	4	5	6	7	8	9	10	11	12	13
14	15	16	17	18	19	20	21	22	23	24	25	26

Across

1. Less dangerous  
6. Australian runner  
9. Our "mother"  
14. Jungle climber  
15. Carbonium, e.g.  
16. Gawk  
17. In the works  
20. Morgue, for one  
21. "... he drove out of sight"  
22. Present  
23. Canada's neighbor  
24. Floral necklace  
25. Carouse  
34. "\_\_\_ it the truth!"  
35. Assumed name  
36. "I" problem  
37. Somewhat, to Salieri  
38. Pasture  
39. Gossip  
40. \_\_\_ grecque (cooked in olive oil, lemon juice, wine, and herbs, and served cold)  
41. \_\_\_ de leche  
42. Arch type  
43. Trumpet, trombone, flute, e.g.  
47. Anomalous  
48. Crag  
49. Substantial size  
52. Blue  
53. Buddy  
56. Not extreme  
59. Catlike  
60. Romanian coin  
61. Military cap

Down

1. Aspersions  
2. Hokkaido native  
3. Grow dim  
4. Charlotte-to-Raleigh dir.  
5. Least cooked  
6. Cork's place  
7. Guernsey utterance  
8. Annul  
9. Abstains  
10. Come by  
11. Drops from the sky  
12. Put one's foot down?  
13. Chick's mom  
18. Kind of fall  
19. Dump  
23. "Do \_\_\_ others as..."  
25. Grandpa, to some  
26. Garlicky mayonnaise  
27. Former empire  
28. Calls a cab  
29. Vote into office  
30. Mason, at times  
31. Despot's duration  
32. "Snowy" bird  
33. Shows excessive fondness  
38. Touch tenderly  
39. Person of action  
41. Swindler (informal)  
44. Daydream drawing  
45. One of the Four Corners states  
46. Fair to middling  
49. Garbage in, garbage out, for short  
50. Father of Balder  
51. Central part  
52. Bowl over  
53. Dinghy or dory  
54. Autumn tool  
55. Aroma  
56. "Welcome" site  
57. Charge  
58. Density symbol

P I C S C O P E W E F  
B R O N C H O O E V A M P I R E  
E T I C O R A L T A I  
U T R E C H T K N D E B U S S Y  
Z G U F I X U P R L B  
V E G E T A B L E T R U M P E T E R  
L R H A I O A T E  
D F H U M M I N G B I R D A L  
A C A C I A B V A K E T T L E  
I K C O L O M B O F L M  
S U R V E Y Y I I P O T A T O  
Y Y R E C A L C U L A T E S N  
P T L N E I A O C  
F I R E P L A C E S T O R Y B O O K  
O E O E N J O Y M V N  
U N K N O W N G U D I G I T A L  
E A T D I A R Y G O K  
P E N G U I N N C J A N U A R Y  
R E T J E W E L N S Y

[p19495 - Visual Puzzle]

7, 12.

FOOTBALL

ANSWER: 1=R, 2=C, 3=P, 4=F, 5=L, 6=I, 7=K, 8=O, 9=N, 10=V, 11=S, 12=E, 13=A, 14=T, 15=D, 16=G, 17=U, 18=X, 19=H, 20=Y, 21=M, 22=B, 23=J, 24=W, 25=Q, 26=Z.

L S T O  
T O M A H A W K  
G N I A  
W O R D P L A Y  
E A N  
S E A F L O O R  
A L U M N A E  
R G T E  
S H U T O F F  
S A E A  
O L I G A R C H  
U K M E T E  
P L U S F L  
A W H E L M  
B Y T E R Y E  
O E L E C T  
A U N T N E E  
T S I T E D

1) Chris Blackwell  
2) Jethro Tull  
3) The Buggles  
4) Michael Parkinson  
5) Royal College of Music  
6) Sail  
7) Morgiana  
8) Vengaboys  
9) Carrow Road  
10) Johann Sebastian Bach  
11) Huyton  
12) Ceres  
13) Chicken Maryland  
14) Topeka  
15) Herbert Hoover  
16) MCMXXXIX  
17) Bird  
18) Pam Dawber  
19) Black Panther

Cube and Gears

ANSWER: (1) 6, 7, 9. (2) Anticlockwise.

How is it done?  
Which two pieces were used to produce pattern 5?

4, 8.

7	9	5	4	3	2	6	8	1
4	3	1	7	8	6	9	2	5
2	6	8	9	1	5	3	7	4
5	2	4	3	9	1	7	6	8
6	1	7	2	4	8	5	9	3
9	8	3	5	6	7	4	1	2
3	4	6	1	2	9	8	5	7
8	7	2	6	5	3	1	4	9
1	5	9	8	7	4	2	3	6

SKINNY TURKEY TEE'S \$10

Board Games

S	N	A	K	E	S	D	O	M	I
G	K	C	A	B	A	S	E	O	N
A	M	M	O	C	N	D	L	P	B
N	I	N	N	H	E	S	A	I	A
C	L	E	M	E	N	S	D	H	T
H	U	D	O	T	S	S	D	S	T
E	M	N	G	I	M	R	E	E	L
C	A	O	E	C	O	R	R	I	S
K	H	J	R	T	A	C	T	O	E
E	R	S	I	A	T	I	L	O	S

Find all the words from the word list (ignore spaces and dashes, if any):

BACKGAMMON  
BATTLESHIP  
CHECKERS  
CHESS  
DOMINOES  
LUDO  
MAHJONG  
NINE MEN'S MORRIS  
SNAKES AND LADDERS  
SOLITAIRE  
TIC-TAC-TOE

3	8			1			4
		2	6			7	
			4	8	7		3
2		1				2	3
4	9	5		6		4	6
6			8	5	4		
	7				6	8	
8			7				9
							2

Which button will ring the bell?

4 6 7 1  
2 3  
6 2 4 5  
3 5 1 2  
7 1 3 5 3 4  
6 1 3 4  
2 3

This is zigzag word search puzzle. Words go left, right, up, down, not diagonally, and can bend at a right angle. There are no unused letters in the grid, every letter is used only once.

Solve the Sudoku task so that each honeycomb cell, each horizontal row and each diagonal have different numbers from 1 to 7.

Write the numbers so that in each of the squares there are numbers from 1 to 5 in each horizontal and vertical line.

4				1		4
		2		2	4	3
1	4	5		5		
3	1		2	3		3
						1
	2	5		5		
3	2		4	1	4	5
1				4	3	
			4	5		
		3	1		5	

Steven Spielberg was discussing his new project - an action docudrama about famous composers starring top movie stars. Sylvester Stallone, Steven Segal, Bruce Willis, and Arnold Schwarzenegger were all present at the initial casting sessions and Spielberg strongly desired the box office 'oomph' of these action superstars. So much so that he was prepared to allow them to select whichever composers they would portray, as long as they were very famous.

"Well," started Stallone, "I've always admired Mozart. I would love to play him."

"Chopin has always been my favourite, and my image would improve ten-fold if people saw me playing the piano" said Willis. "I'll play him."

"I've always been partial to Strauss and his waltzes," said Segal. "I'd like to play him."

Spielberg was very pleased with these choices. "Sounds splendid," he said, "I'm very pleased with these choices" Then looking at Schwarzenegger, he asked, "So who do you want to be Arnold?"

And Arnold says ...

"I'll be Bach"

Selsey Community Christmas Lunch

'at home'

This year we will deliver a free Christmas meal to you in your own home

Please phone 01243- 201616 to place your order







# East Beach Church

Find us on our website [ebecselley.org.uk](http://ebecselley.org.uk) for more information

Prior to this new lockdown of 5th November, it was great to start our Kids Church services with appropriate family ‘bubbles’. This did not stop any of the fun as we enjoyed a Harvest Thanksgiving services with the help of our puppets.

We also welcomed back last month to the church those who valued the Return to Sunday School Dementia Friendly Service, It was good to give thanks and listen to well-known Harvest hymns as we looked back with memories at Harvest in times past. Even our puppets were a part of the service too!

So whilst fully understandable, it is a shame that we are not able to hold open church services now for November. We will continue to stream services as per the schedule below, but Wednesday afternoons are the only time the church will be open, and this will be for private prayer.



Looking forward, **The Big Quiz Night – Saturday 14th Nov 7pm** - We will be joining thousands of others to raise funds for TEARFUND with an online quiz night. Please contact the church ([067741](tel:067741)) for more details.

Then in December we are hoping this new lockdown will be eased as we look forward to our next **Return to Sunday School Service** which is at **2.30pm on Wednesday 9th December** and again, the Selsey Care Shop ([01243 201616](tel:01243201616)) are taking bookings for this specific service.



As we look forward to Christmas, how important perhaps this year more than ever, is the story of Hope, of Christ coming to the world bringing light and hope in the darkness. On **Sunday 13th December** our **Kids Church** service will be back as they enjoy an interactive **Christingle Service**. Once again, you are assured of plenty of activities and fun. The Kids Church services are relaxed – be warned!

Then on **December 20th** we are hoping too that we can be open for our popular **Carol Services**. To accommodate Social Distancing, we are looking to have the same service twice that day to allow plenty to attend (pre-booking required still).

Of course this does all depend on the Covid guidelines at the time, and we will do our best to keep you updated here and on our website. Always do feel free to call the church for clarification, or indeed if you would like prayer or we can support you in other ways.



Day	10am	7pm (except Sunday)
Sunday	10am - All-age Worship (on YouTube and DVD)	5pm - Evening Worship (on YouTube and DVD)
Monday	Songs of Praise (on YouTube and DVD – traditional hymns)	
Tuesday		Prayer Meeting (via Zoom)
Wednesday	1.00-4.00pm Church building open for private prayer	
Thursday		Lifegroup (via Zoom)
Friday	Sunbeams (on YouTube - Songs & Stories for parents and toddlers)	
Saturday		Fun Evening (on YouTube, once a month)

We do continue to pray for God's protection upon Selsey, our families & friends, as well as the wonderful medical & care workers across the country.  
**East Beach Church, Marisfield Place, Selsey - Tel: 01243 607741**

## SELSEY METHODIST CHURCH



### SELSEY METHODIST CHURCH SERVICES

We regret the church will be in lock down from next Sunday 8th November until the 6th December and there will be no services or other organisations meeting there during this time.

Our minister is Revd John Scrivens  
[01903 416501](tel:01903416501)

I have decided to sell my vacuum cleaner - all it is doing is gathering dust.  
Don't you hate it when someone answers their own questions? I do.



## St. Peter's Church

Rector: Fr Andrew Wilkes  
Email: [rector.selsey@gmail.com](mailto:rector.selsey@gmail.com)  
Tel: 01243 601984

St. Peter's Church will be open on Wednesdays and Sundays 10 am to 12 noon for private prayer.

There will be no services until further notice.

Please contact the Reverend Andrew Wilkes ([601984](tel:061984)) for more information.

### The Catholic Parish of Our Lady of Mount Carmel & St Wilfrid

Church Road, Selsey, PO20 0LS  
Telephone: 01243 602312



#### Service Times

10.00 a.m. Mass every Monday, Wednesday, Friday and Sunday.

Subject to change. Please check website: [www.stwilfridselsey.co.uk](http://www.stwilfridselsey.co.uk) or Newsletter on Parish Noticeboard outside the Church.

Due to the new lockdown instructions, please keep checking the website, which will be posting the latest information as soon as we have any.

Hedgehogs, eh? Why can't they just share the hedge.  
I find it very difficult explaining puns to kleptomaniacs as they are always taking things literally.  
I like to hold hands at the movies - the trouble is it upsets the strangers sitting next to me.  
Well, waking up this morning was a real eye opener.



## Selsey Model Boat Club

The Club meets twice a week at the pond on East Beach, weather permitting, when members sail their radio controlled boats  
Times: 10.00am until noon on Sundays and Wednesdays  
The first Sunday of each month is Race Day  
New members welcome  
or just pop along to have a look and a chat  
contact Chris on Selsey [601550](tel:0601550)



## Selsey Men in Sheds

A non-profit making organisation  
Open Tuesday & Thursday 10 - 4  
Saturdays 10 - 2  
Membership £10.00 per month or £100 per year  
Complete your own wood / metal projects or be involved in group activities  
If you are interested in joining contact  
Mick Webb 07939 880029  
email [m.c.webb46@gmail.com](mailto:m.c.webb46@gmail.com)



## The Hidden Garden

a Selsey Community Garden for all to enjoy. Come and join us and meet other passionate gardeners, learn seasonal gardening ideas, swap seeds & plants and help grow fresh vegetables and flowers to take home.

Open every Saturday 10-4pm  
at The Bridge Support Centre  
behind Selsey Library, PO20 9EH  
Contact Paul on [07815 790770](tel:07815790770) for more information  
organised by 

People who lack the patience for calligraphy will never have properly formed characters.  
The boss's son works as a lifeguard, but unfortunately he couldn't save the drowning hippie. He was too far out, man.

34

35



Job Opportunities  
Call 07989 534 852



★ roller coaster ★



★ the sizzler ★



★ the waltzer ★

west sands

funfair

fun for all the family

unlimited rides

only £10

from 12pm-5pm

all rides and activities included

Open 7 days a week  
GENERAL  
PUBLIC  
ARE  
WELCOME.

 Find us on  
Facebook