

# Selsey Life

Community Magazine

FEBRUARY 2022  
ISSUE NO. 274

Find us on  
Facebook

[www.selseylife.weebly.com](http://www.selseylife.weebly.com)



£1

in the yellow pots



Inside this month:  
Mike Christie tickets to be won!  
Start of a new series Around the County in  
80 months  
Rev. Wilfrid Harry Bourne  
And lots more for your Pound.





With the weather getting brighter and hopefully warmer over the next month or so, many of you or loved ones will be using your bicycles more often. Thieves target bikes as they can be stolen quickly. This month we will provide tips on how to protect your bike from theft.

If you've ever had your bicycle stolen, you'll know how upsetting it can be. Our practical tips will help keep your bike safe and out of the hands of thieves and advise on how to get it back if it is stolen.

The most important thing to remember is, double lock your bike and register the frame number.

### Ten ways to protect your bike

Follow these 10 tips to ensure your bike remains safe, secure and not a statistic.

#### 1. Double lock it

Using two locks slows thieves down and makes your bike less of a target. Use two quality locks, at least one of which is a D-lock. Thieves are less likely to carry multiple tools, so use two different types of lock if possible.

#### 2. Lock the lot

Lock the frame and both wheels to a secure cycle stand.

#### 3. Secure it

Secure your bike as close to the stand as possible to give any thieves little or no room to manoeuvre.

#### 4. Take removable parts with you

Take parts that are easy to remove with you, such as wheels, lights, baskets or the saddle. Or use locking skewers or nuts which can increase security by securing the bike's components to the frame permanently.

#### 5. Park securely

Lock your bike at recognised secure cycle parking. It should be well lit and covered by CCTV.

#### 6. Register it

Register your frame number for free on a cycle database such as BikeRegister or immobilise.com. Alternative companies can be found on the "Secured by Design" website. The frame number is usually found underneath the bike between the pedals or where the back wheel slots in. If your bike is ever stolen and recovered by the police, it can be traced back to you.

#### 7. Mark it

Get your bike security marked. It's a highly effective, visible

deterrent to bike thieves. They know that if they are caught with a registered bike, the owner can be traced and they will be arrested. Bikeregister provide a list of police bike marking events. You can also mark your bike with SmartWater.

#### 8. Remember safety begins at home

Take the same care to lock your bike securely at home as you would on the street. Avoid advertising that you have a bike at home, for example, by removing car roof racks, and creating 'privacy zones' on apps like Strava to avoid disclosing your location.

#### 9. Check ownership

Ask for proof of ownership and check the bike frame number on a cycle database such as Bike Checker at BikeRegister. Alternative companies can be found on the "Secured by Design" website.

#### 10. Act fast

If your bike has been stolen, contact us as soon as possible by calling 101 or reporting online. Give us your frame number, cycle database number, a photo and any other details and make sure you update the status on the cycle database where you registered it. The sooner we know, the sooner we can act, which might stop it being sold on.

#### What to do if your bike is stolen

There are various courses of action open to you if your bike goes missing. Whichever you take, make sure you do it as soon as possible. Time really is of the essence.

Stolen Bikes in the UK will help to spread the word on the theft of your bike and offer you advice to help get it back.

Find that bike lists adverts for bikes placed on online marketplaces, which you can check frequently to see if yours has been listed for sale.

Adverts are usually placed within 24 hours of the theft but if not, keep looking as they sometimes take a few months to pop up.

Police officers and PCSOs will be conducting regular patrols around the Chichester area when time permits.

Front office opening hours  
Chichester:  
Chichester Police Station,  
Kingsham Road, Chichester, PO19 8AD

Open: Monday - Saturday 9am -8pm.

You can contact your local team in the following ways:  
Call us: on 101 to report a crime or 999 if it's an emergency.  
Email: [Chichester@sussex.pnn.police.uk](mailto:Chichester@sussex.pnn.police.uk)  
If you wish to report crime anonymously you can do so via [Crimestoppers-uk.org](https://www.sussex.police.uk/cp/crime-prevention/) or via the phone 0800 555 111.  
For further crime prevention advice please visit <https://www.sussex.police.uk/cp/crime-prevention/>

A belated Happy New Year to you all, and we trust you had a good and safe Christmas and New Year celebration. Welcome to the Fabulour February issue. (2022 already - I can remember when 2001 was science fiction...)

This month sees the start of our exciting new series, Around the County in 80 months. It is going to be a journey, and we hope you will stay with us through it all.

If anyone is going to send me Valentines cards, please make sure you put my name on the envelope - I don't want the boss opening them and thinking they are for her. 😊

We have now reached repetition station :

Would you like to sponsor the Selsey Life magazine? If not the full magazine, how about sponsoring a page for a month for £20.00? We may not be able to guarantee what page, it would be on a first come basis, but we would try to match you if possible. Is this of interest? Please email the Selsey Life in the usual way, [selseylife@btinternet.com](mailto:selseylife@btinternet.com).

We offer a six month subscription for the magazine for £18.00, including postage. Is it something you would like?

Please, wherever possible, do your best to support any of the local shops and venues that you can - you will miss them all when they are gone.

Thank you to all of you who are purchasing and reading the magazine, we are always happy to receive feedback. As always, if you have just picked the magazine up whilst in a queue or something and are not going to take it, please still consider a donation in the yellow pots, thank you

**Lloyd Bank sort code 30-98-97, account number 43314960**

Our 5% offer for anybody who gets us new advertisers still stands.

We are happy to receive any feedback, good or bad, along with any articles and/or photos for inclusion. Tell us what you want to see.

As ever, thank you to all of our contributors and advertisers in these difficult times.

Our next issue is due Friday 4th March 2022 - see you then.

**Eggs for sale.**  
**£1.50 per half dozen.**  
**42 Beach Road, Selsey**  
**Available from red box on front of house.**



**TERRY & IRELAND Ltd**  
Plumbing and Heating Engineers  
Installations & Repairs  
Ceramic floor and wall tiling  
Complete bathroom installations  
Disabled / wet rooms / tiling and all small jobs  
46 High Street Selsey  
**01243 602827 / 0783 670 0863**

Est 1962  
Free  
Estimates



**Amanda the Female Gardener**  
**07534 364943**  
Gardening and any odd jobs in the garden and around the house, including cleaning in the home.  
Available in February and March for doing shopping, and taking people on appointments to doctors/hospitals

- 1) For which 1983 invasion was "Urgent Fury" the code word?
- 2) Which 17th century agriculturalist lent his name to a pop group?
- 3) Complete the saying: "To err is human, to forgive..."
- 4) On which river is Philadelphia?
- 5) Which American author wrote Main Street?
- 6) When is St. Swithin's Day?

#### This month is a quick competition.

We have on offer two tickets to see Mike Christie at the Town Hall on 27th February. To be in with a chance of winning this, find the Selsey Seagull hidden somewhere in this magazine (NOT this page) and then complete the coupon below.



Coupons are to be posted in one of the two competition boxes, either at Raycrafts, 119 High Street, or Pretty's Newsagents at 4 Orchard Parade. One entry per coupon, copies not accepted.

(You can enter any competition multiple times, but you will need a separate coupon for each entry.)

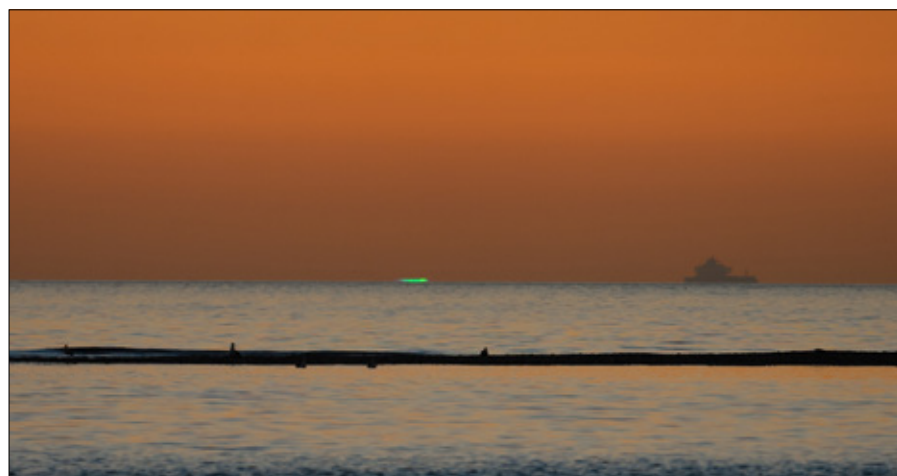
**The competition closes on Friday February 18th at 10.00 am.**

(If you do not win you will still have time to book your tickets). Good Luck, and we thank Donna Johnson for the kind prize this month.

Last month the seagull was on Amanda's advert on page 23, and the winner of the book is Adrian Smith, drawn by the Boss.

The elephant was on the Santa quiz on page 32, and the winner of the brand new donated jewellery was Pauline Creane, again drawn by the Boss.

We trust they both enjoy their prizes.



**Green flash 17 January 2022**  
Photo reproduced by kind permission of CoastalJJ. Photo must not be reproduced or printed elsewhere without their express permission.

Name : \_\_\_\_\_

Contact phone number and full address: \_\_\_\_\_

I found the seagull on: \_\_\_\_\_

One entry per coupon Copies not accepted





Medmerry Primary School proudly opened their new library at the end of 2021. School Councillor Bella Cooper in Year 4 provided a write up of the exciting day.



Ali Sparkes opening the library

### Medmerry School's New Library

At the end of November, an author called Ali Sparkes came in to open our new library. All the school councillors got to help and it was great talking to her – although a bit nerve racking! It was a very special time for Medmerry, but great to meet a real-life author. Ali said something very kind about our library:

*"When I've been to other schools to open libraries I've usually seen two chairs with a stack of books. This library is absolutely amazing."*

Ali spoke to all the children at assembly about her career and how she began to write her books and some of the problems in getting them published because they always sent back a mean letter!

The new library is like an enchanted forest, with seats tucked into the walls, and stacks of books everywhere. We all feel very lucky to have such an awesome place to read!

Words by Bella Cooper, Year 4, age 9



School council



It's important that people continue to follow government advice and guidance  
#KeepWestSussexSafe



Have you ever thought about Volunteering?

Do you have a couple of hours on a weekend that you could give to the RNLI in our gift shop?

We would love to welcome you to our team.

If you are interested, please drop your details into the shop and our Manager will get in touch.



The RNLI is the charity that saves lives at sea.  
RNLI is a registered charity in England and Wales (1044044) and Scotland (SC015714). Registered in the Republic of Ireland (1044044).



## SELSEY MOBILE HAIRDRESSER

Ladies Gents & Children

10% discount on 2 or more booking in any 1 household

Over 30 years experience, good rates

Please call or message Cherry for details

07708952888



7) Which English football team's badge features a red rose?

8) What does E&OE stand for?

9) Who is the Denis in Anyone for Denis?

## Cloud Nine

### "CINDERS" What a success!

Well against all the odds Cloud Nine Musical Theatre's Christmas production of "Cinders", the Cinderella story, took place in those empty days between Christmas and New Year! Back at our previous home of "The Academy, Selsey", the show took on a new look with our first use of tiered seating, meaning even the smallest child had unbroken views of all the action!

Written specially for the group by Rebecca Townsend – who also directed the show, over 400 people came to laugh and shout their way through a couple of hours of excellent and fast moving panto fun. The lively cast gave their all to provide audiences with exciting dance routines, catchy songs and the usual pantomime humour.

Abbey and Mary Bensley (yes they are sisters!) wowed the audience as Cinders and Prince Charming. Colin Martin got everyone in the audience waiting for his every entrance as a cheeky Buttons while Josette Coulston was an equally lovable Dandini. The larger than life Ugly Sisters were magnificently played by Jeremy Graves and Charles Townsend with Maddi Butler Townsend as their mother, the Baroness, whose songs achieved standing ovations. Pete and Carol Driscoll and Roland Robinson completed the line-up of nobility with Lisa Bensley as a sparkling Fairy Godmother. Karen Amis and Lucy Bensley were the Broker's Men Mr Johnson and Mr Starmar and Malcolm Graves played the unlucky Court Jester. An enthusiastic all singing and dancing chorus of mice, waitresses and townsfolk completed the line-up.

We would like to thank the Academy Selsey for all their help and support, our Production, Technical and Stage crew for their tireless hard work but especially the wonderful audiences who supported us throughout the six shows.

Diary date: Watch this space for our next production, in association with SACOS Musical Productions, which will be "Kipps – the new Half a Sixpence Musical" which will be at The Academy, Selsey from 20-23 April.



Selsey is to welcome **Mike Christie**, who makes up one quarter of the operatic group, G4, as their baritone singer.

G4 shot to fame on the very first X Factor and continue to play to packed audiences across the UK, with their incredible harmonies and unique take on contemporary and popular music.

He also organises the Wight Proms, an outdoor music festival in Cowes, on the Isle of Wight, and has his own solo career when not touring with G4.

Mike is a wonderful entertainer who is looking forward to showcasing one or two of his own songs when he comes to the Town Hall on the afternoon of February 27th, with the closing date of his Valentine Tour.

This is the first time Mike has performed in Selsey and we are in for a real treat. Tickets and further details can be found on Mike's website: [www.mikechristie.co.uk](http://www.mikechristie.co.uk). Anyone unable to access the internet, please call Donna on 606629, who can help with tickets and queries



Seaside tranquillity and a warm welcome await you at Trenchley Manor



Enjoy peace of mind and a sense of belonging at Trenchley Manor Nursing Home. You can depend on our caring and compassionate team of specialist staff to cater for your every need. With our round-the-clock nursing care, you won't have to worry about a thing. Just sit back, relax and enjoy seaside living at our idyllic beach-front home.



Healthcare Homes

Call us on 01206 646646 for a reassuring chat with one of our advisors.

[healthcarehomes.co.uk](http://healthcarehomes.co.uk)





Firstly, let me wish you all a very Happy New Year!

Throughout the pandemic, our GPs have done a phenomenal job, continuing to provide healthcare within our communities, whilst also playing a massive role in delivery of the local vaccination programme. In our area, GPs have run vaccination centres in Midhurst, Petworth, **Selsey** and Tangmere, and most recently in Sidlesham, to help with the booster rollout, which I look forward to visiting soon.



In recent weeks, several people have written to me about some of the challenges they've faced in accessing GP appointments. More and more GPs are triaging patients by phone or video consultation to reduce face to face contact over the pandemic. I recently visited Southbourne Surgery to raise this concern and see how their new systems are working. Understandably, they, like many other GP surgeries are dealing with a vast increase in appointment requests as many people didn't seek medical treatment over lockdowns. Consequently, their phone lines are busy, with 70% of their patient roster calling each month. To ensure they can get to everyone, the surgery has recruited four new receptionists to handle the increase, as well as, bringing on a new care coordinator and two more GPs.

That said, the Government has been clear that practices should respect preferences for in-person appointments unless there are good clinical reasons. Understanding that may be easier said than done, we've invested £250 million into the Winter Access Fund to help GPs increase the availability of face-to-face appointments.

In other news, National Highways have now published their design report for improvements to the cycle route along the A259 between Chichester and Emsworth. I know many residents take a keen interest in the designs for this route which have been revised in light of the latest guidance and community engagement. There are so many benefits to be taken from sustainable transport and I'm continuing my work by highlighting residents' views and suggestions to those taking this project forward. You view the report online via West Sussex County Council's website: [www.yourvoice.westsussex.gov.uk/chichestertoemsworth](http://www.yourvoice.westsussex.gov.uk/chichestertoemsworth)

The campaign to end over-abstraction of the River Ems took a step forward - on a recent call with the Environment Agency (EA) I got confirmation on a new project will get underway this summer that will pump water back to the river during times of low flow to protect the habitats and wildlife that rely on the river. There is still more to do to protect the river long term – but this is a really positive step in the meantime and shows the power of working together to bring about change. I want to thank the community group Friends of The River Ems and, local Councillor Roy Briscoe for all their work on this important issue. I will continue to work on this until we are satisfied the River Ems is properly protected.

To get regular updates on my work in Westminster and around Chichester, sign up for my newsletter at [www.gilliankeegan.com](http://www.gilliankeegan.com).

Before Christmas I met with church leaders from across the district – who in many cases have led the community response during the pandemic and continue doing so with the rise of the new variant. Through organising daily calls to those living in isolation or delivering food and medicines to the most vulnerable, everyone is keen to keep the spirit of community-based support going, especially as we approached the festive season where a sense of community is most important. It was great to discuss their ambitions moving forward and where their assistance would be most impactful.

Another group of people who act as a lifeline to so many are the Selsey Community Forum, which is a one-stop support hub, helping people with everything from care provision, financial advice and accessing mental health support and much more. I dropped by to see Mike, Karen, and Nicola (a local GP) from the Care Shop team to talk about their work and see how our ambitions as a Government to develop a much more integrated NHS will benefit community-level services. Whilst in Selsey I also held a round table with the local fisherman and popped into the RNLI Lifeboat Station to say hello to the guys on duty. It was inspiring to hear about their recent operations, which covered everything from search and rescue to Mayday call outs. All in all, we are extremely lucky to have so many dedicated people who do so much to help others.

Gillian Keegan MP

- 10) In which US state is the ski resort of Aspen?
- 11) Which British newspaper was nicknamed "The Thunderer"?
- 12) What is a French high school called?
- 13) The film Schindler's List is based on which book?
- 14) Which English royal dynasty means "sprig of broom"?



# WE ARE URGENTLY LOOKING FOR HELPERS on Match Days

We are urgently looking for volunteers to help out on match days and nights! You don't need to join a committee to be a volunteer, but without more help we are struggling to manage on match days. We need people to retrieve stray footballs, occasionally man the entry gate, be security around the dressing rooms, help with nets and corner flags and generally assist before and after matches

Please get in touch if you have a couple of hours you can spare!  
Dickie Isted 07885 619849



**Around the World in 80 Days?**  
Forget it, come with us, we're going around the County in 80 months! Commencing at Worthing Pier and travelling clockwise we'll visit every city, town, village and hamlet connected to the 290 mile long border of historic Sussex. This epic journey – a full year in the writing - will appear bi-monthly with every stage capably illustrated by the over-qualified Jason. We'll arrive at Bognor's 'Birdman' Pier in 2023, through Selsey en route to the delightful Bosham in 2024, across the stunning South Downs to Liphook in 2025, past noisy Gatwick Airport to cross the Prime Meridian Line at East Grinstead in 2026, reaching glorious Rye in 2027, the magnificent white chalk cliffs near Eastbourne in 2028, before finally arriving back at Worthing Pier in 2029. It's a long long way but if you're up for the journey, then here we go!

**BORDERLANDS – Probing the Sussex Perimeter (stage 1)**  
  
From Worthing Pier to Worthing Pier long miles in between  
Right around the County's edge through seasons gold and green  
A wealth of scenic majesty as looming months unfold  
From nature's timeless landscape to man's both new and old  
  
Heene a one-time South coast name today barely survives  
But life within its cemetery positively thrives  
A wildlife haven prospers there the fading stones between  
While chained and padlocked gates ensure the place remains serene

Lost net from distant trawlers with cuttlefish entwined  
And remnants of a milkman's crate serve to perplex the mind  
Our careless contribution by wind and water worn  
For but a passing moment will the ageless sea adorn  
  
West Worthing 'twitchen' shortcuts lead us many different ways  
As we become enchanted by their narrow passage maze  
Eventually the lanes of Tarring pass beneath our feet  
Its strangely slender High Street width the centuries to cheat  
  
Most railway commuters dislike Durrington-on-Sea  
Owners Network Rail of course politely disagree  
The 'grimmiest station in the South' is what the masses claim  
But an architect dead sixty years can hardly shoulder blame  
  
That keyboard wizard Emerson grew up in Goring town  
He played 'em straight, played two at once, he played 'em upside down  
Once joined by Lake and Palmer though the sound seemed overblown  
Till sneering Punk Rock saw them off their welcome long outgrown

JOHN BYRNE 2021  
ARTWORK JASON BETON






**SELSEY WI**  
**INSPIRING WOMEN**

**Ladies of Selsey, come and join us at our next meeting.**  
**You will be made very welcome.**

**It will be on Wednesday 9th February at 1.45pm in the Town Hall. Our Speaker will be Frances Benham telling us all about "The Proms"**

**We will also be having a Silent Auction**



*If you would like more information, please contact  
Ann Jones 01243 607736 or Heather Coleman 01243 604603*



**SELSEY COMMUNITY FIRST RESPONDERS**  
**INVITE YOU**  
**TO A VALENTINES DAY TEA DANCE**



**CREAM TEA + PROSECCO +  
DANCING**  
**£10 PER PERSON**  
**MONDAY 14<sup>th</sup> FEBRUARY**  
**ST PETERS CHURCH HALL**  
**1:30pm to 4pm**

**PHONE JEAN FOR TICKETS :  
01243 763135/07790 510058**





Award  
winning care  
homes

Our highly trained care home teams are specialists in residential, dementia and respite care. With some of the highest care ratings in the UK, we're here to help you and your family at every step of your journey.

If you're considering care, call **Caroline** on **01243 882642** or email **caroline.thomas@careuk.com**

Trusted to care.

Home now open

Chichester Grange care home  
Donnington  
[careuk.com/chichester-grange](http://careuk.com/chichester-grange)

care UK

**Selsey u3a welcomes new members**

If you are no longer in full time work or raising a family - we call it your third age – Selsey u3a gives you opportunities to develop your interests, make new friends and have fun. Selsey u3a welcomes you whoever you are, wherever you live and whatever your circumstances.

u3a members make the most of life by continuing their creative, educational or social interests in a friendly and encouraging atmosphere.

From Walking to Talking, Current Affairs to Lunch Clubs – The choice is endless, and the decision about what to do is made by the members for the members. At the moment we have groups ranging from Current Affairs, Walking, French for Fun, Astronomy, World Cuisine and Medieval History, to Skittles and Sunday Lunch.

For a modest annual fee of £13, or £9.50 if you already belong to another u3a, you can join as many groups as you wish. Joining in is made easier when you're surrounded by others who have similar interests to you.

And once a month, on the fourth Friday, Selsey u3a invites members to a meeting where you can get together, chat and listen to some great speakers.

**If you would like to join us** (or would like further information) please telephone 07783 040407 or e-mail [info@selsey3a.org](mailto:info@selsey3a.org) or check our website [www.u3asites/selsey3a.org](http://www.u3asites/selsey3a.org) OR

**come along to our next Open Meeting on Friday 25th February 2022 at 1.30 for 2.00 p.m. at the Selsey Centre**

Our Membership Year starts at the beginning of April, but you can join any time that is convenient to you.

**Selsey's 4th  
Seed & Plant  
Swap**

Sunday 27<sup>th</sup> February - 11-3pm  
at The Bridge Support Centre  
behind Selsey Library, PO20 9EH

Share your spare seeds and plants,  
look for exciting new ideas for 2022!

Contact Paul on 07815 790770  
Organised by Selsey Community Forum

**Friends of Selsey Medical Centre (FSMC)**  
Charity No: 1013645

A Happy New Year from all of us at The Friends of Selsey Medical Practice.

We hope you've had a very happy time, despite the strange circumstances of the past year.

Our Medical Practice is one of the most important facilities available to us in Selsey. It's the first stop for most of our primary medical requirements. We have very high expectations of it in our moments of need.

The Medical Centre provides more than the basics of a wonderful service and we, The Friends, build on this wonderfulness to move it a bit further towards the perfection we long for.

Our Doctors identify areas of need at the surgery, such as blood pressure machines for patients' use, the annual hardware rental for information screens, an ECG machine with accessories and training package. It's the job of The Friends to raise the funds to purchase this equipment to give us patients the best possible experience.

While we appreciate all donations, large or small, we've found it most efficient to build a Membership of Friends who pay us a regular subscription, in reality an annual contribution towards the needs of our Medical Centre.

Unfortunately recently our numbers have dwindled to fewer than 400 and we seriously need more members. With over 12,500 registered patients to draw on our surgery's services at any time, this is a very small percentage of contributing members. We only ask for a minimum annual contribution of £5, but more is welcome and from more people!

We'll be doing a modest membership drive during 2022 and hope you'll be kind enough to support us by joining The Friends or perhaps re-joining.

The easiest thing to do is phone [01243 945263](tel:01243945263) and talk to Rosemary, our Membership Secretary, who will welcome your call!

TLH 02/22

**Did you know?**

The letter 'Q' was illegal in Turkey for 85 years



**REV. WILFRID HARRY BOURNE**  
**1897 – 1988**  
**PART ONE**

While I was browsing on the Internet I came across two newspaper articles for sale which appeared to pertain to Selsey and they concerned the Reverend Wilfrid Harry Bourne who was one of our Methodist Ministers. As I have researched several Church of England Rectors and Vicars, it seemed only right to redress the balance a little, not least because my paternal Grandfather was a Methodist Lay Preacher.

Before I embark on this journey, I must put it on record that I have had considerable assistance from his descendants, in particular Stefan Szulc, his grandson, who very kindly obliged me with his own potted history of our Minister.

Rev. Wilfrid was born on 30 January 1897 in Horsham into a Bible Christian family and was the eldest of three children. His birth was registered as Harry Wilfrid Bourne by his parents, Harry Thomas and Eliza Annie Bourne, née Marshall and it is this name which appeared on the 1901 census when they lived at Montier Terrace, Angel Street, Petworth. His father was a Grocer's Clerk and his wife is recorded as Annie. Sister Margaret (known as Maggie) was 2 years old, brother Albert (known as Little Bert) was under 6 months while Harry himself was 4 years old. Intriguingly, the 1900 record for Petworth Infants School had him as Wilfrid with his year of birth as 1896. It is thought, by the family, that the reversal of names may have been to avoid confusion with his father.

By 1911 the family had moved to Chichester and were living at 17 Whyke Lane, Chichester. Here Wilfrid attended the Chichester Central School which is now the New Park Community Centre. At the time of this census he was 14 years old and a Grocer's Assistant while his father was a Baker's Clerk. His mother is recorded as Eliza and they had been married for 15 years. Margaret was at school but, sadly, Albert had died in 1906.

In one of his books, to be discussed later, Wilfrid describes his 'errands' which '*...often took me through the great cloisters of Chichester Cathedral. My hesitating journey was past the doors of the residences, within the cloisters, of a number of dignitaries. Polished brass plates gave their names and titles beneath massive knockers and by the side of tempting bell knobs. Usually there was another little brass plate as well, with the instructions, 'Do not ring unless an answer is required'. On one kinder door that I felt sure must be the home of a true father-in-God was a very different plate. It was not an instruction. It was an invitation of such breath-taking possibilities that I was often sorely tempted to interpret it liberally. 'Knock and ring,' it ran!*'

In 1915 Harry Thomas Bourne was a Shopkeeper living at 87 Grove Road, Chichester and it is from this address that Wilfrid enlisted on 9 December, aged 18. We are fortunate to have this information as many of the Army records from this time were burned. Indeed Wilfrid's record is decidedly charred round the edges. This was thanks to an incendiary bomb at the War Office Record store in Arnside Street, London. About two thirds of the original 6.5 million soldiers' records were ruined, with the remainder largely charred or water-damaged.



This version of events was confirmed by his Casualty Form along with the information that he was serving with the 16<sup>th</sup> Norfolk Regiment. Stefan added that he was initially in a Canadian Field Hospital. But more of this later.

Wilfrid enlisted as a Private with the Royal Fusiliers at Chichester Barracks. His religion was shown as Congregationalist and his service no. was G27742. Between 23 July and 3 September 1916 the Battle at Pozieres took place in northern France around the village of that name during the Battle of the Somme.

The West Sussex Gazette of 24 August 1916 recorded that Wilfrid was wounded at Pozieres on 4 August. *'He was taking part in a night attack on an enemy trench when a machine-gun bullet hit him under the left eye, coming out at the bottom of the neck behind, and leaving a severe wound, the bullet being an expanding one. He is in hospital at Brighton.'*

The action on Friday, August 4<sup>th</sup>, was the final attack at Pozieres. *'It began at nine in the evening, when the light was still strong. The Australians attacked on the right at the Windmill, and troops from South England on the left.'*

(Taken from *The Battle of the Somme* by John Buchan (author of *The Thirty-nine Steps*)© John Buchan, 1917)

*Photo courtesy of Stefan Szulc.*

24842

Casualty Form - Active Service.

Regiment or Corps 10th (P) NORFOLK REG

Regimental No. G-2742 Rank Pl Name Bourne, L.

Enlisted (a) 98 Terms of Service (a) 5 of 10 Service reckons from (a) 23-10

Date of promotion ( ) Date of appointment ( ) Numerical position on ( )  
to present rank ( ) to lance rank ( ) roll of N.C.Os. ( )

Extended ( ) Re-engaged ( ) Qualification (a)

Report		Ground of promotions, reductions, transfers, casualties, etc. during active service: as reported on Army Form B. 213, Army Form A. 26, or in other official documents. The authority to be quoted in each case.	Place	Date	Remarks (taken from Army Form B. 213, Army Form A. 26, or other official documents).
Date	From whom received				
5.8.16	300CS 22EH.	JD.9TH.BN.'IN THE FIELD 17-7-16 Wounded in action Adm. RSW II (III) Transferred to England RSW face & neck	Field Camiers	5.8.16 15.8.16	ED1355 CAT 5/6 WJ083 Newhaven Major Officer of Records Infantry Section New Army. 3rd. Echelon.

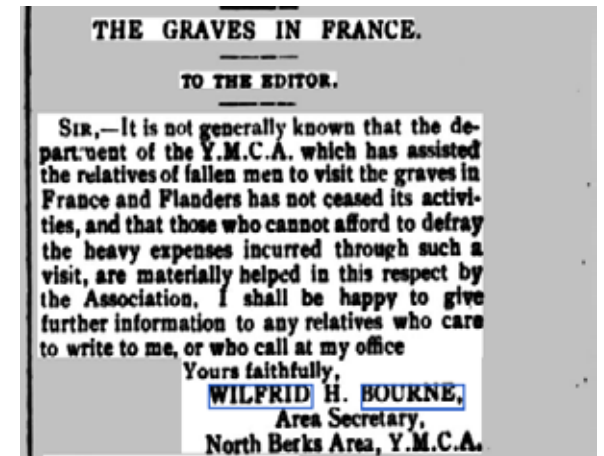
On 9 July 1917 Wilfrid was discharged from the Army in Nottingham while serving in the 5<sup>th</sup> Battalion Labour Corps. He was 20 years old, his conduct had been Good and, again, his Army documents confirmed he was Wounded in Action in the face and was '*No longer physically fit for war service*'.

We also learn that he was 5ft 11½ inches tall with blue eyes and fair hair. His Intended Residence was 87 Grove Road, Chichester. Our boy was coming home.

The Chichester Observer of 5 March 1919 published a letter from Wilfrid H Bourne headed CHICHESTER WAR MEMORIAL in which he was surprised to learn that a Councillor seeking to erect public baths in Chichester as a Memorial received very little support. He also commented that *'Visitors are surprised when they learn that Chichester has no public library, etc. but when they are told that it has no public baths, they are disgusted!'*



He goes on to tell of his involvement with the Red Triangle Club and here a small digression is called for. The Red Triangle Club was to be found at the Young Men's Christian Association (YMCA), Greengate Street, Plaistow, Newham, London and was the sports orientated section of the YMCA.



A letter to the Berkshire and Oxon Advertiser of 11 November 1921 was signed Wilfrid H Bourne, Area Secretary, North Berks Area, YMCA.

*This photograph is entitled YMCA, Greengate Street, Plaistow.*

© London Borough of Newham Heritage Service

Reproduced here through the kind offices of Jess Conway,  
Archivist.

A newspaper article published in the Hampshire Advertiser of 6 September 1930 mentions that '*he went to Mildmay College London, for economics, philosophy and literature*'. I took this up with Sarah Hollingdale, Methodist Heritage Officer,

Methodist Church House [www.methodist.org.uk](http://www.methodist.org.uk) telling her I could find no trace of this college to which she replied 'Re Mildmay College, I hadn't heard of it either! My best bet, having done some research, is that it was part of the developments by Mildmay Estates in Islington' Thankfully Rev. Ian Suttie, Selsey's Methodist Minister, consulted the Dictionary of Methodism in Britain and Ireland (2000) which confirms Rev. Wilfrid's attendance at the college and, having done my own research, I consider that Sarah's 'best bet' is actually the right answer. Further research indicates this was in 1917. Stefan informed me that 'after training at Victoria Park College in Manchester in 1921, he entered the United Methodist Ministry in 1922'

The newspaper articles agree on one thing – that Rev. Wilfrid entered the Ministry in 1922 from Sandown IOW. In that same year he was posted to Whitehaven, Cumberland (as it was then). The United Methodist Church was founded in Whitehaven in 1836 and was situated in Catherine Street. In 1932 the United Methodists joined with the Wesleyan Methodists and the Primitive Methodists to form the Methodist Church of Great Britain. It closed before 1938 and then became a Salvation Army Citadel.

On 20 March 1924 the West Sussex Gazette published a report of a lecture given to the Cumberland Nature Club at Cocker-mouth by the Rev. Wilfrid H Bourne. He had been invited to give the annual travel lecture and, as a native of Sussex, he chose a 'Trip Through Sunny Sussex' and illustrated his talk with projected photographs. There followed details of the topics he covered, he received an enthusiastic reception and '*was earnestly urged to come again and tell Cumberland more of that fascinating county, Sussex.*' And he did mention Selsey.

Perhaps this was a swan-song as he moved to United Methodist Church, East Dereham, Norfolk in that same year which is where he met a young lady called Doris Margaret Deeker.



This photograph, taken circa 1925, is of East Dereham, United Methodist Church.

Doris Margaret Deeker, is the third from the left in the middle row and her husband-to-be, Rev Wilfrid Harry Bourne, is seated in the middle of the front row.

The plaque reads:

UNITED METHODIST CHURCH, EAST DEREHAM MISSION  
BAND 1925



The West Sussex Gazette of 12 August 1926 carried a report of their wedding:

*‘A pretty wedding took place in the United Methodist Church, East Dereham, Norfolk on August 3, between the Rev. Wilfrid H Bourne, son of Mr and Mrs H T Bourne, of Chichester, and Miss Doris Deeker, eldest daughter of Mr and Mrs Richard Deeker, of Hingham, Norfolk. The bride was given away by her father, and the bridesmaids were the Misses Beryl and Marjorie Deeker, sisters of the bride. The bride was charmingly attired in a dress of ivory crepe de chine, trimmed with silk lace; and the bridesmaids were dressed in blue crepe de chine, with bandeaux of forget-me-nots. The bride’s going-away dress was a two-piece suit of beige repp, with hat to match’.*

The Minister officiating was Rev. Albert Tattersall.

For the non-dressmakers among you, repp is a cloth woven in fine cords or ribs across the width of a piece, usually made of silk, wool, or cotton.



Just to clarify, a circuit is a grouping of local churches under the care of one or more Ministers.

This was, quite clearly, an extremely happy marriage as the Daily News (London) of 29 January 1930 carried this banner headline:



After a brief description of the rules it transpires that the newspaper was running a ‘Married Pals’ competition with not only £150 prizes but also a payment of £2. 2s. 0d for every story published and £3. 3s. 0d if the competitors sent in a photo of themselves and their spouses. Sadly, the picture of Rev. Wilfrid and Doris is too dark and grainy for me to show it to you and the whole of the appreciation he wrote is too long to reproduce here but should anyone want to read it in full, I can let you have a copy.

Later in the year Rev. Wilfrid hit the headlines in the Portsmouth Evening News and the Hampshire Advertiser. The headlines are, respectively, ‘MINISTER’S WAR RECORD – HIS AMAZING ADVENTURES’ and ‘FACING A FIRING PARTY – AND LEFT FOR DEAD ON FIELD OF BATTLE’. Again, we do not have the space to reproduce them in full and, again, I do have copies.

Rev. Wilfrid had transferred to Southampton and Eastleigh and the newspapers were interested in finding out all about him. According to the articles he was shot through the head and left for dead after being captured by the German Army. He crawled away to join the British lines whereupon he was arrested as a German spy, and sentenced summarily to be shot as his blonde hair and youth made the British suspect him of being a Saxon from the German lines. He was reprieved when his battered ID disk was found.

Here I must stress that the story is factitious (something contrived but based on fact) and first surfaced in a booklet/diary that Rev. Wilfrid gave to his sister Margaret and which is now in the possession of her granddaughter. However, the articles do contain much good information about his Life and Ministry.

And on this thrilling note, we must conclude the first part of Rev. Wilfrid’s story, Part 2 will be in next month’s Selsey Life.

This article is the intellectual property of the author and may not be copied or used in any way without her written permission.



Here is a stunning group photograph of, from left to right, Best Man Cliff Carter, his wife Beryl, Rev. Wilfrid, Doris and Marjorie, aka Madge.

Also in 1926, Rev. Wilfrid and Doris moved to Jesmond, Newcastle-upon-Tyne where they lived at 5 Benton Terrace. A later newspaper records that Rev. Wilfrid had the Superintendency of the Central circuit in Newcastle for 4 years. Their daughter, Eileen Winifred, was born on 28 January 1929.

©Ruth C Mariner  
01243 604698  
[ruthm@ruthcmariner.co.uk](mailto:ruthm@ruthcmariner.co.uk)

Acknowledgements:

Stefan Szulc, Rev. Wilfrid’s grandson, for his time and energy in supplying me with notes and photographs for this article. He also liaised with other members of the family on my behalf.

Rev. Ian Suttie, Selsey’s Methodist Minister, for helping me out with information and advice.

Sarah Hollingdale, Methodist Heritage Officer, [www.methodist.co.uk](http://www.methodist.co.uk) for her detailed email on from whom and from where I can get information

Jess Conway, Archivist, [www.newham.gov.uk](http://www.newham.gov.uk) for helping me with the correct attribution and provision of the photograph of YMCA, Greengate House, Plaistow

David and Carol Dixon for setting me on the right path in the first place

West Sussex Gazette and Chichester Observer David Philip on behalf of Copydesk Sussex, [Copydesk.sussex@jpress.co.uk](mailto:Copydesk.sussex@jpress.co.uk) [jpimedia.co.uk](http://jpimedia.co.uk)

Berkshire & Oxon Advertiser – I have been unable to confirm whether or not this publication still exists, despite extensive research.

Hampshire Advertiser ceased production 1940

Daily News (London) ceased production 1930

Portsmouth Evening News republished courtesy of The News, Portsmouth. Editor Mark Waldron.

## In the Garden

our monthly guide to gardening - In memory of Giles Peare

### Jobs for February

Clematis that flower in winter and early spring can be left to their own devices but those that bloom in late spring and early summer now need to be pruned lightly remove all thin and overcrowded stems cutting them as low down on the plant as possible.

Tie in the remaining stems to the plants support as these will produce flowers from the fat green buds along their entire length.

Check the pH of your soil with a test kit which will tell you if its acidic or alkaline. While some plants tolerate a wide range of soil conditions, others have specific requirements. Soil can be made more alkaline by adding lime but while it is technically possible to make soil more acidic by adding sulphur the huge quantities required would make it impractical for all but the smallest areas. Soil testing kits are simple to use and are available in most garden centres and from various online suppliers.

Unlike Globe Artichokes , Jerusalem Artichokes have edible root tubers which are tasty and quite easy to grow. They make reliable wind breaks, plant tubers in well manured soil 4" - 6" deep 18" apart in a sunny site. Plant vertically with scarred end facing downwards.

Remove some flower buds to retain energy in the roots.

Turn compost heaps now while they are relatively wet and cover over with bits of old carpet or other material to help maintain the heat.

### Tip Top Tips

- Finish pruning fruit trees and bushes, then sprinkle sulphate of potash around them.
- Clean greenhouse glazing to let in maximum light.
- Purchase seeds and compost in preparation for early sowings
- Give Snowdrops and crocus a weak feed to lengthen their flowering period
- Mist houseplants weekly with a fine spray of water to counteract the drying effects of central heating. Don't spray African violets.
- Dig vegetable patches and apply well rotted manure
- Sow sweet peas under glass later in the month for early and show winning blooms.
- Make an early sowing of broad beans and peas - don't grow onions close as the beans don't like it.
- Do grow celery next to beans for a bumper crop.
- Sow some Tomato seed in the greenhouse with heat
- Bring some sprays of forsythia indoors it will come into bloom in a vase in a warm room, also use winter jasmine.
- Ventilate greenhouses on a mild day and close when the temperature drops in the afternoon.

Give a posy of Snowdrops, Primroses and green leaves for Valentines Day they signify pureness of intent and sincerity.



We are still able to offer this old tat (Sorry - should read Selsey Mementos...) at the bargain price of only £1.00 - this includes the snow globes, mugs and genuine Olde English plastic shoe horn / backscratcher.

They are going fast (we keep forgetting to take them out of the boot of the car) so if you are interested in purchasing any of these please contact the Selsey Life on **07534 364943** for further enquiries.

Note: Collection only.

**Big discounts for large orders!**





Hello, everyone, and welcome (albeit somewhat belatedly) to 2022! Christmas and New Year were slightly odd ones again this year, although significantly better than 2020, so we should gain some reassurance from that. I do hope you and yours were able to enjoy Christmas and New Year, and let's hope that this time, we have finally turned the Covid 'corner' and are able to reclaim our freedom before the winter is out. This time last year we found ourselves plunged into further restrictions, when we thought things were looking up, so at least this year we can be more optimistic.

My regular two readers may well recall my previously mentioning my disdain that Christmas seems to land in the shops on the 1st September - as soon as the children are getting ready to go back to school, we are bombarded with all things Christmassy. This is bad enough, but even before 12th night, I spotted various items of Easter confectionary in the shops - this is seriously taking marketing to another level. I could just about understand the influx of red hearts and artificial roses for Valentine's Day, but Easter? Mad.

It seems to me that marketing companies are partly responsible for the speed at which time is perceived to hurtle by; this constant pushing forward to the next campaign for something or another means we are encouraged to project forward and never live in the moment. One of the issues the shops have to deal with, of course, is online purchasing; there's a growing market for online shopping, but after Christmas a lot of us go to shops bargain hunting, so as annoying as it may be, I'm sure there is method in their madness. I've done a bit of research into this, and it transpires that in 2015 only 24% of those under 35 made Easter purchases online, but in 2019 this had risen to 37%. Undoubtedly, these figures will have increased since then. A lot of us became used to purchasing what we needed online during lockdown, and there's no doubt that, for many, those habits have continued.

The best marketing campaigns, of course, are those that still 'stick' in our memories many years after because of very effective advertising. This was much easier when we all just watched TV, because the marketing and advertising gurus were sure to reach the vast majority of us. Someone once said 'advertising is the greatest art form of the 20th century' and whoever it was made a very good point.

Truthfully, TV commercials have provided us with some real entertainment, but with advertising now stretched across many social networks and platforms, TV ads just don't have the same impact that they used to. So, just for fun, let's go back in time to the decade which brought us the Spice Girls, Pogs and, of course, Tony Blair - the 90's.

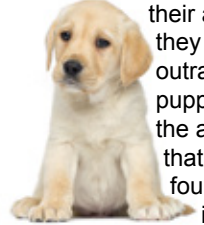
Anyone remember the advert for Tango - that highly coloured, sugar saturated fizzy drink, still beloved by many? The first advert was actually banned because it began a very strange 'happy-slapping' craze in the school playgrounds.....'you know when you've been tangoed!' It was, and is, utterly bonkers, but its reach was phenomenal. How many of us still remember the words to the Club biscuit advert? 'If you like a lot of chocolate on your biscuit join our Club....' a very clever play on words and an implicit implication that you weren't part of the 'in crowd' if you didn't consume these foil wrapped chocolate covered biscuits. I was always rather partial to the fruit ones, myself! (Be honest - did you quietly just sing that to yourself!)

My son was always partial to a tube of Chewits which was advertised using a slightly scary green dinosaur whose appetite could only be satiated by a chewit - again, absolute nonsense, but that's why we remember it...or maybe that's just me.... (No, me too. Ed.)



Whilst on the theme of confectionery - Penguin biscuits. P-P-P-Pick up a penguin, remember that one?

The Andrex puppy first made its debut in 1972, but it's the 1991 advert that probably consolidated its position as the nation's number one advertising mascot. We all remember the little labrador puppy tugging at the loo roll, trailing it through the house until there's nothing left, leaving a little lad in a somewhat unfortunate situation. Andrex, the manufacturers of said loo roll now always feature rather cute puppies in their advertising campaigns, due to the fact that when they didn't, the great British public was rightfully outraged. After all, who can resist a cute labrador puppy? Rather disappointing for the human beings in the advert, I assume, who would have to accept that they would be entirely upstaged by a small, furry, four legged friend proving, I presume, that cuteness is timeless.



Like a lot of youngsters in the 1990's my son was very influenced by marketing campaigns, and although I can't recall ever seeing an advert promoting the game, everyone knew what Pokemon was, it even became a TV series. It hit the UK in the late 1990's and rode right through to the 2000s, so it was a long, very successful campaign for the Marketeers. My son was ruthless in his quest for every card; very hard negotiating would take place in order to swap cards for the sought after 'shinies' and I suspect that whilst the Pokemon phenomenon simmered down, as all these 'crazes' do, there are still many homes who have boxes of cards packed and stored safely away. There has been an explosive rise in the value of a lot of these cards, so those who succumbed to the marketing campaign at the time, and kept the cards, may be in for a nice surprise. There are buy and trade groups all over social media and there seems to be an air of nostalgia surrounding the Pokemon legacy. I recall taking a bus ride right into the centre of Brighton, to a Pokemon shop, in order to buy my son the last card he needed for his collection - a 'shiny' called 'Charizard', a rare, holographic card with quite impressive artwork. I breathed very deeply when I bought it and negotiated the vendor down a bit because there was a tiny scratch on it. This card was kept 'rare' in order to make



sure that those collecting them would keep buying the packs. The upshot today, though, is that, depending upon which edition you have, a Charizard can be worth anything from a few hundred pounds to literally thousands. (Note to self: does my son still have his....?) I think that's a pretty good example of a successful campaign!

Marketing is certainly important because it's an effective way of engaging customers, and building a good relationship between the business and potential consumers. Higher sales will translate into job creation, expansion, tax revenue and, ultimately, economic growth -but, I still can't quite persuade myself to buy a Creme Egg in December!

Have a good February, everyone. February is a very unpredictable month, weather wise and, it's not unknown for the white stuff to put in appearance so wrap up, keep warm and take care.

Donna

[donnajohnson279@gmail.com](mailto:donnajohnson279@gmail.com)



# Your lifestyle, your way at Care UK

At Care UK we deliver award-winning care and we put your quality of life at the heart of everything we do.

When you join us for residential care at Chichester Grange our team learn all they can about your personality, preferences and wishes so that they can create a care and lifestyle plan tailored to your unique needs. Here you can live life in the way you choose, and always with the best care.

## Something different each day

Our Lifestyle team are dedicated to making each day fulfilling and fun, whether you like to help with light tasks around the home, enjoy getting out and about on outings, or love to experience live entertainment. We organise a variety of daily group and one-to-one activities too.

When you join us at Chichester Grange you're welcome to continue enjoying lifelong hobbies and even discover new interests. We'll introduce you to likeminded people so you can make new friends. And how about taking part in activities

with local groups and schools? It's all possible at Chichester Grange.

## Everything you need under one roof

Chichester Grange is a new, purpose-built care home where every luxury has been thought of. The home has a café, bar, hair salon, cinema and lovely landscaped gardens all waiting for you.

Is there a wish or goal you'd like to achieve? Hang your wish on our wishing tree and we'll do our best to make it happen!

Recently, residents of Chichester Grange have been enjoying everything from music and movement classes to baking sessions and animal therapy. Reminiscence-themed activities help to spark happy memories, while dancing, yoga and gardening support residents to stay fit and active.

Our kitchen team, led by Head Chef James, has been serving up

delicious and nutritious dishes. When you join us, James will meet you to learn all about your likes, dislikes and dietary needs. He'll ensure your favourite dishes are always on the menu.

Make sure you 'like' us on Facebook to keep up-to-date with the latest from Chichester Grange.

## Here for you

At Care UK, we have more 'Outstanding'-rated homes than any other provider, and in the last three years have won more awards than any other. Discover why over 6,500 families trust us to care.

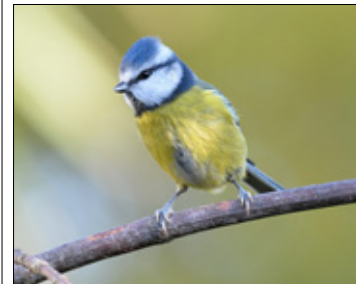
To find out more about residential care at Chichester Grange please call us on **01243 884644** or email [caroline.thomas@careuk.com](mailto:caroline.thomas@careuk.com)

**Chichester Grange care home**  
**Grosvenor Road,**  
**Chichester PO19 8FP**  
**[careuk.com/chichester-grange](http://careuk.com/chichester-grange)**



## Sexton beetles: subterranean corpse-disposal blues by Michael Blencowe of the Sussex Wildlife Trust

"Now, you got a corpse in a car, minus a head...take me to it." In Quentin Tarantino's movie *Pulp Fiction*, Winston Wolf provides a professional clean-up service for two incompetent hitmen when they have a little 'problem' that needs solving urgently. Hopefully, illicit corpse disposal isn't a regular dilemma for readers of this magazine - but in the natural world death, disposal, decay and decomposition are vital, constant processes which recycle the nutrients that keep our planet functioning. This clean-up duty is undertaken by a cast of unsung underworld characters. Bacteria and blow-flies, fungi and foxes, worms and woodlice all put their tendrils, talons, mandibles and molars to the task. But if you want a corpse removed efficiently and cleanly you had better call in the professionals: the sexton beetles.

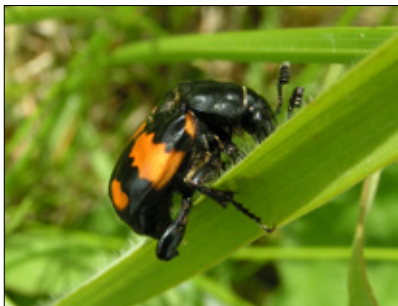


Blue Tit (c) Bob Eade  
Sussex Wildlife Trust

The sextons are members of the family Silphidae. At about 3cm long they are amongst the heavyweights of our county's 3,000 beetle species. Some sextons can be identified by their lurid orange wing-cases; a hi-vis jacket befitting a worker at the scene of a tragedy. Now, let's say you've got a dead blue tit in the back yard. Its little soul will have winged its way to that great peanut feeder in the sky and now it's time to return its earthly body back to the soil. Sextons, armed with super-sensitive chemoreceptors in their clubbed antennae, can detect the sweet smell of death from a mile away.

The male flies in first and assesses the scene. First job - call for backup. He secretes a stink from his rear end to lure in a female and his partner arrives. Next job - secure the corpse. The beetles start beetling around the blue tit, stripping off the feathers. But - phew-wee! That smell will soon be

luring in every fly in the neighbourhood and the sextons don't want to draw attention to their work. So, they baste the body with their antibacterial and antifungal chemicals, slowing down the decay and preventing the pong. Now the sextons live up to their name. Working together, they dig a grave and line it with feathers. The corpse is tenderly lowered down into the earth. It's here, in this cosy crypt, that the sextons will raise their family. Eggs are laid and develop into hungry larvae which, unusually for an insect, 'beg' for food and are fed by their devoted parents. The bird's body is slowly stripped of flesh and reduced to a simple skeleton. After pupation, new sexton beetles emerge from the soil and fly away, perhaps to find their own corpse or to become food for birds themselves. No eulogy, no flowers, yet it's still a dignified, life-affirming send off. So, when it's my time to go, just drag me into the garden and let the sextons do their job.



Sexton Beetle (c) Richard Burkmar  
Sussex Wildlife Trust



Sexton Beetle (c) Derek Middleton  
Sussex Wildlife Trust

**Sussex Wildlife Trust is an independent charity caring for wildlife and habitats throughout Sussex. Founded in 1961, we have worked with local people for over half a century to make Sussex richer in wildlife. We rely on the support of our members to help protect our rich natural heritage. Please consider supporting our work. As a member you will be invited to join Michael Blencowe on our regular wildlife walks and also enjoy free events, discounts on wildlife courses, Wildlife magazine and our Sussex guide book, Discovering Wildlife. It's easy to join online at [sussexwildlifetrust.org.uk/join](http://sussexwildlifetrust.org.uk/join)**

### RSPB Events for February 2022

#### Zoom Meeting

Thursday 10 February

Matt Eade, Naturetrek Tour Leader – 'Papua, New Guinea' at 7.00 pm

Zoom talks are free to all RSPB Chichester Local Group members and £4 each to non-members. Places are limited, so please book your place in advance by contacting Rob Yarham - email: [chichesterbirds@gmail.com](mailto:chichesterbirds@gmail.com), tel: 07545 376074

#### CHICHESTER

Thursday 24 February

Illustrated Talk by Sara Frost, Naturetrek Marketing Manager and Tour Leader, on 'St Kilda', to the Chichester Local RSPB Group at The Pallant Suite, Masonic Hall, South Pallant, Chichester, PO19 1SY at 7.30 pm. Entrance members £2-50/visitors £5 07545 376074 wheelchair access

### SUSSEX WILDLIFE TRUST February 2022

No planned events at present

### Chichester Conservancy Volunteers February 2022

PETWORTH Sunday 6 February  
Conservation – Woodland Management with Scott Robertson of the Chichester Conservation Volunteers on Ebernoe Common. Meet at 10.00 am 01243 552113 or 07722 025339

SINGLETON Sunday 13 February  
Conservation – Chalk Downland Management with Rob Eadie of the Chichester Conservation Volunteers on Levin Down. Meet at 10.00 am. 07776 150863

PETWORTH Sunday 20 February  
Conservation – Woodland Management with Alan Walker of the Chichester Conservation Volunteers on the Furze. Meet at 10.00 am 01243 825091 or 07539 090509

SINGLETON Sunday 27 February  
Conservation – Chalk Downland Management with Rob Eadie of the Chichester Conservation Volunteers on Levin Down. Meet at 10.00 am. 07776 150863

#### Did you know?

There are more plastic flamingos than real ones in the USA

### The last of the winter atmosphere

Nothing beats the atmosphere on a saltmarsh in winter, and February is the last month to see, hear, smell and even feel the saltmarsh at its atmospheric best here at Pagham Banks and the North Wall path.

At low tide, the dark mud may look (and smell) bitter and unwelcoming – but look again. Scattered across the mud are the tracks of Pagham Harbour's birds, perfect footprint after perfect footprint, retelling the journeys of curlews and dunlins.



Curlew

On some days the dark mud does not look dark at all, but a silvery blue as the sun bounces off it. In the wintery evenings, you can see golden and sometimes rosy sun rays bursting through the clouds as you look towards Sidlesham, almost beckoning you for a hot chocolate at the Visitor Centre.

At this time of year, make sure there is a spare pair of gloves in your coat pocket, as walkers are often scoured by the wind on North Wall as it sweeps past the exposed path. The wind whistles as it passes through the reeds on the north side of the bank, blowing away your cobwebs as it does.

Alongside the whistling wind, listen out for the melancholy call of the curlew, as it drifts over the mud and the water. The curlew's eerie 'cur-lee' is an iconic sound of British wetlands and moorlands, as the curlews breed on boggy ground and damp pastures. The UK is home to a quarter of all Eurasian curlews, surely underscoring the importance that lies within our saltmarshes, wetlands and natural meadows.

The curlew is a gorgeous bird and can be seen sifting through the mud on the south side of the path at low tide. A curlew's bill is as long as its legs, with a downward curve at the end. This is the curlew's cutlery, acting like tweezers or chopsticks in the mud as the bird searches for a worm. The Eurasian curlew's species name *arquata* is the Latin word for archery bow, referring to the shape of the curlew's bill.

To soak up the last of the winter atmosphere on Pagham Harbours saltmarshes, take a stroll along the North Wall, accessible from both Pagham and Sidlesham and don't forget to drop in to the Visitor Centre on the B2145m just north of Selsey for a warming cuppa.

[www.rspb.org](http://www.rspb.org)

Let's give nature a home

Meerabai Kings

### RSPB Pagham Harbour & Medmerry

March 2022

**Saturday 5 March, Bird Watch: Bird Watch: Signs of Spring!**

Would you like help finding and identifying the birds of RSPB Pagham Harbour? Join our friendly guides on the reserve as we look for waders, ducks and geese, which will soon be heading home again to the far North to breed, as well as perhaps the first of some rarer migrating birds! Our guides will be at Ferry Hide, ask for directions at the Visitor Centre.

**10am–1pm. Free event.**

**J.W Smith  
CHIMNEY &  
LOG BURNER SWEEP  
07769211143  
SERVING  
W.Sussex & Hampshire**

#### COPYRIGHT WARNING

No part of this publication may be copied or reproduced, stored in a retrieval system or transmitted in any form or by any means electronic, mechanical, photocopy, recording or otherwise without the prior written permission of the publisher ©2022. Selsey Life Ltd

## Care Home ~ Home Care



**Sussex Grange**  
Luxury Residential Care Home  
&  
Personal Home Care



#### DAY CARE:

Warm & friendly welcome  
Available 7 days / week  
Flexible timing

For more information  
call:

**01243 60 62 62**

#### RESIDENTIAL CARE HOME:

- Close to shops and seafront
- Carers on duty 24 hrs / day
- Delicious home-cooking
- All bedrooms en-suite
- Large private gardens

14 Vincent Road, Selsey

#### PERSONAL HOME CARE:

- The help you need, when you need it, in the comfort of your own home
- We can help with personal care, medication, cleaning, shopping, etc

[www.sussexgrange.co.uk](http://www.sussexgrange.co.uk)



## The Write Zone with Tara Lennon



'This is hopeless,' muttered Kate. 'Nope, nope...er, no.'

'I thought he looked quite nice,' remarked Alice cautiously. Kate shook her head emphatically.

'He's too short. I need a man over six feet tall.'

Alice rolled her eyes. 'You're a height-fascist. Her gaze settled on a well-dressed man sitting at the bar. 'What about him? The one in the cap? Looks a bit like Jude Law, don't you think?'

Kate twisted in her seat.

'He's very good looking. Bet he's waiting for someone.'

'He might not be,' Alice urged. 'Go get a couple more drinks and talk to him.'

'What should I say?'

'I don't know! Make something up. Just get off your phone and ... talk!'

'You're not helping,' Kate insisted. 'Anyway, I like texting people. It's safe.'

'It's boring. What happened to meeting a real person to see if you get on with them?'

'That comes later, after the texting, when you've found out they're not a weirdo or an axe murderer.'

'I doubt there's many axe murderers advertising for their soulmate on a dating site.'

'You can't be too careful. You get a feel for a person in their messages. If I was in the pub and someone was chatting me up, I wouldn't just stand there making small-talk if I didn't like them or they were boring. I'd look at my watch, say 'gosh, is that the time, I have an appointment, must go.' Same with messaging someone.'

'You've got a point,' Alice acquiesced. I got lucky with Andy.'

'Yes, you did. Not many people meet their soulmate on holiday.' Alice smiled, sipped her wine. 'You never know when you'll bump into yours.' Kate grunted, picked up her phone again. 'What about this guy? He's my age.' She turned her phone so Alice could see.

'He looks nice.'

'Uh oh. He's a no.'

'Why, what's wrong?'

'Look at this picture. He's got tattoos of snakes all the way up his back and neck.'

'Oh.' Alice's mouth snagged downwards. 'Not your type.' 'What about this one?'

Kate's head tipped as she pondered. 'He's got a nice smile. Why don't you just message him and say hello?'

'Maybe I should just wait and see if he likes me too.'

'You're overthinking it. You just said the whole point of internet dating is that you message people to find out who you want to talk to.'

'I know that. I just want to keep my options open.'

Alice shook her head in despair. 'There is no pleasing you.' Kate kept scrolling. It was beginning to feel like a catalogue of disappointment.

'He looks gorgeous he's but too far away. I need spontaneity. And why's this guy holding a fish? This guy's in love with his own chest.' Kate closed her phone, put it face down. 'I'm going to be single forever,' she moaned. Alice gazed at her best friend fondly.

'Stop worrying! You're funny, you're bright, you're the most caring person I know. Someone out there is going to meet you and feel like he won the lottery.'

'That's very sweet of you, but how am I going to find him?' Kate stared at her phone accusingly.

'You've just got to be patient and determined. That's internet dating for you: it's like looking for a needle in a haystack.'

'It's going to take forever.'

'Not necessarily. Anyway, why are you rushing?'

Kate looked mournful. 'I just don't want to be on my own for Valentine's Day.' Alice reached across the table and squeezed Kates's fingers.

'If you're on your own on Valentine's Day, you'll have the best company ever: you.' Kate took a deep breath.

'Thank you. I'll raise a glass to that!'

'See, it's not all bad.' The friends drank in unison.

'Excuse me, ladies?'

Kate and Alice looked up. The man who'd been sitting at the bar was now standing next to their table. Kate was immediately struck by the warm brown gaze under the brim of his cap. Flustered, she straightened, tucked her hair behind her ear, crossed her legs, and smiled brightly.

'Hi,' she replied. She was rewarded with a smile. 'My name's Alex,' he told them. 'Sorry, I didn't mean to eavesdrop. I couldn't help overhearing what you were talking about. I'm in the same boat. Internet dating, I mean.' He smiled at Kate. 'Would you mind if I join you?'

'No, of course not,' Alice chimed. 'Alex, this is Kate.'

'Hi, Kate.' Alex sat down. Alice smiled at both of them, picked up her bag and slung her coat over her arm.

Kate's eyes widened. 'You're not going, are you?'

Alice smiled at her. Three was definitely a crowd. She glanced at her watch. 'Gosh, is that the time, I'd better run for my appointment.'

*Tara*

[tara.lennon@outlook.com](mailto:tara.lennon@outlook.com)

  
**Carers Support West Sussex**  
for family and friend carers  
Local charity Carers Support West Sussex reaches ONE MILLION POUNDS milestone of additional annual income for unpaid family and friend carers through its Carer Benefits Advice Service.

Carer Support West Sussex (CSWS) CEO, Sonia Mangan explains:



"One of the realities for many unpaid family and friend carers is paying bills and managing money.

Indeed, a recent survey found 68% of carers regularly use their own income or savings to pay for care or equipment for the person they care for.

We're here to help, so we partnered with West Sussex County Council to help carers understand and secure any financial support they're entitled to.

We're absolutely delighted that, to date, we've been able to help 484 West Sussex carers find the financial support they're entitled to, since April 2021.

This is a free service for carers. All they need to do is register with the charity, which they can do on the via our response line or by email or the chatline on our website.

Then we can make sure carers are getting all the benefits they're entitled to, and, if they're not yet, help them apply for further funds.

So far, we've managed to help carers with things like Carers Allowance, Personal Independence Payment, Disability Living Allowance, Attendance Allowance, Universal Credit, Pension Credit, Housing Benefit, Council Tax Reduction, Contribution-based Jobseekers Allowance and Employment and Support Allowance (New style ESA and JSA). "

Lack of monies causes carers stress, and many have told us the support from this service has significantly reduced their anxiety. So, we'd urge carers to contact us and see whether there's some financial support available.

It'd be fantastic to have helped find another MILLION POUNDS additional annual income for unpaid family and friend carers by the end of 2022."

[www.carerssupport.org.uk](http://www.carerssupport.org.uk)

Registered charity number: 1123359



### Did you know?

'The Just Missed It Club' was set up for people who almost sailed on the Titanic.

Two weeks after the Titanic sank, the club had 118,337 members.

Jenny, the ship's cat on the Titanic, did not survive the sinking.



## Selsey Cancer Relief Fund



# JUMBLE SALE



Books, Bric a Brac, Collectables and Clothes



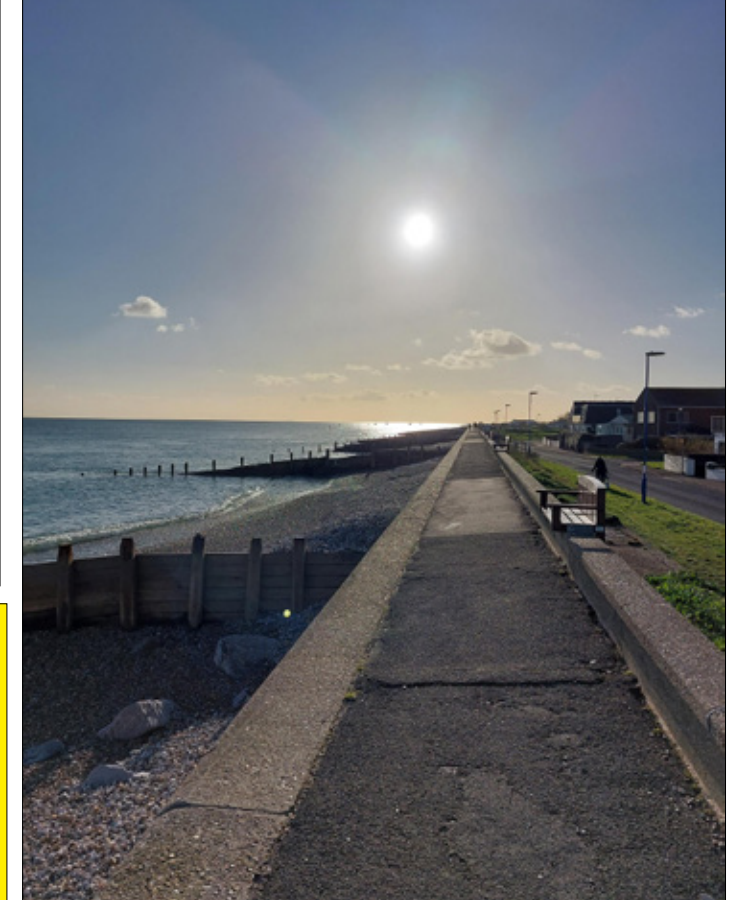
**SAT 5<sup>th</sup> Feb**  
**09.30 - 12.00**



**St Peters Church Hall**

**Entrance 20p**

Dennis Wheeler



### Did you know?

Vegetables are four times healthier than fruit.

- 15) Whose name is associated with the 1870 Education Act?
- 16) Which three rugby countries compose the Tri-Nations?
- 17) What is the capital of Nepal? (NOT NI)
- 18) In opera, what is a performer who doesn't sing called?

**PLEASE NOTE LAST DATE FOR SUBMISSIONS FOR ENTRY INTO NEXT SELSEY LIFE IS 16TH FEBRUARY**



## The Story so far

We were living in Milton Keynes with a young child and I worked for several large companies including Abbey National and Unisys doing administrative work and Danny was a director/shareholder in a group of catering companies that were the largest in Europe in their field.

After some long talks about the direction our life was going, Danny and I decided to up sticks and move to the coast, we put our house up for sale and we to East Wittering in West Sussex, we took a lease on a shop with a flat above and moved in on 01-11-96 (our house did not sell until July 97 so we had to tighten our belts for a while).

We started a sandwich delivery round from the flat and spent all our spare time refurbishing and transforming the shop into a Café which we opened Aug 27th 1997 and there we proved to be ahead of time as we were, to our knowledge, the first and only NO SMOKING Café in the UK, long before any smoking ban became law.



We spent four years in the Café and running our sandwich delivery but found it hard to get staff to keep the Café open so in the year 2000 we decided to sell up and move along the coast, we bought a house in Selsey and ran our sandwich delivery service from home.

We then sold our Sandwich round and van and had six months off for health reasons, from here we bought another specialist sandwich van (one of the first in the UK) and started another sandwich round in Portsmouth, then sold that and then started another and another etc, the last one we did was in Southampton during the fuel crisis and this proved to be un-economic so we took a lease on a small Café locally and from there we started a local meals on wheels (Julie's Kitchen Dinner Direct) delivery service in 2014.



During 2014 it was announced nationally that the WRVS were to pull out of their part of the meals on wheels delivery service due to the contract being awarded to another company, so Danny and I approached some of those local volunteers and asked them if they would continue to volunteer their services for us delivering our meals to those same people, thus keeping the same relationship with those in need in our community.

I started then thinking about Christmas and how our clients are going to manage on Christmas Day so I spoke with Danny and told him of my concerns and asked if we could in some way find a solution, he said (as he does) leave it with me and I'll sort something out, well little did I know then how this would turn out for the future.

Danny spoke with Mike Nicholls of the Community Forum and Mike said he would love to help to get this going so from there we advertised on Facebook and locally for helpers/volunteers to help put a plan of action together to make this happen. We arranged our first meeting in the Town Hall chamber and from there the Community Christmas Day Lunch was formed.

We were donated the Town Hall for Christmas Day and served eighty six of our local Community a Full Christmas lunch with all the trimmings, most if not all were collected from home and returned free of charge by the Venture Club, The Selsey Shuttle bus, Area Taxis and volunteers, we also delivered thirty four meals and presents to those whom could not get to the Town Hall on the day for whatever reason.

We repeated this in 2015 - 2016 and 2017, during 2017 we purchased the lease on the Selsey Club as we had always loved the Club and felt it would enable us to continue with our care and support in the community with me utilising the kitchen as Julie's Kitchen, hence Julie's Kitchen Diner direct.

One thing from doing our meals on wheels service that has always stuck with me is the fact that so many people in our community are isolated/vulnerable and most importantly lonely.

Loneliness is an issue that has stuck with me since one day Danny and I were walking along the prom in Bognor and sat next to an elderly Lady on a bench and she immediately started crying, we asked her what the matter was and she told us that she and her husband had moved to the area in the last 5 weeks, then he died suddenly 2 weeks ago and she was all alone with no friends near her and she did not know the area, from that moment on I always tried to help make a difference where ever I could.

So taking on the Selsey Club for us was a massive thing as it meant we would have a community building (owned by the village) we were led to believe (WRONG) - where we could offer so much more to our community with a safe warm/friendly/family run business in a community-owned building and make it accessible for people where they could come and meet others with similar circumstances thus helping to combat loneliness and isolation amongst those in our community.

We also during and in between these times found ourselves stepping in and saving the Selsey First Responders from breaking up as the Chairman and secretary stood down leaving them with no option but to disband. We took over and assured the volunteers that we would remain until we could find replacements for the roles, this we did after nearly 2 years, it was Danny that sourced and purchased the two sign written vehicles (with a grant from S.T.C.) that the first responders now use, we have always been happy to help and support our community where ever we can and find it so rewarding just to be able to give a little back.



Christmas Community Lunch 2018: we were in no way ready to hold this event in the Club so we held it once again at the Town Hall, another great day had by all. This has now become a big event in the town with so many volunteers on board and so many businesses willing to sponsor and support.



As for volunteers, so many lovely people came forward to offer help but could not help on Christmas Day so Mike at the Community Forum got their details and assured them that their help was needed in the village whenever they were available as there are lots going on in the village that they can help with.

We are in constant touch with Selsey Grapevine and have stepped in to help people that had nowhere else to turn, we have taken meals and goods to people that others were concerned about thus ensuring that if nothing else at least they had a hot fresh meal then informed the necessary people so help could be arranged for them.

2019 Christmas Day Community Lunch we held here at the Selsey Club, being a hub in the community and again it was amazing, we cannot thank our members



and the community enough for their continued and over whelming support for this event and long may it continue, in the week running up to Christmas we had hundreds of gifts and donations of all sorts turn up at the Club to be handed out in the community, we gave thirty families in need a voucher for £30 (mostly funded by profits from our meat raffle at the Club) to be spent at the butchers and a £10 voucher for fruit and veg thus ensuring that those thirty families whatever their situation had a Christmas Day Lunch, a Club member also gave all thirty families a £1 scratch card, we had 17 volunteers at the Club 3 days before Christmas making up 34 hampers from all the donations we received and these were delivered to our local families in need by the Selsey Lions on Christmas eve.

Although The Selsey Community Christmas Lunch at the Club was a resounding success with so many members and volunteers helping and supporting us, the day brought so much joy to so many people and was so so emotional, it now transpires that the decision to hold the event at the Club may have been a mistake, and it could prove troublesome for us.

Please see next month's Selsey Life for the next instalment.

Julie & Danny



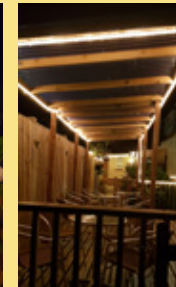
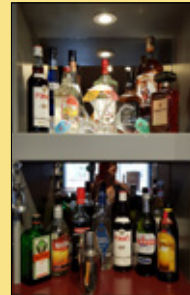
- 19) Who was the last governor of Hong Kong?
- 20) What kind of dog is Dr. Who's K9?
- 21) The Swankers was the former name of which punk group?
- 22) Which order of knights was founded in 1348?
- 23) What is the collective noun for turkeys?
- 24) On which river does Boston, Massachusetts stand?
- 25 ) What is the fingerboard on a violin traditionally made from?
- 26) What does the singer Bjork's name mean?
- 27) Which European country has a national anthem with 158 verses?

## Stop press

The Selsey Club are pleased to announce they have  
**The Comedy Club on Saturday 5th March.**  
Please call **01243 606015** for details.



**Come and join the Selsey Club and enjoy some of the finest beers, wines and spirits in our warm and friendly lounge bar areas, where you can sit and relax, watch TV, play darts or cards or have a frame of snooker or billiards.**



**You will also find a wonderful function room where there is entertainment most weekends and where Sunday Lunch, the best Roast on the Coast, is served.**

**There is a separate cost for all events in the function room, please enquire when booking.**

**There is a weekly Bar Menu with specials on food and drinks, please enquire as below.**

**The Selsey Private Club Ltd is a family run Club and is the perfect venue for all your parties and celebrations. Please call 01243 606015 for all enquiries..**

**Old, New and Current members always welcome, 2022 membership now being taken.**

**Just call in we will show you around..**

**The Selsey Private Club, Coxes Road**

**PO20 9AN 01243 606015**

**New members welcome.**

**We would like to wish everyone a very happy and prosperous New Year..**

**Events for February:**

**Saturday 5th Feb.** Mike Perry (exclusive) singer guitarist covering many tunes from across the decades.

**Saturday 12th Feb. VALENTINE'S DINNER**  
With Steve Williams covering much loved tunes.. Please enquire for Menu.



**Saturday 19th Feb.** The Fabulous Kelly Lorraine singing songs by Stevie Nick's and many more covers..

**Saturday 26th Feb.** The Amazing Sean Ward as The King, Elvis.. will be in the building.



**All of the above have the option of evening dinner please enquire for Menu and to book.**

**The First Wednesday of every month is now our Jamming evening, bring your instruments sing or just listen..**

**The 2nd Wednesday of every month is Art Club**

**The 3rd Wednesday of every month we host The Selsey Folk and Music Club.**

**The last Friday every month we have DJ Tubbs Ska Reggae Northern Soul so get on your dancing shoes..**

**Our usual Entertainment includes:**

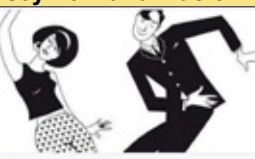
Bingo Bonanza every Tuesday

Quiz is the Biz every Thursday

We have loads going on to suit everyone please enquire.. Darts Snooker etc..

We host the RNA and the Selsey Lions among other things..

**Please call 01243 606015 or you can find us in Coxes Road..**







## February's Update

Christmas is a distant memory now for some, and it seems too late to say **Happy New Year** now we are in February. However, I do hope that you are keeping safe and well and hopeful that things will improve this year for all of us.

Although there was a break over the Christmas/New Year Period, the Selsey Care Shop continued to provide support through their Befriending services. Thank you to the wonderful people who kept in touch with those who may feel isolated and alone through visits and calls. I think I even saw that some of the staff took the opportunity to give the office a "spring" clean, in readiness for what the 2022 may bring.



Since my last article, many friends, volunteers, staff and organisations have been able to participate in the **Selsey Christmas Community Lunch**. Coordinated by Jo Hughes and Richard Lamdin, **Selsey Community Forum** the event took

place face-to-face and safely on Christmas Day. Nearly 50 guests ate in the church, and 67 meals were delivered to people in their homes. Planning began in the Autumn, fundraising has been throughout the year, including donations from grateful people who have used our services, and those raised by **Trident Structural Ltd**, **Sussex Grange Care Home**, **Selsey Lions** and the **Selsey Private Club**.



Our sincere thanks also go to: **East Beach Church** who provided the venue and cooking facilities, ongoing support, setting up and working out safe spacing, the **Concorde** and **Selsey Quilters** who made the beautiful table mats which people could take home on the day, **Celebration Balloons 4 You** who provided the balloons, **Age Fusion** for the individual Christmas cards designed and written by them and given to all guests, those that helped set up on Christmas Eve creating an amazing festive space to celebrate, and

stayed on after the lunch on Christmas Day, getting clearing up & putting the church back for the Sunday service.



**The Fisherman's Joy** who provided the serving trolleys, **Marjorie Cobby House** who enabled us to peel the potatoes, **John and Cat Mears** for the vegetables; food, drink and miscellaneous items, provided and prepared by our amazing volunteers and local community, along with the incredibly helpful **UK Harvest**, who provided the meat, and **The Seal** who provided the vegetarian option.

The gifts for each guest joining us from **Beverley Bramwell (Thomas Bramwell Outdoor Living)**, and crackers from **Carol Purnell. Dens Fish and Chip Shop** Toni from the **Pet Pantry** for food storage. The volunteers/buddies and care staff, who

patiently waited to pick up the meals to deliver to those people unable to join us at the venue. They spent time with those people they delivered to, would feel part of the Christmas celebrations.



**Selsey Venture Bus** and other volunteers for bringing our guests to us, completed the administration tasks, and made sure they got home safely afterwards.

Following a bit of carol singing, and a hearty, piping hot, fresh meal, we were able to listen to HM The Queen's speech on the large screen.

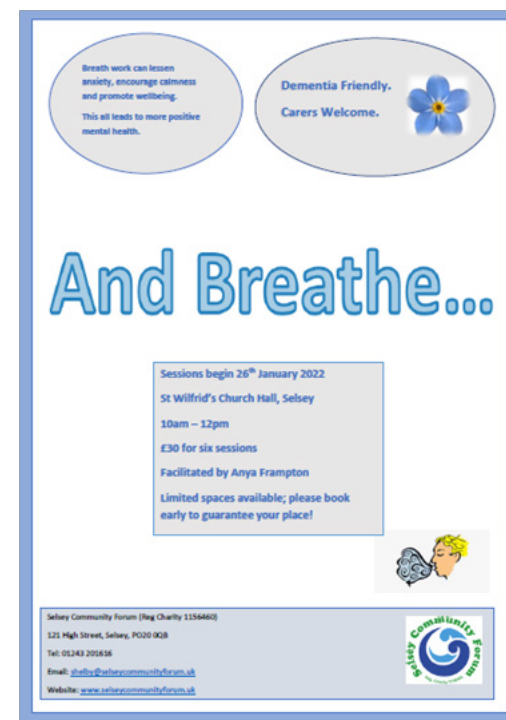
A real joint community event showing what amazing things can happen to make

a difference to people's lives when we all work together!



*"Thank you to everyone involved, the food was fantastic, so were the gifts. Thank you for giving up your Christmas day. From myself & G x x"*

Since November, Neil Kimber (**Highhouse Insurance Services**) has been funding and coordinating **Thursday Lunches** with the befriending team led by Ronelle Juleff. So far, **The Fisherman's Joy**, **The Seal** and **Wave's** have provided 20 delicious meals including a desert. The lunches have taken place at the **Methodist Church Hall**, supported by the **Selsey Venture Bus**. For those unable to attend they have had a meal bought to their home. Thank you to those involved in providing another opportunity for a social meal together for our older folk. If you are a business who would like to support this activity that is hoping to become a weekly offer, then please contact Neil Kimber via the **Selsey Care Shop**. Thank you also for the ongoing support from **The Crown** who have been providing regular freshly cooked Sunday meals for some of our folk in their own homes who are unable to cook for themselves.



And finally, a few wellbeing activities that have been funded by the **WSCC/NHS Joint Dementia Strategy** will be piloted. The **dementia inclusive "and breathe....."** sessions are aimed at people including carers, who would benefit from developing breathing techniques to improve wellbeing and reduce pain. The sessions facilitated by **Anya Frampton**, are dementia inclusive and will take place at **St Wilfrid's Church Hall** in **six-week blocks** from **Wednesday 26th of January (10:00-12:00) £5/session**.

From **Friday 11th March**, **Belinda Gannon** will be facilitating **Dementia inclusive** music for wellbeing sessions. Sessions will be focused on gently developing a range of music through, voice, sounds, and participation based on Belinda's popular **Sing Your Heart Out Sessions**.

These will be running in blocks of five up until Easter and then a break, then after Easter. Again, taking place at **St Wilfrid's Church Hall** from **(13:30-15:00) £5/session (£1 for their carer)**



For more information or to book, please contact the **Selsey Care Shop** or email: [shelby@selseycommunityforum.uk](mailto:shelby@selseycommunityforum.uk)

Karen Pirks

Volunteer Operations Lead and Deputy Chair of the Selsey Community Forum.

## Selsey Community Forum

Registered Charity 1156460

Telephone: 01243 201616

Email: [mail@selseycommunityforum.uk](mailto:mail@selseycommunityforum.uk)

Website: [www.selseycommunityforum.uk](http://www.selseycommunityforum.uk)

Address: **Selsey Care Shop, 121 High Street, Selsey, PO20 0QB**

Opening Hours: **Mon – Fri: 9am – 4pm Sat: 9am – 1pm Sun: 10am – 1pm**

### WANTED - EVIDENCE WE NEED VIDEOS AND PHOTOS OF SEWAGE DISCHARGES

Our harbours, estuaries, and wetlands that unfold across the Chichester Coastal Plain need our help now. The political situation is such that:

- Southern Water will continue to flood these highly protected seas with untreated sewage until such time as they see fit to update their infrastructure.
- This could take decades.
- There is no Government legislation that demands they commence immediately.
- Our respective MPs do not demand their Government to demand they commence immediately.
- Our District Councillors do not demand of their MPs to demand of their Government to commence immediately.
- Our District Councillors continue to grant hundreds of Planning Applications with the full knowledge that the WWT centres are already at overcapacity.
- This will result in our seas, our bio-diversity, our wildlife, our entire eco system being destroyed through pollution.

SAVE OUR SOUTH COAST ALLIANCE



policies to protect Britain's environment when hosting COP26.

- This will result in the rise of human and animal infections.
- This situation goes against all that this Government has shouted to the World about the brilliance of their

### WE HAVE TO ACT NOW – HOW YOU CAN HELP NOW

Using your phone or iPad in the LANDSCAPE shape (ie: not portrait) we need:

- Videos of sewage outflows at the scene of discharge AND its surroundings
- Videos of any upsurges in homes, gardens, high streets as well.

Make a note of: Sender's name; date of film; location as exact as possible; and brief description of what you have filmed. Send as Attachments to: [contact@sosca.org.uk](mailto:contact@sosca.org.uk)

SOSCA has joined together with an Environment Film company who will compile this evidence and create a time 'story' of just how appalling the reality of the situation is.





It's that time of year again. The weather has done its best to deter golfers from playing, but mostly the course has remained open and play has been possible. Now there is a hint of things to come, the gorgeous gold of the gorse bushes that align many of the fairways are just beginning to burst into flower, and in a few weeks it will be ablaze in golden yellow and the course will come to life with its wildlife.



formed the Veterans Section with 6 other gentlemen. At that time the joining age of the Veterans Section was 65, now it is 60.

There is an Arthur Powis Cup, played annually in his honour by the Veterans and Eddie presents her father's trophy to the winner of the competition each year.

Eddie became interested in golf and joined the club in 1973 and soon became a working member of the ladies section and a competent golfer. Eddie has worked tirelessly during her time at the club and just some of the events she used to run are mentioned here. One of the events was a monthly dance; and throughout the year the dance would take on different themes. Fancy dress dances including Tarts and Vicars! were great fun. The year would end with The New Year's Dance and being a black tie event gave all the ladies a chance to wear their evening dresses. This was looked forward to each year and was perhaps the highlight of the year.

Eddie also organised a lot of fund raising events. In 1990 she held a special event to raise money for Pudsey, Children in Need, which raised a lot of money for the charity.



(the photo shows Eddie holding Pudsey with her fellow fund raisers).

Many years ago Eddie approached the Bowling Club to see if they would join the golfers for a Putting and Bowling competition to take place on the August Bank Holiday Monday. This was agreed and ever since, this very friendly competition has been played until 2020. Hopefully this will be resumed this year. In the morning one half of the participants would bowl and the other half do the putting. During the lunch a raffle would be drawn, always a great many prizes to be won. After a superb buffet etc. the players would reverse the morning's play to complete the competition. At the end of the competition, the results would be waited

for with much anticipation. So far, for some unexplained reason, the competition has always ended in a draw!

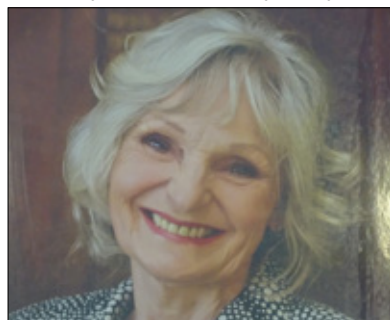
The annual Pro Am was a huge event, This event was first introduced to Selsey Golf Club by Clive Cockayne in 1989. Three golfers would be teamed up with a Professional Golfer coming from all over the south of England. Eddie ran a huge raffle to raise money for the event organising the prizes and selling the tickets on the day.

Eddie held many official positions in the ladies section including, following in her father's footsteps, being Competition and Handicap Secretary. Eddie has also been Lady Captain 4 times. The first time was in 1989/1990. The second time was in 2008 which was the Centenary of the Club. Eddie was Captain for 18 months this year. The Golfing year before 2008 went from the 1st of April until the End of March. Because the whole of 2008 was the Centenary year, it was changed, so that the centenary celebration could end on 31st. December. Many events took place in that year, to celebrate the 100 years of the Club and Eddie was much involved in these. At the end of this year Eddie was made an Honorary Member of the Club.



A new Competition was set up in all sections to commemorate this year, and in April 2008 the first Ladies Centenary Foursomes was played. Eddie presented the ladies section with two bronze lady golfers that can be seen in the photo with the pair who won the first Centenary Foursomes trophy. (Joan Bramer and Shirley Drysdale). The third and fourth time Eddie was Lady Captain was in 2011 and 2012. The ladies section was struggling then, for lady members, and there were no ladies able to take on Captaincy, so Eddie agreed to take on a second year in 2012.

Eddie has been a huge inspiration to the many ladies who have joined the club over the years and is still very supporting. Her knowledge of the game and its rules has been like an open book that all ladies could refer to. Eddie has now decided that she just wants to play and enjoy her golf Club which she has played such a huge part in helping it to be the friendly and successful club that we all enjoy today.



Sheila has a full year of competitions and events to organize and oversee and will be working closely with both Simon and Robert for the mixed events. A happy and successful year is wished to them all.

Now the writer would like to dedicate this article to one of the longest staying members of the Club.



Eddie Williamson has been a member of this club for 49 years. Born in London just before World War II and losing her mother at the age of two and a half, she was looked after by her grandmother. When war broke out she was evacuated with her Auntie and two cousins to Selsey. After the war her father, Arthur Powis joined them in Selsey and he built a bungalow here and Eddie still lives there with her husband John. Eddie and John have 3 daughters.

In 1972 Arthur joined Selsey Golf Club and was member for many years.

During his time at the Club he was competition and handicap secretary and he



## CRABLANDS BOWLS & TENNIS CLUB

Affiliated to E.B.E., L.T.A. & E.S.M.B.A.  
Crablands, Selsey, PO20 9BD

CRABLANDS SHORT MAT BOWLS & CLUB activities...

**The Bitterns hosted Arundel Swallows on Saturday 27<sup>th</sup> November.** We won on both mats which cancelled out our loss when we went there giving us 6 points on the day. Bitterns 40 shots Swallows 28 shots. Also, the friendly match did well winning 39 v 8.

**On Sunday 28<sup>th</sup> November Crablands Avocets played a league match against Fittleworth Swans** winning 4 of the 6 points available. On Mat 1 Elaine Sadler, Sarah Fewster and Paul Holland had a very strong start to their match and were ahead until the 15<sup>th</sup> end. Fittleworth Swans then picked up their game and went on to win the match 17-10 despite Avocets best endeavours. On Mat 2 Julia McLaren, Graham Ainge and Trevor Plaistow were leading from the beginning and although Fittleworth Swans tried to fight back Crablands easily won the match 24-9. The aggregate score gave Crablands the extra 2 league points.

There was also a friendly game. Susan Jackson, Cheryl Brown & Bryan Jackson enjoyed their match but sadly lost out to the stronger Fittleworth team. It was a great afternoon of bowling and Avocets look forward to the return match at Fittleworth in the New Year.

**Our Club social events are back in full swing** with a fabulous Christmas Quiz evening in December. Thank you to Elaine for putting the quiz together; great fun was had by all. Our club bar was open plus we enjoyed a jacket potato with choice of filling for our supper.

We also successfully hosted a Beetle Drive game in January.

**Saturday January 15<sup>th</sup> Crablands hosted Hawley Hawks in the Knockout Cup.** Crablands were successful on one rink but unfortunately lost heavily on the other rink and could not make up the deficit. Better luck next year!

**2022 started with our Chairman's Cup competition and what a competition it was!** On day one all games were keenly contested but two had nail-biting finishes!

In round one Denise & Bill Merritt took on Rod Shambrook & Mollie Back and after a gruelling 18 ends the score line was 15-15. On the extra end Denise & Bill picked up the one point required to win. Unfortunately, they were unable to continue with their quarter-final and withdrew from the competition.

In the first of the quarter-finals Bryan & Susan Jackson lead 17-16 with one end to play against Tony Dade & Val Foyle. Superb play by Tony & Val saw them get the 2 shots needed, giving them a victory 18-17.

Semi-final's day was equally exciting. On Mat 1, Tony & Val took a clear lead and a late surge by Peter Blackman & Cheryl Brown couldn't quite make up the deficit, Tony & Val being clear winners 17-9.

Joining them in the Final are Graham & Alex Ainge who took an early lead against Lew & Chris Lewendon.

Graham & Alex never looked under threat despite Lew & Chris picking up a 3 on the 10<sup>th</sup> end, the final score 20-8.

The final is to be held in March, it will be a very exciting match between 2 very good teams.

If you are interested in joining our club get in touch by emailing Julia on [julia.mclaren@outlook.com](mailto:julia.mclaren@outlook.com) or call Alex on 0797 641273.



## THE SELSEY CARPET BOWLS CLUB

2022 started with our Chairlady Sylvia Ballinger stepping down & handing over the reins to Karen Zarwalski. Sylvia was presented with a framed memento containing " Thank You " messages from club members .

Times for bowling are as follows :-

Sunday 10am -12noon  
Wednesday & Thursday evenings 7-9 pm

We are a very friendly club & welcome new members, all equipment is provided.

Come along & give it a try at Medmerry School, (entrance opposite the Library ) you won't be disappointed.

Contact Annette on 606227 or Karen on 607169

email: [royandjean325@gmail.com](mailto:royandjean325@gmail.com)

[www.selseycarpetbowls.co.uk](http://www.selseycarpetbowls.co.uk)

## JIGSAW PUZZLE LIBRARY

*Do you like doing Jigsaws?  
Would you like to be able to borrow rather than buy?*

*Please call 605942 to make an appointment to collect the puzzles.*

14 Green Lane, Selsey

We are practising self-distancing rules.

The Membership Fee is just £5 and puzzles can be borrowed for a £1 a month each. Over 300 to choose from.

More information on 605942.

**All proceeds in aid of The Sussex Snowdrop Trust (charity no. 1096622)**



**We are pleased to now be able to offer some jigsaws for sale, all in good condition. Please ring 605942 for further details.**





## THE CAT & RABBIT RESCUE CENTRE

THE CAT & RABBIT RESCUE CENTRE

Tel: 01243 641409 Reg. Charity no. 1010000

Email: [info@crcc.co.uk](mailto:info@crcc.co.uk) [www.crcc.co.uk](http://www.crcc.co.uk)



Hello everybody! It's me Markus the office cat bringing you all the latest news from The Cat and Rabbit Rescue.

Last issue's pet of the month was the beautiful Kamie, she did find herself a new home but unfortunately, she was returned after her new owners found her to be too temperamental. Kamie now is again looking to find her forever home, please have a look at CRRC's website for more details.

In this issue I wanted to tell you all the animal statistics from last year. In 2021, The Centre took in 647 cats, rabbits and guinea pigs, this is up by over 100 from 2020. My staff thought this would be the case as 2020 was a quieter year due to COVID and they also did think we were busier this year. Now for the good bit, in 2021 I am so thrilled to let you know that 550 cats, rabbits and guinea pigs found their forever homes and I hope they are all very happy. I have a few more interesting statistics for you that my staff worked out – in 2021 our busy veterinary team spayed or neutered 347 animals and gave out 834 vaccinations. Lastly in 2021 my lovely staff gave out over 133, 200 meals to the animals in our care!

I hope you all had a lovely time over Christmas and New Year, I was spoilt by my staff and given extra treats and a new cat nip mouse. Over Christmas my staff ran a campaign over on our social media raising money for The Centre and I am pleased to announce to our lovely supporters we raised an amazing **£615**.

We also received so many gifts of food, treats and toys from people in person and from our amazon wish list. Thank you very much to everyone who donated to us over the festive period but I wanted to say a special thank you to Jenni from Grace Medi-Spa who raised an amazing **£300** for the animals as well as a whole load of treats and toys from her clients. Also a big thank you to Milly from Saddlers B & B in Funtington who raised a lovely **£150** from the sale of her delicious jams. Milly told us that her family friend Robert makes all the jams for Saddlers B & B from the fruits and vegetables he grows in his garden, how lovely!

Lovely to chat to you all again, see you next month.

Love Markus x

P.S. Please check our website [www.crcc.co.uk](http://www.crcc.co.uk) to see how we are now rehoming and for the animals available for adoption.



**Cat & Rabbit Rescue Centre**  
Giving the living a chance at life



## THE CAT & RABBIT RESCUE CENTRE

Have you visited the Cat & Rabbit Rescue Centre Charity Shop at 9 The Parade, Selsey?

It is full of fantastic bric-a-brac, including antiques, pictures, jewellery, as well as clothes for every occasion, beautiful bedding, curtains, craft items, and good quality furniture.

If you have time to spare, why not become a volunteer, just visit Bev or Katy in the shop.

### Did you know?

Half the world's cork comes from Portugal

### Nelson



This month we would love to introduce you to the very handsome Nelson. Nelson is a 6 year old neutered male cat who has been with us at The Centre since August. He was brought into us because he was not getting on with the child in the home and after he bit a couple of times his owners thought he would be happier in a different home.

He is a very sweet boy who loves loads of attention and strokes but he does have a cheeky side. He can still bite occasionally and we are not sure why, it may be due to being overstimulated but he is a really playful boy who loves to chase his toys around his pen.

Because of this Nelson is looking for a home with new owners that have lots of time to spend with him but will understand that he could still bite. Nelson would be best suited to a home where there are no young children and where he is the only pet.

When Nelson first arrived, he did suffer from loose stools, our vets did try different medication but it seemed to work best when he was changed onto a raw food diet. Because of this, his new owners will need to continue to feed him a raw food diet but once he settles in they may be able to change him back to normal food.

If you think you may be able to offer Nelson a loving home please give the centre a call on **01243 967111** or visit our website [www.crcc.co.uk](http://www.crcc.co.uk).

## THE CAT & RABBIT RESCUE CENTRE

Holborow Lodge, Chalder Lane, Sidlesham,  
W. Sussex PO20 7RJ

Tel: 01243 967111 Reg. Charity no. 1010000

Email: [info@crcc.co.uk](mailto:info@crcc.co.uk) [www.crcc.co.uk](http://www.crcc.co.uk)



Also find us on facebook

[www.facebook.com/catandrabbitrescuecentre](https://www.facebook.com/catandrabbitrescuecentre)

## Selsey Royal British Legion Fishing Club

New Members Welcome.



For details ring Brendon  
01243 601009

- 28) What is the English name for red wine from Bordeaux?
- 29) In which year did the English parliament pass the Bill of Rights?
- 30) What was Gregory Peck's real first name?
- 31) Which song-writing duo wrote "Ol' Man River"?

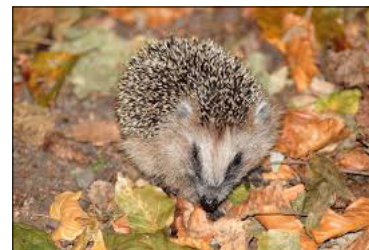


### What's on at Brent Lodge

There's now a true wintry chill in the air, but come frost or snow, the Brent Lodge team is busy as usual caring for our feathered and furred patients.

The outbreak of bird flu continues to add to our usual challenges, with stringent measures in place to protect existing patients. Sadly, it means we cannot currently admit bird casualties on site. However, if you find a sick or injured bird, do still call us on **01243 641672**.

We also have an abundance of our favourite prickly pals. Often hedgehogs that come to us are too underweight to begin hibernation safely, so rehabilitation includes feeding them up. Some of our current patients are also very poorly, so our vet and dedicated staff are working around the clock to get them back on their paws.



### How to help wildlife

The harsher winter months always pose challenges for wildlife, but the good news is that you can help. As natural food sources become scarcer, it's an ideal time to start feeding garden birds.

Try to provide a range of food to benefit different species: unsalted peanuts, mixed birdseed, mealworms and scraps such as cheese and pieces of apple or pear.

Making fat balls is a great rainy day activity to involve kids in caring for wild birds. Simply mix softened lard or suet with seeds, peanuts and even bacon rinds, and shape into balls that can be put in a feeder. Alternatively, you can squidge the mixture around pine cones and hang them up with string.



Photo by [Amea Fairbank-Brown](#) on [Unsplash](#)

On frosty days, put out a shallow dish of fresh water for wildlife, and melt a hole if your pond or bird bath has frozen over. Animals and birds struggle to find water as well as food at this time of year.

### Your gardening calendar

Good news – being lazy in the garden this month can actually help wildlife! If you leave tidying the borders and shrubs until early spring, these areas can provide shelter – piles of leaves or wood are particularly useful, and a compost heap could help a toad or slow worm in need of a home.

### Donate today

Our patients rely on the generosity of the public. If you'd like to donate £5 to help us provide the shelter, food and medical care an animal needs, text **BLWH5** to **70085**. You will be charged your standard network rate. To find out more about what we do and how you can help, visit our website:

<https://www.brentlodge.org/>.



### Could You Join 4Sight Vision Support's 100-4-100 Campaign?

West Sussex charity 4Sight Vision Support is marking its 100th anniversary year with two special '100' related fundraising campaigns.

100 participants are invited to sign up for the '100-4-100' challenge with the aim of doing 100 of something to each raise £100! By taking part you will be raising vital funds to provide specialist services for blind and sight impaired adults and children across the county, and at the same time having fun doing something you enjoy 100 times over!

A number of participants have already signed up: Fundraising Manager Chloe Neilson-Hopkin is growing 100 plants to sell, while Julie Branson, Fundraising Manager (maternity cover) will be walking 100 miles in 100 days. Two people have made a £100 donation each and one supporter has even enjoyed 100 gin and tonics and made a donation! Perhaps you could bake 100 cakes, read 100 books, swim 100 lengths, or play 100 rounds of golf – whatever it is you like doing!



In addition, 4Sight Vision Support will be running a Centenary Prize Draw. Tickets will be available from mid-January from its offices in Bognor Regis and Shoreham, costing £1 a ticket, in books of x10. Prizes include a tour for two people of Hepworth Brewery in Pulborough; four tickets for Rock of Ages at The Hawth Theatre, Crawley in May; a £30 voucher for the Giggling Squid Restaurant, Chichester; a Firebird Brewery beer gift pack; a gift token for the Regis Centre, Bognor, and a stunning metallic table lamp worth £145 from Reynolds Furniture in Bognor.

The closing date is Friday 4 March and winners will be drawn on Monday 7 March. Full Ts&Cs can be found on the website.

To discuss any ideas for the 100-4-100 campaign or to purchase prize draw tickets please call **01243 838001** or email [fundraising@4sight.org.uk](mailto:fundraising@4sight.org.uk)

Image: Julie Branson and family take up their 100-4-100 walking challenge.



### RNLI SELSEY LIFEBOAT SHOP

Please continue to support the Lifeboat shop.

Sale now on many lines reduced,

Christmas Cards, Biscuits and preserves ,  
together will our usual gifts and greeting cards.

Shop open Weekends only 10.30 -15.30 until 22 February  
then

Open Tuesday to Sunday 10.30 -15.30

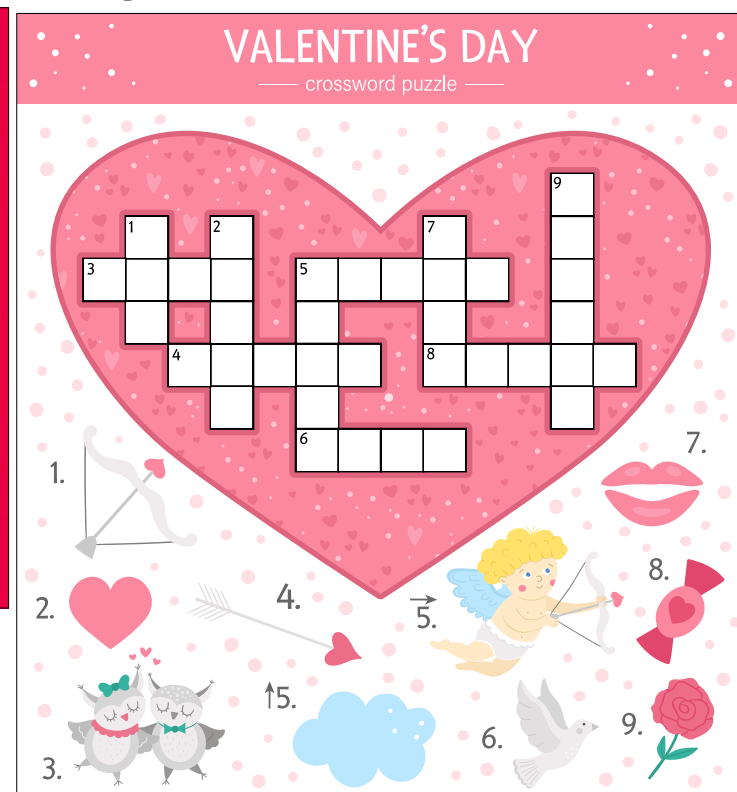
Look forward to seeing you all

For up to date information please check our:-

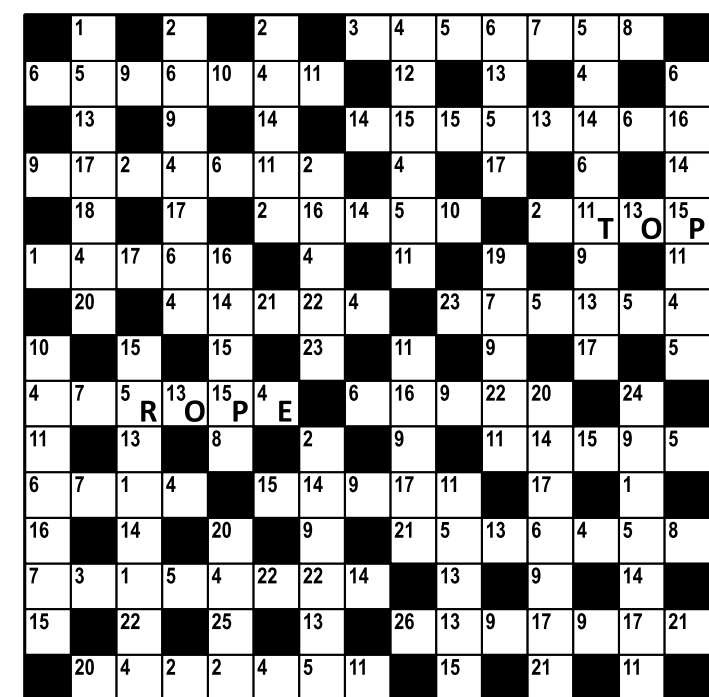
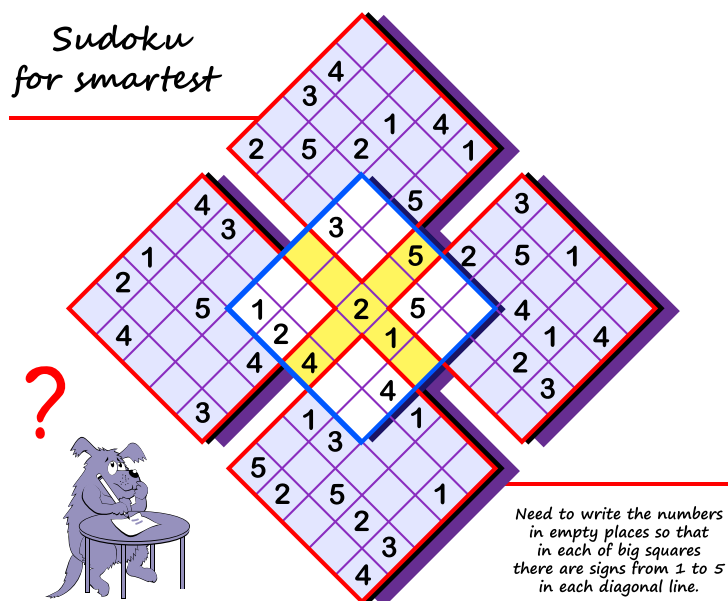
Facebook page - RNLI Selsey Lifeboat Station

Website - [www.selseylifeboats.co.uk](http://www.selseylifeboats.co.uk)





## Crack the Code

Sudoku  
for smartest

?



**FIND**  
**10**  
**DIFFERENCES**

*Valentine's Day*  
word scramble

EVOL \_\_\_\_\_  
PICUD \_\_\_\_\_  
KSEISS \_\_\_\_\_  
BONBIR \_\_\_\_\_  
ETAHR \_\_\_\_\_  
ERD \_\_\_\_\_  
NAMOCER \_\_\_\_\_  
KNIP \_\_\_\_\_  
WLOFER \_\_\_\_\_  
RESO \_\_\_\_\_  
INELEVANT \_\_\_\_\_  
MOEP \_\_\_\_\_  
DYNAC \_\_\_\_\_  
MILAXOB \_\_\_\_\_  
RADC \_\_\_\_\_  
RYRUBEFA \_\_\_\_\_



?



## Selsey Model Boat Club

The Club meets twice a week at the pond on East Beach, weather permitting, when members sail their radio controlled boats  
Times: 10.00am until noon on Sundays and Wednesdays

The first Sunday of each month is Race Day  
New members welcome  
or just pop along to have a look and a chat  
contact Chris on Selsey 601550

## THE WRITERS CIRCLE

meets on the first Tuesday of every month in The Methodist Hall, High Street, from 2.00pm until 4.30pm  
If you are already writing or a complete beginner you will be given a warm welcome by our small, friendly group of ladies and a few gentlemen  
Membership is £12 per year and £2.00 per session.  
Tea or Coffee included.  
For more information contact Pat Read Tel: 601550

## 1ST SELSEY SCOUTS Charity Shop

Scout HQ, School Lane ~ every Saturday  
between 10 am -12 noon  
Bric-a-brac ~ Clothes ~ Et al



## Selsey Men in Sheds

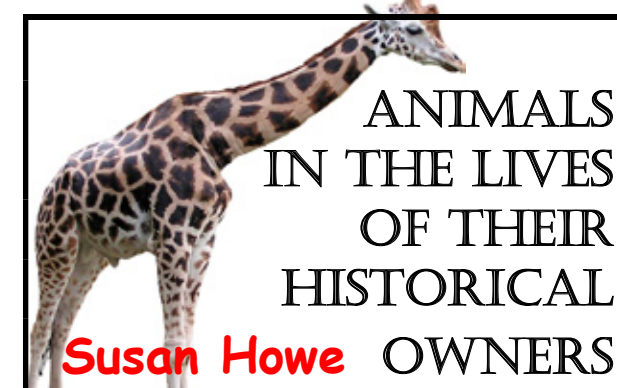
A non-profit making organisation

Open Tuesday & Thursday 10 - 4  
Saturdays 10 - 2

Membership £10.00 per month or £100 per year  
Complete your own wood / metal projects or be involved in group activities

If you are interested in joining contact  
Mick Webb 07939 880029  
email [m.c.webb46@gmail.com](mailto:m.c.webb46@gmail.com)

**u3a Selsey**  
learn, laugh, live



**Open Meeting**  
**Friday 25<sup>th</sup> February 2022**

1.30 for 2.00pm  
at the Selsey Centre, Manor Road

Refreshments - Admission ticket prize - Quiz - Raffle  
Non-members - admission £2.00

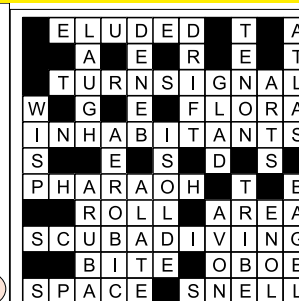
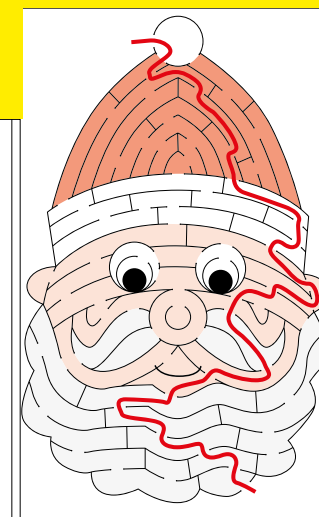
1) Will Keith Kellogg and John Harvey Kellogg 2) Hair 3) Four 4) HMS Hermes 5) Walter Winterbottom  
6) Orange County 7) Rimsky-Korsakov 8) Carpenter 9) Robert Wagner 10) Audley Harrison 11) Solomon  
12) Sunflower 13) Gold 14) Wales 15) Palindrome 16) Rowing 17) Dooley Wilson 18) Moraine 19) Everton  
20) TASS 21) Emma Watson 22) Benjamin Britten 23) The Pips 24) Grass skirts 25) Sahara  
26) ABBA 27) The meadows 28) 1170 29) Fan  
30) The Rivals  
31) Gibraltar

**HOW  
MANY  
SANTAS  
DO YOU SEE?**

**ANSWER**

**18**

SOLUTION: SANTA CLAUS



**Last Month's  
Answers**






**FIND  
10  
DIFFERENCES**



## Crack the Code

1=J, 2=P, 3=C, 4=S, 5=U, 6=B, 7=E, 8=T, 9=A, 10=L, 11=O, 12=N, 13=R, 14=Z,  
15=G, 16=I, 17=M, 18=H, 19=W, 20=K, 21=V, 22=X, 23=D, 24=F, 25=Y, 26=Q.



Day	AM	PM
<b>Sunday</b>	<b>10am - Morning Worship</b> <i>First Sunday in the month is our "All-age service"</i>	<b>5pm Evening Worship</b> <i>6<sup>th</sup> February Songs of Praise</i> <i>13<sup>th</sup> February Evening worship &amp; Communion</i> <i>20<sup>th</sup> February 3pm ResBite Tea</i> <i>27<sup>th</sup> February EveningWorship (Spotlight)</i>
<b>Monday</b>	<b>10am - Care Home Praise</b> <i>(Service also recorded on YouTube and DVD)</i>	
<b>Tuesday</b>		<b>2.00 - 3.00pm Pop Up Pantry</b>  <b>7pm - Prayer Meeting</b> <i>(via Zoom)</i>
<b>Wednesday</b>		<b>2 - 3.30pm - Tea &amp; Chat</b>
<b>Thursday</b>	<b>7am - Early Morning Prayer Meeting</b>	<b>12.30 pm</b> <i>(on 3rd February)</i>  <b>7pm - Small Groups</b> (Contact Church for details)
<b>Friday</b>	<b>10am Sunbeams</b> <i>Parents and toddlers group</i> 	<b>5 - 6pm - Bright Sparks</b> <i>(Yrs R-4)</i>  <b>6.15 - 7.15pm - Lighthouse &amp; Ignite</b> <i>(Yrs 5-11)</i> 

**YouTube Live Stream. Upload and Playlist Weekly Schedule**

The live streams will appear on our YouTube channel. To find our channel search for "Beacon Church Selsey Channel" on YouTube.

**Beacon Church Selsey, Marisfield Place, Selsey**  
Tel: 07521 609730 [www.beaconchurchselsey.org.uk](http://www.beaconchurchselsey.org.uk)  
Email: [office@beaconchurchselsey.org.uk](mailto:office@beaconchurchselsey.org.uk)



**2022** = *Change but no change!*

*Formerly known as.....*



We are all hoping 2022 will mark an end the Covid pandemic that has dominated life all over the world for the last two years. However, it also marks a beginning for our church. From January 2022, the church you would know as **East Beach Church** or **East Beach Evangelical Church** will be known as **BEACON CHURCH SELSEY**.

You may not know but the word CHURCH comes from a Greek word meaning the 'called out ones' and therefore refers to 'people' rather than to the building we meet in. However, our building is still important to us. As an independent free church, we first started meeting in 1965 in the front room of **Park House**.



Then in 1974 the church members began to construct the current building in Marisfield Place. Nine months later in April 1975 we began to worship there.

Over the years we have adapted and modified the building to suit changing demands on its use. We have increased the central worship area, added an external temporary building for the Sunday School and children's work, and most recently re-surfaced the car park.



The church began in 1965 with the name **Selsey Christian Fellowship**. It changed its name to **East Beach Evangelical Church** once the building was completed in 1975, as at the time, the word 'Evangelical' was felt to more clearly describe the church family and it's mission.

Last year, the decision was made to change its name to **BEACON CHURCH SELSEY** to give fresh emphasis to our purpose and better embrace our current community involvement. Each of the three words making up our new name have significance.



We are a **CHURCH** with a desire to love and worship God, and to love and support one another. This is expressed through regular worship on Sundays 10am and 5pm, through small group meetings midweek for fellowship, prayer and Bible study, and through care support structures.

We are a **BEACON** with a desire to love all people and bring light and hope to all, near and far, through preaching the Gospel of Jesus Christ and doing good wherever and however we can. For **children and youth**, we run a carer and toddler group (Sunbeams), youth groups (Bright Sparks,

Lighthouse and Ignite), a Sunday school (Cabin Crew), and support schools with assemblies and in other ways. For our **older friends**, we have a monthly lunch club for some, weekly meal delivery for others, regular Songs of Praise services, and we produce regular hymn and fun song recordings for Care Homes. We also arrange events of various kinds throughout the year for men, for women, for children, for families, or for everyone.

We are in **SELSEY** with a desire to love the community by being supportive of and getting involved in community initiatives as we are able. We are closely involved with **Selsey Community Forum** and the various projects and support groups they spearhead. We support **The SHOP** in the High Street which also seeks to be a **Beacon** in the community. We host a **Pop-up Pantry** one afternoon a week in association with UK Harvest. We are involved as a church in supporting the RNLI through fundraising and have supported the **Christmas Day Community Meal** for some years and this year had the privilege of hosting it. Our wonderful community is in our heart and part of our DNA. That has not changed.

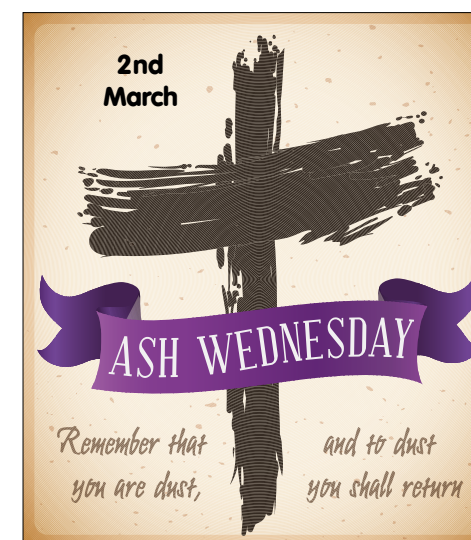
In line with our new name, our motto for the year is **"Let your light shine"** which comes from a teaching of Jesus himself who said (in Matthew 5:16) **"In the same way, let your light shine before others, that they may see your good deeds and glorify your Father in heaven"**. By God's grace we have been a Beacon for over 50 years, and by God's grace we will endeavour to shine ever brighter into 2022 and beyond.

**Beacon Church Selsey, Marisfield Place, Selsey**  
Tel: 07521 609730 [www.beaconchurchselsey.org.uk](http://www.beaconchurchselsey.org.uk)  
Email: [office@beaconchurchselsey.org.uk](mailto:office@beaconchurchselsey.org.uk)



**SELSEY METHODIST CHURCH SERVICES**

Sunday February 6<sup>th</sup> 10.30 am Mrs. Wendy Corney  
Sunday February 13<sup>th</sup> 10.30 am Mr. Brian Kelley  
Sunday February 20<sup>th</sup> 10.30 am Revd. Bob Sneddon  
*Holy Communion*  
Sunday February 27<sup>th</sup> 10.30 am Mr. David Parr  
Our minister is Revd. Ian Suttie 01903 245799



**ST PETER'S CHURCH**

Weekly Services held at the Parish Church of St. Peter's, Selsey  
Rector: Fr Andy Wilkes  
Tel: 01243 601984 Email: [rector.selsey@gmail.com](mailto:rector.selsey@gmail.com)

The church is open daily for prayer and visits.

Tuesday 9.30 am Holy Communion  
Wednesday 9.30 am Holy Communion  
Thursday 7.00 pm Holy Communion  
Sunday 8.00 am Holy Communion (Book of Common Prayer)  
Sunday 10.00 am Parish Sung Eucharist

Please check our noticeboard and website for service times

*All are welcome to attend, we look forward to seeing you.*

Our Church Halls with Kitchen and Car Park are available to hire for your meetings and celebrations please contact our Hall Manager Sue Ripley on 01243 948501 or [stpetershallbookings@outlook.com](mailto:stpetershallbookings@outlook.com)

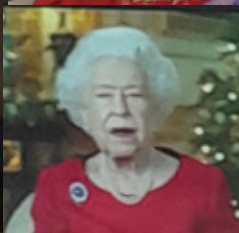
**SELSEY METHODIST CHURCH**

For enquiries about hiring the hall please email [d.dixon808@btinternet.com](mailto:d.dixon808@btinternet.com)





## Christmas Meal



**Selsey Christmas Community Lunch**

**Were you there? Can you spot yourself in the pictures?**