

NEWS • GARDENING • WHAT'S ON • WILDLIFE • SPORT

# Selsey Life

Community Magazine

A graphic illustration at the top of the page features a black silhouette of a windmill on the left, a bridge in the center, and industrial structures on the right. The text 'Selsey Life' is written in a large, elegant serif font, with 'Community Magazine' in a smaller, sans-serif font below it.

NOVEMBER 2023  
ISSUE NO. 294

Find us on  
Facebook

[www.selseylife.weebly.com](http://www.selseylife.weebly.com)

**£1**

*in the yellow pots  
please*



# Lions Santa Routes



**Selsey & District Lions Club  
Christmas Carol Float Routes December 2023**

**Sat 2<sup>nd</sup> Selsey Christmas Parade East Beach and High Street**

**Sun 3<sup>rd</sup>: 4.30pm** Manor Road, Mountwood Road, Broomfield Road, Elm Tree Close (+cul-de-sacs), Manor Road, Grafton Road. (up to Grove Road), James Street, Chayle Gardens, Western Road

**Mon 4<sup>th</sup>: 5.30pm**, Mundham and Runcton area.

**Tues. 5<sup>th</sup>: 5.30pm** Beach Road, Marrisfield Place, Kingsway, Albion Road, Sunnymead Drive & Close.

**Wed 6<sup>th</sup>: 5.30pm** Church Road, St. Peters Crescent, Wellington Gardens, Malthouse Road (+cul-de-sacs), High Street, East Street, North Road, Nethernton Close.

**Thurs. 7<sup>th</sup>: 5.30pm** Merryfield Drive, Burlington Gardens, Tretawn Gardens, Constable Drive, Gainsborough Drive, Landseer Drive, Hannover Close, Lingfield Way, Littlefield Close.

**Fri 8<sup>th</sup>: 5.00pm** Manor Farm Close, Chichester Road, Hunisett Close, Millington Drive, Fidler Close, Petts Close, Robinson Close.

**Sun, 10<sup>th</sup>: 5.00pm** Marine Drive, Broad View, Eastway/Bank, Fontwell Road, Gillway, Chichester Way.

**Tues 12<sup>th</sup>. 5.30pm** Hunston: Foxbridge Drive, St. Leodegars Way, Orchard Side, Westlands Road, Little Boultons. (For Safety Reasons there will be no collections on the B2145 main road).

**Wed 13<sup>th</sup>: 5.30pm** Ursula Square & Avenue, Seal Road & Square, Marine Gardens, Hillfield Road; Bridge Way, Peachy Road, Green Lane, Meadowlands, Latham Road, Langton Close, High Street, Bridleway, Croft Way.

**Thurs. 14<sup>th</sup>: 5.30pm**, Grafton Road (from Grove Road), Lifeboat Way, Coxswain Way, Wright Way, Barnes Close, Canadian Crescent, Pacific Way, Jones Square, Beacon Drive, Lawrence Close, Mixon Close, Sparshott Road, Pennycord Close.

**Fri 15<sup>th</sup>: 5.30pm** East Beach Road, Drift Road, Solar Drive, Tranquillity Way, Lunar Crescent, Orbit Gardens, Halley View, Jodrell Place, Wheatfield Road, Manor Lane.

**Sun. 17<sup>th</sup>: 5.00pm** Sidlesham Area.

**Mon 18<sup>th</sup> 5.30pm** West Street (+ cul-de-sacs), Bonnar Road, Clayton Road, Sea Grove, Vincent Road, Coxes Road, Warner Road.

**Tues 19<sup>th</sup> : 5.30pm**, Bill House, Byways, Solent Way, Seal Road, York Road, Tythe Barn Road, Green Lane, Windsor Road, Grove Road, Orchard Avenue, Southern Road, Longacre (Beaufield), Woodlands Road, Beach Gardens, Cherry Gardens, Ursula / St. Itha Road.

**Wed 20<sup>th</sup> : 5.30 pm** Old Farm Road, Spinney Close, Granary Lane, Mc. Nair Close, Honeysuckle Lane, Blackberry Lane, Donaldson Close, Colt Street, Acorn Close, Horsefield Road, Coppice Lane, Saddle Lane, Paddock Lane, Horseshoe, Large Acres, Crablands.

**Static Collections: Sat. 9<sup>th</sup> TBA, Sat. 16<sup>th</sup>: Coop Sat, 23<sup>rd</sup> John and Catherine's Fruit and Veg Shop.**

**The above will depend on weather and routes will be rearranged accordingly. Updates will be published on Selsey Lions Facebook page.**



## Christmas Events and Gift Ideas at 4Sight Vision Support

4Sight Vision Support (4SVS) is getting ready for Christmas with its annual Christmas Concert and Grand Draw, as well as offering cards and gifts for sale. Proceeds will help the charity in its work supporting blind and sight impaired residents of all ages throughout West Sussex.



This year the annual Christmas Concert with Seaford College Chapel Choir will be held on Monday 11<sup>th</sup> December in the early evening, rather than at lunchtime, to allow more people to attend after work. This is always a lovely event and 4SVS advises reserving a place well in advance to avoid disappointment, with payment then taken on the door. The Concert will be held at St Mary de Haura Church in Shoreham, tickets are just £5pp including festive refreshments.



The Grand Draw has a number of fabulous prizes, with the main prize being £250 in cash. 4Sight Vision Support is encouraging everyone to share the news of the draw with family and friends, tickets cost just £1 each and the winners will be announced at 2pm on Wednesday 20 December.

Christmas cards are available with a variety of seasonal and fun designs, please order well in advance while stocks last. And if you know someone living with sight loss, or you yourself do so and would like to drop a few hints to family and friends (!) there are gift ideas including large print playing cards, large print Scrabble, large print calendars and diaries, as well as equipment such as talking kitchen scales. For those who enjoy walking, a book of 35 'Short Rambles in the Sussex Countryside And Days Out' by volunteer Jane Aston features walks carefully designed to be suitable for everyone including those with sight loss or vision impairment.

For further information about the Concert and Prize Draw and to purchase tickets, and to enquire about Christmas cards and gifts, please call 01243 828555 or email [fundraising@4sight.org.uk](mailto:fundraising@4sight.org.uk)

The image shows the Seaford College Chapel Choir at a previous Concert.

Charity Number: 1075447



## TERRY & IRELAND<sup>Ltd</sup>

**Plumbing and Heating Engineers  
Installations & Repairs**

**Ceramic floor and wall tiling**

**Complete bathroom installations**

**Disabled / wet rooms / tiling and all small jobs**

**46 High Street Selsey**

**01243 602827 / 0783 670 0863**

Est 1962  
Free  
Estimates

### COPYRIGHT WARNING

No part of this publication may be copied or reproduced, stored in a retrieval system or transmitted in any form or by any means electronic, mechanical, photocopy, recording or otherwise without the prior written permission of the publisher ©2023. Selsey Life Ltd

Would you like to sponsor the Selsey Life magazine? If not the full magazine, how about sponsoring a page for a month for £20.00? We may not be able to guarantee what page, it would be on a first come basis, but we would try to match you if possible. Is this of interest? Please email the Selsey Life in the usual way, [selseylife@btinternet.com](mailto:selseylife@btinternet.com).

We also offer a six month subscription for the magazine, because of the rise in postage this now has to be £21.00, including postage, but we hope you still think it value for money.

Please, wherever possible, do your best to support any of the local shops and venues that you can - you will miss them all when they are gone, and please mention Selsey Life when responding to anything in the magazine..

Thank you to all of you who are purchasing and reading the magazine, we are always happy to receive feedback. As always, if you have just picked the magazine up whilst in a queue or something and are not going to take it, please still consider a donation in the yellow pots, thank you

**Lloyd Bank sort code 30-98-97, account number 43314960**

Our 5% offer for anybody who gets us new advertisers still stands.

We are happy to receive any feedback, good or bad, along with any articles and/or photos for inclusion. Tell us what you want to see.

As ever, thank you to all of our contributors and advertisers in these difficult times, and our printers for always producing a good magazine for us.

This month we are able to offer you again two prizes, one of a Sunday roast for two at the Selsey Private Club, and the second a Thursday roast for two at the Selsey private Club.

To win the Sunday Lunch all you have to do is find the seagull hidden somewhere in this magazine (Not this page) and complete the coupon on the left below.



To win the Thursday lunch you must find the crab hidden somewhere in this magazine (again, not this page) and complete the coupon on the right below.



Completed coupons are to be posted in one of the two competition boxes, either at Raycrafts, 119 High Street, or Pretty's Newsagents at 4 Orchard Parade. One entry per coupon, copies not accepted.

Competition closes Thursday 23<sup>rd</sup> November at 10am. You can enter the competition multiple times, but you will need a separate coupon for each entry.

Good luck with your entries and thank you again to the selsey Private Club for the generous prizes.

For last month's competition, again a large entry pool, the seagull was on the Library advert on page 35, and the winner of two breakfasts at Penny's Cafe was Ms. Kim Taylor, with the winner drawn by Marie at The Fruit Basket, East Beach.

We hope Kim enjoys her prize, and thank you to Penny's Cafe for their generous prize.

**Name :**

**Contact phone number and full address:**

**I found the seagull on:**

**One entry per coupon Copies not accepted**

## SELSEY FOLK & MUSIC CLUB

Sing, Play, Recite or Just Listen

At Selsey Club, Coxes Road, Selsey  
6.30pm for 7pm.

Wed November 15<sup>th</sup>. Pay bar and raffle.

Everyone welcome. £3 p/p on door.



Welcome to the November issue of the Selsey Life. Did you enjoy your extra hour's lay-in on the 29<sup>th</sup>? You did remember, didn't you? Now though, of course, we are going home in the dark from work.

On this point, my I just mention again that this magazine is not our full time job, it is only done in our spare time, mainly on Fridays and Sundays. For this reason may we please ask, where ever possible, that if you want to contact us you do it by email to [selseylife@btinternet.com](mailto:selseylife@btinternet.com) please?

It has been a bit wet in October hasn't it? Probably making up for the rest of the year - mustn't complain. Someone somewhere is supposed to like the rain, so I was told as a child, I can't remember who - was it the farmers? Looking at the big puddles that are around, I get the feeling this may be an old wife's tale (it was from someone's old wife I would have heard it from).

This is not normally the place we list the rescues the Lifeboats undertake, but on Friday 6<sup>th</sup> October they made a special rescue - the wheel of my trolley fell off just as I was approaching the Lifeboat shop delivering the Selsey Life, and they kindly fixed it for me. Without their help the October issue probably would not have been delivered on time, so a big thank-you to those involved.



In the centre pages we have listed the Christmas fairs we have been told of, hope this is of help to see them all together.

We hope as always you enjoy the magazine, please let us know if there is something you would like to see included. Please send anything to [selseylife@btinternet.com](mailto:selseylife@btinternet.com).

Have a wonderful November, enjoy your bangs safely, and we look forward to seeing you in the combined December/January issue, due out on Friday 1<sup>st</sup> December.

**Please, we need your £1.00 to keep the magazine going - we are fully aware of the generosity of most of you, but it is unfair that some of you do not seem to want to pay for the magazine. We are only getting half the money for the printing costs. It is only £1.00 - is it too much to ask?**

**One night, after staggering home from the pub drunk, again, a husband slurs to his long suffering wife "I bet you can't tell me something that will make me both happy and sad at the same time,"**

**She thinks about it for a moment and then responds, "Your penis is bigger than your brother's."**

**Name :**

**Contact phone number and full address:**

**I found the crab on:**

**One entry per coupon Copies not accepted**

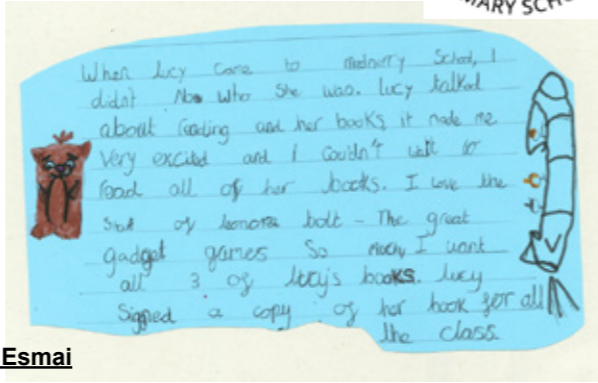


## Autumn term at Medmerry Primary School

Autumn term has got off to a brilliant start at Medmerry Primary School, with lots of exciting learning activities across the school.

### Author visit – Lucy Brandt

Brighton based children's author Lucy Brandt visited Year's 3, 4 and 5 in October and gifted the children with a signed copy of her popular book 'Leanora Bolt'. Her books have a theme on science, technology, engineering and mathematics which captured the imagination of Key Stage Two. Niamh from Year 4 (pictured with her copy of the book in Medmerry School's library) provided a write up from the day.



### Year 4 Djembe Drumming – written by Sophia and Esmail

In Year 4 we are doing drumming and it is so fun! Our teacher comes to visit from West Sussex to teach us lots of stuff about drumming. He teaches us lots of things. He teaches us about notes and tones.



Mr Whitby and Mrs Thorne also join in. We have learnt lots of things about drumming. We find it very fun.



### School Parliament – connecting Medmerry to the wider community

Each class voted to put forward two children to represent their class in School Parliament which is overseen by Mr Whitby. Year 6's Finley is the school's Prime Minister; he is supported by Lilly (Year 6) who is Deputy Prime Minister. School Council meet fortnightly to discuss a range of school and community matters to share their pupil voice and to connect and collaborate. They have already been busy connecting with the wider Selsey community. In celebration of Harvest Festival, School Parliament organised food donations across the school which they delivered to their local food bank.

### Reading buddies

Year 6 and Reception enjoyed an afternoon sharing stories and getting to know each other. Miss Taylor and Mrs Lee were excited to see such enthusiasm for reading amongst the children.



Join us for our next event

Chichester Grange care home, Chichester

Adjusting to a diagnosis of dementia

Tuesday 14th November 2023  
2pm - 4pm

Learn how your journey with dementia might unfold following a diagnosis and how to live positively with dementia.

Trusted to care.



Chichester Recycling Centre, Coach Road, Westhampnett

Autumn/Winter opening hours (1 October - 31 March)

Centre opening hours:

Monday - 9.00am to 4.00pm Tuesday - Closed Wednesday - 9.00am to 4.00pm  
Thursday - 9.00am to 4.00pm Friday - 9.00am to 4.00pm Saturday - 9.00am to 4.00pm  
Sunday - 9.00am to 4.00pm

To book please call  
01243 684863 or email  
caroline.thomas@careuk.com



**PLEASE WEAR A POPPY**

Anonymous

'Please wear a poppy', the lady said  
And held one forth, but I shook my head. Then I  
Stopped and watched as she offered them there,  
And her face was old and lined with care;  
But beneath the scars the years had made,  
There remained a smile that refused to fade.

A boy came whistling down the street,  
Bounding along on carefree feet.  
His smile was full of joy and fun,  
'Lady', said he, 'May I have one?'  
When she'd pinned it on, he turned to say,  
'Why do we wear a poppy today?'

The lady smiled in her wistful way,  
And answered, 'This is Remembrance Day.  
And the poppy there, is the symbol for  
The gallant men who died in the war.  
And because they did, you and I are free –  
That's why we wear a poppy, you see.

'I had a boy about your size,  
With golden hair and big blue eyes.  
He loved to play and jump and shout,  
Free as a bird he would race about.  
As the years went by, he learned and grew  
And became a man as you will too.

'He was strong, with a boyish smile,  
But he'd seemed with us such a little while.  
When war broke out and he went away,  
I still remember his face that day,  
When he smiled at me and said, "Goodbye,  
I'll be back home mum, so please don't cry".

'But the war went on and he had to stay,  
And all I could do was wait and pray.  
His letters told of the awful fight,  
I can see it still in my dreams at night.  
With the tanks and guns and cruel barbed wire,  
And the mines and bullets, the bombs and fire.

'Till at last, at last, the war was won –  
And that's why I wear a poppy son.'  
The small boy turned as if to go,  
Then said, "Thanks lady, I'm glad to know,  
That sure did sound like an awful fight.  
But your son, did he come back all right?"

A tear rolled down each faded cheek;  
She shook her head but didn't speak.  
I slunk away in a sort of shame,  
And if you were me, you'd have done the same.  
For our thanks in giving are oft delayed,  
Though our freedom was bought, and thousands paid!

And so, when we see a poppy worn,  
Let us reflect on the burden borne  
By those who gave their very all  
When asked to answer their country's call  
That we at home in peace might live.  
Then wear a poppy! Remember – and give!



**Selsey Pavilion Trust Awarded £50,000 From Garfield Weston Foundation**

The restoration of the Selsey Pavilion has just taken a big step forward thanks to a £50,000 grant from The Garfield Weston Foundation.

The restoration of the Selsey Pavilion has just taken a big step forward thanks to a £50,000 grant from The Garfield Weston Foundation. The grant is a big vote of financial confidence in the Selsey Pavilion Trust's ambition to restore and revive the building back to its former glory as a showpiece on Selsey's High Street.



Since the Selsey Pavilion Trust was formed in 2017, the Trustees have concentrated on purchasing and reviving this unique building as a community arts and heritage centre. After a lot of work and determination, the Trust is nearing the first critical milestone through the support and considerable donations from the Government's Community Ownership Fund, National Lottery Heritage Fund, Selsey Town Council, and now the generosity of The Garfield Weston Foundation.

"The Garfield Weston Foundation is a major funder that gives money to support a wide range of charities across the country. To have their support at this early stage is incredible and demonstrates just how much of an impact the Pavilion can make to Selsey and the wider Manhood Peninsula," said Selsey Pavilion Trust Chairman Christian Skelton.

"We're working hard to purchase the Pavilion by the end of the year, and this grant will help us to hit the ground running with vital repairs in the spring. But there is still a way to go before we can fully open the doors to the public."

Constructed in 1913, the Selsey Pavilion, with its Art Deco façade, was the central attraction on Selsey High Street for over 60 years. Sadly, like so many similar theatre buildings, it fell into decline with the advent of television, and the doors finally closed for good in 1974.



However, miraculously, the Selsey Pavilion has survived largely intact and is today home to the very popular 'Chaplin's Coffeehouse', which will continue as a crucial part of our plans.

'We know we still have a long way to go until the building can welcome the community all year round, but we are delighted for the financial support and community spirit that has started us on the road from ambition to reality. From these strong foundations, we are a huge step closer to opening the doors of the Selsey Pavilion for good,' Christian added.

The Selsey Pavilion Trust is grateful for the support of The Garfield Weston Foundation and all other donors who have helped to make the purchase and restoration of the Selsey Pavilion a reality.

**FREE QUOTATIONS  
MADE TO MEASURE  
QUALITY CONTROLLED  
OVER 35 YEARS  
EXPERIENCE**

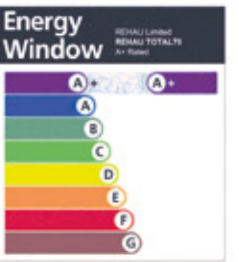
# GS WINDOWS

Proud members of **Checkatrade.com**  
Where reputation matters

Your local manufacturer and installer of high quality windows, doors, porches and conservatories in **Rehau** pvcu and **Smarts** aluminium

**ORDER NOW for a FREE UPGRADE to A rated Triple Glazing from any A+ rated Double Glazed Package.**

Price includes VAT, installations and a fully comprehensive 10 year insurance backed warranty	<b>NEW</b> A+ RATED TRIPLE GLAZED	A RATED TRIPLE GLAZED	A+ RATED DOUBLE GLAZED	A RATED DOUBLE GLAZED	<b>NEW</b> B RATED DOUBLE GLAZED
Any 3 Windows	£2,450	£2,340	£2,230	£2,175	£1,885
Any 4 Windows	£3,305	£3,115	£2,925	£2,900	£2,505
Any 5 Windows	£4,035	£3,905	£3,770	£3,625	£3,135
Any 6 Windows	£4,895	£4,685	£4,470	£4,345	£3,765
Any 7 Windows	£5,760	£5,465	£5,165	£5,072	£4,382
Any 8 Windows	£6,630	£6,205	£5,865	£5,800	£5,015
Any 9 Windows	£7,355	£7,020	£6,700	£6,525	£5,640
Any 10 Windows	£8,215	£7,805	£7,395	£7,250	£6,275
Any 11 Windows	£8,940	£8,590	£8,230	£7,970	£6,895
Any 12 Windows	£9,805	£9,365	£8,930	£8,700	£7,525
Any 13 Windows	£10,680	£10,155	£9,625	£9,425	£8,155
Any 14 Windows	£11,535	£10,930	£10,320	£10,155	£8,780
Any 15 Windows	£12,265	£11,705	£11,165	£10,875	£9,405



Reg. No. 4419 SC14  
Review Date: 12/2019  
BFRC



**TRIPLE GLAZED**  
• Increased security  
• Saves money  
• Saves energy

**ALUMINIUM BI-FOLD DOORS**

3 part  
Any colour  
Double glazed  
upto 3.2 mtrs wide  
**£3,990**  
Fitting & VAT included

**FRENCH & PATIO DOORS**

Upto 1.9m wide x 2.1m high  
**£1,375**  
Fitting & VAT included

**SASH WINDOWS**

Any size A RATED  
double glazed  
white PVCu  
vertical sliding  
Sash windows  
**£995 each**  
Fitting & VAT included  
Example: 4 windows = £3,980

**FLUSH CASEMENT WINDOWS**

**NEW**  
3 windows A RATED  
**£2,495**  
extra windows  
add 15% to the  
above prices  
Fitting & VAT included  
Example 4 windows = £3,335

**COMPOSITE DOOR OFFERS**  
**£1,375 or 2 for £2,640**

Any Composite Front Door & PVC  
Back Door Includes any glass pattern  
**£2,125**  
Fitting & VAT Included

**0800 652 4576 or 07825 066727**  
**FREEPHONE ANYTIME**

Proud members of  
**Checkatrade.com** **9.8/10**  
Where reputation matters

**www.gswindows.co.uk**

**New CONSERVATORY**  
or replacement roof,  
windows or doors

Example: 3x3m = **£12,995**  
excluding building work

These offers cannot be used together with any other offer. Example shown is white pvcu, including VAT and installation. Special finishes and colours available. Toughened safety glass, obscure glass and trickle vents not included. Each section of a bay window counts as one window & bay charges apply. Terms and conditions please ask for details. Images only for illustration. We reserve the right to withdraw the offer without notice. • Offer for white windows to a maximum size of 2.5m x 1.3m. • Offer for Sash Windows to a maximum size of 1.4m x 1.8m

# COME AND SAY HELLO



Selsey Women's Institute would like to invite you to a complimentary visit to our WI.



We meet on the second Wednesday of each month, at 1.45pm in the Town Hall.

The WI provides fun and friendship, plus interesting talks and a wide range of activities including, Book Club, Theatre Trips, Coffee Mornings and Lunches.

We would be delighted to see you.

If you would like more information, please contact

Ann Jones 01243-607736 Heather Coleman 07921-525204 selseywomeninstitute@gmail.com

# u3a Selsey

learn, laugh, live



## Mulberry Divers

# The Local Shoreline

at our next

## Open Meeting

Friday 24<sup>th</sup> November  
1.30 for 2.00pm

at the Selsey Centre, Manor Road

Refreshments - Admission ticket prize - Quiz - Raffle  
Non-members - admission £3.00

Looking for a rewarding new role?  
Want to make a real difference in the lives of people living in Selsey?



## Care at Home RECRUITMENT EVENT

Come talk to the friendly people from local at-home care companies and other agencies.



8th November  
12pm to 4pm  
The Bubble Tea Bar  
High Street  
Selsey

### ARE YOU...

- Kind and compassionate
- A good listener
- Calm under pressure
- Good at communicating
- Trustworthy
- Reliable
- A team player
- Keen to learn

Come along and find out if you have what it takes to succeed in a rewarding career in care at home.



For more information: operations@selseycommunityforum.uk



# CARAWAY HOUSE

CARE HOME

# HOME OPENING EARLY 2024



## MARKETING SUITE OPENING JANUARY 2024 GET IN TOUCH TO REGISTER YOUR INTEREST

# LUXURY LIVING WITH EXCEPTIONAL CARE

Nestled in the beautiful seaside town of Selsey, Caraway House Care Home is a brand new luxury care home, offering its residents first-class accommodation paired with exceptional care.

### Residents of Caraway House Enjoy:

- 70 LUXURY EN-SUITE ROOMS | RESIDENT CHEF | CAFÉ | LANDSCAPED GARDEN
- BALCONY TERRACES | CINEMA ROOM & ENTERTAINMENT SUITE | HAIR SALON & SPA
- PRIVATE DINING ROOM | VARIED ACTIVITIES PROGRAMME AND MUCH MORE

For further information for yourself or a loved one:  
T: 01243 960800 | E: info@carawayhousecare.co.uk  
Manor Road, Selsey, Chichester PO20 0GF

[www.carawayhousecare.co.uk](http://www.carawayhousecare.co.uk)

RESIDENTIAL | NURSING | DEMENTIA | RESPITE CARE

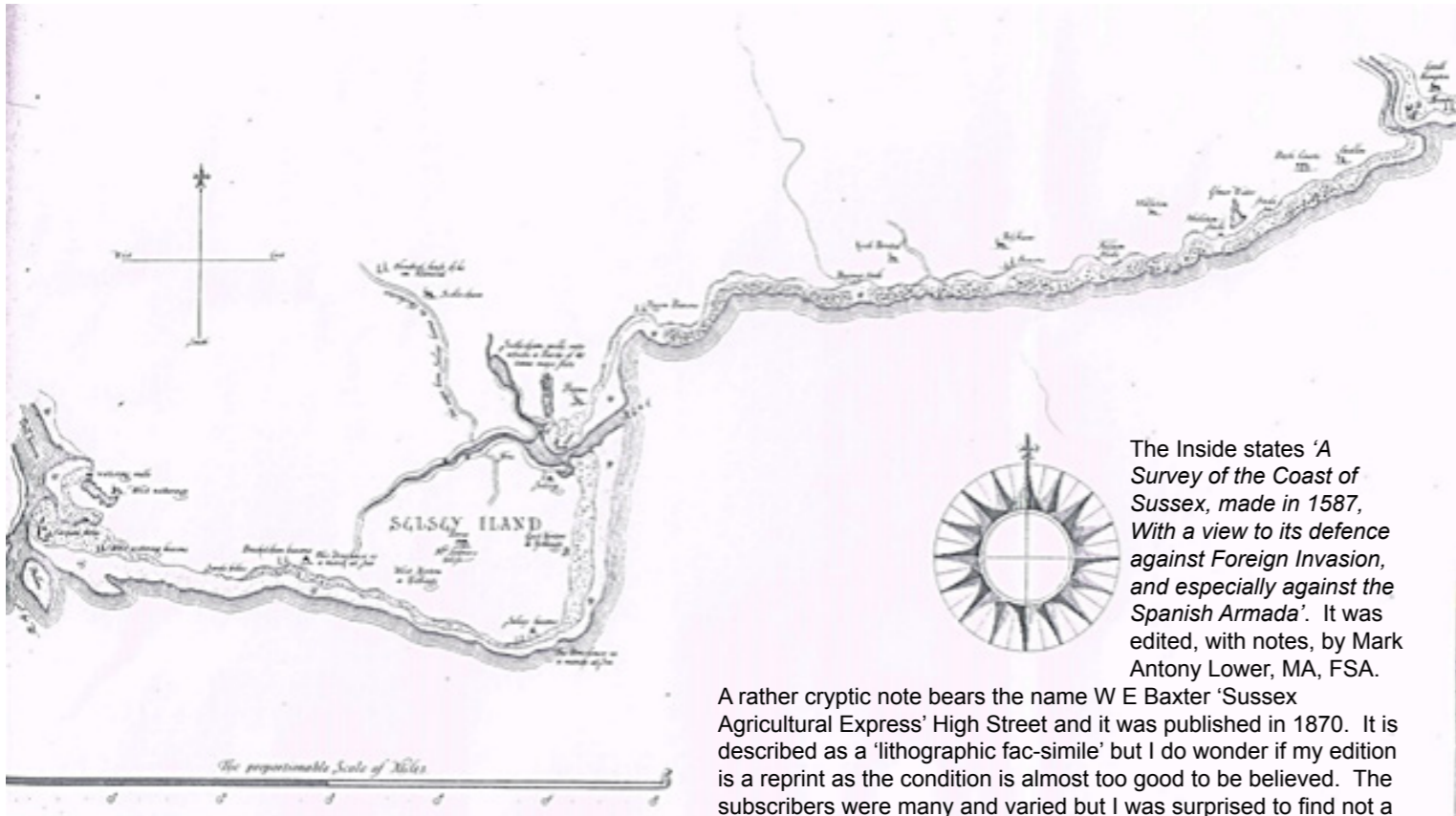
Images are for illustrative purposes but are representative of the standards you can expect at Caraway House Care Home.

**SELSEY FOOTBALL CLUB** presents  
**Christmas Prize**  
**Bingo Night** 7  
TUES DEC 12th  
Doors open - 6.30 pm  
Eyes down - 7.30 pm  
at  
**The Embassy Club - Waterfront Complex**  
**Scal Bay Resort PO20 9BH**  
Loads of great prizes • Huge raffle • Everyone welcome  
Free parking

# A TALE OF THE SPANISH ARMADA AND ALFRED RUSBRIDGE CHAPTER 1

One of Selsey's traditions is that a ship from the Spanish Armada foundered and its timbers used in a house on the Manhood Peninsula. There are four aspects to this research – Alfred, the Armada, modern knowledge and historical records. But where to start? I decided to start with the Armada Map which is one of the those found in the pocket at the back of Selsey Bill 1911 by Edward Heron-Allen.

Much to my amazement I found EHA'S source document online – 'A Survey of the Coast of Sussex in the Time of Queen Elizabeth'.



The Inside states 'A Survey of the Coast of Sussex, made in 1587, With a view to its defence against Foreign Invasion, and especially against the Spanish Armada'. It was edited, with notes, by Mark Antony Lower, MA, FSA.

A rather cryptic note bears the name W E Baxter 'Sussex Agricultural Express' High Street and it was published in 1870. It is described as a 'lithographic fac-simile' but I do wonder if my edition is a reprint as the condition is almost too good to be believed. The subscribers were many and varied but I was surprised to find not a

single Selsey name. There were several 'Viscounts' though as well as Army Officers and prestigious organisations such as the Sussex Archaeological Society and Chetham Library, Manchester.

The Survey was made by Sir Thomas Palmere, Knight, and Mr. Walter Couerte, Esquire both of whom were Deputy Lieutenants of Her Majesty's County of Sussex.

The entry for Selsey is as follows:

*The like fortification also for the like ordinance in the Isle of Selsey between the Beacons and the Church at B. Also the like at Pagham poynte faste by the Poynte at C.*  
*All the coaste alongste from Cakam stone, and likewise the Isle of Selsey, and so unto Pagham Beacons, for the moste parte good landinge and therefore not sufficiently guarded wth the fresse in the speciall places at A. B. C. but gave made of Trenches & flankers artificiallye founded to be reared in moste convenient partes for small shotte.*  
*The little Hampton haven at D is sutable to Arundell to be all fortified for the planting of many musketts and of Cannon for the better guardinge thereof and likewise in Pagham Beacons and high garrow no good landinge but at a smolke Stades and byn at full sea a little before onflowe and therefore no made of subterfuges but at speciall places where Stades or Beacons are.*  
*This murther was flower small in his place as in all the other followinge also founde betweene full sea and lowe water covered*

*'The like fortification, also for the like ordinance in the Isle of Selsey between the Beacons and the Church at B. Also the like at Pagham poynte faste by the Poynte at C.*

*All the coaste alongste from Cakam stone and likewise the Isle of Selsey, and so unto Pagham Beacons, for the most parte good landing, and therefore not sufficiently garded with the partes in the special places at A, B, C but have need of Trenches or flankers artificially founded to be reared in most conveniente partes for small shotte.*

Note: Flankers were side or lateral earthworks.'

### 'TOPOGRAPHICAL NOTES IN CONNECTION WITH THE SURVEY

Selsey Island, or rather Peninsula, has also greatly changed. The old church of Selsey, with the ferry and the hamlets of West and East Norton are noted, as also a mansion called 'Berie' which is stated to be 'Mr Lakner's (Lewknor's) house'. The highway from Selsey to Chichester is marked, as are Sidlesham church and the Hundred-house dyke 'in Manwed', that is the hundred of Manhood. Here two beacons are shown, and two others at Selsey Bill, where another dovehouse occurs as a seamark.'

We can see from the map that Selsey is at Church Norton together with a picture of the chapel. The rest of the peninsular is empty. The Lewknor family was a prestigious one as,

during the reign of Henry VIII, they had been granted the lease of Selsey Park 'for three lives' by Bishop Sherborne and a later Lewknor had leased Selsey Grange from the Crown. Perhaps the most interesting note (which I have transcribed into modern English) is 'Sidlesham Mill, into which a ship of 40 tonnes may fit'.

The History of Pagham in Sussex (in three volumes) by Lindsay Fleming MA, published privately in 1949, tells us that in 1377 a Spanish Ship came ashore at Pagham with a cargo of rice, pilgrims' cloaks, staves for crossbows, sponges, lambskins, alum, ginger, pepper ox-hides and 2 little bags full of saffron'. In fact, trade with Spain had been undertaken since Roman times so we can, with some certainty, establish the fact that Spanish ships in Pagham Harbour were no new phenomenon.

In the same publication, there is a report that in the 14<sup>th</sup> or early 15<sup>th</sup> century 'the half of a boat came floating into Wydering harbour towards the Bishop's mill at Newehauene (near Crab & Lobster)' which was recovered and used to repair the mill-weir' so it was customary to use whatever useful materials came to hand.

So far, so good. We now turn our attention to a different book containing maps contemporary with the Armada.

'The Seafarers Series, The Armada, Author Bryce Walker – Editors of Time Life Books, Amsterdam. Copyright Time Life Books 1981. Time-Life Books. Closed 2001,

Page 105

Map. Credit National Maritime Museum, London  
The map is contemporary with the Armada



'As the Armada hovers dangerously close to the Isle of Wight in a dead calm, the fleets prepare to join in battle, towed by small boats, the English galleons move toward the enemy, while the Spanish galleasses pull away from the crescent under the power of oarsmen.'

Page 107 'The entire Armada was gently nudged across the mouth of the Solent and toward the English Mainland'

The pale orange flower shape is the Isle of Wight. The galleon shape adjacent to the crest is the Spanish Fleet.

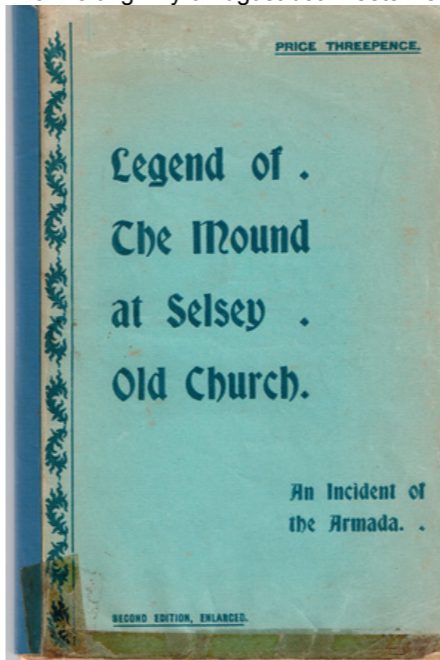
The Duke of Medina Sidonia was Alonso Pérez de Guzmán (born Sept. 10, 1550—died 1619, Sanlúcar, Spain), and was commander in chief of the Spanish Armada of 1588.

Armada 1588 – The Spanish Assault on England by John Barratt (copyright 2005) and published by Pen & Sword Books Limited is a chronological treatise on the daily events of the Armada's progress. It not only tells us that the Battle for the Solent commenced on 4 August, but that the 'winds were light, probably from the west; sea calm'.

More importantly, from our point of view, it contains the names of the ships which took part, their tonnage, how many guns were on board, how many soldiers and mariners, the name of the Commander and the ship's fate, where known. There is no Cartagena. I have contacted the The Naval Museum in Cartagena, Murcia enquiring if there was ever a ship bearing this name but, to date, have received no reply.

Remember the tonnage of ships which could berth in Pagham Harbour? There are only 4 ships of around 40 tonnes in the Armada. The Patache de Miguel Suso – 36, El Espiritu Santo – 33, Nuestra Senora de Guadalupe – 1, Magdalena – 1. No-one knows what happened to any of them. I also checked online and drew a blank there too.

There was a battle on 4 August but neither side wanted to continue the fighting as they were short of ammunition so 5 August was a day of waiting. By 6 August both fleets were moving towards the Straits of Dover and by 4pm the Armada had dropped anchor 4 miles from Calais and 24 miles from Dunkirk.



Having inspected the modern version of events let us now look at those recorded by Alfred Rusbridge. Alfred was born and bred in Sidlesham and I will be including a potted history of him later. Suffice it to say that he came from a very old Sidlesham family and was born and died in the same house which is now Quay House. Not only was he an expert on bee-keeping but he was also the amateur local historian, following in the footsteps of his father before him.

Alfred Rusbridge wrote a 'booklet entitled 'The Mound' at Selsey Old Church – An incident of the Armada' I have two versions of this – one purports to be 1906 but, in fact, the Roman numerals are incorrectly formatted. It is, however, an original document priced at 3d and is the Second Edition, Enlarged. The other is taken from the Net and is dated 1909 and is the 'Author's Complete Copyright Edition. Revised and Enlarged.' In case you are wondering the text was taken from the author's work on Old Pagham Harbour.

Page 17 describes a veritable 'Dad's Army' with 'upwards of four hundred men, ranging in age from seventeen to seventy, of all sorts and conditions, comprising gentlemen, farmers, tradesmen, labourers and grooms are being drilled. The drill-sergeant has no easy time of it, he is hot and perspiring...'

They are in the meadow in front of the Mound (now completely wooded). They notice a party of individuals coming along the lane and it is obviously a wedding party.

'As they reach the Churchyard gate the bridegroom, ...leaves the ranks, followed by a hearty round of good wishes from his comrades in arms, ...and is soon joined by his future father-in-law from yonder barracks'. 'The happy pair both lived to become octogenarians.'

There follows pages of action following the sighting of the Armada 'from Bill Point ...steering a course up Channel.' One of the Spanish ships received a broadside 'so well aimed...that every ball seemed to find its destined billet. Down goes the main-mast at the instant with a crash: the mizzen, too, is badly sprung and sways dangerously now that the rattlins on the starboard side are shot away!'

In order not to delay the advance of the Armada, 'and this the Admiral in supreme command, the Duke of Medina Sidonia, in his most immaculate wisdom would be very loth to do....The ship is 'one of the finest in the fleet, with full five hundred fighting men on board, officered by scions of the noblest houses in Murcia, ranking high among the bluest blood in Spain'. The ship sailed from Carthagera and she had plenty of crew and ammunition on board so she was left to her fate. After more pages describing the ensuing battle 'the golden flag of Spain is lowered...Captain Peachey, the officer in command of the fort here ...offers the services of his men to take the prize round to Portsmouth Harbour, where she was soon re-fitted for active service and thenceforward constituted a valuable addition to our fleet.'

The prize proved to be the 'Carthagena'. Tradition is silent as to the name of the victor, or that of her captain, beyond that in after years the brave old seaman purchased an estate, in the Mainwood district, which he named after his prize...

But where is this estate?

My interest in the topic was triggered by John Byrne – Selsey Life's poet - who wrote to Selsey Life with a query which was duly forwarded to me. This was in mid- April this year! John found a building called Carthagena Farm in Bell Lane in Somerley/Birdham.

Mark Anthony (aka Antony) Lower wrote a Compendious History of Sussex, Topographical, Archaeological & Anecdotal in two volumes in 1870 but makes no mention of the Armada which is strange considering he worked on the Armada Map book in the same year. Various copies are available on-line but at a price!

In 1898 Adolphus Ballard in his History of Chichester states that 'Wen the Armada was expected the entrance to Chichester Harbour ws fortified by the erection at Cakamstone (sic) of a battery with two sacres and one demiculverin; and similar batteries were erected at Selsey and Paghams. But these fortifications were soon allowed to decay, for in the summer of 1599 it was reported that Spanish galleys were accustomed to go into Chichester haven. No mention has been made of the Armada conflict itself.

Miss L F Ramsey produced a booklet in 1930 which was printed by Moore & Wingham, 39 East Street, Chichester entitled The West Wittering Women's Institute Book. Her full name was Lillian Fairbrother Ramsey, a maiden lady and, according to the census returns, a journalist. This was unusual in itself but one of the publications to which she contributed was Sufrage! She died aged 97 in 1974. How I wish I had met her!

In her booklet she mentions Carthagena Farm at Sidlesham and it is here we find that 'Local tradition says that the house has some of the timbers of Carthagena built into it' and cites Arthur Rusbridge of Sidlesham as the source. I doubted the Christian name but there was, indeed, an Arthur Rusbridge who was alive when the booklet was produced. Alfred Rusbridge was also still alive, dying in 1933. Lillian was not only the author but also held the copyright for her work.

E V Lucas' book Highways and Byways in Sussex, originally published in 1904, reprinted 1935, states 'So much for West Wittering and conquerors. The villagers were more fortunate when the Spanish Armada was on its way, for one of the vessels, the Cartagena, ran ashore here and was wrecked, and there is a legend that some of her timbers were employed in building the house called Cartagena Farm that still stands in the neighbouring parish of Sidlesham.' He goes on to cite Miss L F Ramsey as the source.

The Sussex County Magazine, Volume VI, January to December 1932 contains a couple of interesting items. On page 405 Edward Shoosmith firstly describes the 'story' as we know it but goes on to say: It would be interesting to ascertain if the parish registers of Selsey record a marriage on that date and the names of the man and the woman who were thus jointed together at such a supremely important hour in the annals of English history. Since weddings at that period usually took place at eleven o'clock in the forenoon, we can gauge the exact hour when the Armada was first sighted off the Sussex coast...I am unable to find that this story was published before 1930, it may prove to be an instance of Sussex family tradition that lived through oral transmission for three hundred and forty-two years ere it was placed on record by Mr Arthur Rusbridge.'

Do I feel smug? You bet I do!

On page 476, we find F Fleetwood Buss of Horsham. This is Francis Fleetwood Buss, Clerk in Holy Orders, who was married in Selsley, Gloucestershire.

**'MISTAKES ABOUT THE ARMADA**

Mistakes about the Armada are not infrequent, Even Macaulay is in error when in his Armada ballad he describes the Spanish feet as being sighted off Alderney 'beyond Aurigny's Isle' i.e. French name for Alderney, miles away from its actual course.

Therefore in reference to Mr Shoosmith's interesting communication about the Carthagena, I should like to enquire:

1. Whether the Carthagena actually appears in the Spanish records as a ship attached to the Armada?
2. Whether it can be shown that there was any naval engagement off the Sussex coast on the date in question?

On July 25<sup>th</sup> the Armada was engaged, with the Spanish fleet off the Isle of Wight whence it sloped diagonally across the Channel to the Calais Roads. (Transcriber's note: My sources say the Spanish Fleet was off the Scilly Isles at that time).

Records show that other Spanish ships not belonging to the Armada were wrecked off the English coast during the 16<sup>th</sup> century. Hence the Carthagena, supposing the tradition to be well founded, may have been one of them.'

In 1946 The Rev. H W Haynes of Sidlesham produced Sidlesham Past and Present and he also addresses the story of the Armada on page. 70. He quotes 'The Selsey Mound', A Rusbridge' as his source of the Defenders, the marriage and the fate of the Spanish ship adding: The captain of the victorious little vessel settled down in the Manhood and built himself a house, which he named 'Carthagena'.

A mistaken idea used to be in circulation that this house was built of the timbers of the captured ship, but this could not have been the case if what has been above written is the true story of the Carthagena'.


Look out for Chapter 2 in the December/January issue of Selsey Life!

This article is the intellectual property of the author and may not be copied or used in any way without her written permission.

©Ruth C Mariner  
01243 604698  
[ruthm@ruthcmariner.co.uk](mailto:ruthm@ruthcmariner.co.uk)


Every attempt has been made to contact the relevant parties concerning copyright and permission to use source material with a singular lack of success. If I have infringed anyone's copyright then please let me know and I will acknowledge it in Chapter 2.

If Mrs Elizabeth Carter of Earnly would like to get in touch, I would be delighted to here from her regarding her ancestor Alfred Rusbridge..



**The Herbert Protocol**

Caring for vulnerable people, including those with dementia or Alzheimer's can be challenging.



There is a risk that at some point they may go for a short walk, either into the garden or up the street but may find they then get lost and go missing.

That is why it is important to plan ahead in order to keep them safe.

The Herbert Protocol is a form that carers, family or friends of a vulnerable person, or the person themselves can fill in. It contains a list of information to help the police if the person goes missing, including:

- medication required
- mobile numbers
- places previously located
- a recent photograph

Keeping a completed form saves the worry of trying to recall the information during the stressful time of someone going missing. It also saves time for the police, allowing our search to start sooner. The police only need the form at the point the person is reported missing. There is no need to hand it to police before then and the form will be returned to you once the person is found.

The initiative is named after George Herbert, a war veteran of the Normandy landings, who lived with dementia. He sadly died whilst 'missing', trying to find his childhood home.

If you would like more information or would like to download the form, then please visit our website:  
<https://www.sussex.police.uk/notices/af/herbert-protocol/>


**Front office opening hours**

**Chichester:**  
Chichester Police Station,  
Kingsham Road, Chichester, PO19 8AD  
Open: Monday - Saturday 9am -8pm.

You can contact your local team in the following ways:  
Call us: on 101 to report a crime or 999 if it's an emergency.  
Email: [Chichester@sussex.police.uk](mailto:Chichester@sussex.police.uk)

**Midhurst:**  
Midhurst Police Station  
Bepton Road, Midhurst, GU29 9NB.  
Open: Monday - Friday 10am – 2pm.

You can contact your local team in the following ways:  
Call us: on 101 to report a crime or 999 if it's an emergency.  
Email: [Arun@sussex.police.uk](mailto:Arun@sussex.police.uk)



**St. Peter's Church  
Event Report**

**'QUEEN 'Tribute Event 2023**

Once again we say Thank You to Everyone for the support you always give to our Church Fundraising events. We also say Thank You to SELSEY TOWN COUNCIL who awarded us a grant to cover the cost of hiring the Selsey Centre.

When we arrange a 'Tribute' event it is sometimes based on received recommendations from yourselves, or we check the 'Tributes' available, the cost, view a short demo clip and then opt for which we think will be most popular within the Community-not always an easy choice. We try our best to get it everything right but sometimes best made plans go a bit awry. The extent of my knowledge of 'Pop' concerts was Georgie Fame, The Animals and Chuck Berry at Woolwich many years ago! I did not even realise the difference between a Rock and a Pop Group until now, but popular though they are, if we had ABBA every time you might lose interest in coming! It was so good to see that you came in ready to enjoy yourselves, complete with 'picnics' - it really was wonderful- like Friends Re-united greeting each other.

Tribute Acts are never as good as the original otherwise they would have been the 'Stars' and sometimes we fixate (including myself) on the original members and expect the same- Freddie the original, be he loved or hated, was so charismatic nobody could truly emulate him. The 2nd half was better and lots of you joined in with the singing and dancing. As expected there have been mixed responses to this event BUT having said that, overall those who came for the music and the opportunity to socialise with friends and relatives said they had a good evening. Our thanks must go again to all who purchased raffle tickets and to those who donated the prizes.

We are already working on a programme for 2024 and details will be initially be in Selsey Life early next year. We really hope to see you there again. In the meantime, it is very early I know, but may we wish you, your families and friends, a Very Happy Christmas and all our Best Wishes to you for 2024.

**Seal Island Wool craft markets**



**11th and 25th of November  
Methodist church hall 9-1**

**wool-haberdashery-knitwear  
knit and natter group  
refreshments  
handmade crafts**



**tables available:- call: 07785546250 to book**

We recently passed that time of year when all political parties head to conference, and there were a number of important takeaways I wanted to share with everyone in Selsey.

As the Secretary of State for Education, my team and I are making huge progress on some really important areas for pupils and parents, launching the largest ever expansion of childcare provision in history, as well as more apprenticeship routes than ever at institutions like our own Chichester College and University.

These past few weeks we've gone even further, introducing a ban on mobile phones in schools, to crack down on classroom distractions and cyber bullying, and consulting on the implementation of minimum service levels for our universities, to ensure our students get the lectures they pay for and their degree marked in time for graduation. That's not to mention the work underway on the new Advanced British Standard qualification, which will go to consultation in autumn and bring together the best of A Levels and T Levels in one qualification.

These steps will make a real difference in our classrooms, and I look forward to seeing it myself when I next drop by Medmerry Primary!

It was also a pleasure to visit Brent Lodge Wildlife Hospital recently, an amazing local charity committed to providing vital treatment and care to a range of wildlife in Chichester and the surrounding area. Whether it's helping a kestrel mend a broken wing or rehabilitate a hedgehog, all wildlife has an important part to play in Chichester's vast ecosystem, and the work of the team here is really important to protect that balance.

If you do find an animal in need of help you can report it to the team, either online or via their advice line at 01243 641 672. You can also support this local charity by making a small donation, volunteering, or giving tins of wet cat and dog food - chicken is a favourite! Find out more about this on their website at: <https://www.brentlodge.org/>



Gillian Keegan MP



Photo contributed by Pony Moore

Members of SELSEY Royal Naval Association branch honoured two long serving members at a lunch in Portsmouth's Royal Marine Hotel. Chairman, Chris Read presented a Certificate of Appreciation to Brian Hall, a founder member, after 45 years in the RNA. Fred Flood, who has now retired after 43 years of service, was also presented with a certificate and this group photograph. Proof of the enduring comradeship the RNA provides for members and families.

The Selsey RNA branch meets every 2nd Tuesday of the month at 8 p.m. at The Selsey Club in Coxes Road (membership of the Club is not a requirement, it is optional). They have many and various social occasions. If anyone from any branch of the Royal Navy wishes to join us, irrespective of rank/rating or length of service, you will be made most welcome. Call Hon Sec, Gavin, on **01243 607485** for further information. There is no subscription fee or obligation to regularly attend.

**ONCE NAVY ALWAYS NAVY**

**Selsey Venture Club**



Here we are already hurtling towards the end of another year with exciting prospects for the Venture Club as we look forward to the arrival of our new electric minibus. We will be trading in one of our current fleet, when the new bus arrives at the end of this year or the beginning of next.

We hope that this will be a more environmentally friendly way of doing the short runs round Selsey, which makes up most of our service to members.

September saw the last outing of the season – a Mystery Tour which kept everybody guessing on a lovely scenic drive through Fishbourne and Lavant, past Goodwood Race course to an afternoon tea stop at West Dean Gardens. In the new year we will be planning the next series of outings so do let the office know if you have any good ideas.



Thanks to Alison for organising the Christmas Lunch venue at Chichester College. This gives members something to look forward to at the start of December and a first round of turkey and Christmas pudding.

**ARE YOU A DRIVER WITH A LITTLE TIME TO SPARE?**  
 We are always on the look out for more drivers for our minibuses.  
 With an ordinary licence, you can drive our smaller bus and with a D1 licence, you can drive any.  
 Training is given.  
 We need drivers who can be part of our regular rota of daytime trips and those who can provide back-up help from time to time.  
 Leave your name and number with the office staff on **01243 605115**.

**Saturday 18 November**  
**The Mulberries present**  
**Lightning Brothers Soul Band**



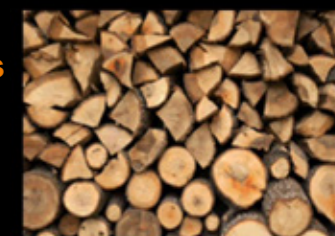
at the Pagham Village Hall,  
 Pagham Road, Pagham PO21 4NJ  
 at 7.45 pm. Wheelchair access

Tickets in advance £8-00  
 on **01243 262833** or **07833 971620**  
 Bring your own food and drink  
 Proceeds to local charities

- 1) Who wrote the play Spider's Web?
- 2) Who wrote the long poem "Venus and Adonis"?
- 3) In which book will you find the "Pan-Galatic Gargle Blaster"?
- 4) What was the name of Jane Austen's only sister?

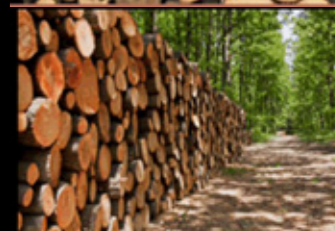
**WEST SUSSEX LOGS**

**Seasoned Hardwood Logs**



**Sustainably produced,**

**Locally sourced**



**Tel: 01730 814751**

**or Mobile: 07950 035997**



**Tenchley Manor Nursing Home**  
 Ursula Square, Selsey, Chichester PO20 0HR

Enjoy peace of mind and a sense of belonging at Tenchley Manor Nursing Home. You can depend on our caring and compassionate team of specialist staff to cater for your every need.

With our round-the-clock nursing care, you won't have to worry about a thing. Just sit back, relax and enjoy seaside living at our idyllic beach-front home.

01243 976653  
[healthcarehomes.co.uk](http://healthcarehomes.co.uk)

**J.W Smith**  
**CHIMNEY &**  
**LOG BURNER SWEEP**  
**07769211143**  
**SERVING**  
**W.Sussex & Hampshire**

**SUSSEX GRANGE**  
*Care with Kindness*  
 Your care, your choice

**Personal Home Care**  
**Residential Care Home**

[www.sussexgrange.co.uk](http://www.sussexgrange.co.uk)

14 Vincent Road  
 Selsey  
 PO20 9DH  
 01243 60 62 62



## Slugs

by Michael Blencowe for Sussex Wildlife Trust

I've had a strange fascination with slugs since I was a little boy. Back then I believed that they were homeless snails that had lost their shells. It turns out I was right. Sort of. The whole eviction process had started as far back as the murky Mesozoic when some land snails cast off the shackles of a shell and evolved into slugs for some truly independent living. Sure, shells are great for protection and will help you to avoid drying out but they're clunky and require calcium to construct. Without them you can roam anywhere and (to namecheck another mollusc) the world's your oyster.

The slug's shell has never been completely lost — a fragment remains hidden under their skin, a tiny,



Great Black Slug  
© Nick Upton 2020Vision

shrunken souvenir of their snail ancestry. Another link to their slimy dynasty is that all slugs, like all snails, are both male and female. As hermaphrodites, they possess both sets of sexual organs and this means that, if the situation dictates, they can go it alone and simply self-fertilise to produce their offspring. A true state of independence. Self-fertilisation creates a clone - or in a slug's case hundreds of clones – but the problem with inbreeding is a lack of genetic variability. Clones all possess the same weaknesses. An entire slug population can be wiped out by the same parasites and pathogens. To produce varied and resilient offspring, most slugs go in for the more old-fashioned approach of finding a partner for a quick rustle in the undergrowth.



Slug  
© Zoe Brown



Leopard Slug © Felicity Wehrle

But one garden slug species has turned this chore into art - a flamboyant celebration of a lack of independence. The spotted and striped Leopard Slugs start their performance by chasing each other around a tree, giving each other sonic, sensuous strokes and cheeky nibbles. Then they climb, shimmy along a branch, and descend on a rope made of their own mucous. Here, hanging in mid-air, the slugs evert their sexual organs, entwining them to create a moonlit globe. This graceful, balletic trapeze performance must be one of the most mesmerising sights on our planet. If you search hard enough, you can find beauty in the strangest places. Still, if I was strolling through the woods at night, I'd hate to walk into it face-first.

Sussex Wildlife Trust is an independent charity caring for wildlife and habitats throughout Sussex. Founded in 1961, we have worked with local people for over half a century to make Sussex richer in wildlife.

We rely on the support of our members. Please consider joining us. Your membership will help us challenge decisions that threaten wildlife, care for more than 30 nature reserves, and inspire the next generation about the wonders of the natural world. It's easy to join online at [sussexwildlifetrust.org.uk/join](https://sussexwildlifetrust.org.uk/join)

### RSPB Events for November 2023



CHICHESTER Thursday 23 November

Illustrated Talk by Bernie Forbes, President of the Sussex Ornithological Society and Tour Leader, on 'Birds and Wildlife of Costa Rica' to the Chichester Local Group at The Pallant Suite, Masonic Hall, South Pallant, Chichester, PO19 1SY at 7.30 pm.

Entrance members £2-50/visitors £5 07545 376074  
wheelchair access

### SUSSEX WILDLIFE TRUST November

NO PLANNED EVENTS FOR THE CHICHESTER  
AREA AT PRESENT

- 5) Which three Henry Miller books form "The Rosy Cricifixion"?  
6) Which parts of the Venus De Milo's body are missing?  
7) Who created Noddy and Big Ears?  
8) Which British PM crops up in Paul Theroux's The London Embassy?



### SNOWDROP TRUST CHARITY CHRISTMAS CARDS

We carry the full range of the Snowdrop Trust Charity Christmas Cards for 2023.

Packs of 10 cards are from just £3.50.

Call Sandy on 605942 for details.

### JIGSAW PUZZLE LIBRARY

Membership is £5 per year and jigsaws can be borrowed for £1 each, with over 400 to choose from. Please contact Sandy on 605942 for more information or to come and choose your jigsaws.

We also have books available for 50p.

All proceeds in aid of The Sussex Snowdrop Trust  
(charity no. 1096622)

## Wading into Winter

By Alice McDougall



In November, when the nights are drawing in and we start hibernating for the winter, Pagham Harbour and Medmerry RSPB reserves are alive with visiting winter birds. If you have not visited the reserves before, now is a great time to go. For beginner birdwatchers, identifying the different birds in the monochrome tones of winter can be confusing. Here's a few to look out for:

### Waders

This is an overarching term for a number of species which share many characteristics. Curlews, turnstones, redshanks, snipes, godwits and plovers (among others) are all 'waders' which, as the name suggests, can often be found wading in shallow waters. At Pagham Harbour, look out for the black-tailed godwit. With their fabulous long legs, straight beaks and soft grey winter plumage, these elegant winter visitors are likely to be migrants from Iceland.

### Divers

You might initially identify divers by their unusual feather structure which gives them a more primitive look compared to other seabirds. They have long slender bodies with legs situated at the back rather than the middle. This gives them many superpowers, for example, they are exceptionally graceful and fast swimmers and can dive down to depths of 10 metres.

The red-throated is the smallest and most common in British waters – the red throat only being visible in the breeding season, and so more easily identified by their white faces and soft grey cap and neck. The great northern diver looks very different; it is a much larger and stockier bird, slightly smaller than a cormorant, with a shorter neck and a steep forehead compared to the red-throated diver.

### Grebes

Grebes also have feet situated towards the back of their body allowing them to be adept and graceful swimmers. In the UK, Slavonian Grebes breed on just a few lochs in Scotland, but the sea around the Selsey peninsula and Chichester Harbour has become an important wintering site for these little birds; again they prefer to stay in the waters offshore. In their fine breeding plumage, they display stunning, exotic colours of golden yellow and rich rusty reds; in the winter, they are still beautiful but a monochrome black and white.

Join us on one of our guided walks this November to find and identify some of our wonderful winter visitors. Find out more by visiting our website <https://events.rspb.org.uk/paghamharbour> or calling 01243 641508.



The black-tailed godwits you see at RSPB Pagham Harbour and Medmerry have come all the way from Iceland and are among the many visitors that spend the winter months here, drawn by the plentiful supplies of food as well as shelter on the reserves. [Credit: Ben Andrew (rspb-images.com)]



### RNLI SELSEY LIFEBOAT SHOP

The RNLI Shop is open  
Tuesday – Sunday  
10:30-16:00

Come and have a browse through our shop where you will find lots of lovely gifts, including Food, Clothing, Souvenirs, Toys and a wide range of Christmas Cards, Calendars and Diaries.

We would love to see you.

For up to date information please check:-

Face Book- RNLI Selsey Lifeboat station

Website- [www.selseylifeboats.co.uk](http://www.selseylifeboats.co.uk)





# Dementia care, led by experts

At Chichester Grange care home in Chichester, we are committed to delivering high-quality, person-centred dementia care. Guided by the latest academic evidence, our dementia specialists support each resident to live life to the full.

## Purpose-built facilities

Chichester Grange care home has been purpose-built, with both luxury and comfort in mind. Everything from colour schemes, signage, and furniture to the design of our crockery, has been carefully chosen to support residents living with dementia live as independently as possible.

Each floor at Chichester Grange is divided into smaller suites that create a calm atmosphere, keeping hustle and bustle to a minimum.

## Care you can trust

We work with academic partners and respected leaders in the field, to ensure we stay up to date with the latest approaches to care. The Association

of Dementia Studies at The University of Worcester helps us to create a bespoke training programme, whilst Dr Nori Graham - a renowned dementia expert and Vice President of The Alzheimer's Society - assists in developing a holistic and forward-thinking approach to the delivery of dementia care.

Suzanne Mumford - Head of Nursing, Care and Dementia at Care UK - closely supports colleagues at every level to implement and review care practices that help us deliver the very best of care for people living with dementia.

## Living well with dementia

Our dedicated team work with you and your loved one to deliver a care and

lifestyle plan entirely tailored to their unique needs and preferences. Our busy activities schedule is always packed with meaningful activities that support your loved one to lead a fulfilling lifestyle.

At Care UK, we've been delivering high-quality, person-centred care for over 40 years. That's why over 8,000 families trust us to care for their older loved ones.

To find out more about Chichester Grange, call **01243 684863**.

**Chichester Grange care home**  
**Grosvenor Road,**  
**Stockbridge,**  
**Donnington,**  
**Chichester PO19 8FP**  
**careuk.com/chichester-grange**

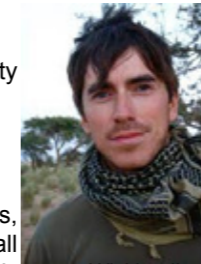
## The Write Zone with Tara Lennon



They say you can't teach an old dog new tricks, and up to now I've had few reasons to disagree. The potential for any old dog to learn something new is loaded with optimism, and I'm an optimistic kinda gal. My glass will always be half-full, and eggs are sunny-side up. Keen to show up in my own life as an old dog capable of new tricks, I'm always on the look out for something new.

So far, 2023 has been a year of adventure for me. I've been camping more, travelled further, been to balls, events and met new, interesting people. The key is saying 'yes' to these things when they come along. They say you shouldn't wish your life away, but I seem to be forever looking at the horizon, even if that horizon is the weekend and another chance to break out and explore.

I was at Portsmouth Guildhall a few weeks ago to watch Simon Reeve's theatre tour. Simon Reeve is an extraordinary man who came from shaky beginnings, but has used his exhaustive curiosity and passion to bring his experiences in the natural world and far-flung communities to our TVs and bookshelves. He held the audience, me included, enthralled for the evening as he wove his stories about people, deserts, ice flows, jungles and mountains. He had a message for all of us: we've only got one life – get out there and live it. Spend your tourist money on areas that need it so they're encouraged to conserve rather than destroy their environment, and make the most of everything the natural world has to offer, even if that's your local park. In short, turn off the TV, put your phone down and get out there and do something cool.



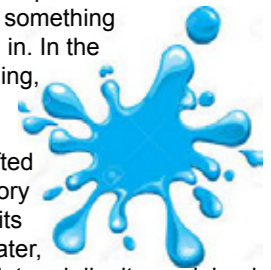
Wikipedia

Fired up, and having just returned from a soul-regenerating week of hiking, kayaking and snorkelling in Lanzarote, I gave in to impulse and booked myself on a kayaking adventure in Chichester Harbour. I confess, I'm not tolerant of guidance unless there's an anticipation that my life might be in danger. I'm more of a plunge-right-in-and-learn-as-you-go, person. For once, I actually followed instructions. I laid out my kit: clothes for getting wet; clothes for warming up; water; towel.



The weather was perfect – the bluest sky you'd want to behold. As we launched from Itchenor hard, I felt like Mother Nature had iced my cake. After our little group had spent a few minutes practising our strokes and getting used to the see-saw effect of over-balancing, we set off behind our tour leader like ducklings after their mum. Our destination: The Crown at Dell Quay, one of my favourite pubs, home of one of my favourite burgers. I'm not ashamed to admit it – good food will always be an incentive.

As I settled into an even rhythm and started to master the skittishness of my craft I began to connect with the real sense of joy I have when I engage with nature, especially open water. Even something so simple as seeing a cormorant basking on a post suddenly seemed transformed into something miraculous. Our little party navigated its way up the channel, crossing the busy lane of water craft heading to Chichester marina. Relatively small craft look enormous when you're seated so close to the water. Our little group shared happy banter. I fantasised winning the premium bonds and kayaking the rest of my life away. And then something unexpected happened: one of our party fell in. In the manner of an explosion, no one saw it coming, least of all him. One moment he was paddling; the next he was splashing and clinging to his overturned kayak. We all drifted nearby, watching the rescue. It was a salutary reminder that a benign activity can turn on its head in a matter of seconds. Ten minutes later, one soggy kayaker – minus his phone, wallet and dignity – rejoined the party.



I have always believed that if you aspire to nothing more in life, at least try to be a good human. Between us and our tour leader we clothed, fed and watered our wet team-mate when we got to the pub. I have to say, that burger was worth waiting for, as was the wine.

The paddle back to Itchenor was assisted by the tide. We joined the slipstream mid-channel and let the flow take the strain. In fact, the tide took up the strain so ably that we shot back to our landing spot at Itchenor hard in seemingly no time at all. As we all bounced ashore everyone, including the chap who took a plunge, seemed to have been infected with a sense of jolly bonhomie. There was a chorus of cheery goodbyes. As I drove home I felt heady, fulfilled, knowing I'd spent time living, not just plodding. I felt my thirst for adventure assuaged but far from extinguished. To echo the wise words of Simon Reeve, the natural world, so crucial for our mental health is right on our doorstep and we only have one life. We have to spend it wisely.

Tara

[tara.lennon@outlook.com](mailto:tara.lennon@outlook.com)

**SAVE THE DATE!**

**GAINSBOROUGH SINGERS' CHRISTMAS CONCERT**

**TUESDAY, 19TH DECEMBER 2023 AT 2.00 PM**

**ST PETER'S CHURCH HALL, SELSEY**

Come and join us for a sing-along of all your Christmas favourites, a cuppa and - of course – cake!

Admission £3, payable on the door

There will also be a raffle

Please come - EVERY PENNY GOES TO SELSEY COMMUNITY FIRST RESPONDERS

**Selsey Cancer Relief Fund**

In October we took over to the Fernhurst Centre, Chichester, 10 off heat pads.

This donation is the start of other projects being discussed.

When these other projects are formalised, we will let you know.

Our monthly jumble sales are continuing, see advert in this magazine.

9) Who wrote the novel Airport?  
 10) Who is the Shire home to?



**SELSEY FIRST RESPONDERS**



**CHRISTMAS MARKET**  
COME AND BUY YOUR CHRISTMAS PRESENTS

**SATURDAY 4<sup>TH</sup> NOVEMBER 2023**  
10AM TO 1PM  
**SELSEY TOWN HALL**

**GIFTS AND CRAFTS, TOMBOLA, RAFFLE**  
**TEA AND CAKE**

**FREE ENTRY**




**1<sup>st</sup> Selsey Scout Group**  
**Christmas Fayre**  
11<sup>th</sup> November 2023  
10.00 am – 2 pm

**Free Entry** *Everyone Welcome*



Gifts  
Cards  
Tombola's  
Decorations  
Jewellery  
Toys & Books  
Bric & Brac  
Refreshments Available

1<sup>st</sup> Selsey Scout Hut,  
School Lane, Selsey.



**St. Peter's Church**  
**Forthcoming Events**

Make a note in your diary:

**PRE XMAS BAZAAR - SATURDAY 25th NOVEMBER**  
To be held in the Church Hall 11.30 - 2 pm  
Bacon sarnies / lunch available as usual from 12 noon.

For the Community, by the community

**CHRISTMAS FUN**

THE STORY SO FAR.....  
The parade will start at 2 pm from East Beach.  
Join us and win £50 for the best, fun xmas fancy dress

On the High street you will find  
FUN KIDDIES RIDES AND ACTIVITIES  
A BUCKING REINDEER!  
A BALLOONIST. GLITTER TATTOOS  
A GROTTTO. FATHER CHRISTMAS  
MULLED WINE AND MINCE PIES  
CHESTNUTS AND TOASTED MARSHMALLOWS  
LIVE PETTING ANIMALS  
A NATIVITY  
ACTORS, MUSIC, STALLS, VENDORS, CAROLS AND FUN.

Put your loved ones name on our memory tree by the live nativity.  
**STARTS AT 2pm**  
**2nd DEC** HIGH STREET, SELSEY  
For info. Tel Lyn 07969905402



**Christmas Market**

St. Peter's Church Hall  
Saturday 18<sup>th</sup> November 2023  
09:30 – 12:30

RNLI Christmas Cards, Calendars, Diaries & Gifts

Craft Stall, Jewellery, Tombola, Raffle  
Unused Christmas Gifts,  
Pre-loved Christmas Decorations  
& much more



The RNLI is the charity that saves lives at sea  
Registered with the Fundraising Regulator

**The Cat & Rabbit Rescue Centre**  
**Christmas Fayre**

Saturday 25th November  
10am-1pm




Raffle Games New & Preloved Goods  
Refreshments Crafts Toys & so much more

£1 entry (under 16's free)



North Mundham Village Hall  
School Lane, PO20 1LA



Grittenham Barn  
**Christmas Market**  
Friday 24th & Saturday 25th  
November 2023  
10am - 4pm

Enjoy hot drinks and food with breathtaking views of the South Downs - explore a fantastic array of gifts and homewares in a festive traditional Sussex barn and rustic outbuildings

In aid of The Sussex Snowdrop Trust £2.50 entrance fee, children free

**THE SUSSEX SNOWDROP TRUST**  
Nursing care at home for local children with life threatening or terminal illnesses

SIGNPOSTED JUST OFF THE A272 PETWORTH TO MIDHURST ROAD GU28 0PG  
IMPROVED CAR PARKING AREAS BUT WEAR WELLIES IF WET!  
WWW.GRITTENHAMBARN.COM




"It's so nice to finally meet you!  
Your dog and I have despised each other for years."



**Saturday 2<sup>nd</sup> December**  
9am – 1pm

Selsey Town Hall, High Street, Selsey

*Tombola, Christmas Crafts & Decorations, Present Ideas, etc*



Cakes, Mince Pies, Teas & Coffees on sale

**Selsey Community Forum**  
Registered Charity 1156460  
Telephone: 01243 201616  
Email: mail@selseycommunityforum.uk  
Website: www.selseycommunityforum.uk  
Address: Selsey Care Shop, 121 High Street, Selsey, PO20 0QB




**Selsey Wine Interest Group (SWIG)**

As we move back indoors, the theme of our September meeting/tasting, as suggested by one of our members, was "Autumn Wines", but - reflecting a period of weather which has included a heatwave and a near freeze, it might be difficult to agree exactly what is an 'Autumn Wine'. Maybe, as in most such cases it all comes down to personal choice and taste.

We started off, unusually for SWIG, with an English wine from the Three Mills Winery in Norfolk. Now, I am not yet a great fan of English wine, which I find rather over priced and not yet up to the quality of much of the rest of the world. However, I do believe that over time our English wine will continue to improve, along with our climate, and will hopefully become more price competitive somehow. This particularly crisp and fruity 10% white wine was bursting with delicious gooseberry, melon and apple character, and is ideal for light and easy drinking, - served well chilled of course.

'Three Mills', by the way, is named after the three old tower windmills that were once adjacent to the winery, and encompasses over 50 years of tradition and craftsmanship.

Next up was a 2020 Pinot Gris (11.5%) from S. E. Australia, rejoicing in the name of "The Feather Plucker's Daughter" after a famous song popular in the Antipodes. Described as bright and aromatic with notes of fresh pears and quince on the nose and palate, it pairs well with pasta. In the collection of grapes brought by James Busby in Victoria, Pinot Gris was first introduced in 1832 into Australia where the wines from the grape are labelled both Pinot Gris and Pinot Grigio, depending on the sweetness of wine, with the drier wines being labelled Pinot Grigio.

Apparently you are challenged to drink a bottle amongst friends as the sun goes down, and then try to correctly repeat the tongue twister on the label!

Pinot Gris, or Pinot Grigio is a white wine grape variety of the species *Vitis vinifera*, thought to be a mutant clone of the Pinot Noir variety. It normally has a grayish blue fruit, accounting for its name, but the grapes can have a brownish pink to black and even white appearance. The word pinot could have been given to it because the grapes grow in small pine cone-shaped clusters. The wines produced from this grape also vary in colour from a deep golden yellow to copper and even a light shade of pink.

Pinot Gris is grown around the globe, and exhibits the flavours of ripe tropical fruit notes of melon and mango from the Pinot Grigio grapes. it is known as Ruländer, or more commonly, Grauburgunder in Germany.

Pinot Gris had been known since the Middle Ages in the Burgundy region, where it was called 'Fromenteau'. It spread from Burgundy, along with Pinot Noir, arriving in Switzerland by 1300. The grape was reportedly a favourite of Emperor Charles IV, who had cuttings exported to Hungary to be grown there by Cistercian monks. Poor yields and unreliable crops in Burgundy and Champagne caused the grape to fall out of favour in those areas. The same fate nearly occurred in Germany, but vine breeders in the early 20th century were able to develop clone varieties that would produce a more consistent and reliable crop. Around 2005, Pinot Gris and very similar New World varietal wines started to enjoy increasing popularity.

Our white wine No. 3 was a Reserve 'Pivotal' 2021 Chardonnay (13.5%) from South Africa, blended from green-skinned 'Elgin' Chardonnay grapes planted in various local vineyards in 2014. The Chardonnay grape itself is neutral, with many of the flavours commonly associated with the wine being derived from such influences as the terroir and oak. It is vinified in many different styles, from the lean, crispy mineral wines of Chablis in France, to New World wines with oak and tropical fruit flavours. In cool climates (such as Chablis), Chardonnay wine tends to be medium to light bodied with noticeable acidity and flavours of green plum, apple, and pear. In warmer locations (such as the Adelaide Hills and the Mornington Peninsula in Australia, and in the Marlborough region of New Zealand), the flavours become more citrus, peach, and melon, while in very warm locations (such as Central California), more fig and tropical fruit notes such as banana and mango come out.

Chardonnay grapes are of course important components of many sparkling wines around the world, including Champagne and Franciacorta in Italy. Chardonnay's popularity peaked in the late 1980s, then gave way to a backlash among those wine connoisseurs who saw the grape as a leading negative component of the globalization of wine. Nonetheless, it is one of the most widely planted grape varieties, with 210,000 hectares (520,000 acres) world-wide.

Moving on to the red wines, we enjoyed a 'Prestige' 2021 Cotes du Rhone Villages (14%) from la Maison Calvet, which has been established for over 200 years in the Rhone Valley. With its beautiful deep ruby colour this wine is a perfect accompaniment to roasted meats and mature cheeses.

Staying in France, we followed up with a 2019 Saint Emilion (14%) from Bordeaux. This delicious red wine's good aromatic structure with smooth tannins reveals a complex rich character of red and black fruits producing roasted vanilla flavours.

Saving, as usual, I believe, the best till last brought us to the enchanting 2020 Monastrell "La Orphica" (14.5%). To produce its majestic aromas and warm flavours of ripe plums, black cherries, roasted coffee and dark chocolate, swirled with a touch of vanilla, each cluster of ripe fruit was carefully selected and collected in the late October of this Vintage year. Unsurprisingly this was voted by the SWIG members present as our Wine of the Month.

*A Pinot Gris Vendange Tardive from Alsace, a sweet late harvest wine.*



*Gouais blanc, one of the parent varieties of Chardonnay*



*Chardonnay grapes after harvest.*



**Selsey Royal British Legion Fishing Club**

New Members Welcome.



For details ring Brendon 01243 601009

11) Which painting by Edouard Manet caused a scandal in 1863?

- 12) To The Lighthouse is a novel by which English writer?
- 13) Which children's author was born in Chipping Sodbury in 1965?
- 14) Who is the central character in Michael Dobbs' House of Cards?
- 15) Who created the detective C Auguste Dupin?
- 16) The Man Within was whose first novel?
- 17) Name the Roald Dahl story, James and the Giant .....
- 18) What was Richard Burton's last film?
- 19) How is the German Ardennes offensive of 1944 better known?



**St Wilfrid's Hospice**  
Making a difference to local lives

**Christmas Tree Recycling Scheme**

Is your Christmas Tree up yet? As we move closer to Christmas and you begin to put up your real Christmas Trees, we want to make sure you don't have to worry about the hassle of getting rid of it afterwards.



St Wilfrid's Hospice is offering it's Christmas Tree Recycling Scheme once again this new year to help you get rid of your real tree without making a mess. All you need to do is put it on your front lawn and then sit back as we take it away for you to be recycled.

Book your collection now for a suggested donation of £15 to support the hospice and save yourself from being covered in pine needles:

[www.stwh.co.uk/christmastrees](http://www.stwh.co.uk/christmastrees)

**Moonlight Walk**

Enjoy a walk under the moonlight to support local hospice care.



On Saturday 15<sup>th</sup> June 2024, you can join hundreds of walkers at our event village, enjoying some great local food, entertainment and merchandise before setting off at 8pm for a 5 or 10 mile walk around Chichester.

This in-memory walk is a great way to raise money for St Wilfrid's Hospice while also enjoying a night-time stroll through Chichester, with some areas decorated specially for the Moonlight Walk.

Get your tickets now:

[www.stwh.co.uk/moonlight](http://www.stwh.co.uk/moonlight)

**Winter Raffle**

You could have a chance to make this Christmas extra special!

St Wilfrid's Winter Raffle is now live, offering you the chance to win amazing cash prizes including a top prize of £2,000 for as little as £1! For every ticket bought, you are helping to make a difference to local lives in the community.



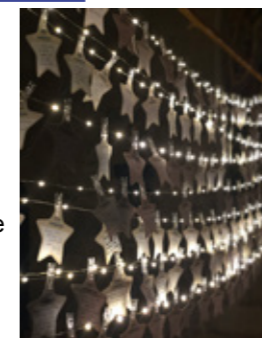
The raffle closes on the 24<sup>th</sup> November, so don't miss your chance to win.

Get your ticket now here: [www.stwh.co.uk/raffle](http://www.stwh.co.uk/raffle)

**Light Up A Life**

You are invited to a service of remembrance and celebration of life.

This December 10<sup>th</sup>, join St Wilfrid's at Chichester Cathedral from 6pm, where you can join many others celebrating life with readings, music and lighting a candle together, in-memory of a loved one.



This is a much-loved event and we have limited capacity, so please book early to avoid disappointment.

<https://stwh.co.uk/events/light-up-a-life-2023/>

**Christmas Appeal**

"Not only do St Wilfrid's incredible staff give patients and their families personalised care and support, but they know how important it is to help families secure and capture those important moments and memories." - Jacqui

This Christmas, Jacqui has shared her husband, Malcolm's story and how St Wilfrid's helped to support him and his loved ones. If you would like to read the full story and help us to continue to support families like Malcolm's then you can do so here:

[www.stwh.co.uk/christmas-appeal](http://www.stwh.co.uk/christmas-appeal)



Different venues are opening their doors, providing a Warm Welcome to people for a few hours in their Warm Spaces from 13<sup>th</sup> November through to the end of March.

**Sundays 3pm - 4.30pm**  
at the church venue hosting ResBite Tea that week

**Mondays 10am - 1pm**  
at The SHOP, 89 High Street

**Tuesdays 1pm - 5pm**  
at Beacon Church, Marisfield Place  
(Community Food Hub & High Speed Full Fibre Internet access for Homework)

**Tuesdays 7pm - 9pm**  
at St Wilfrids Church, 12 Church Road  
(Wilfrids Winter Warmers)

**Wednesdays 10am - 1pm**  
at The SHOP, 89 High Street

**Wednesdays 10am - 11.30am**  
at Selsey Methodist Church, 50 High Street  
(Friendship Group)

**Thursdays 10am - 3.30pm**  
at Selsey Methodist Church, 50 High Street  
(Together Time)

**Fridays 9am - 12noon**  
at Selsey Methodist Church, 50 High Street  
(Foodbank)

**Saturdays 10am - 1pm**  
at The SHOP, 89 High Street

If you are struggling in any way as the darker evenings draw in, and the colder weather arrives, please don't struggle alone..... please just contact Selsey Community Forum and we will do our best to support or direct you to help.

We are grateful for the generosity of the hosting venues as well as funding supporters



121 High Street, Selsey, West Sussex PO20 0QB  
t: 01243 201616 w: [www.selseycommunityforum.uk](http://www.selseycommunityforum.uk)



Have you ever thought about Volunteering?

Do you have a couple of hours on a weekend that you could give to the RNLI in our gift shop?

We would love to welcome you to our team.

If you are interested, please drop your details into the shop and our Manager will get in touch.

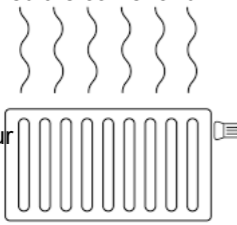


The RNLI is the charity that saves lives at sea



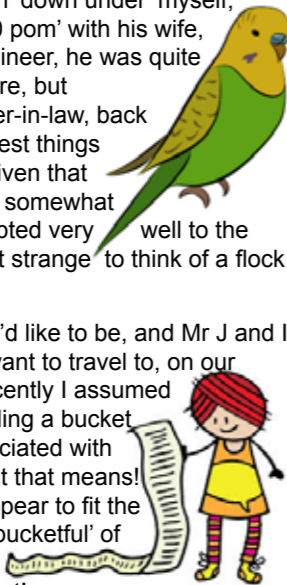
DONNA'S DELIBERATIONS

Well, that's it, isn't it - we've well and truly turned the corner and central heating, electric blankets and 15 tog duvets await - together with the associated bills! It's disappointing, but there we go - unless we up sticks and spend the next few months in Australia, we will have to accept our lot until April!



Interestingly, and depending upon your perspective, perhaps good news: Australia's winter has been the warmest since 1910, with temperatures averaging a good 1.5 degrees centigrade higher than usual. However, according to their Bureau of Meteorology, this is because of global warming and just generally sunnier days, caused by high pressure systems. The Aussie scientists are broadly of the view that the current trends are down to climate change overall, but as a rule, Australia's winters are reasonably mild with less of a difference between the summer and winter temperatures. I've never been 'down under' myself, but my brother went over there as a '£10 pom' with his wife, many years ago. As an aeronautical engineer, he was quite in demand, and built a good life over there, but homesickness brought him, and my sister-in-law, back to Blighty. He said that one of the strangest things was seeing budgerigars flying around, given that we just keep them as pets. Despite their somewhat fragile appearance, they've actually adapted very well to the harsh, desert climate, but I do find it a bit strange to think of a flock of budgies flying around!

Truth to tell, I'm not as well travelled as I'd like to be, and Mr J and I have an ever growing list of places we want to travel to, on our 'bucket list'. I must concede that until recently I assumed the term 'bucket list' was derived from filling a bucket with ideas, but apparently it's more associated with 'kicking the bucket' and we all know what that means! To be fair - both interpretations would appear to fit the bill, really. We have an ever increasing 'bucketful' of goals and experiences we want to achieve, so it'll make for a busy retirement!



I think we are all much more travelled than we used to be - my dad never left the UK, apart from one short trip to France (not sure why) and I don't think he had any real desire to. Our planet has 'opened up' with the expansion of the media, and we can immerse ourselves, virtually, into most cultures, from the comfort of our living rooms. I've become a bit of a You Tube addict and I follow a small group of 'content creators' (that's what they're called!) who have their own 'channel' who just 'broadcast' to anyone who clicks on their channel. One of the best ones is a chap who lives in New York. He just takes his phone, wanders around the city and documents people living their day to day lives. I must admit to being fascinated at the supermarkets and the vast array of food they seem to sell - just how many different types of cereal and pasta do you need? It's also quite upsetting to see how inexpensive the fuel stations are, in comparison with ours! The roads, by the way, look absolutely dreadful, definitely no better than ours in terms of potholes! It's interesting, though, and you get to see an unsanitised version of people's real lives and environment. What did come across is that New York is a vibrant and diverse area, a very fast paced city, but like London, has it's fair share of poverty and deprivation.



You Tube is a brilliant platform, allowing individuals and organisations to share videos, creativity, and ideas to a literally worldwide audience - it was unthinkable in my dad's lifetime, but I suspect that, had it been available, he would have been glued to it, fascinated to be able to glimpse into cultures so different from ours.

Over the past month, I've had cause to pop to Southampton University with my daughter on a couple of occasions; wandering around the campus looking at the facilities has been an eye opener for me. I left university in 1982, and to see how my subject

(psychology) has progressed in that time, is truly astounding. I went to Sussex which was quite 'trendy' back in the day, still is, to some extent because it's in Brighton, although Brighton isn't anything like as 'trendy' as it was in my formative years! Despite what my children may think - I could be quite 'cool!' Of course, the number of universities has grown significantly, and the Polytechnics have been reclassified as Universities - even though they always were, really - they just concentrated on more practical subjects - one might argue, 'useful!' Interestingly, and somewhat unexpectedly, I noticed that the university library is open 24 hours a day. Predictable, you may say, because we all know the mad hours students keep, but it does demonstrate that in this social media 'online' age, we still need the printed word. It may also, of course, have something to do with the fact that it's probably the only really quiet space in the entire university, but it was clear that a great deal of use was made of the 'real' books, despite the fact that students have access to literally thousands of books and journals online. In some ways, it was quite reassuring. Despite the differences between the students of the 21st century and those who studied in the latter part of the last, a physical book is still valued. Digital resources and e-books are available at the touch of a button, but traditional, printed books continue to be sought, so I mused on why this might be, and came up with a few ideas.....Books can be quite tactile - just 'flipping' through one can be quite enjoyable and comforting, and looking at a computer screen is a bit tough on the eyes after a while - the screens emit a blue light which actually causes eye strain in some people. Mr J has this rather clever coating on his glasses which helps to mitigate this, as he spends his entire day looking at multiple screens! The other positive is that books don't need batteries or 'charging up'. One of the first things I do these days when I'm anywhere new, is look around for a socket or a charging point to make sure that I don't run out of battery; that's also a tick in the box for a pen and paper! The lack of an internet connection is enough to send many of us into meltdown these days, and yet those of us 'of an age' managed perfectly well without the constant connectivity of the 'world wide web!'. It stands to reason, then, that one of the more obvious benefits to the physical book is the lack of a distraction - books won't give you 'notifications' or allow 'internet browsing' so that's probably a help for the student fraternity. Surprisingly, real printed books are still the popular choice for adults and children, so it seems that despite the ease of accessing an online book these days, the majority of us still overwhelmingly prefer the physical type. An American linguist has suggested that students concentrate better when using paper books, because turning pages gives some context. This leads to a better understanding - we mentally map information, and that can improve learning. Perhaps the prevalence of the online book is not so much of a threat after all.....



On matters other, next month will be you know what, of course. I have not done so much as buy a card, wrapping paper or a gift tag. There is, however, a reason for it this year - for the first time ever, I hit the sales just after last Christmas and I have all the essentials, sitting in a box, in the loft. I'm feeling quietly smug. Yes, I know buying after Christmas is what a lot of people do, but I could never bring myself to think about Christmas after December 25th. I forced myself last year, though, when I realised how much a bit of effort could actually save us. Whether I can bring myself to do it again is another matter, though!



Take care all, keep warm, look after yourselves - and each other.

Donna [donnajohnson279@gmail.com](mailto:donnajohnson279@gmail.com)

ARMADA LEGEND 1588

Mighty fine the fighting fleet on home waters advancing  
white sail billowed on occasion  
impressive in unsubtle strength its brazen luck here chancing  
an often lifeless Channel 'came by Spanish timber darkened  
blatant imminent invasion  
for dwellers of this threatened land their dread sight to awaken

Unwieldy their galleons, the Spanish crescent scattered  
it ran in terror, fled in awe  
by blood of hard seafarers was many a bulwark spattered  
dark storm clouds gathered overhead defeat was close at hand  
in all a brief one-sided war  
a broken ship in pieces foundered off the golden strand

Swiftly Drake was handed urgent news on Plymouth Hoe  
the Bowling Green his game of choice  
his match poised at a crucial stage meant he declined to go  
the mariner risked the wrath of Tudor England's hardline Queen  
but he heard not the Royal voice  
she had matters of State in hand, he valued his routine

Alighting on her war-torn deck they picked at CARTAGENA  
lifting, stealing plank by plank  
as crows consuming rotting flesh the scavengers who'd seen her  
loomed large she from smokey seas no business had she there  
t'was pure best fortune them to thank  
as ants they carried off their prize until her ribs were bare

With near two hundred anchors weighed the English War Fleet  
sailed  
lured onward by the jaws of hell  
swift progress its good fortune, keen Southwesterlies prevailed  
engaging then the enemy much cannon fire followed  
on Solent air the gun smoke smell  
those tamed wound-licking chancers in the deepest mire wallowed

That wrecked Armada galleon hides deep within a house  
collected beam by back break beam  
its one-time loudly creaking timbers quiet as a mouse  
hauled by horse from Wittering West undignified her fate  
two miles nearer twelve did seem  
the clue lives on at Somerley - the Farm's name by its gate

Drake the master mariner torment of the enemy  
sharp Devonian tactician  
Drake the fearless Drake the feared Drake the schemer of the sea  
Drake the 'Pirate' of Cadiz Drake the fire ship sender  
gainer of the foe's submission  
Drake the fawning royalist Drake the great pretender

Hot Manhood hearths burned bright through winter 1588  
reflected they on late events  
remains of Shipwright's splintered oak long flickered in the grate  
treasured CARTAGENA timber taken for construction  
what would the coming years present?  
the beach she'd littered that July, unburdened of disruption.

JOHN BYRNE MAY 2023. ARTWORK JASON BETON



Sincere thanks go to Ruth Mariner for her many hours of painstaking research into the ancient story of Spain's lost ship CARTAGENA.

With special thanks to Jim Kennedy for some indisputable first hand evidence regarding the existence of the ship's timbers in situ.

# In the Garden

our monthly guide to gardening - In memory of Giles Peare

## Jobs for November

Take leaf-cuttings of African Violets by using a sharp knife to cut off a healthy, full-sized leaf as close to the stalk base as possible. Trim the leaf stalk to about 1½" (8cm) long, and insert 1" (2.5cm) of it into ordinary potting compost mixed half-and-half with vermiculite to improve drainage.

Don't forget to bring containers of tender perennials under cover before the end of the month. This will save them from any frost and will say you some heartache and money. Place plants under cover in a bright and frost-free position and reduce both the frequency and quantity of water, keeping the compost barely moist. Use the plants to provide material for cuttings in Spring or repot over-wintered plants in fresh compost for next Summer.

Bring in any remaining crops that could be damaged by cold, wet weather ie. Marrows, Squashes and Pumpkins. They should have ripened nicely by now. Their hardened skins will protect the flesh inside, keeping it moist and helping them store well into the coming months. Keep under cover in a cool but frost-free place. Check regularly and remove any showing signs of rot.

## Tip Top Tips

- Use boiling water to sterilise the soil in greenhouse, borders and vegetable plots.
- Don't place any plants or vegetables needing a lot of attention at the back of borders.
- Do not harvest Brussel Sprouts or Parsnips before a frost as the flavour is better.
- Do pruning now of Apples and Pears.
- Plant new Roses and other bare-rooted trees and shrubs.
- Continue to plant Tulip, Narcissi and Daffodil bulbs.
- Protect Holly berries from birds by using netting so that you will have some berries left for Christmas.
- Dig over any empty areas of soil and add compost.
- Clean lawn mowers and drain off any fuel.
- Plant Marigolds in the four corners of the garden to attract Bees.
- Place used coffee filters at the bottom of pots to keep the soil from running out of the drainage holes.
- Look out for hibernating wildlife before lighting bonfires.

## Answers to last month's quiz questions:

1) Damien Hirst's 2) Antony Gormley 3) 2000 4) Banksy  
5) Tracey Emin 6) Charles Saatchi 7) Belgian 8) Mark Wallinger's  
9) Flowers 10) Yorkshire 11) Roy Lichtenstein 12) Gilbert and George 13) 58 14) St Ives 15) Mark Rothko 16) Bilbao  
17) Tashkent 18) Delft 19) Caspar, Balthasar, Melchior  
20) Cricket 21) Bell-Ringing 22) Gregorian 23) Divine Wind  
24) 2ft (0.6m) 25) Spring 26) Great-granddaughter 27) Stendhal  
28) K 29) Abigail 30) Bengali 31) Comedy Store 32) Beau  
33) Doncaster 34) The People's Car 35) Conquest, War, Famine, Death 36) Aaron Copland 37) Betty Ford 38) P H Newby  
39) The All England Lawn Tennis and Croquet Club 40) 27  
41) Stalagmites 42) North Atlantic 43) Malcom McLaren  
44) Spanish Riding School 45) Infallible 46) Knot 47) 1960  
48) Boat 49) John Galsworthy 50) Seahawks 51) Malaysia  
52) Plato 53) Very Superior Old Pale 54) Jackie Milburn  
55) Twiggy 56) Black 57) Mob 58) Benjamin Franklin  
59) France and New Zealand 60) Peter Tchaikovsky  
61) Simon and Garfunkel 62) Rudolf Hess 63) 7920 64) Balsa




## The Hidden Garden

a Selsey Community Garden for all to enjoy. Come and join us and meet other passionate gardeners, learn seasonal gardening ideas, swap seeds & plants and help grow fresh vegetables and flowers to take home.

we meet Tuesday, Thursday & Saturday 10-4pm  
at The Bridge Support Centre  
behind Selsey Library, PO20 9EH  
contact Paul on 07815 790770  
for more information

organised by 



### Selsey Gardening Club

November is our end of year meeting for members only.

We will start again in March 2024.



### Handy Larry Selsey Services

Local, reliable handy-men at your service.

Flooring - Tiling - Doors  
Handles - Insulation - Shelving  
Furniture assembly  
Picture hanging  
Painting

All jobs considered, large and small

Check out our fb page at:  
[Handy-Larry@manlywork](mailto:Handy-Larry@manlywork)  
or call us on 07380 165744

**KINDLY MENTION SELSEY LIFE  
WHEN REPLYING TO AN ADVERT  
IN THIS MAGAZINE**

## A call for help to plant trees as part of our hedge project



The Manhood Wildlife and Heritage Group gained a small grant from Southern Water's Biodiversity Grant to plant hedges across the Manhood Peninsula. We are using this money as a pilot study to focus on one parish, Sidlesham. From this we then hope to apply for larger grants to take the project across the whole of the area.

We now need an army of volunteers to help us to plant the nearly 10,000 trees we have grown in our local tree nurseries, been given free as part of larger nationwide conservation projects and been offered by local residents. We have land to plant these trees on as new hedges and as gaps that need filled.

Planting trees in a hedge line is much easier than it sounds. The trees tend to be 1-year whips that are planted bare rooted so they do not need big holes dug with mountains of earth excavated. In fact, you just need to put a slit in the soil with a spade, wiggle it about a bit and pop the tree into the small gap. This then gets a bamboo cane inserted and someone squishes the ground around the tree with their boot to close up the space. A rabbit guard is wrapped around and the tree is planted! You can plant thousands of trees in a day this way with some volunteers putting the slits into the ground, others following dropping trees and canes into the holes, and then the final wave pushing the soil around the trees and installing the guards. It becomes a very efficient and easy way to plant volume.

The trees need to be planted between November and the end of February and we need your help. We will be putting out emails detailing the planting sites every week and will be doing most Tuesdays and some Saturday mornings. If you sign up as a volunteer via the MWHG website – [www.mwhg.org.uk](http://www.mwhg.org.uk) you will get the emails about our working sessions.



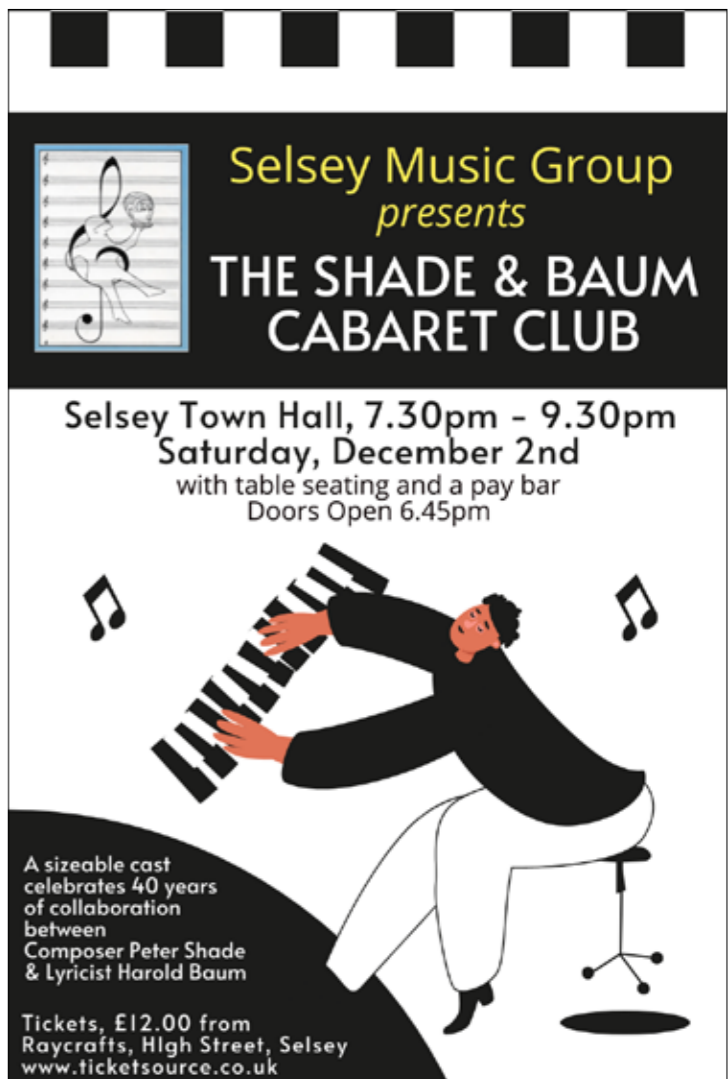
Hedgerows are so important for nature and act as wildlife corridors across the area. They also act to trap particulate pollution in air, hold back soil and silt from ditches and waterways and contribute to our visual landscape. Please help us to put back missing hedgerows and improve those that need some TLC.

Tree planting is a wonderful and positive activity and you can plant a tree in memory of someone, or to mark a birth or significant birthday. You can do as little or as much as you like and can have the role of dropping these small light baby trees into the holes created, it all helps.

Please email me at [jreeve@mwhg.org.uk](mailto:jreeve@mwhg.org.uk) if you have any queries or want to get involved.

Jane Reeve, project officer

20) Which prima ballerina married a Panamanian diplomat in 1955?  
21) What are Norway lobsters called when cooked?  
22) What rope is used for tying up a ship?



## Selsey Music Group presents THE SHADE & BAUM CABARET CLUB

Selsey Town Hall, 7.30pm - 9.30pm  
Saturday, December 2nd  
with table seating and a pay bar  
Doors Open 6.45pm

A sizeable cast celebrates 40 years of collaboration between Composer Peter Shade & Lyricist Harold Baum

Tickets, £12.00 from Raycrafts, High Street, Selsey  
[www.ticketsource.co.uk](http://www.ticketsource.co.uk)

Selsey Music Group's next production is The Shade and Baum Cabaret Club, a jazzy mix of eclectic tunes from love songs to nerdy science. The event celebrates the 40th anniversary of the long-term collaboration between accomplished musician Peter Shade and the songwriting "Singing Biochemist," Professor Harold Baum.

A cast of local singing talent, accompanied by a jazz band, will tour through a witty repertoire that includes comic ditties and sing-along anthems, from the melancholy to the inspirational. Titles include, Freedom!, Ophelia's Love Song, Alone inside my head, This Lovely Earth, and Oxidative Phosphorylation. Last performed to local acclaim in 2012, the show provides an opportunity to celebrate the long careers of Peter and Harold, both now in their 90s.

The unlikely collaboration of Harold, a professor of biochemistry, and Peter, a nationally renowned jazz keyboardist and arranger, began with two albums, Biorhythms I and II. Whereas Harold's first book, The Biochemist's Songbook, set university-level biochemistry to traditional folk songs, Biorhythms covered GCSE (then O-level) biology to original popular music, sung by four teenagers, The Metabolites. Harold and Peter had so much fun that Peter began setting Harold's poetry to music, yielding a broad repertoire of songs on diverse themes. It is these "grown-up" songs that make up the bulk of the cabaret.

Tickets can also be purchased through:

<https://bit.ly/ShadeAndBaum>

23) Radio Direction Finding became better known as what?  
24) In Greek mythology, which trio represented beauty?  
25) Who is the patron saint of Venice?



# November's Update

... Focus on ...

In this month's 'Focus On...' section we say 'hello' to **Karen Pirks** who is our **Operations Lead**.



Karen joined the Charity in 2016 as a volunteer, after contacting our Chairman, bringing the obvious benefits from her involvement at West Sussex County Council in the drive for more dementia friendly communities. Through joint funding, several events have since taken

place enabling Selsey to become not only 'Dementia Friendly' but working towards being a fully inclusive and compassionate town.

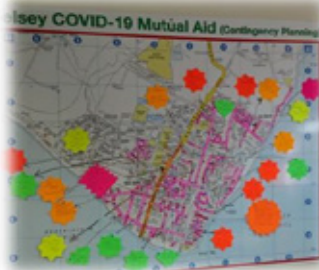
This has included the Forget Me Not Project, Friday Club (music workshop with Belinda Gannon); Valentine's, Christmas and Jubilee Celebrations for people in Care Homes and those living at home with carers.



When the pandemic hit in 2020, Karen and the Selsey Care Shop Manager, Jo set up the **Selsey Covid19 Mutual Aid Group**. A call-to-arms went out and **Selsey Community Forum** were blessed with over 90 people, having been furloughed, signing up as additional volunteers. This enabled the Charity to provide doorstep support, delivering essential shopping, medication, meals and activities. Every Selsey road had a dedicated Buddy!



Following the pandemic, many areas of need emerged and from this Karen initiated the creation of the **Selsey Employment Service** which is now led by Sue Boucher supported by Shelby Pavlou.



Karen has done a valuable stint as one of our Trustees and now, as Operations Lead, and part of the Charity's Leadership Team, Karen

is driven in creating an integrated service, providing the best for those who access any of the **Selsey Community Forum** activities. With 30 years' experience in the social care sector in various management roles, her passion is to equip people with the tools to provide best practice to our most vulnerable. She is responsible for training and peer support of staff and volunteers, risk assessment of activities, and continues to use her wider connections to drive the Charity work forward.

When Karen is not working, she loves spending her free time reading, attending choir, supporting her Church, travelling, and time with her family, friends and two dogs.

Karen is pictured here with Karen Halford and Sarah Palmer, both part of the **Senior Leadership Team**.



**Selsey Community Forum** couldn't operate without the assistance of volunteers. They make helping our amazing community possible.

Whether you have a few hours a week or a couple of days, your skills and experience will enable the charity to function and grow. Need within our community continues to grow and with your support we can continue to meet need locally.

Positions available:

- ✓ Good morning calls to lonely and vulnerable people. (A friendly chat to brighten someone's day/checking on their wellbeing).
- ✓ Transporting and supporting a person to their medical appointment. Ensuring they continue to access health care appointments.
- ✓ Providing cover in the Selsey Care Shop answering the phones and responding to people's enquiries face to face.
- ✓ Digital support for our older generation. Enabling them to be empowered when ordering medication, making appointments, shopping and keeping in touch with loved ones living away.
- ✓ Becoming a Later Life Buddy to support the implementation of the "My Future Care Handbook". Full training is provided to enable buddies to guide people with preparing and planning for their later years.
- ✓ Money Support Debt Advisors- as the cost-of-living bites need has escalated across the Community. Enable a person to take control of their money issues. Specific training will give you all the tools to do this.
- ✓ Participate in supporting our various activities offered by our organisation- use your various skills to provide music, song, craft, and reminiscence.

If you are compassionate, caring, non-judgemental, caring, great listening skills, and keen to make a difference, then we would provide you with training and peer support, and a friendly working environment - enable and empower - be part of the solution, responding to need, locally! Why not become a volunteer for Selsey Community Forum? For more information please contact us at the **Selsey Care Shop**.

**Selsey Community Forum** .....responding to various needs locally

*If you want to know more of the work of **Selsey Community Forum** in the community or are interested in volunteering, bringing your skills to help develop the groups, or simply donate to our community organisation that we will no doubt all benefit from in the future, if not now, then please contact us at The Care Shop.*

## Selsey Community Forum

Registered Charity 1156460

Telephone: 01243 201616

Email: [mail@selseycommunityforum.uk](mailto:mail@selseycommunityforum.uk)

Website: [www.selseycommunityforum.uk](http://www.selseycommunityforum.uk)

Address: Selsey Care Shop, 121 High Street, Selsey, PO20 0QB

Opening Hours: Mon – Fri: 9am – 4pm Sat: 9am – 1pm Sun: 10am – 1pm

Forum Supporters, please pop in or check the website

[www.selseycommunityforum.uk](http://www.selseycommunityforum.uk)

## The Pollinator Highway

You may have seen recent a recent report showing that England is one of the most nature depleted countries in the world! This is a result of several factors, farming techniques, changes in land use, more houses for example. One of the key aspects of trying to increase the biodiversity of where we live is the issue of insects which pollinate the flowers. In order for all the big animals that we like to see to have suitable habitat and food we need to nurture the little animals at the bottom of the food chain, and at the same time these critters also pollinate our flowers and crops.

You may remember the time 20 years ago when if you drove down the motorway in the summer, on arrival at your destination you had to clean your windscreen of all the insects caught on it. That doesn't happen any more! Insects are on the decline, and this is partly because we have 'tidied up' all the areas of wildflowers and grasses which provide their food.

What are we doing about this in Selsey? Well there is a group of people who are part of the Manhood Wildlife and Heritage Group, along with Paul from the Hidden Garden, who are working with West Sussex County Council to manage some of the verges in Selsey so that wildflowers can flourish and provide habitat for insects. We started in 21/22, West Sussex did one cut in the spring, then the verges were left to grow over the summer. In some cases we also seeded some of the bare areas with wildflower seeds, and used a plant called Yellow Rattle to suppress the grass and give the flowers a chance!

This year, 22/23 we also incorporated a verge in West Street into the project. The verge had been used to store equipment for pipe laying so was bare earth and we seeded it in the spring, we had a wonderful display of flowers in June and July.



In the Autumn we cut the grass with a scythe West Street Verge mower and remove the cuttings for composting. We wait until any seeds have dropped to the ground to make sure there will be

flowers next year! We are always looking for volunteers to help rake up the grass and load it up for taking to be composted. Last Year and this we have had volunteers from Target financial services and we would like to say thank you, but all are welcome!



What can individual gardeners do to increase pollinators? Well the answer is 'don't be too tidy'. You may not want to 'rewild' your whole garden and not mow your lawn or tidy up the corners at all. But if you can start by doing 'No Mow May' and then leave one or two square meters of your lawn uncut over the summer you will be surprised what grows! At the same time leave a small patch in a corner to grow what ever comes up, nettles, brambles, all the gardener's enemies are also friends of wildlife!



Sunnymead Drive Verge

All insects can pollinate plants, not just bees, so butterflies, moths, wasps and even flies are all valuable to the plants, In general if we leave them alone they will ignore us!!

If you would like to help us with the verges, or get more information please look on the MWHG web site where you will find more details!



Cutting the verges

One day we hope to have enough 'wildflower' verges, and wild spots in gardens to allow the pollinating insects to travel all around the town with ease, and may be even as far as Chichester!

Oh and while you are in the garden, have a look and see if you have a spot where you can make a small hole in the bottom of your fence for a Hedgehog Highway, but more about that next time!!

## Friends of Selsey Medical Centre (FSMC) Charity No: 1013645



### LOOKING TOWARDS THE YEAR AHEAD

We are really grateful to our supporters who have renewed their subscriptions for the current year. It is much easier to spend our funds than to raise further amounts and we need to monitor the projects we are able to support month by month.

This month the Friends have agreed to cover the costs of Building Alterations to the surgery to accommodate two new staff and make better use of space for existing staff. This involves creation of a stock room, changing an office into a clinical room and the conversion of a small room into an office. It is hoped this work can all be completed by Christmas.

We have agreed to continue to support the Buddy Scheme which is assisting patients with transport to the surgery and surrounding hospitals for consultations and treatment. To enquire about using this service please contact the Care Shop in Selsey High Street (next to Raycrafts), telephone 01243 201616.

Furthermore we are committed to contributing for another year towards the Community Advisor who is available every Thursday at the Surgery and otherwise at the Care Shop. She will assist any local individual with non-medical issues, such as form-filling, debt, employment and general advice. This service ensures that as many local people as possible receive free, professional assistance with their personal administration and problem-solving.

If you would like to support the Friends for as little as £5 per year, you will find membership forms at the surgery. Otherwise phone 01243 607869 and talk to our Membership Secretary, who will welcome your call! Last of all, perhaps you might consider including us in your will.

TLH 11/23



**Ladies Section**

The sunny hot weather of the last two weeks of August continued into September. The golf course looked amazing, one bonus of the rain that fell during the first two and a half weeks in August. Fairways were still green and the blackberries, were plentiful and the hedgerows and the wild life flourished. Golf was played, and evenings were spent relaxing with a drink and enjoying the views of the 1st and 18th holes, leading the eye to the south downs in the distance.



The 9 hole competition, played along side the main competition, was won by Caroline Newton and Jillie Ranscombe came second.

On Friday 8th one of the Ladies most prestigious competitions was played, the President's Prize. Mr. Peter Senft is this year's President and together with Jacqui Towns, Lady Captain, organised a superb competition followed by tea. There were prizes for nearest the hole on the par 3 short holes and a nearest the line on the first hole. The refreshments that followed were most welcome. It was a very hot day. Following the tea the President presented the prizes for the first and second winners and the winners of the nearest the pins and nearest the line. Sam Dowsett was the winner of this years President's Prize with 41 points and Carol Smith came second with 39 points. Everyone enjoyed the day and Jacqui Towns. thanked the President for providing such a lovely day.

The Ladies played in three mixed competitions during September. Every year the Golf Club play the Country Club and this year it was played on Saturday September 23rd. The ladies section were asked to enter 2 teams of four ladies. 1 team to represent the country club and the other to represent the golf club. Sam Dowset and Kirsten Shepherd (golf) beat Kathy Croxford and Caroline Simpson (country club) and Gill Hill and Gill Flack (country club) beat Sheila Watmore and Caroline Newton (golf club) All very close and when the the ladies came in with with one win each every one cheered as this meant that the overall match was a draw 16 1/2 to 16 1/2. Selsey Golf retained the cup as they won the event last year.

The second was the Texas Scramble played on the on 29th The Texas Scramble was played in teams of 4. This is quite a complicated format but, once mastered, is a lot of fun. The winning team was Michael Bryer, David Flack, Caroline Simpson and Jackie Mayzes with a grand total of 65 points.

The third mixed competition, the Clive Cockayne Memorial Trophy was played on the 30th and was very well supported. 24 pairs played. As mentioned before in the Selsey Golf articles, Clive was a local Estate Agent and former President of the Club who sadly passed away two years ago. Clive had worked tirelessly for the Golf Club and had been a member since joining as a young man. Clive had actually been President twice in his time at the Club and also Club Captain twice. The winning pair of this years Trophy was Barry Davis and Paul Carver and the runner-ups were Jason and Patrick Arnould.

The Daily Mail Foursomes was played on 4th September. The winners of this competition qualify to play in the Ladies Daily Mail Foursomes and will go on to play in the national competition in 2024. The winners were Alison Weller and Carol Smith who scored a net 68. Trudy Hynes and Jacqui Towns came second with a net 71.

together with Jacqui Towns, Lady Captain, organised a superb competition followed by tea. There were prizes for nearest the hole on the par 3 short holes and a nearest the line on the first hole. The refreshments that followed were most welcome. It was a very hot day. Following the tea the President presented the prizes for the first and second winners and the winners of the nearest the pins and nearest the line. Sam Dowsett was the winner of this years President's Prize with 41 points and Carol Smith came second with 39 points. Everyone enjoyed the day and Jacqui Towns. thanked the President for providing such a lovely day.

The Pam Albers Tropy was played on 11th. Pam Albers was a former member and secretary of the ladies section. When she passed away, many years ago, her husband presented the trophy to the ladies section and requested that a Stableford competition be played annually in her memory. This has been done and this year's winner was Carol Smith with 39 points and the runner-up was Jacqui Towns with 37 points.

The 9 hole competition on that day was won by Caroline Newton with a 17 points and Carole Redman was second with 16. A very close result.

On the 25th of September the Autumn Give and Take was played. This is the competition where each participant provides a prize.

The prizes are wrapped so nobody knows what the prizes are. This competition is a Stableford, and the winner was Sam Dowsett with an incredible 47 points. Sam only joined the club in April this year, having not played very much golf in her life before. Kathy Croxford was second with another very good score of 36 points.



Sam and Kathy

**"SWIMMERS FOR UKRAINE "**  
**13<sup>th</sup>-16<sup>th</sup> November**

A group of swimmers, mainly from Selsey, are holding a Swimathon in aid of sending small gas stoves to Ukrainian families who have no means of cooking or heating due to the lack of electricity.



Each cooker with gas costs £25 through a wonderful organisation called "New Forest For Ukraine", based in Lymington, Hants, (They have sent many, many lorry loads of aid to Ukraine).

The swimmers' target is to provide funds for 100 such stoves.

Please call Julian Clark on 07721 532711 or email [julian.lindseyclark@gmail.com](mailto:julian.lindseyclark@gmail.com) if you would like a sponsorship form to obtain some of your own sponsors and join the "Swimmers For Ukraine", or sponsor Julian who is aiming to break his personal swimming record for this really important event by swimming 132 lengths at the Oasis Pool, Selsey, that's 2+ miles. (Equivalent to running a marathon, perhaps).

You may also meet some of our other "Swimmers For Ukraine" around Selsey, looking for sponsors.

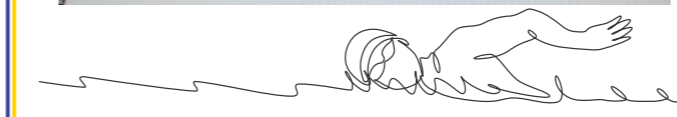
Every penny raised will go towards our target.

The dates for swimming are 13<sup>th</sup> to 16<sup>th</sup> November inclusive at Oasis Swimming Pool, Seal Bay Resort, Selsey, the owners of which are generously allowing us a free swim for this event but only between 9am and 1pm.

Alternatively you may swim at any pool of your choice to help raise funds.

"Swimmers For Ukraine" is non political but only wish to help the families in need in a country in conflict.

Thank you everyone.



- 26) Which England football manager did Terry Venables succeed?
- 27) Who plays Madonna's chauffeur in the video of her song "Music"?
- 28) Which US vice-president couldn't spell "potato"?
- 29) On what date is Battle of Britain Day?
- 30) What was Marilyn Monroe's last completed film?
- 31) What is the last book of the Old Testament?
- 32) How many people rule in a triumvirate?
- 33) Which country was known as the "jewel in the crown"?
- 34) What name is given to a yacht with two hulls?

F	E	S	C	U	E	S	T	O	M	A	C	H	V	E	S	P	E	R
U	P	T	O	P	A	R	R	O	A	C	H	S	E	A	K	A	L	E
S	H	I	R	K	S	D	E	M	O	T	I	C	T	R	A	V	E	L
S	E	N	N	E	T	S	A	P	R	O	N	T	E	N	T	A	G	E
E	S	T	E	E	M	T	S	H	I	R	T	S	R	E	I	N	I	N
D	U	S	T	P	A	N	U	S	Z	E	A	R	N	E	S	T		
S	S	N	A	U	R	U	C	M	E	N	G	T						
O	P	I	W	E	T	H	I	C	A	L	C	S	W					
M	A	R	A	N	J	A	B	T	O	N	E	R	R	O	C	O	C	O
N	A	A	N	S	B	A	S	E	M	E	N	T	S	N	A	M	E	R
I	R	I	D	I	C	S	T	R	I	A	T	E	O	C	T	A	D	S
B	O	R	E	D	T	H	E	M	E	S	O	N	G	E	C	L	A	T
U	N	I	S	E	X	F	R	O	S	T	S	A	P	P	H	I	R	E
S	E	R	P	U	N	S	T	E	R	M	T	H	I	S	D			
P	S	O	I	L	T	S	I	R	U	P	S	V						
F	I	S	H	I	N	G	R	A	N	T	H	R	U	W	A	Y		
E	N	C	A	M	P	S	E	L	V	A	G	E	R	E	G	A	L	E
S	H	E	R	P	A	S	P	E	E	N	S	F	A	C	A	D	E	S
T	O	N	E	U	P	Q	U	A	N	T	I	C	S	E	R	I	N	S
A	L	E	R	T	E	D	T	R	U	E	D	C	A	D	E	N	C	E
L	E	S	S	E	R	G	E	N	E	S	E	S	L	E	D	G	E	S

C-R  
 E-V-I-W-O  
 S-O-C-H-C-I-D-E-I-L-O  
 O-M-T-U-L-I-C-E-D-V-I-N-T-I  
 H-R-O-C-E-M-E-D-R-R-L-E-B-L-I-O-S-N-E  
 U-S-C-A-T-L-E-B-N-E-O-R-S-R-A-T-B-K-E-L-E  
 M-V-A-T-I-O-A-R-H-O-R-P-I-W-E-J-M-O-T-O  
 F-E-A-S-N-T-E-T-S-T-C-O-D-E-R-E-O-K-U-S-N  
 S-E-N-T-G-H-O-S-S-O-B-O-R-A-N-G-C-E-P-E-Y  
 E-C-A-T-L-L-O-W-P-O-E-R-M-P-K-I-A-T-A-R-T  
 R-P-B-A-T-A-L-E-E-O-K-P-U-N-S-R-I-C-K  
 O-M-E-F-H-A-N-N-Y-C-S-T-L-E-T-R  
 H-T-I-R-T-U-N-R-A-F-N-L-E-E  
 O-E-N-U-M-N-Y-Y-E-A-I-I-M-S  
 G-E-D-S-S-P-H-A-G-A-N-D-N-L-G-H-W-L  
 T-H-K-I-I-D-T-I-T-C-O-O-A-K-T-O  
 E-R-D-S-E-R-W-H-M-S-N-E

**Last Month's Answers**

ANSWER: Across: 1. PEARL KITE. 8. INVESTIGATE. 9. ENROLL. 10. ISLE. 12. LONG. 13. MIDAIR. 15. COEFFICIENT. 16. ITTY-BITTY. Down: 2. ENVIRONMENT. 3. RESULT. 4. KNIT. 5. TRANSPARENT. 6. FIREPLACE. 7. CELEBRATE. 11. LITCHI. 14. IFFY.



# “Universal Upheaval of Womanhood”

*A commemoration in words and music of the roles played by women in WWI*

**7:30 pm, Friday, 10<sup>th</sup> November**  
**Sidlesham Memorial Hall PO20 7RD**

*This commemoration uses contemporary written accounts to relate the various roles played by women in WWI—doctors, nurses, factory and agricultural workers, as well as wives and mothers.*

Drinks and refreshments available  
Tickets: free from [dancingdevonshire@hotmail.com](mailto:dancingdevonshire@hotmail.com)

## MEN'S BREAKFAST

An Invitation from IMMANUEL CHURCH  
Guest Speaker • Richard Borgonon

Saturday 25 November 2023 8am

Use QR to book online or call Peter on 07813 024585

Only £10

**LLOYD'S**

The Woolpack Inn • 71 Fishbourne Road (West) Fishbourne • Chichester • PO19 3JJ  
Contact Peter Sutton: [peter@ppsutton.co.uk](mailto:peter@ppsutton.co.uk) • [www.immanuelchichester.com](http://www.immanuelchichester.com)





**Green Bowls**

**September 7<sup>th</sup>** A 4 Triples mixed friendly at home to Bedhampton saw Crablands gain a narrow victory (69-66)

**September 13<sup>th</sup>** A touring team supporting Prostate Cancer Research (Dennyside)

played six rinks against a Crablands team, with tea and a raffle after. The whole day was brilliantly supported and **£1300** was raised for the charity. Dennyside winning the day overall 107 to 100

**September 14<sup>th</sup>** The second round of the Ladies v the Gents was held on a beautiful afternoon with everyone enjoying themselves immensely. The final score was a win for the Ladies and evened the season off as the Gents had won earlier in the season. Thank you to the ladies who provided the lovely teas.

**September 17<sup>th</sup>** The internal competition for the Fullers Trophy was to be held on Sunday 17<sup>th</sup> September. All the players assembled and went out onto the green but after about six ends lightning was seen and thunder heard so they were all called off the green. Everyone went up and had a cuppa but unfortunately the heavens opened, the green was soon flooded and the competition had to be called off.



**September 17<sup>th</sup>** Crablands Men collected their WSBL Division 2 trophy at Worthing Pavilion BC



**September 20<sup>th</sup>** Crablands Ladies Red team collected their GSM Division 1 cup at Worthing Pavilion. Due to poor weather their matches had to be played indoors.

**October 4<sup>th</sup>** The Ladies County Dinner was held at Mid Sussex Golf Club Ditchling.

Crablands were well represented with 11 ladies attending. Speeches were made and awards given by the County President and the Bowls England Junior Vice President. Crablands received



cups as winners of Senior Fours (Cheryl Brown, Sarah Fewster, Sheila Jones and Carol Bowles), Winner of the Four Wood Unbadged Singles (Lesley Duff). Crablands were runners up in the County Top Club with a squad was made up from many of the Crablands Ladies.

Semi-finalist in the Two Wood Singles was Debs Hogg, in the Pairs Sue Blyth and Debs Hogg. Congratulations to all who played in any of the County matches.

Well done to all who played in any of the games that contributed to these trophies throughout the season.

**Short Mat**

The season opened at the beginning of September and roll-ups are being enjoyed by many.

**September 24<sup>th</sup>** saw the Opening Day competition being played. This was a round robin set of games with everyone playing in rinks for six ends and then moving on. The winning team was Bryan Jackson, Cheryl Brown, Lil Tuck and Judy Sharpe. After the games we went up for tea and biscuits. The raffle raised **£55**. Thanks to John Hardy for arranging the day.

**October 11<sup>th</sup>** Crablands Avocets played Crablands Cormorants in a beginning of season friendly. Avocets won on both mats in a close fought game, going either way in both games until the last end.

**October 12<sup>th</sup>** Saw the first league match of the season with Crablands



Cormorants playing Nyetimber Bears at home. Crablands won on one league mat and won the match overall gaining 4 points. The friendly also had a good win on their mat.

**Tennis**

Summer Competition matches are now complete with the latest results below. The Winter League for both men and women is up and running and we look forward to a great season.

Many thanks to our team and club members and the time they give for these matches. We now have three teams in different divisions of the TDS Sussex Doubles League - two men's and one ladies.

**September 2023**

The Men's first team have completed all their league matches and finished top of the league. A fantastic finish to the season and congratulations to our first team players and their captain Andy Gilmour.

Andy Gilmour is in 1<sup>st</sup> place, Dan Cobden in 3rd, Michael Ackerman in 4<sup>th</sup> and Carl Spencer in 7<sup>th</sup> place.

**17<sup>th</sup> September Men's Doubles Tournament**

The men's doubles took place on Sunday 17th September - players: Andy Gilmour, Steve Hill, Henry Wilkinson, Nigel Allfrey, Dom Lines, Andy Jenkins, Carl Spencer, Ollie Taylor, Eddie Lamdin, Dan Cobden, Mark Maidment, Roy Reynolds. The winners of the men's doubles were Andy Gilmour and Steve Hill with Roy Reynolds and Mark Maidment as the runners up. Congratulations to all the players for making it a great day of exciting tennis.

**24<sup>th</sup> September Men's Singles Tournament**

The men's singles took place on Sunday 24th September - players: Andy Jenkins, Nigel Allfrey, Steve Hill, Carl Spencer, Dom Lines, Dan Cobden, Simon Brown, Andy Gilmour, Henry Wilkinson, Ollie Taylor, Eddie Lamdin. The winner of the men's singles was Dan Cobden with Carl Spencer runner up. Congratulations to Dan and all the players for making it a great day of exciting tennis. And a special thanks to Marjie for providing the most delicious cake and Viv for her yummy cookies.

**Saturday 30<sup>th</sup> September**

Dena Nelson Smith, Chris Marsh and Patsy Allfrey were invited to the National Tennis Centre, Roehampton for the Tennis Volunteer

Community Day. The day was filled with a Q&A session, cardio tennis, padel tennis, doubles tennis, a tour of the amazing facilities and meeting other volunteers and sharing ideas.



**Sunday 1<sup>st</sup> October 2023**

Men's 2s home to Comptons. Result: 1:3 loss to Crablands. Team: Andy Jenkins, Steve Hall, Mark Maidment, Charlie Merrett.



**Saturday 14<sup>th</sup> October.** We held another Pickleball demonstration, thanks to Dena's organisation. We were able to run the event both indoors and out and enjoyed promoting this popular sport.

**Forthcoming Events/Socials**

November 4th 19:00 Quiz Night  
 December 2nd 19:00 Presentation Night

**Crablands BTC Club Socials**

The winter socials started on **September 22<sup>nd</sup>** with a Bingo night and jacket potatoes. Everyone brought their 'dabbers' and it's always a good start to the socials, keep putting your names down for these evenings.

**October 13<sup>th</sup>** saw the second social, a Beetle Drive. For those who do not know what this is you have to draw a beetle after throwing a die, with different parts of the beetle being drawn as you throw the correct number on the die. The prize for the best beetle drawn on the night going to Viv Harris. It's fast and furious with much competition.

Next event **Casino Night** is on November 24<sup>th</sup>, get your names down quick it's one of the most popular events of the winter.

If you are interested in joining our club or finding out more about us, please check our website and get in touch <http://crablandsbtc.co.uk/>

**SELSEY CARPET BOWLS CLUB**

Times for bowling are as follows :-

Sunday 10am -11.30am  
 Wednesday & Thursday evenings 7pm until 8.30pm

We are a very friendly club & welcome new members, all equipment is provided.

Come along & give it a try at Medmerry School, (entrance opposite the Library ) you won't be disappointed.

Contact Annette on 606227 or Marcus on 607347

email: [info@selseycarpetbowls.co.uk](mailto:info@selseycarpetbowls.co.uk)

[www.selseycarpetbowls.co.uk](http://www.selseycarpetbowls.co.uk)

- 35) Who plays Dr Frank N Furter in The Rocky Horror Picture Show?
- 36) What are the rival gangs in West Side Story called?
- 37) High Society is a musical remake of which film?
- 38) Who plays Mrs banks in Mary Poppins?
- 39) Who wrote the music for Sweet Charity?
- 40) The musical Guys and Dolls is based on whose stories?
- 41) In which film is the musical number "Make 'Em Laugh"?

**The Selsey Private Club, Coxes Road**

**PO20 9AN 01243 606015**

**New members welcome.**



1st Wednesday in month Selsey Gramophone Society 2.30pm and Jamming at 7pm all welcome  
 Every Sunday Music Club in the bar 4pm to 7pm Sing along.  
 Folk and Music Club 3rd Wednesday of the month 7pm (fee)  
 Every Monday Darts League  
 Every Tuesday Bingo Bonanza  
 Every Wednesday Julie's Art Club 3pm  
 Every Wednesday Bar Billiards League Evenings  
 Every Thursday Quiz is the Biz; Mid week Roast  
 Every Friday Snooker League  
 Every Sunday the Best Roast On The Coast



Come and join the Selsey Club and enjoy some of the finest beers, wines and spirits in our warm and friendly lounge bar areas, where you can sit and relax, watch TV, play darts or cards or have a frame of snooker or billiards.

You will also find a wonderful function room where there is entertainment most weekends and where Sunday Lunch is served, the Best Roast On The Coast.

There is a weekly Bar Menu with specials on food and drinks. **We will also be doing Christmas dinner parties in December.** For all the above please call to enquire.

The Selsey Private Club Ltd is a family run Club and is the perfect venue for all your parties and celebrations. Please call 01243 606015 for all enquiries..

Old, New and Current members always welcome. Just call in we will show you around..

**Lots going on - check us out on Facebook** (We are also host to the RNA, the Selsey Lions, Selsey Scooter Club, Selsey Molls and Selsey Making Your Mark Ukulele Club)  
**The Selsey Private Club Ltd**

**What's On for November**

Friday 3<sup>rd</sup>. ABBA Night with Amanda Panda



Saturday 4<sup>th</sup>. Flash Company is here for Danny The Birthday Boy.

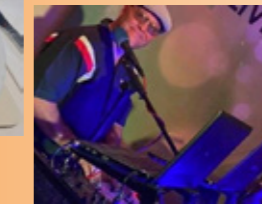


Friday 10<sup>th</sup>. Battle of the Boozers Fundraiser

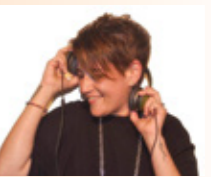


Saturday 11<sup>th</sup>. The B3s Fantastic singers and musicians 9pm

Friday 17<sup>th</sup>. DJ Panda Karaoke Fun



Saturday 18<sup>th</sup>. DJ Tubbs Disco Party



Friday 24<sup>th</sup>. DJ Tubbs Motown, Reggae, Ska, Northern Soul Dance the night away



Saturday 25<sup>th</sup>. To be confirmed - Please contact The Selsey Club for up to date information

Events Advance Notice:  
 Saturday 9<sup>th</sup>. December Cloud 9 Christmas Show with 2 course dinner  
 Saturday 30<sup>th</sup>. New Years Eve Flash Company with DJ Tubbs to see in the New Year

Please book for all the above events

We can also supply food for any occasion 7 days a week with notice

Please follow us on Facebook and Instagram

**THE CAT & RABBIT RESCUE CENTRE**  
 THE CAT & RABBIT RESCUE CENTRE  
 Tel: 01243 967111 Reg. Charity no. 1010000  
 Email: [info@crcc.co.uk](mailto:info@crcc.co.uk) [www.crcc.co.uk](http://www.crcc.co.uk)



Hello everybody! It's me Markus the office cat bringing you all the latest news from The Cat and Rabbit Rescue.

Last month's pet of the month the handsome male cat Twist is still at The Centre but someone is coming to see him soon. I have my paws crossed this will be his forever home.

In my article this month, I wanted to tell you about sweet male cat that

arrived in a very poor condition. Poor Palmer was brought to The Centre in October after he had been living as a stray and had made himself at home in someone's garden. When Palmer arrived, my staff could immediately see how awful his condition was. His skin was sore, scabby and he was nearly completely bald on his back end. He was covered in fleas, so much so that any blanket he laid on was covered in flea dirt within a few hours. I felt so bad for him, he must have been so uncomfortable. My staff said he had some of the worst skin they had ever seen!

He was treated for fleas and worms, and he had a visit to the vet where he started treatment to make him feel better. When he first arrived, he was so scared that he would shake, but he is such a gentle cat, he has just been through a lot. He is now coming out of his shell and he is the sweetest boy who now nudges my staff for some more fuss. Because of the severity of his skin it is going to take quite a while to heal but I am hopeful he will find a forever home once he is better. Thank you to our supporters, as it is only with donations from you that we are able to continue helping animals like Palmer get their second chance at life.

Lovely to chat to you all again, see you next month. The kittens were actually very sweet, but this meant they had to have come from a home. It is never ok to leave any animal in a box somewhere, who knows what could have happened if they had not been found. We will always try to help all the animals that need us, The Centre may often be at full capacity but we will do our best to help as soon as we physically can.

Lovely to chat to you all again, see you next month.

Love Markus x

**P.S. Please check our website [www.crcc.co.uk](http://www.crcc.co.uk) to see how we are now rehoming and for the animals available for adoption.**



**THE CAT & RABBIT RESCUE CENTRE**

Have you visited the new Cat & Rabbit Rescue Centre Charity Shop in the High Street?

It is full of fantastic bric-a-brac, including antiques, pictures, jewellery, as well as clothes for every occasion, beautiful bedding, curtains, craft items, and good quality furniture.

If you have time to spare, why not become a volunteer, just visit Samantha in the shop.

**Macaroni Cheese**

This month we would love to introduce you to a lovely little male rabbit called Macaroni Cheese. Macaroni Cheese is 2 years old and has been with us at The Centre since July after his owner was moving to a flat and could not take him. He is a lovely little boy who enjoys strokes and company. He can occasionally be a little sassy if he is in a funny mood but really he does love people. Macaroni Cheese is looking to find a new home where there is a female rabbit he can bond with. He is generally a very sweet boy so he could live with older children.



If you think you may be able to offer Macaroni Cheese a loving home please give the centre a call on 01243 967111 or visit our website [www.crcc.co.uk](http://www.crcc.co.uk).



**THE CAT & RABBIT RESCUE CENTRE**  
 Holborow Lodge, Chalder Lane, Sidlesham,  
 W. Sussex PO20 7RJ  
 Tel: 01243 967111 Reg. Charity no. 1010000  
 Email: [info@crcc.co.uk](mailto:info@crcc.co.uk) [www.crcc.co.uk](http://www.crcc.co.uk)

Also find us on facebook  
[www.facebook.com/catandrabbitrescuecentre](http://www.facebook.com/catandrabbitrescuecentre)

**SELSEY YOUTH CLUB**

Age 9-12

Every Thursday 4:30pm-5:30pm

£1.50 entry fee

Selsey Football and Social Club (next to C0-0P) High Street Selsey, PO20 0QG

01243 608943

**Brent Lodge Wildlife Hospital**  
 Winter Wildlife Briefings

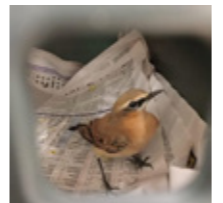
November 2023  
**INSIDE THE WILDLIFE HOSPITAL IN NOVEMBER**

As Winter is well and truly settling in, we are becoming increasingly busy here at Brent Lodge. Winter is a particularly busy time for hedgehog admissions each year, with lots who are suffering from malnutrition, ringworm and exhaustion from failing to successfully hibernate due to habitat loss and climate change.



As Bonfire Night is soon approaching, we urge you to PLEASE CHECK YOUR BONFIRES BEFORE YOU LIGHT THEM. Bonfires are the perfect wooden palaces for a little hedgehog family to settle in and, to avoid any unnecessary harm or distress to them, please take a couple of minutes to check inside your bonfires with a torch before lighting them, or simply only build them just before lighting. We sadly get an awful lot of hedgehog and other small mammal admissions at this time of year who have suffered nasty burns and smoke inhalation. You could save little lives if you do this one small check. Thank you!

**PATIENT STORIES**



This beautiful female wheatear was brought to us recently with a damaged wing. Wheatears are small, delicate birds who typically hop around on the ground. They are spring and summer visitors to the UK for their mating season and typically fly back to Africa for the cold winter months, but sadly due to the condition of this female's wing, she will be unable to make this journey this year and will remain in our care until she is well enough to do so. After her 2-week isolation and triage period, she was moved to one of our lovely outdoor aviaries where she will continue to receive the care she needs for her recovery.

**HELPING BRENT LODGE WILDLIFE HOSPITAL**

With up to 400 hedgehogs in our care at any one time over winter, we are getting through hundreds of tins of dog/cat food a day. Any donations of these (poultry-flavoured best) would be so greatly appreciated by our animals and team. You can drop them off at the hospital or one of our charity shops, but please call ahead first to say you are coming. Please also see our website for our Amazon Wishlist of more items we are in desperate need of at Brent Lodge. Thank you!



**AVIAN FLU:** Please call us on 01243 641672 (option 1) BEFORE picking up any birds so we can ask vital questions about the bird before taking action. We are still restricted regarding high-risk water birds but still please give us a call if you come across ANY sick/injured bird.

Please always feel free to call us if you need any advice/assistance with wildlife enquiries or how to support us.

By Alex Foster, Education Outreach Coordinator

For more information and tips, please visit our website or contact us on the details below.

Web: [www.brentlodge.org](http://www.brentlodge.org)  
 Tel: 01243 641672  
 Email: [enquiries@brentlodge.org](mailto:enquiries@brentlodge.org)  
 Address: Brent Lodge Wildlife Hospital, Cow Lane, Sidlesham, PO20 7LN.

Is your piano no longer singing in tune with you?

Serving the Selsey Community  
 Lyn Tarver  
 Certified piano tuner with over 20 years experience  
 Text requests/inquiries to 07398410502



**PLEASE NOTE LAST DATE FOR SUBMISSIONS FOR ENTRY INTO NEXT SELSEY LIFE IS 16TH NOVEMBER**

Are you interested in meeting new friends, having a good chat and sharing your love of books and reading in the heart of your local...

**READING FRIENDS**

**1st Friday of the month 10.30-11.30am.**  
**Selsey Library**  
 Everyone welcome.

Logos for National Lottery Funded, West Sussex Library Service, Arts Council England, and The Reading Agency.

**FILL-IN, or CRISS-CROSS, else KRISS-KROSS, CROSSWORD PUZZLE**  
Fill in the blanks with the words provided.

4 letter words  
HERB  
LIDS

5 letter words  
CHEEK  
CYDER  
JEWEL  
KNOCK  
MONEY  
PILOT  
SHEEP  
SLICE  
STRAW  
ZEBRA

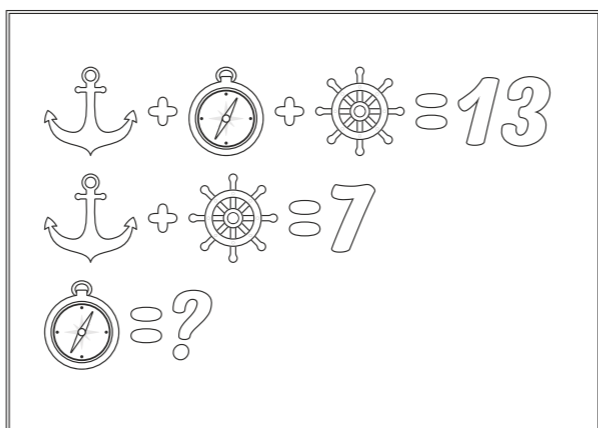
6 letter words  
BARBER  
ETHNIC  
FRIJOL  
LIQUID

7 letter words  
FREEZER  
HEROISM  
PRESENT  
STRAUSS

9 letter words  
CORAL REEF  
FIFTIETHS  
REFERENCE  
SOMETHING

10 letter words  
ALTOGETHER  
JOURNALIST  
LOCOMOTIVE  
RAIN SHADOW

15 letter words  
CHOCOLATE MOUSSE  
LILY OF THE VALLEY

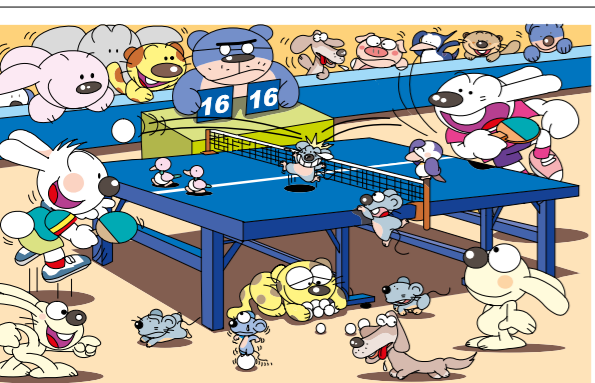


Z		E			
	D		A		F
A			D	G	
E	Z				C B
H	Z		B		
C			D		H
E		A			
	H		C	F G Z	
Z			H		

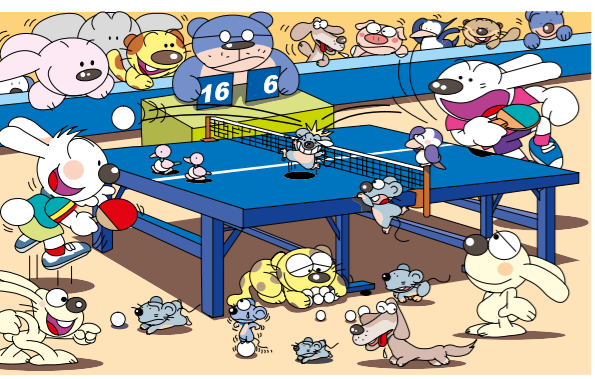


- Across:**
- Stage lamp.
  - Starting point in reasoning.
  - Make a tie less tight.
  - Concept.
  - Item on a belt.
  - UFO pilots.
  - Wet period in the tropics.
  - Bog fruit.
- Down:**
- Piece of office gear.
  - Small spade.
  - You look through it.
  - Salon stylist.
  - Fruit pastry.
  - By the way.
  - Lining fabric.
  - Spiritual song.

WORD LIST	PUZZLE #4
<input type="checkbox"/> ANTIQUARIES	N M F M H C O S P O N S O R E D
<input type="checkbox"/> CATHARTICS	T M K O I M M A N E N T C U G G
<input type="checkbox"/> COSPONSORED	V F I V L R I O I D T R A Z L L
<input type="checkbox"/> DETACHING	H X H S L Y H E J W L H T J C Q
<input type="checkbox"/> DIAGNOSES	O K L U T E O D E T A C H I N G
<input type="checkbox"/> DISTAFF	Z W K C O R E C T A L X A Y S W
<input type="checkbox"/> ENCUMBERING	W A L D P A N T I Q U A R I E S
<input type="checkbox"/> HILLTOPS	Y X M I S L C V V M U A T D Q H
<input type="checkbox"/> IMMANENT	M P E S S O U C V W Y C I I U O
<input type="checkbox"/> INTENDS	M I R T W H M C N I G X C A O P
<input type="checkbox"/> MERCHANTS	Y R C A Z N B E K S L L S G I L
<input type="checkbox"/> OWLISH	A E H F B Z E I T I P W B N A I
<input type="checkbox"/> PLUCKINESS	G F A F L B R A P I N A U O S F
<input type="checkbox"/> RABBIS	O B N S H E I K E V M E R S J T
<input type="checkbox"/> RECTAL	Y I T Q X Y N S U A L E S E N E
<input type="checkbox"/> SEQUOIAS	Q C S A G W G I N T E N D S D R
<input type="checkbox"/> SHEIK	
<input type="checkbox"/> SHOPLIFTER	
<input type="checkbox"/> SOMETIME	
<input type="checkbox"/> SPARED	



Spot 8 differences



Crack the Code

A	B	C	D	E	F	G	H	I	J	K	L	M	N	O	P	Q	R	S	T	U	V	W	X	Y	Z
1	2	3	4	5	6	7	8	9	10	11	12	13													
14	15	16	17	18	19	20	21	22	23	24	25	26													

- Who was originally cast as the male lead in Easter Parade?
- Who plays Roxie Hart's husband in the film Chicago?
- In which musical is Billy Bigelow a character?
- Who played Colonel Pickering in the film My Fair Lady?

### Selsey Camera Club

A friendly and informal club for all photographers. Whether you have a DSLR or a camera phone, we will be very happy to see you. Please visit our website [www.selseycameraclub.co.uk](http://www.selseycameraclub.co.uk) for more information on our programme and how to join.

### Visually Impaired Club

Meets on 2nd and 4th Tuesdays of each month  
2-4 PM  
Hanover Close  
Details from Judy on [01243 606995](tel:01243 606995)

Alcoholics Anonymous Meetings In Selsey  
The Methodist Church High Street

Fridays at 1:30 pm  
Sundays at 6:30 pm

### Selsey Model Boat Club

The Club meets twice a week at the pond on East Beach, weather permitting, when members sail their radio controlled boats  
Times: 10.00am until noon on Sundays and Wednesdays  
The first Sunday of each month is Race Day  
New members welcome  
or just pop along to have a look and a chat contact Richard on [07798786076](tel:07798786076)

### Selsey Bridge Club

All welcome  
Friendly group of mixed ability  
Thursday afternoons  
2pm - 5pm  
Selsey Centre Manor Road  
call Graham or Christine [01243 602612](tel:01243 602612) for information

### THE WRITERS CIRCLE

meets on the first Tuesday of every month in The Methodist Hall, High Street, from 2.00pm until 4.30pm  
If you are already writing or a complete beginner you will be given a warm welcome by our small, friendly group of ladies and a few gentlemen  
Membership is £12 per year and £2.00 per session.  
Tea or Coffee included.  
For more information contact Pat Read Tel: [07946707708](tel:07946707708)

### SELSEY MAH JONG GROUP

ALL WELCOME  
FRIENDLY GROUP ON TUESDAY AFTERNOONS  
2 PM TILL 5 PM AT THE SELSEY CENTRE  
PHONE SUE ON [07710 658 331](tel:07710 658 331)

### SELSEY CANASTA GROUP

ALL WELCOME  
ALSO SCRABBLE  
FRIENDLY GROUP ON WEDNESDAY AFTERNOONS  
2 PM TILL 5PM AT THE SELSEY CENTRE  
PHONE PAMELA ON [01243 604720](tel:01243 604720)

### Methodist Church Christmas Table Top Sale

The Methodist Church Christmas Table Top sale is on Saturday November 18th, starting at 9am.  
Put the date in your diary so you do not miss out on all the goodies - and it is free entry.  
0900 till 1pm Selsey Methodist Church

### Selsey Men in Sheds

A non-profit making organisation  
Open Tuesday & Thursday 10 - 4  
Saturdays 10 - 2  
Membership £10.00 per month or £100 per year  
Complete your own wood / metal projects or be involved in group activities  
If you are interested in joining contact Mick Webb [07939 880029](tel:07939 880029)  
email [m.c.webb46@gmail.com](mailto:m.c.webb46@gmail.com)

### SELSEY CANCER RELIEF FUND DATES TO REMEMBER

Methodist Church Hall 10am  
Saturday November 4th Jumble Sale 9.30am  
Saturday December 2nd Christmas Sale 9.30am  
There is ample parking behind the Fire Station.

### 1st SELSEY SCOUTS Charity Shop

Scout HQ, School Lane ~ every Saturday between 10 am -12 noon  
Bric-a-brac ~ Clothes ~ Et al

Further events/classes can be found in the Selsey Community Forum newsletter, copies available in the Care Shop and other places, and you can also visit the Community Forum website:  
<http://www.selseycommunityforum.uk/News/>



# Beacon Church Selsey

## Regular Weekly Church Events

Below are our regular activities and services together with the specials below for the month.

Sunday	10.00am		MORNING WORSHIP
Tuesday	1.00pm - 5.00pm		From 14th November - Warm Spaces Pantry Plus 'Community Food Hub'
	2.00pm - 3.00pm		
Wednesday	2.00pm - 3.30pm		Tea and Chat at the church building
Wednesday	7.00pm		Alpha at the church building
Friday	10.00am		Sunbeams for pre-school children and carers Term-time only
Friday	5.00pm		Bright Sparks for school Yrs R to 4 Term-time only
Friday	6.15pm		Lighthouse for school Yrs 5+ Term-time only

Beacon Church Selsey, are a group of ordinary people who believe that church is a great place to make friends and experience God together. We are a family who believe that church should not only be a great time, but also a place where lives are radically transformed. We value being a part of the Selsey Community and of the many community activities and support groups. Rest assured, you can always be sure of a warm welcome, friendly faces, Bible teaching, and even a cup of tea. If you have not been here before, why not give us a try - we would love to meet you.

## Christmas Community Carols



Organised by all four of the Selsey Churches working together, this will be held on Thursday 7<sup>th</sup> December at the Academy School 7pm-8pm. It is free entry and will include the Seal School Choir, readings and Community Singing.

## November Diary

Sat 4<sup>th</sup> 9am **Men's Breakfast** The Boulevard



Sun 5<sup>th</sup> 5pm **New Songs**

Lest we forget...



Sun 12<sup>th</sup> 10am **Remembrance Sunday**

Mon 13<sup>th</sup> 2pm **Inspire Group** - Open to all adults - **Tile Decoupage** and a Christian "thought for the day"



Sun 19<sup>th</sup> 3pm **ResBite Tea**

Mon 27<sup>th</sup> 2pm **Inspire Group** - Open to all adults - **'Christmas Baubles'** craft and a Christian "thought for the day"



## December Diary

Sat 2<sup>nd</sup> 9am **Men's Breakfast** The Boulevard



Sun 3<sup>rd</sup> 3pm **ResBite Tea and Christmas Songs of Praise**



Thurs 7<sup>th</sup> 7pm **Christmas Community Carols** - organised by all four of the Selsey Churches working together this will be held the **Academy School**. Entry is free and will include the Seal School Choir and Community Singing.

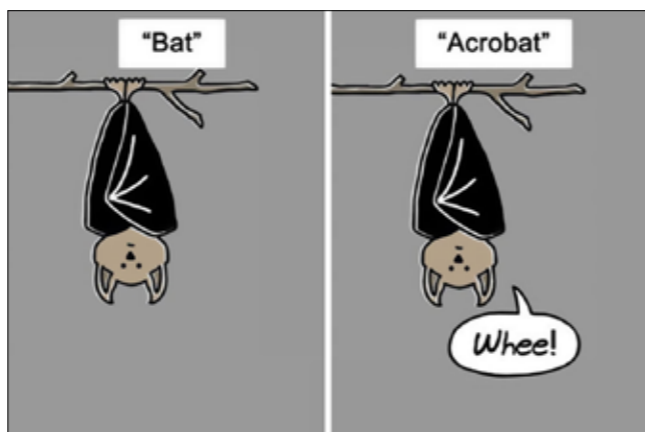


Sun 10<sup>th</sup> 10am Morning Worship followed by **Christmas Buffet Lunch**. Free entry & open to all.

More details of all our services and activities can be found on our website



Marisfield Place, Selsey, West Sussex PO20 0PD  
**T: 01243 607741**  
**E: office@beaconchurchselsey.org.uk**  
**W: beaconchurchselsey.org.uk**



## Selsey Methodist Church

Assuming I've got my dates right, you should be reading this around - or at least not too long after - 1<sup>st</sup> November. In the Church calendar this is labelled as 'All Saints' Day' and it always makes me think not so much of the people that have been given the title 'Saint Whomever' but the many, many more people who, through history and day by day in our modern world, live as saints in the work they do and the people they are.



And it's not just me - you often hear people describing others as a saint, maybe because their behaviour, demeanour or actions seem better than ours. I believe there are lots of saints here in Selsey. I see them helping others, encouraging others, etcetera and so on. And I also believe there's saintliness in each and every one of us. We all have the capability and opportunity to help and to encourage others, whether by our words, our actions or our more tacit support.

So, saints of Selsey, in the words of John Welsey (hoping you can get past the slightly old-fashioned language) please can I encourage you to continue to:

*Do all the good you can; in all the ways you can; to all the souls you can; in every place you can; at all the times you can; with all the zeal you can; as long as ever you can.*

When we all live for the good of each other, we all benefit and all our lives are better for it. It's sometimes not easy but let's give it a go!

With all good wishes  
 Tim ☺  
 Tim Cooper  
 Local Lay Pastor, Selsey Methodist Church



## SELSEY METHODIST CHURCH SERVICES

Sunday 5<sup>th</sup> November 10.30 am Mr Tim Cooper  
 Sunday 12<sup>th</sup> November 10.30 am Dr Mike Nicholls  
 Sunday 19<sup>th</sup> November 10.30 am Revd Tony Brazier  
*Holy Communion*  
 Sunday 26<sup>th</sup> November 10.30 am Mr Tim Cooper  
*Tea for those living alone*  
 Our Lay Pastor is Tim Cooper 07920567764

## SELSEY METHODIST CHURCH

For enquiries about hiring the hall please email [d.dixon808@btinternet.com](mailto:d.dixon808@btinternet.com)



## Catholic Church of Our Lady of Mount Carmel & St Wilfrid



Masses held on Wednesdays at 10am and Sundays at 11am

12 Church Road, Selsey, PO20 0LS  
 (Plenty of parking available)



For more details go to:  
[www.saintsofsussex.com](http://www.saintsofsussex.com)  
 Sign up for weekly newsletter:  
[www.saintsofsussex.com/newsletter](http://www.saintsofsussex.com/newsletter)

Part of the Parish of Our Lady and the Saints of Sussex (with the churches of the Witterings, Chichester and Bosham)



## ST PETER'S CHURCH

Weekly Services held at the Parish Church of St. Peter's, Selsey  
 Rector: Fr Andy Wilkes  
 Tel: 01243 601984 Email: [rector.selsey@gmail.com](mailto:rector.selsey@gmail.com)

The church is open daily for prayer and visits.

Tuesday 9.30 am Holy Communion  
 Wednesday 9.30 am Holy Communion  
 Thursday 7.00 pm Holy Communion  
 Sunday 8.00 am Holy Communion (Book of Common Prayer)  
 Sunday 10.00 am Parish Sung Eucharist

Please check our noticeboard and website for service times

All are welcome to attend, we look forward to seeing you.

Our Church Halls with Kitchen and Car Park are available to hire for your meetings and celebrations please contact our Hall Manager Sue Ripley on 01243 948501 or [stpetershallbookings@outlook.com](mailto:stpetershallbookings@outlook.com)

Two below  
by Alan Ede

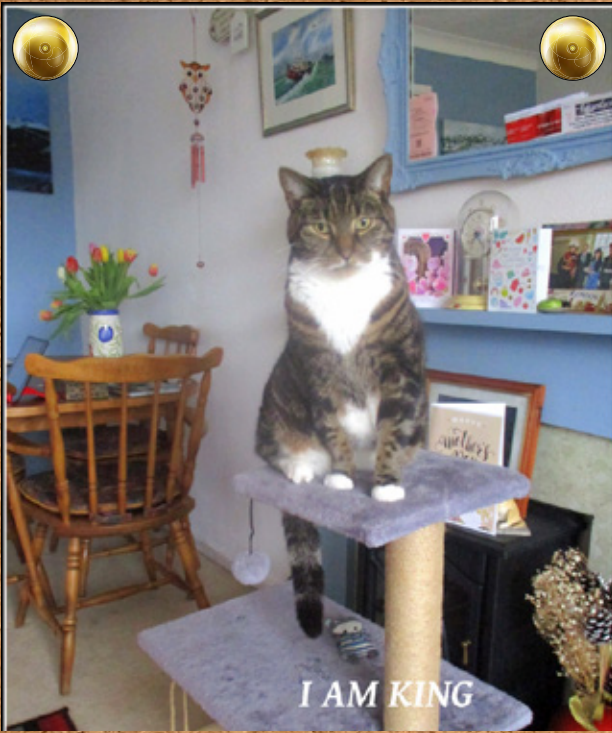
# Readers' Gallery

Would you like to see your photo on here? Or how about your drawing or painting? Email it to

[selseylife@btinternet.com](mailto:selseylife@btinternet.com)

and you could be on the next back cover.

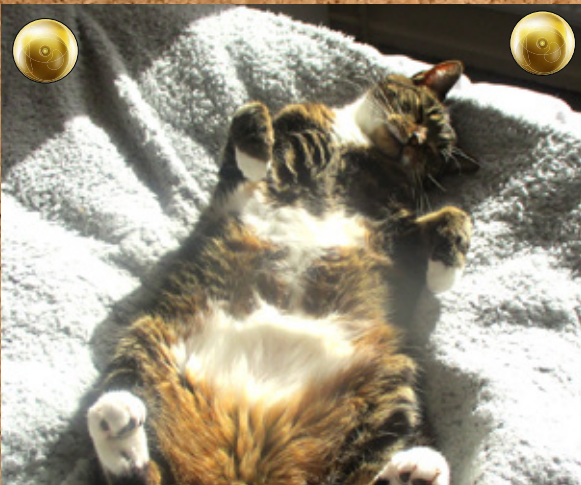
(Put Readers' Gallery in the title)



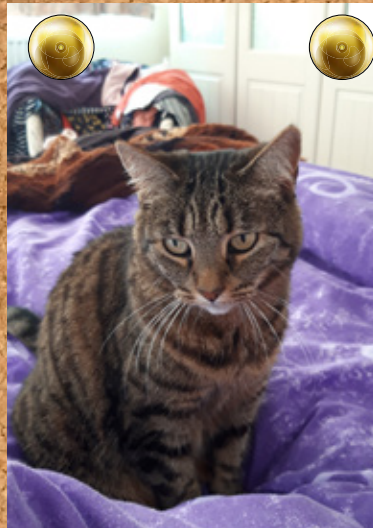
East Beach by  
Dennis Wheeler



Feeding Time by  
Elaine Cudlipp



Beverly our baby seagull  
by Amanda Ward



My cat Cic has pinched my  
bed by Rosemary Farrell



Spitfire  
Painted by  
Julie Kelly



Panorama by  
Annette Hoskins

